

# THE CULVER CITIZEN

ON LAKE MAXINKUCKEE • INDIANA'S MOST BEAUTIFUL LAKE

71ST YEAR, NO. 31

CULVER, INDIANA, THURSDAY, AUGUST 5, 1965

TEN CENTS

## Town Board Studies Request Of Farm Bureau

A request for permission to install corn dryer equipment at the Farm Bureau Co-op elevator was among several items of business discussed at the regular Monday night meeting of the Town Board.

Vern Weiger, manager of the local branch, said the gas-fired heaters would be driven by 2 large blowers, and will be used heavily for about 30 days each year during the height of the soybean and corn harvest season. He said the installation would represent an investment of about \$14,000 for the Co-op.

Town Board President Ted Ervin noted that regulation of such devices would fall within the jurisdiction of the town's anti-noise ordinances, and said town board members would inspect similar installations in Knox and other neighboring towns, and would advise Weiger of their decision within two weeks.

Elbert Graham, of Lake Street, asked the board's view of his plan to build a retaining wall along one side of his property to stop the erosion of his yard through runoff into the adjoining alley. The board requested that Graham defer his work until an official survey is made to determine the location of property lines and the alley in that block.

Water superintendent Verl McClellan reported that a new engineering drawing which places the location of the town's water-distribution system, including mains and fire hydrants, has been completed, and the board ordered six copies of the map for official use. One of the maps will be forwarded to the Indiana Rating Bureau, Indianapolis, which recommended its preparation.

The board was advised that the new Ford fire truck chassis has been delivered to John Beam Fire Apparatus Division of FMC Corp., Lansing, Mich., for the installation of the 750-gallon-per-minute water pumper and related equipment.

On the humorous side, the board learned it may be faced with the problem of where to house the new \$20,000 fire fighting unit. It was pointed out that the truck, with its roof-mounted red light and loudspeakers, and side-mounted equipment, will be too tall and too wide to go through the existing doors at the Fire Station.

The board deferred action on a petition for membership received from the Maxinkuckee Fish and Game Club.

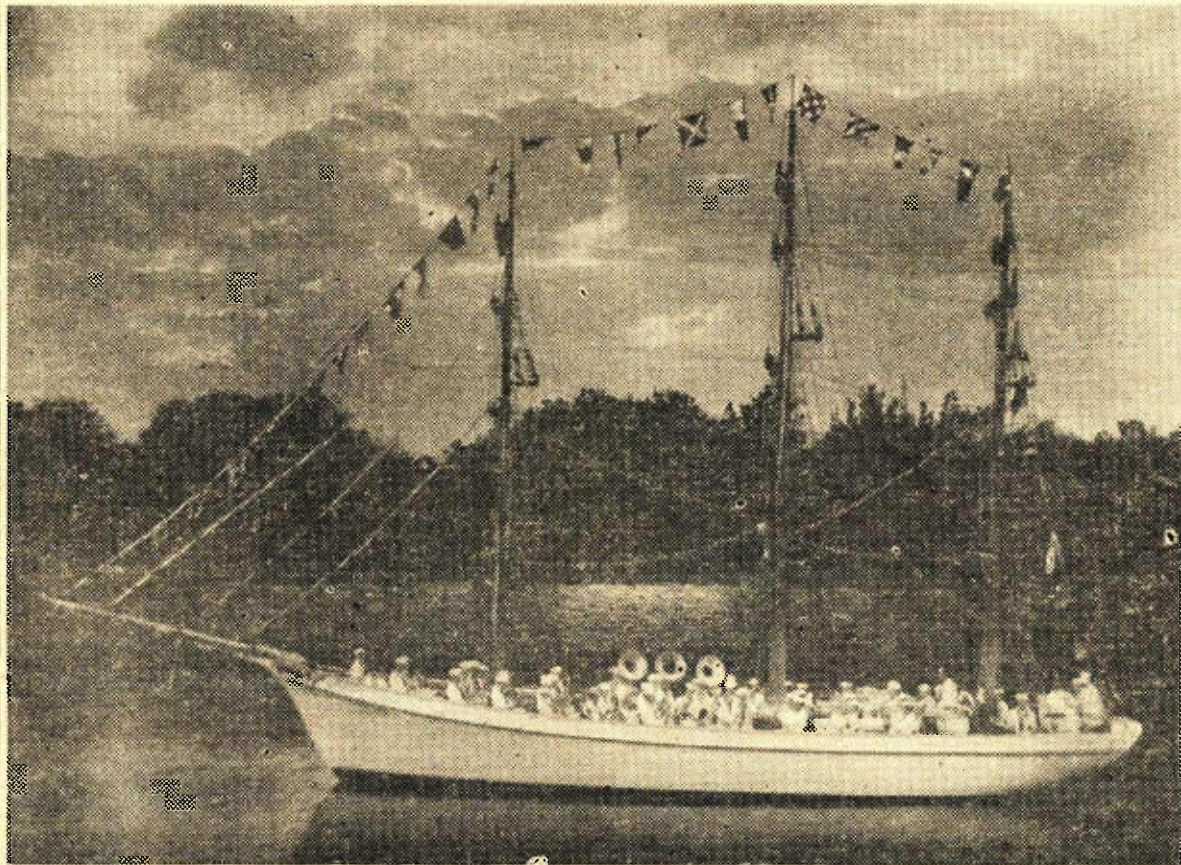
## Hospital Notes

Mrs. Fannie Biddle, proprietor of the Curlette Beauty Salon at 18 South Main Street in Culver, Ill. Saturday morning in her home the same address and suffered a broken hip. She was taken to St. Joseph Memorial Hospital at Kokomo. She would enjoy hearing from her Culver friends.

Tuesday evening Mrs. Thomas Nulty was taken from the office of a Culver physician by the ambulance of Plymouth to Parkview Memorial Hospital in Plymouth where she is under observation. Her room number is 218.

A new crop of TRI KAPPA PEPPERS on sale at The Citizen's meat counter. Please help the charity raise money for charitable purposes. Only \$1.50, plus tax, a pound for shelled broken meats. 43tfnc

## Famed Moonlight Serenade By Summer School Band Scheduled For Saturday and Sunday, August 7-8



The Culver Summer Schools band will play its 23rd annual Moonlight Serenade when it cruises Lake Maxinkuckee Saturday and Sunday nights, Aug. 7-8.

The Moonlight Serenade is annually one of the high points of the summer season for Lake Maxinkuckee residents and the town of Culver.

A 55-man segment of the Culver Summer Schools' band will board the three-masted sailing vessel O. W. Fowler each night at

approximately 8:30 p.m. The band will play briefly each night at the Culver Inn pier, then proceed for a series of stops along each side of the Lake.

Col. Edward T. Payson, band director, said the Fowler will stop at the Culver town beach about 9 p.m. Saturday night for a half hour's concert before sailing up the west shore of the Lake. Sunday night, the Fowler will sail the east shore. On each occasion, the band will play a concert of

old-time songs.

In keeping with the idea of the Moonlight Serenade, lake residents each year decorate their homes with colorful Japanese lanterns. The Fowler is usually accompanied on its cruise by a large number of privately-owned boats. Col. Payson asks that boat owners make a special effort to stop their engines and keep a safe distance from the Fowler when it makes its series of stops to serenade residents of the Lake area.

## MRS. GLENN COOLMAN'S SISTER KILLED SATURDAY IN TRAGIC AUTO ACCIDENT

Mr. and Mrs. C. Glenn Coolman, Academy Road, returned to Culver early Tuesday evening from Montpelier, Ind., where they were called Saturday afternoon following the tragic automobile accident in which Mrs. Coolman's only sister, Mrs. Lee (Ruth) Gerard, lost her life.

Mrs. Gerard, age 68, Mrs. Ora Closser, 61, and Mrs. Marjorie Miller, 42, all of near Montpelier, died about 1:30 p.m. Saturday, July 31, when the car in which they were riding was struck from behind by a truck while they were slowing down to make a left turn off Indiana Highway 18, on the east edge of Montpelier.

Services for Mrs. Gerard were held at 10:30 o'clock Tuesday morning, Aug. 3, at the Methodist Church in Montpelier.

Surviving with Mrs. Coolman are the husband, Lee; two daughters; two sons; and 13 grandchildren.

## Carl Loser Takes New Job In Illinois

Carl E. Loser, South Bend, has been named manager of the Credit Bureau of Rockford, Ill. He plans to move his wife and four children to Rockford before the beginning of the new school term.

Previously a Warsaw resident, he has been with the Credit Bureau of South Bend 6½ years, most recently as director of sales and public relations. He is a graduate of Warsaw High School and attended the North Central Management Institute of Indiana University.

He is the son of Mr. and Mrs. Clifford Loser of Warsaw, former Culver residents.

## Plans Completed For Kewanna Harvest Festival

Plans have been completed for the Sixth Annual Kewanna Harvest Festival to be held in Kewanna on Aug. 26, 27, and 28. The festival is sponsored by the Kewanna Progressive Association and in case of rain will be held in the Kewanna Gymnasium.

The festival features a huge midway with the Jessop's Candy-town shows and Worthington rides, chance games, navy and air force displays, merchants and industrial tents, art and hobby show, eating stands, clowns, bands, and free acts.

The festival opens Thursday night, Aug. 26, with the crowning of the Festival Queen, followed by a Style Show sponsored by the Beeline Fashions.

Friday afternoon is Kiddies Day with a parade at 2:30 p.m. with special kiddie contests and judging of pets.

Friday night there will be a teen dance, featuring the "Swinging Stingrays", from 8 to 11 p.m. Also Friday night there will be an auction of all new merchandise on the stage.

Saturday, Aug. 28, the mammoth parade will begin at 2 p.m. featuring the Great Lakes Naval Training Center Band, Bunker Hill Air Force Drum and Bugle Corps, Michigan City State Prison Band, Winamac Antique Car Club, High School Bands, area queens, baton corps, marching units, floats, horse patrols, and special celebrities including former Governor Henry Schricker.

Saturday night at 8 p.m. Capt. Stubby and the Buccaneers will be featured in a free variety show on the stage.

Friday's free acts will feature

## Blood Bank Needs YOUR Donation Aug. 13

The American Red Cross Regional Blood Bank will be in Culver on Friday, Aug. 13, to accept donations for this urgently needed commodity from local residents.

Since more blood has been used from this supply than has been collected from these donations, the need is greater than ever for Culverites to donate blood. Since a quota of 130 pints of blood has been set for this visit of the Blood Bank in order to maintain the program and make blood available to those in need, it is necessary for this quota to be fulfilled as near as possible. Should Culver lose its affiliation with the Blood Bank program, it would become increasingly difficult for many people to obtain blood when needed.

The Blood Bank will locate at the Culver High School Gymnasium Friday from 12 noon to 6 p.m. Anyone in good health from the ages of 18 through 59 is urged to remember this very important date and give blood. Donors in the age group of 18-21 must have the written consent of one parent.

Mrs. Loyd Hollifield and James McAllister are joint chairman of this program.

## PLASTIC HOME

The next house you buy might be a plastic one — at least on the outside. Modern Plastics, McGraw-Hill publication reports that plastic is now being used for home sidings, gutters and rainspouts. The plastic used has proved to have good impact strength and to be heat and weather resistant.

Friday's free show will include the

## \$3.02 School Tax Levy For 1966 Is Up 56 Cents

At its meeting on Monday evening, the Board of School Trustees of the Culver Community Schools were informed that the completed budget of the corporation for 1966 will provide for a total levy of \$3.02. The individual levies will be 72 cents for Special School Fund, \$1.66 for the Tuition Fund, and 64 cents for the newly approved Cumulative Building Fund.

Superintendent McLane explained that the total levy of \$3.02 is 56 cents higher than that payable in 1965. He pointed out that this is considerably less than the levy of 80 cents which has been approved for the new Cumulative Building Fund. The total levy for the operational costs covered by the Tuition and Special School funds will be \$2.38 as contrasted with a total for these two of \$2.46 for 1965. The Tuition levy for 1966 will be \$1.66 as compared with the 1965 levy of \$1.86. The Special School levy for 1966 will increase from 60 cents to 72 cents.

It was emphasized by Mr. McLane that a net decrease of eight cents for the levies covering operational funds has been possible in spite of the loss of approximately \$25,000 of State Property Tax Relief money as a credit to the Special School Fund. By the 1965 state distribution law, this amount of state aid which has been available for Special School costs in 1965 must be credited to the Cumulative Building Fund in 1966. Even with this loss of state revenue for that fund, the Special School levy increases only twelve cents, while the credit of this state money to the Cumulative Building Fund will decrease that established levy of 80 cents to a levy of 64 cents.

In other business on Monday evening, the School Board discussed with Mr. James Rennard, the architect from M-W Incorporated, the proposed written contract for the services of that company in planning the new high school building. Attorney George Stevens read the provisions of the ten-page contract, after which various phases of the contract were reviewed. The School Board decided to study the contract forms before taking final action on the contract.

Architect Rennard explained that approval of the preliminary plans is expected to be received within the next week from the State Schoolhouse Planning Division. In order that work then can be started on the preparation of the final plans and specifications, it would be necessary for final decisions to be made by the School Board on the question of including or eliminating the swimming pool and on the matter of including a total energy system for the generation of electric power and heating of the new building by use of gas-fired diesels.

Because these decisions will affect the final plans very significantly, the School Board agreed to meet next Monday evening and take action on the swimming pool and total energy system. The comprehensive plans then will be developed on the basis of these decisions by the School Board.

## BOYS IN CULVER HIGH SCHOOL SPORTS MUST REGISTER

Boys who will register in Culver High School and plan to participate in sports for the coming school year of 1965-66, are to report to the high school gymnasium

# THE CULVER CITIZEN

ON LAKE MAXINKUCKEE • INDIANA'S MOST BEAUTIFUL LAKE

Established July 13, 1894

Devoted to the Interests of Nearly 20 Communities  
in Marshall, Starke, Fulton, and Pulaski Counties

Having an Estimated Population of 12,000

Published Every Wednesday by The Culver Press, Inc.

Plymouth, Washington, and Lake Streets, Culver, Indiana, 46511

Entered as Second Class Matter at the Post Office at Culver, Indiana,  
Under the Act of March 3, 1879

## SUBSCRIPTION RATES

	Indiana	Out-of-State	Indiana	Out-of-State
1 Year	\$4.00	\$4.50	6 Months	\$2.25
2 Years	\$6.50	\$7.00	3 Months	\$1.25

JOHN A. CLEVELAND, Business Manager

ROBERT D. HANSEN, Editor

MARJORIE FERRIER, Assistant Editor

MARGARET McDONALD, Assistant Editor

DALE DAVIS, Printing Superintendent

## Kenneth Lackey, Ex-County Resident, Will Retire As U. S. Court Clerk



KENNETH LACKEY

Kenneth Lackey, Clerk of the U.S. District Court for the Northern Indiana District, which includes the Fort Wayne division, has announced his retirement effective Aug. 6.

Lackey, who lives with his wife, the former Doris Tomlinson of Francesville, at 8333 Lake Shore Drive, Gary, was appointed U.S. District Court Clerk in January of 1951 by Judge Luther M. Swygert, now a member of the U.S. Court of Appeals in Chicago.

For the past three years, Lackey has served under Chief Judge Robert A. Grant of the South Bend Division, Judge George N. Beamer of Hammond and Judge Jesse E. Eschbach of Fort Wayne.

Born Dec. 14, 1901, in New Carlisle, Lackey graduated from Plymouth High School, attended the School of Architecture at the University of Illinois for two years and is a member of Alpha Rho Chi Fraternity.

He appeared on the professional stage for seven years in the 1920s, four years with Ted Healy in vaudeville as one of the original Three Stooges and three years in the New York cast of "Earl Carroll's Vanities."

His wife, Doris, whom he married in 1930, has a B.S. Degree from Butler University and an M.A. from Northwestern University. She is a former principal of Franklin Elementary School, Gary, and was appointed to the Indiana State Board of Education by former Gov. Henry F. Schricker. She is vice-president and member of the board of the Gary League of Women Voters. Her hobbies are music, reading and gardening.

Lackey served the Democratic Party in Lake County over a period of 12 years as City, County and District Chairman. During the term of former Gov. Henry F. Schricker, he was a member of the Indiana State Central Committee.

From 1942 to 1951, Lackey was Superintendent of Parks for the city of Gary under Mayors Joseph E. Finerty and Eugene Schwartz. He is a past president of the Indiana Park and Recreation Association and the Mid-West Park Executives Association, and was also a senior fellow of the American Institute of Park Executives.

Lackey is a member of the Mason Lodge, Plymouth and The South Bend Consistory and Orak Shrine, Hammond. For the past 30 years, he has been an active member of the Gary Optimist Club.

He is Past Regional Director of the Sports Car Club of America and former director of the Gary

TRY NEW  
**REMINGTON**  
**"Hi-Speed"**  
22's with  
**"golden"**  
**Bullets**  
for best results  
in all types of  
shooting



- Exclusive bullet plating provides "golden" color and gives you a cleaner, harder bullet finish that will function better in all 22's.
- Redesigned hollow point bullet provides more uniform mushrooming.
- Protection from heat and cold.
- Won't collect lint or grit.
- PLUS the flat trajectory smashing power and exclusive "Kleanbore" priming features of famous Remington "Hi-Speed" sporting ammunition.

**Remington** **DUPONT**

"Kleanbore" is Reg. U. S. Pat. Off.  
"Hi-Speed" is a trademark of Remington  
Arms Company, Inc., Bridgeport 2, Conn.

"As Advertised in the  
Farm & Home Section"

**CULVER  
HARDWARE**

Culver

Chamber of Commerce, and operated a nursery and landscape firm in the northwest area of the state.

A member of the Christ Church, Episcopal of Gary, he served on the vestry for the past two years.

His hobbies are gardening, little theater and fishing.

After Aug. 6, when he retires, Lackey and his wife will move to their new home, "Melody Falls," in the Blue Ridge Mountains near Columbus, N.C.

Mr. Lackey is the son of the late Mr. and Mrs. Harry Lackey, the elder Mr. Lackey being a well known realtor in the Plymouth and Culver areas. Mrs. John T. Murphy of Plymouth and Mrs. Herschell R. Coil of Syracuse are sisters; and Mrs. Chester W. Cleveland of Culver is a first cousin.

## Completes Course In Life Insurance Underwriting



TED L. STRANG

Ted L. Strang, 215 Winfield St., local representative for Mutual of Omaha and United of Omaha, was awarded a certificate of proficiency for successful completion of an intensive course in life insurance underwriting. Mr. Strang is associated with the James Ayrett Agency in South Bend.

Mr. Strang, who now writes a complete line of personal protection, attended the special school held recently at the Home Office in Omaha, Nebr.

Ken Chase and Jim Bingham conducted the school. One of the highlights of the week's course was instruction and discussion of United's "Straight Line to Security" service. The instruction enables a field representative to determine a family's insurance dollar needs in advance and professionally plan an insurance program.

## NAVAL SCHOOL BAND TO PRESENT CONCERT IN TOWN PARK AUGUST 12

The full 80-piece Culver Summer Naval School Concert Band, under the direction of Col. Edward T. Payson, will present a concert in the Town Park at 8 p.m. on Thursday, Aug. 12.

All residents of the area are

## KILL ATHLETE'S FOOT GERM

One application of T-4-L stops itch and burning in MINUTES or your 48c back. In 3 to 5 days, infected skin sloughs off to expose more germs for the kill. Then watch HEALTHY skin appear! TODAY at Culver City Drug Store.

31-3n



116 N. Michigan

PLYMOUTH

Interior Decorating  
Service

- Private Counseling
- Draperies
- Carpet
- Furniture

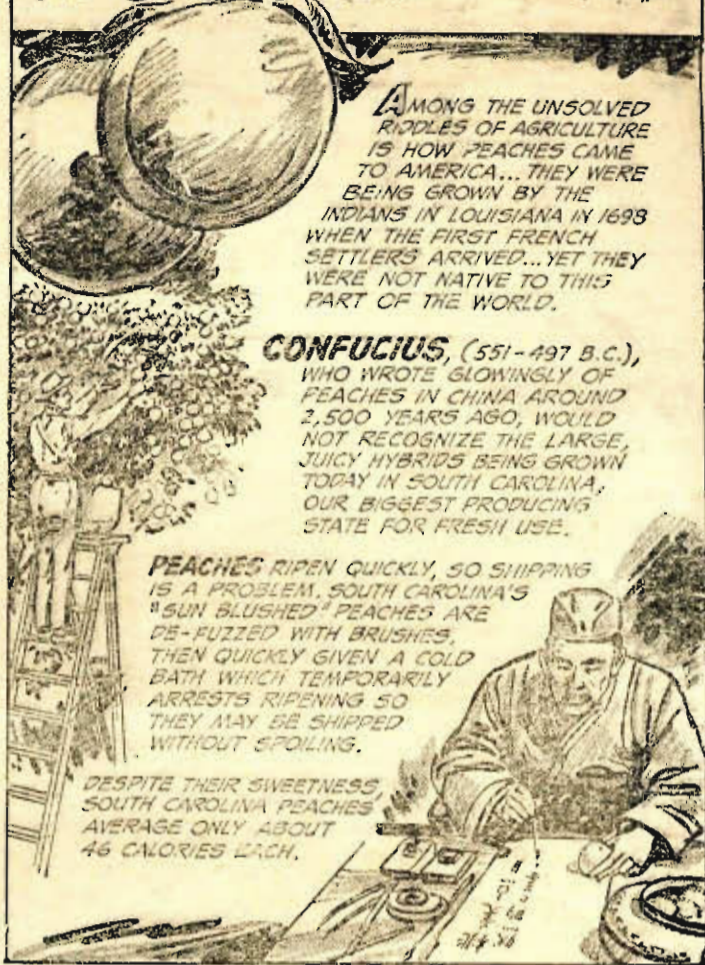
Complete Line of Samples

Phone 936-3751

31n

## In Our Time

4-Pratt



AMONG THE UNSOLVED  
RIDDLES OF AGRICULTURE  
IS HOW PEACHES CAME  
TO AMERICA... THEY WERE  
BEING GROWN BY THE  
INDIANS IN LOUISIANA IN 1693  
WHEN THE FIRST FRENCH  
SETTLERS ARRIVED... YET THEY  
WERE NOT NATIVE TO THIS  
PART OF THE WORLD.

CONFUCIUS, (551-497 B.C.),  
WHO WROTE GLOWINGLY OF  
PEACHES IN CHINA AROUND  
2,500 YEARS AGO, WOULD  
NOT RECOGNIZE THE LARGE,  
JUICY HYBRIDS BEING GROWN  
TODAY IN SOUTH CAROLINA,  
OUR BIGGEST PRODUCING  
STATE FOR FRESH USE.

PEACHES RIPEN QUICKLY, SO SHIPPING  
IS A PROBLEM. SOUTH CAROLINA'S  
"SUN-BLUSHED" PEACHES ARE  
DE-FUZZED WITH BRUSHES,  
THEN QUICKLY GIVEN A COLD  
BATH WHICH TEMPORARILY  
ARRESTS RIPENING SO  
THEY MAY BE SHIPPED  
WITHOUT SPOILING.

DESPITE THEIR SWEETNESS,  
SOUTH CAROLINA PEACHES  
AVERAGE ONLY ABOUT  
46 CALORIES EACH.

cordially invited to attend and the  
program is being planned to in-  
clude music for every taste.

The hour-long program is spon-  
sored by the Culver Jaycees and  
the Town Board.

## TAYLOR'S SIDEWALK DOLLAR DAY SHOE SALE

Friday and Saturday,  
August 6 and 7

**TAYLOR'S**

Home of Famous Shoes  
Rochester, Ind.

31n

## PICTURE OF HEALTH



Combines Terramycin with impor-  
tant vitamins to give calves today's  
best protection against scours and  
pneumonia.

Pfizer

**TERRAMYCIN**

SCOURS TABLETS

AVAILABLE AT

**LEITERS FORD ELEVATOR**  
Leiters Ford

"As Advertised in the Farm & Home Section"

## WIZARD OF OZ LODGE On Beautiful Bass Lake

Hotel and Dining Room Open to the Public  
Breakfast, Lunch and Dinner Served Daily

**Fabulous Food At Our**

**Friday Night Buffets 6-7:30 P.M.**

FREE PIANO RECITAL ON FRIDAY, AUG. 6

For Reservations Call Knox 772-3405

31-3n

# Society

## CHURCH EVENTS CLUB NEWS

### of the MAXINKUCKEE AREA

Please Phone Or Deliver All Items Direct To  
The Citizen — Viking 2-3377  
DEADLINE: 1 P.M. Tuesday of Each Week

## Engagements

### Parker-Fisher

Mrs. Orval Coby, Thorn Road, Route 2, Culver, announces the engagement and approaching marriage of her daughter, Miss Janet Parker, to Jeremy Fisher, son of Mrs. Russell Fisher, 404 East Washington Street, Culver, and the late Mr. Fisher.

The wedding date has been set for Saturday, Aug. 21.

§-§-§

### Women's Guild To Hold Meeting At Norris Lagoon

Members of the Women's Guild of The Grace United Church of Christ will assemble at the church basement at 7 p.m. on Thursday, Aug. 12, and will then go on to Dr. Norris' lagoon for their meeting. Members are asked to note the change in time of the meeting.

Mrs. Lee Jewel will be chairman of the program and others serving on the committee include Mrs. Noel Wagoner, hostess; Miss Osie Stahl, Mrs. Alvin Hartz, Mrs. Jesse Overmyer, and Mrs. Henry Henning.

§-§-§

### Janet Parker Honored At Bridal Shower

A bridal shower, honoring Miss Janet Parker, bride-elect, was held Friday evening, July 30, in the home of her mother, Mrs. Orval Coby, Thorn Road, Route 2, Culver.

Guests attending with the honored guest and her mother were Mrs. Ina Coby, Mrs. Russell Fisher, Mrs. Kenneth Miller Jr., Miss Martha Weaver, Mrs. Violet Starr, Mrs. Ralph Geiselman, the Misses Mabel and Bess Pura, and Mrs. Elgie Good.

Those sending gifts but unable to attend were Mrs. Eileen Dawson, Mrs. Irma Chatman, and Mrs. Kenneth Miller Sr.

Hostesses were Mrs. Susie Parker, Mrs. Glenda Parker, and Mrs. Pat Lynn. Games were played and refreshments were served.

§-§-§

### War Mothers To Meet

Members of the Culver Mothers of World War II will meet at 7:30 p.m. on Monday, Aug. 9, at the home of Mrs. Cleo Warren for their monthly business meeting.

§-§-§

The newspaper is the only medium that works 24 hours a day to bring the advertiser's name to the public.

## Tri Kappa Announces Patronesses For Benefit Bridge Parties Aug. 13

Friday the thirteenth is proving a lucky day for many summer residents and visitors who are being feted at the Tri Kappa bridge parties on August 13.

Mrs. Addison Craig is entertaining her three bridge foursomes for lunch at the Methodist Salad Bar before beginning play at her own home. Among her out-of-town guests are Mrs. Eugene Furry, Mrs. William Ellis, Mrs. Marshall Kizer, Mrs. Herbert Gibson, Mrs. Dan Gibson, all of Plymouth.

Mrs. Harrison Smitson, a summer lake resident from Tipton, has invited two foursomes from Tipton to play at the Robert Bolton home. Other patronesses at the Bolton home are Mrs. Robert Rossow, Mrs. L. J. Stone, and summer residents Mrs. Frank Osborn of Indianapolis and Mrs. Walter Foskett of Palm Beach, Fla. Among Mrs. Rossow's guests will be the wife of the Commander of the Culver Summer Navy School, Mrs. Charles de Moss of Princeton, N.J. At Mrs. Stone's table will be Mrs. Leigh Gignilliat of Chicago. Mrs. Osborn has asked summer lake residents who lived formerly or live now in Logansport: Mrs. George Graffis, Mrs. Albert Steinhilber, and Mrs. Dwight Withermuth.

Mrs. John Oldham's mother, Mrs. M. C. Finley of Marion, Ind., will bring a foursome from Marion to play at the Charles Crowe home. Also here Miss Linda Crowe will entertain "the younger set," one of her guests being Mrs. Ed Curtis (Susie Harrison) of Attica; and Mrs. Carol Humrichouser Jones of Plymouth will have a foursome, including her sister, Mrs. Erma Norris of California.

Mrs. Jack Campbell and Mrs. Edward Schultz have reserved six tables at the Kenneth Kraning home for their guests from South Bend, Argos, and Plymouth. Others playing at the Kraning home are two foursomes of Culver friends of Mrs. Jack Spencer and a foursome of Mrs. R. T. Lord of Kewanna. Mrs. Lord's guest list includes Mrs. Ted White and Mrs. Paul Ley of Kewanna and Mrs. Lawrence Kelsey of Phoenix, Ariz.

Mrs. William Norman is bringing from Indianapolis a foursome of doctors' wives to play at the Walker Winslow home. Her guests are Mrs. Leonard A. Ensminger,

Mrs. William Dugan, and Mrs. Merle Miller. Others having tables at the Winslow home are Mrs. John Batton and Mrs. A. W. Young of Kokomo and Mrs. Norman Michels of Sewickley, Pa., all summer residents of Lake Maxinkuckee. Mrs. A. N. Kurz, a guest at Mrs. Winslow's, is a new resident to Culver and is the mother of Jim Kurz of the Culver Inn.

Mrs. Edwin Becker is combining her entertaining for the bridge party with a swimming party afterwards at her cottage on East Shore Lane.

Mrs. Paul Zollars and Mrs. F. A. Shoaf of Attica will be guests of Mrs. Floyd Poston and Mrs. Wade Harrison, summer lake residents from Attica. They will play at the John Edgell home. Other patronesses at the Edgell home are Mrs. Everett Hoessel and Mrs. Barrett Irvine, who will entertain two tables of Culver friends. Others are summer lake residents Mrs. William Cleavenger of Hammond, who will bring friends from Hammond; Mrs. L. F. Grusenmyer of Logansport, who will entertain a foursome from Logansport; and Mrs. Douglas McDonald of Princeton, who will have among her guests her daughter, Mrs. William Kilborne, Jr., of Fort Worth, Texas.

Guests of Mrs. Norman Perry will be Mrs. Robert Robinson and Mrs. James Rocap of Indianapolis and Mrs. Barney Bannon of Warsaw. Also reserving tables for their guests at the Perry home are Mrs. E. O. Hershberger of Logansport, Mrs. Robert Discher, and Mrs. Joseph Clyne. Included among Mrs. Clyne's guests will be Mrs. L. Metzger McCutchan, a summer lake resident from Lebanon.

Mrs. Emory Baxter will be hostess to a foursome at Mrs. Chester

The Culver Citizen — Culver, Indiana — Aug. 5, 1965 — Page 3

Cleveland's. Guests at other tables here will be a foursome from Rochester, guests of Mrs. Howard Robbins, and a foursome from Plymouth: Mrs. Phillip R. Melangton, Mrs. T. C. Eley, Mrs. Henry Harper, and Mrs. Ward Rittenhouse.

Mrs. John Fell and Mrs. Jack Pearce, summer lake residents from Kokomo, have made reservations at the home of Mrs. Russell Hippensteel. Also Mrs. George Collyer will bring a foursome from Fort Wayne.

Mrs. Fred Adams, Mrs. Channing Mitzell, and Mrs. David Burke will entertain at the home of Mrs. Frank Bryant.

Playing at the Frank Setzler home will be guests of Mrs. C. W. Epley, Mrs. Howard Oberlin, and Mrs. Gerald Graham.

Mrs. Robert Rust and Mrs. William Snyder have reservations for foursomes at the home of Mrs. Wilbur Taylor, and Mrs. Robert Reichley at the Melvin Estey home.

§-§-§

### ADOPT TWIN BOYS

Mr. and Mrs. Daniel Kennedy of Eugene, Ore., have adopted newborn twin boys, Mark Edward and Michael Lane. Mrs. Kennedy is the former Joanne Amond, daughter of Mr. and Mrs. Frank Amond of Culver. Mr. Kennedy is currently an instructor at the University of Oregon and is completing his doctorate degree in educational psychology. For the coming academic year Mr. Kennedy will be an assistant professor at the University of Hawaii in Honolulu. Mr. and Mrs. Kennedy and son, Steve, visited in Culver last spring.

Subscribe To The Citizen — A GOOD newspaper in a GOOD town

## V.F.W. Ladies Auxiliary Holds Annual Family Picnic

Members of the V.F.W. Ladies Auxiliary met at the Town Park Monday evening, Aug. 2, for their annual family picnic with 30 members and guests attending. Hostesses for the evening were Mrs. Shirley Carter, chairman, Mrs. Norman Baker, and Mrs. E. W. Riester.

Following the meal Mrs. Clyde Hickman, president, conducted a short business meeting and announcement was made of the Third District meeting to be held in Michigan City on Sunday, Aug. 8, at 2 p.m.

§-§-§

Last-minute signaling is a dangerous driving habit, says the Chicago Motor Club. Whether you have mechanical turn indicators or use hand signals, the law says you must declare your intentions to turn at least 100 feet before reaching an intersection.

## My Neighbors



"Where he wants green she wants succotash. He wants storm cloud gray—she wants maiden blush pink...so they'll end up with white..."

# QUALITY GROCERS

*Fine Groceries and Meats  
At Low Prices*

109 S. MAIN ST.  
CULVER

LOCKER PLANT  
PHONE VI 2-2071

### SMUCKER'S

**PRESERVES** Blackberry and Peach  
Also Peach Butter ... 3 jars **\$1.00**

### Homespun

## Paper Napkins

160 count

in plastic bag

**21c**

## MIRACLE WHIP

qt. **45c**

### Peter Pan

**PEANUT BUTTER** .... 18-oz. jar **59c**

### Del Monte

**CATSUP** ..... 2 for **35c**

**PEARS** Richelieu  
In Heavy Syrup ..... No. 2 1/2 can **39c**

### Fresh Fingerhut

## Baked Goods

Every Day Except Monday

### Hoffman House

## Dill Pickles

qt. jar **25c**

## Milnot

"It Whips"

3 cans **29c**

**ROUND STEAK** Choice  
Grade ..... lb. **79c**

**MINCED HAM** or MEAT LOAF  
Eckrich ..... lb. **69c**

**GROUND BEEF** Extra  
Lean ..... 3 lbs. **\$1.39**

**LEG-OF-LAMB** Small,  
Meaty ..... lb. **59c**

**TURKEYS** 16 lbs. up ..... lb. **43c**

Also Fresh Dressed Fryers



## WE FINANCE HOME BUYING . . .

Current Dividend Rate 4%

## Marshall County Building & Loan Association

201 N. MICHIGAN ST. PLYMOUTH  
D. L. McKESSON, Secretary

# CULVER CALENDAR

FOR THE WEEK

**Thursday, August 5—**  
8:00 p.m.—Culver Women's Bowling Association meeting in Bank Auditorium.

**Monday, August 9—**  
4:00 to 5:00 p.m.—Brownie Girl Scouts meet at Methodist Church.  
4:00 to 5:30 p.m.—Junior Girl Scouts meet at Methodist Church.  
7:00 p.m.—Boy Scouts meet at Methodist Church.  
8:00 p.m.—V.F.W., Post 6919, will meet in the Post Home.

**Wednesday, August 11—**  
6:30 p.m.—Lions Club dinner meeting in Lions Den.

**Thursday, August 12—**  
7:00 p.m.—Women's Guild of Grace United Church of Christ will assemble at church basement and go to Dr. Norris' lagoon for meeting.  
7:30 p.m.—Meeting of Culver Mothers of World War II at the home of Mrs. Cleo Warren.  
8:00 p.m.—Business meeting of the American Legion at Legion Home.  
8:00 p.m.—Hibbard E.U.B. Ladies Aid will meet with Mrs. Vern McKee.

## Board of Pharmacy Urges Eradication Of Marijuana

The Indiana Board of Pharmacy charged with the eradication of Marijuana, by the Federal Bureau of Narcotics for the past four years, are again asking for cooperation in this worth while project.

Fine cooperation, during these four years, from almost everyone concerned has reduced the growth of this narcotic like weed. Continued assistance will be needed to

maintain this program of eradication.

Because of the expense and the time required to call on individual farmers, as has been done in the past, the Board is now forced to confine their time to spot checking at periodic intervals.

Every property owner and tenant is urged to spray or cut all Marijuana on their property. If sprayed early in the summer, 2-4-D spray will kill the weed, if later in the season 2-4-5 brush spray should be used.

It is extremely important that everyone assist in this program in

the area where this weed is prevalent. If you do not, then we will have lost all that has been gained during the last four years.

The Indiana Board of Pharmacy is very appreciative of the fine cooperation they have received in

the past and hope that all of you will continue in your efforts to eradicate and control marijuana.

Both State and Federal laws prohibit the growth of Marijuana on any property.

A GIFT SUBSCRIPTION to The Culver Citizen, the home town paper, is enjoyed 52 weeks a year. Only \$4; \$4.50 out-of-state. Beautiful gift subscription card with your name thereon mailed free.

For Gifts To Gladden Your Family

## KEEP SAVING Plaid Stamps

Be Sure To CHECK These Low, Low A & P PRICES!



NORTHERN GROWN

White Potatoes  
10<sup>lb.</sup> BAG 49<sup>c</sup>

Vine Ripe  
Cantaloupe <sup>30</sup>Size 3 for 85<sup>c</sup>

Red, Ripe  
Watermelon Whole ea. 59<sup>c</sup>

Yukon Club  
Root Beer • Orange • Strawberry • Cream • Ginger Ale • Many Others 24-oz. 10<sup>c</sup>

Vanilla Icing—Spicy & Raisin Filled  
Jane Parker Spanish Bar Cake ea. 33<sup>c</sup>

U. S. Inspected  
FRESH FRYERS lb. 29<sup>c</sup>

MARVEL Brand  
ICE CREAM  
Regular 69<sup>c</sup>  
• French Vanilla  
• Chocolate  
• Strawberry  
• Many Others  
1/2 Gallon Carton 59<sup>c</sup>

DOLE Brand  
PINEAPPLE JUICE  
46-OZ. CAN 39<sup>c</sup>

## Charmin' Chatty



A&P EXCLUSIVE  
Matel's Amazing  
Talking Doll!

Only  
4<sup>98</sup>

With a Purchase  
of \$5.00 or More  
At Your A&P

Says Hundreds of Different  
Things with Simple  
Changeable Records

Doll comes with 5 records plus  
FREE—Charmin' Chatty Game.

An Ideal Christmas Gift

Plymouth

**DOLLAR DAYS**

Friday & Saturday,  
August 6 & 7

MANY OUTSTANDING  
FOOTWEAR BUYS!

Group of Odds & Ends  
Only \$1<sup>00</sup> Pair

Group of Shoes Pair \$2<sup>00</sup>

Group of Shoes Pair \$3<sup>00</sup>

HOSE 2 Pair \$1<sup>00</sup>

MANY OTHER VALUES NOT ADVERTISED

*Swearingen's*  
Plymouth



**TO**

FRIDAY, AUGUST 6  
 Danny L. Thomas  
 Doris Yocom  
 Deidre Ann Crossgrove  
 Mary Crossgrove  
 Troy Heckaman  
 Mark Heckaman

SATURDAY, AUGUST 7  
 Ernest W. Carter  
 Marvin Maurer

SUNDAY, AUGUST 8  
 Mrs. Myrtle Myers  
 Roy Overmyer  
 Bill McLane  
 Jana Ellen McKee

MONDAY, AUGUST 9  
 Mrs. E. V. Boblett  
 Mrs. Elizabeth Porter  
 Gen. Delmar T. Spivey  
 Glennia Lynn McFarland

WEDNESDAY, AUGUST 11  
 Robert K. Kyle  
 Boh Wynn  
 Walter Hewitt Wise

THURSDAY, AUGUST 12  
 Ruth Anna Kersey  
 Donna Hatten  
 August L. Young

Mather AFB, Calif.

Following survival and specialized aircrew training at other bases, he will be assigned as a B-52 Stratofortress navigator-bombardier at Loring AFB, Maine. He will become a member of the Strategic Air Command, the nation's instantly ready intercontinental missile and bomber force.

A graduate of Aubbeenaubee Township High School, Leiters Ford, he attended Purdue University. He was commissioned in 1964 through the aviation cadet program.

His wife, Mary, is the daughter of Mrs. Helen Been of New Xenox, Ill.

The Culver Citizen — Culver, Indiana — Aug. 5, 1965 — Page 5

Airman 2/C Ronald Osborn left Tuesday morning, Aug. 3, for Camp K. I. Sawyer, Mich., after spending two weeks visiting his parents, Mr. and Mrs. Gerald Osborn, other relatives, and friends.

A HANDY NEWS BOX by The Citizen's front office door welcomes your news items for next week's paper 24 hours a day.

#### PLASTIC ENGINES

Plastics, which have made many inroads in automobile production, have a new target: the engine. Product Engineering, McGraw-Hill publication, reports that a British firm is at work on a plastic internal-combustion engine, which it believes will be practical within a decade.



- Exclusive bullet plating provides "golden" color and gives you a cleaner, harder bullet finish that will function better in all 22's.
- Redesigned hollow point bullet provides more uniform mushrooming.
- Protection from heat and cold.
- Won't collect lint or grit.
- PLUS the flat trajectory smashing power and exclusive "Kleanbore" priming features of famous Remington "Hi-Speed" sporting ammunition.

**Remington** **DUPONT**

"Kleanbore" is Reg. U. S. Pat. Off.  
 "Hi-Speed" is a trademark of Remington Arms Company, Inc., Bridgeport 2, Conn.

"As Advertised in the Farm & Home Section"

**MASTER  
HARDWARE**  
 Monterey



Second Lieutenant Edward A. Lane, son of Mr. and Mrs. Edward Lane of Route 1, Culver, has completed the U.S. Air Force advanced navigator-bombardier course at

USS TRUCKEE — Seaman Apprentice Paul Hartle, USN, son of Mr. and Mrs. Charles L. Hartle of Route 1, Culver, is serving with the Sixth Fleet in the Mediterranean aboard the fleet oiler USS Truckee.

Truckee, one of the Navy's largest and fastest fleet oilers, won the "E" for excellence in battle efficiency for the seventh consecutive year on July 6. The award is made to the ship in each class that proves itself to be superior to all others through a year long competition. This competition encompasses all areas of activity at sea. It includes competitive training engineering, gunnery, navigation, seamanship and other exercises.

Truckee now proudly wears a golden "E" with two gold service stripes. All hands also are authorized to wear the same badge on their sleeves to show men from other ships that they are crew members from the Golden "E" ship.

VII CORPS, GERMANY — Donald Hand, son of Mr. and Mrs. Donald B. Hand, 426 State St., Culver, was promoted to private first class, July 21, while serving with the 21st Artillery in Germany.

Hand, a clerk typist in Headquarters Battery of the 21st Artillery's 3d Missile Battalion, entered the Army in February, 1964 and completed basic combat training at Fort Knox, Ky.

The 23-year-old soldier is a 1960 graduate of Culver High School and attended Indiana University in Bloomington.

He is a member of Phi Delta Theta fraternity.

## PICTURE OF HEALTH



Combines Terramycin with important vitamins to give calves today's best protection against scours and pneumonia.



AVAILABLE AT  
**PLYMOUTH ELEVATOR**  
 Plymouth

"As Advertised in the Farm & Home Section"



#### A Living Memorial

Contributions for Research to perpetuate the memory of an associate, relative, or friend!

MAIL GIFTS TO  
 INDIANA HEART FOUNDATION  
 615 N. Alabama St., Indianapolis

Memorial Gifts Gratefully Acknowledged

Through the Generosity of

**THE STATE EXCHANGE BANK**

A community service project of the

Indiana Federation of Business and Professional Women

tfn

## PICTURE OF HEALTH

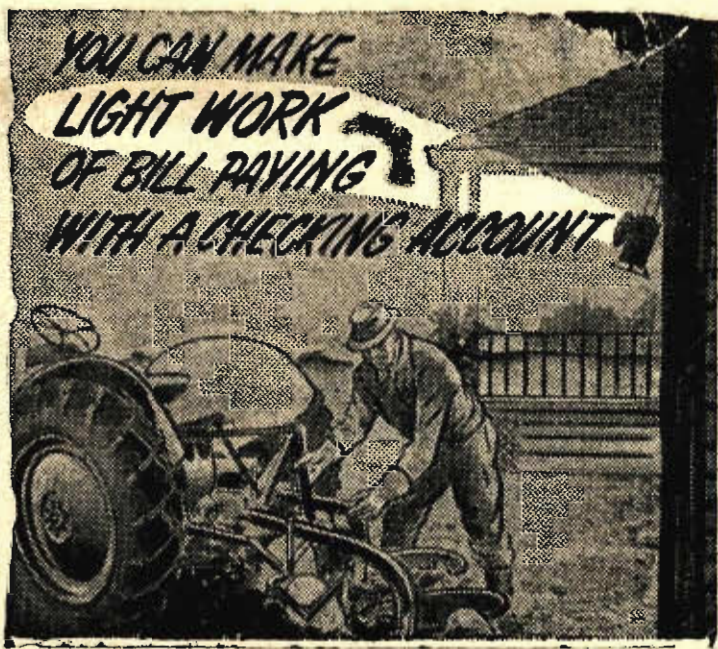


Combines Terramycin with important vitamins to give calves today's best protection against scours and pneumonia.



AVAILABLE AT  
**FOREST FARMS**  
 Rochester

"As Advertised in the Farm & Home Section"



So busy you keep right on going, even after sundown? Save working time by paying bills, and ordering supplies, with checks by mail. It's fast. And it's safe, too!

**We'll Welcome  
Your Checking  
Account**

We Pay 4% On Time Certificates Of Deposit — 3½% On Savings Accounts

Member of the Federal Deposit Insurance Corporation

Our Drive-In Window Is Open Continuously  
 From 8 A.M. to 5 P.M., Including The Noon Hour



**THE STATE EXCHANGE BANK**  
 CULVER — Indiana — ARGOS

## AN EXPIRED DRIVER'S LICENSE CAN BE EXPENSIVE!



**THE CHICAGO MOTOR CLUB**

WARNS MOTORISTS THAT, UNDER ILLINOIS LAW, DRIVING WITH AN EXPIRED DRIVER'S LICENSE CAN RESULT IN A FINE OF AT LEAST \$20 AND AS MUCH AS \$300! IF THE LICENSE EXPIRED MORE THAN SIX MONTHS BEFORE THE ARREST THE MINIMUM FINE IS \$50!

*Lincoln-March-CHICAGO MOTOR CLUB*

### BEHIND THE FARM MARKET SCENES

U. S. Department of Agriculture crop and livestock reports as well as President Johnson's plans to press harder in Viet Nam affected farm commodity markets during July, notes Jack Armstrong, Purdue University agricultural economist.

The U.S.D.A.'s Pig Crop report indicating smaller market receipts and reduced pork supplies for the foreseeable future has maintained hog prices in the \$24-\$25 range. The recent hot weather cut consumer demand for pork and has been somewhat responsible for a \$1 decline in hog prices from mid-July levels.

Armstrong says this drop was a major factor in triggering an up-to-a-dollar decline in nearby frozen pork belly futures contracts at the end of July. Hog receipts at major markets have been running 12 to 25 per cent below those of July, 1964.

Cattle prices during the last half of July showed signs of regaining some of their losses sustained during late June and early July. Lower numbers of cattle marketed at lighter weights, coupled with an improved wholesale beef trade, were primarily responsible for the improved prices, says Armstrong.

Nearby cattle futures contracts strengthened on the basis of the July 4 Cattle on Feed report which indicated reduction in heavyweight cattle. However, the nine per cent increase in total cattle in feedlots — primarily in the lighter weight groups — depressed distant futures contracts.

Feeder cattle prices held their spring and summer increases and remained fully steady on the basis of the favorable fed cattle market and better than average forage feed conditions. Feeder cattle prices at Kansas City were as much as \$4.50 per hundredweight above year ago levels.

Grain markets continued to reflect the influence of new crop prospect reports and international tensions during the last half of July.

Corn futures prices, which dropped about three cents a bushel as a result of the prospects of a bumper crop, recovered 1 to 1 1/2 cents on the strength of current demand. Cash corn prices have held about steady the last half of July.

Soybean prices were irregular, but generally stronger on the international outlook and crop reports. Closing soybean futures prices fluctuated as much as five cents a bushel daily. Prices ended about four cents a bushel higher

despite outlook for a bumper crop.

Wheat prices also reflected international developments and ended the month about one cent above the level of the first half of July.

In poultry markets, eggs started some seasonal advance, but weakened in the face of slower demand and surpluses. The Indiana-Ohio farm price of Grade A eggs increased as much as two cents a dozen during the first half of July when they reached 28-30 cents. But, most of this gain was lost and prices ended the month at the 26-27 cent level.

Broiler prices (Indiana-Ohio farm price) were about steady at the 15 1/2-16 cent level.

### ANTS OR TERMITES?

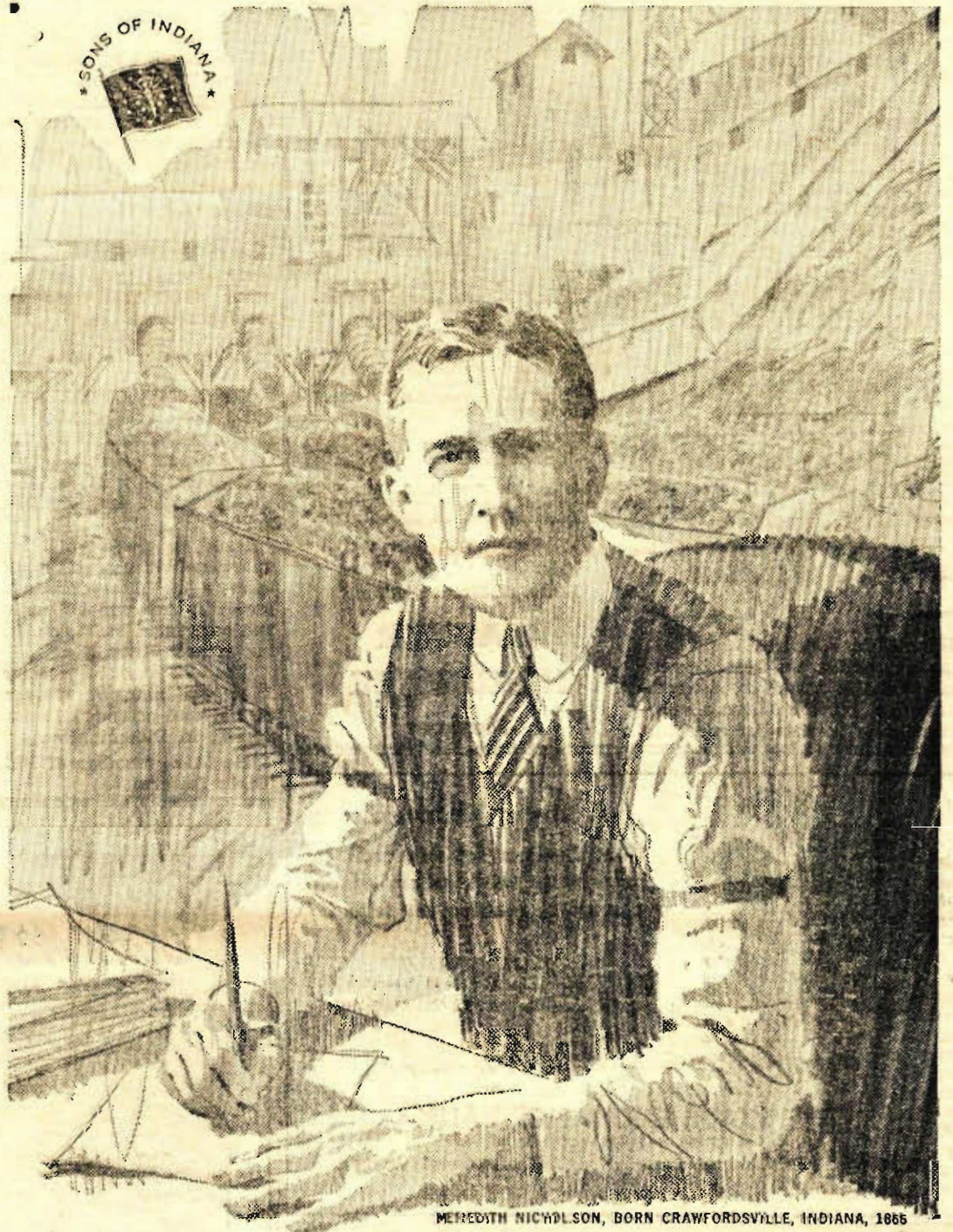
Do you observe flying insects? If so, perhaps you have seen swarms of small dark-bodied insects and wondered — ants or termites?

Dave Myers, Purdue University entomologist, explains how to tell the difference. The body of a termite is a smooth contour from the head to the tip of the abdomen. Ants have a thread or pinched-in waist. Termites have four equal-sized, silver-white wings twice as long as the insect. Ants have four wings with the front wings longer and larger than the hind wings. The wings of ants are only a little longer than the body and more transparent like those of a housefly.

In case you are still wondering — ants or termites — take a few of the insects to your county Extension agent or a local pest control operator, or send them to Purdue University's department of entomology.

If you do have termites, it is best to get in contact with an established pest control firm. Select a firm that is well known in your community and has a reputation for doing satisfactory work. The firm will chemically treat your home and guarantee results.

Visitors to Culver judge it largely by the people they meet here. What do you do to make Culver more attractive to visitors and newcomers?



MEREDITH NICHOLSON, BORN CRAWFORDSVILLE, INDIANA, 1865

## From a Colorado coal mine—an Indiana classic!

He was to become a world-famous writer and novelist, an American diplomat in foreign lands and the leading champion of Hoosier culture. But, at the moment, he was trying to run a coal mine near Denver, Colorado. Without too much success!

For Meredith Nicholson was a Hoosier and he was homesick. So much so that he spent his leisure hours writing a book about Indiana. He called it, *The Hoosiers* — a classic study of Indiana culture and literature.

Soon after, Nicholson left coal mining behind and returned to Indianapolis to continue writing. His best-selling novel, *The House of a Thousand Candles*, was followed by *A Hoosier Chronicle*, *The Valley of Democracy*, *The Main Chance* and many, many more.

In later years, Nicholson was U.S. ambassador to Paraguay, to Venezuela and to Nicaragua. He returned to Indiana in 1941 never to leave again. Today, his place is secure as a famous author of the Golden Age of Indiana Literature — and as a devoted "Son of Indiana."

Indiana Bell is proud, as we all are, of the many famous Hoosiers who have

walked through the pages of history. We are proud, too, of the men and women of Indiana Bell who, on their own time, devote themselves to the betterment of their communities. They fight fires, serve on school boards, help govern. They lead Boy Scouts and Girl Scouts. They assist the handicapped. They are busy in other fields of volunteer work.

It is Hoosiers like these who are working to improve their local communities. It is Hoosiers like these who maintain your telephone service as the finest in the world.



**VACATION TIME** is Long Distance Time

Have a wonderful vacation trip this year. But remember—wherever you go be sure to go first by Long Distance. Phone ahead for your reservations, or to let friends or relatives know when you'll arrive. Call back home to let the folks know how things are going. And remember, beginning at 8:00 P.M. Monday through Saturday and all day Sunday you can call anywhere in the U.S. (except Alaska and Hawaii) for \$1 or less, plus tax, 3 min., station to station.

Quality is really important in

## AUTO REPAIRS

For really top quality repairs, you can depend on our factory-trained experts to do a job that will satisfy you completely.

Need a motor overhaul? See us for top workmanship at very reasonable rates.



**GATES & CALHOUN**  
**CHEVROLET, INC.**

East Jefferson St. Phone Viking 2-3000

**CULVER**

Store Hours: 8 to 6 Service Dept. Hours: 8 to 5



**Indiana Bell**

Part of the Nationwide Bell System

Exercise improves the heart's efficiency, the Indiana Heart Association points out. The athlete's heart pumps more blood with fewer, but stronger, strokes per minute than the loafer's heart — saving quite a bit of wear and over the long haul.



By Mary Whitman

Want to get good marks for school projects?

"I think I should get an A," one young mother mentioned recently. Her project: helping a son with a 6th grade project in Indian lore.

Storybooks, crayons and household items all went into the effort. In a pinch, she says, you can make almost anything with crayons and paper bags or plain brown craft paper. A headdress of "feathers" can be cut out and colored. Wigwams can be made with paper and sticks. A round container of any size can be turned into a tribal drum, properly decorated.

Some schools assign a great many projects. Others may ask special work from a child only once a year. But at some point any school-goer may be asked to make a scale model of a scene, or build a special exhibit, or research a period of history and illustrate it in some way.

A number of play materials are handy in these situations.

"Children's inexpensive non-fiction books offer pictures that serve as a useful reference for school projects," reminds Dorothy Haas, an editor with Whitman Publishing Company of Racine, Wisconsin. There are books about rockets, about stars, about airports, about pioneers, about trees, about prehistoric monsters, and more. A trip to the counter of the nearest variety store can be a short-cut for a parent who must help provide ideas and low-cost materials.

A parent soon learns to accumulate many objects from shoeboxes to popsicle sticks that may be called for.

"First I get a book," agrees a project-wise father. "My son reads it with me. We cover the dining table with oilcloth. I set out what he needs, and he goes to work. The hardest part is not joining in, but just being an adviser."

Some people get so fascinated by a chance to set up the landing of Columbus or show the life of the Pilgrims that the whole family may help. Many parents even miss their "homework" after the children graduate.

## LOCALS

Mr. and Mrs. Gerald Osborn and son, Steve, gave a farewell dinner for their son, Ronald, Sunday, Aug. 1. Guests were Mr. and Mrs. Paul Osborn and daughter, Paula, of Mishawaka; Mr. and Mrs. Larry Osborn and son, Richard, of Buchanan, Mich.; and Mr. and Mrs. David Burns and sons of Culver. Afternoon callers were Mr. and Mrs. Lloyd Woolington of Kewanna.

Mr. and Mrs. Ralph Pedersen and children, Craig and Karen, of New Orleans, La., arrived Monday to spend several weeks with their parents, Mr. and Mrs. Paul Snyder, Sr., and Mr. and Mrs. Jacob Pedersen; also Mrs. Myrtle Crabb, Mrs. Pedersen's grandmother. Ralph Pedersen left Wednesday for Kokomo where he will attend Cliff Well's coaching school.

A GIFT SUBSCRIPTION to The Culver Citizen, the home town paper, is enjoyed 52 weeks a year. Only \$4; \$4.50 out-of-state. Beautiful gift subscription card with your name thereon mailed free.



- Exclusive bullet plating provides "golden" color and gives you a cleaner, harder bullet finish that will function better in all 22's.
- Redesign hollow point bullet provides more uniform mushrooming.
- Protection from heat and cold.
- Won't collect lint or grit.
- PLUS the flat trajectory smashing power and exclusive "Kleanbore" priming features of famous Remington "Hi-Speed" sporting ammunition.

**Remington** DU PONT

"Kleanbore" is Reg. U. S. Pat. Off., "High-Speed" is a trademark of Remington Arms Company, Inc., Bridgeport 2, Conn.

"As Advertised in the Farm & Home Section"

**BURR OAK  
HARDWARE**

Burr Oak



## Store Hours:

Mon., Tues., Wed.  
8:00 to 6:00

Thurs. 8:00 to 8:00

Fri. & Sat. 8:00 to 9:00

## PORK LOIN SALE

RIB END

**PORK  
CHOPS**

**49¢  
lb**

Center Cut

**CHOPS**

lb. 69¢

Loin End

**CHOPS**

lb. 89¢

**U.S.D.A. Choice Steaks  
Cut Like You Wish**

**ROLLED RUMP**

**ROLLED RIB  
ROASTS**

**ROUND BONE**

Kraft

**Miracle Whip**

Qt.

**39¢**

with \$2.00 order

Northern

**TOILET TISSUE**

**4 rolls 19¢**

with \$5.00 order

**RED POTATOES**

**10 lbs. 59¢**

Bibb or Boston

**Lettuce**

**2 hds. 29¢**

Red Label

**Butter**

Limit 2 Pounds

**lb. 59¢**

**HI-C** **FRUIT  
DRINKS**

**4 For**

**\$1.00**

RED LABEL

**FLOUR**

**5 Lb.**

**39¢**

SEALTEST

**MILK**

Plus Deposit

**59¢  
Gal.**

**The bold new challenge**

from **SUPERPICKER**

New Idea challenges any other Cornpicker to pick as clean, as fast, as plug-free as the new Superpickers... in any stand of corn.

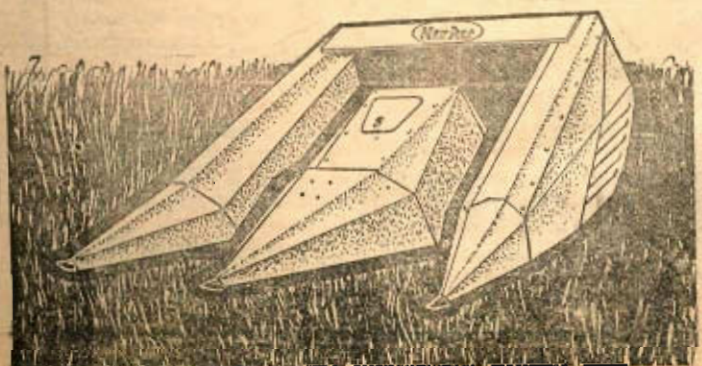
That's the challenge. Want the facts to back it up? Stop in. Right now we're trading big on Superpickers — pull type and mounted.

• Big Capacity! • Non-Stop Picking! • Pick'n husk, pick'n shell, pick'n grind... switch from one to another in minutes!

SUPERPICKER! On display at

"As Advertised in the Farm & Home Section"

**ARGOS IMPLEMENT & SUPPLY**  
Argos



# President Signs Social Security Amendments

Now that the President has signed the 1965 Social Security Amendments, some people will want to take action right away in order to protect their new benefit rights. Most others will need to take no action at all. As legislation providing health insurance for the aged and making other far-reaching changes in the social security program became effective with the ceremony in Independence, Missouri last Friday, Robert M. Ball, Commissioner of Social Security, proposed some "Do's" and "Don'ts" for the many millions of persons who will be affected.

"First of all, let me say to the 20 million people now receiving social security benefits: you don't need to take any action at all in order to get the increased cash benefit payments the law provides. The amount of the increase for the months of January through August 1965 will be paid to you in a separate check that will reach you in the latter part of September. The first regular checks reflecting the 7 percent increase will be mailed in October, covering the month of September."

Second: social security and railroad retirement beneficiaries now 65 or over will not need to take any action to secure their basic hospital protection under the new Health Insurance Program. All aged persons now on the rolls will receive in September or October a full information kit directly by mail describing this protection, which becomes effective July 1, 1966. Before this effective date a Health Insurance Card certifying to their eligibility for the services will automatically be sent to beneficiaries 65 or over.

Third: social security beneficiaries will not need to go to the social security office about the voluntary supplementary plan covering physicians fees and other benefits. At the time they get the basic information kit, they will receive an enrollment postcard giving them an opportunity to sign up for the added medical insurance program, which also becomes effective July 1, 1966.

Fourth, a special message to people 65 or over who have never worked under social security: although not qualified for cash social security benefits, these people may qualify for the basic hospital insurance protection under the new "medicare" program. Those receiving public assistance from the States may be signed up for the basic hospital insurance by their welfare agencies. Enrollments in the voluntary medical insurance plan can be accepted beginning Sept. 1, 1965. Therefore, persons over 65 who have not worked under social security should wait at least until Sept. 1 before visiting their social security office. Then they can sign up for the basic hospital insurance and, also, enroll in the medical insurance program if they wish that additional important protection.

Certain other groups affected by the law do need to take action. They need only inquire at their social security office, the Commission said. The major groups involved are:

\* Persons now 65 or over who are insured under social security but have never applied for benefits. Even though they may still be working full time, it would be desirable for these people to apply now to establish their benefit

rights. This will qualify them for hospital insurance protection and will also make sure they get any cash benefits to which they may be entitled commencing in 1966 because of more liberal retirement test provisions. Under the amendments, any earnings that a person has after applying for social security will automatically be included at a later date in a recomputation of benefits if it is advantageous to the individual; therefore no one can lose by filing for benefits as soon as possible.

\* Persons 72 or older not now getting benefits because they (or their husbands) had not worked enough under social security to qualify under the previous provisions of the law. These persons, if they have any social security credits at all, should get in touch with the nearest social security office right away, because the amount of time they needed to have worked under social security has now been reduced. Some persons 72 or over will now qualify for benefits of \$35 a month with as little as three quarters of coverage under social security. Benefits may also be payable to the wife or widow of such persons.

\* Widow age 60 or 61 at the time the law becomes effective. Beginning September, widows can choose to have their cash benefits start at age 60, instead of age 62, but at a reduced amount. Application for this purpose may be filed immediately.

\* Students 18 to 22 years of age whose social security benefits have been stopped, as well as others nearing age 18 who plan to continue in school. Benefits can be paid back to January 1966 to those who already have been dropped from the rolls, but only upon application at a social se-

curity district office. Those nearing age 18 and planning to stay in school or return to school should also visit a social security district office, in order to supply the information about their schooling which is necessary if benefits are to be paid after age 18.

\* A severely disabled worker may now collect disability insurance benefits if his condition has lasted or is expected to last for 12 full months — even though he may recover. Until now, he could not collect disability insurance benefits unless his disability was expected to continue for a long and indefinite period of time, or else cause his death. The Social Security Administration plans to search its records and get in touch with those who applied for but were denied disability insurance benefits during the past year because they were expected to recover. Others who think they may qualify under this change in the law should ask about getting benefits at the nearest social security office. There is no change in amount of work required under social security for eligibility for disability insurance benefits.

"Other persons who will want to inquire about possible new social security benefits," the Commission said, "include widows past 60 who have remarried, and women 62 or over who were divorced after at least 20 years of marriage."

"One other important Don't for persons over 65," Commissioner Ball emphasized: "Don't because of this new law cancel any hospital or medical insurance you may now have. None of the health insurance provisions of the new law give any protection whatsoever until July 1, 1966."

Your district office is located at 335 N. Lafayette Blvd., South

Bend, Ind. The telephone number is 233-7147.

## BUYING TOWELS

If you are thinking of towels as gifts, here are some pointers to help you choose.

Compare different weights and grades of towels so you learn the difference between sturdy towels and light weight, loosely woven ones, suggests Mrs. Bonnita Farmer, Purdue University clothing specialist.

Towels are more absorbent when the pile loops are thick and dense. Close looped towels dry faster since the moisture remains in the surface loops and does not penetrate the ground weave.

Long loops of double thread improve the absorbency and drying capacity of towels. However, loops longer than one-eighth inch tend to pull out.

A good indication of how well the towel will wear is the ground weave, the specialist says. It should be firm, close and tight, so it will hold the loops securely and give the towel strength. Examine the ground weave in the plain portion of the towel near the

hem or in the border where there are no loops. Hold the towel to the light to check for open spots in the weave — signs of less durability.

The side edges of the towel, called selvages, should be firm and evenly stitched. Hems at either end of the towel should be even, with all raw edges turned under at least one-quarter inch.

## OH, THE HOUSE-GOES ROUND AND ROUND

An Italian firm has put on the market a prefabricated house which revolves around an axle so that certain rooms of the house can face the sun or shade as desired, reports International Management, McGraw-Hill publication. The rotation system for the three-bedroom house can be activated by photoelectric cell, by electric energy, or by hand for which a special decorative handle is affixed in the living room.

Just a reminder to phone in your personal and society items for next week's Citizen. Please call Viking 2-3377 or deliver them in person.



# GRETTHER'S

"ACROSS from THE BANK"

Phone VI-2 2262

## FOOD MART

Keystone Meat QUALITY MEATS

100 N. MAIN ST. CULVER

Yellow Creek Platter

Sliced Bacon Lb. 69¢

Swift's Prem. Proten

CHUCK STEAK  
lb. 69¢

Fresh, All Beef

GROUND BEEF  
3 lbs. \$1.39

Big Value - Triple Pack

Full Pound

Potato Chips 59¢

Teanap

PAPER NAPKINS

200 count

25¢

Crystal Springs

BUTTER

lb. 59¢

Georgia Freestone

2 1/2 size can

Peaches

4 For \$1.00

Hills Bros.

COFFEE  
2-lb. can  
\$1.49

Blue Bonnet

MARGARINE  
lb. 25¢

"It Whips"

MILNOT

Tall Tin

9¢

Family Fare

LIQUID DETERGENT  
qt. 39¢

Scott

TISSUE  
roll 10¢

## ASSOCIATE DEGREES



INTERNATIONAL COLLEGE

Phone 742-1254

Fort Wayne, Ind.

Fall Term September 13

- \* Business Administration & Finance
- \* Secretarial Science
- \* Professional Accounting

With I.B.M.

25, 27, 29, 31, 33, 35n

The bold new challenge from SUPERPICKER

New Idea challenges any other Cornpicker to pick as clean, as fast, as plug-free as the new Superpickers . . . in any stand of corn.

That's the challenge. Want the facts to back it up? Stop in. Right now we're trading big on Superpickers — pull type and mounted.

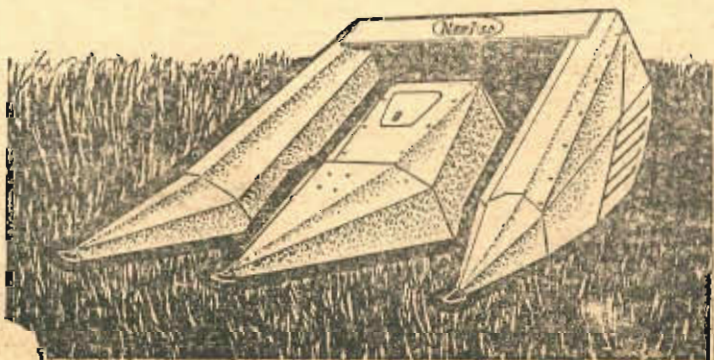
- Big Capacity! • Non-Stop Picking! • Pick'n husk, pick'n shell, pick'n grind . . . switch from one to another in minutes!

SUPERPICKER! On display at

"As Advertised in the Farm & Home Section"

COOK EQUIPMENT CO.

Knox



At Bass Lake, Indiana

It's The Horse Palace Restaurant

Broasted Chicken - Steaks

Fish and Chops

Carry Outs A Specialty

10 A.M. to 9 P.M.

Just 9 Mi. West Of Culver

On State Road 10

25-10n

## Do You Remember 'Way Back When?

Highlights of Culver News  
of 10, 20, 30, 40, and 50  
Years Ago This Week

AUGUST 3, 1935—

The 1935 Marshall County Fair at Argos is set for August 9-13. Fire of undetermined origin completely destroyed a large barn, filled that day with 75 to 80 tons of hay, on the Claude Newman farm three miles southwest of Culver Saturday evening. Firemen from Culver, Plymouth, Monterey, and Leiters Ford fought the fire with the loss estimated at \$8,000, which is partially covered by insurance.

The annual Lions-Club corn roast has been set for Aug. 10 at the Donald Davis farm, south of Culver, and is in charge of Norman Kelly, as announced by Lions Club president Donald Mikesell.

Rev. Vernon J. Bittner is the new pastor of the Maxinkuckee Methodist Church.

Rev. John P. Slaughter has assumed his duties as pastor of the Burr Oak E.U.B. Church.

In order to shorten the school day and reduce the amount of time grade students are required to be away from home, the high school class schedule has been adjusted for the coming year, Principal Raymond J. Ives Jr. announces.

AUGUST 1, 1945—

The Weinberg store at Toto was destroyed by fire Wednesday morning when the structure was hit by lightning during a severe electrical, wind, and rain storm. The loss is placed at about \$50,000 on the building and a similar amount on the merchandise.

H. W. Jasorka, 68-year-old Pennsylvania Railroad car inspector at Logansport, last week made his annual long-distance swim across Lake Maxinkuckee. He swam from the bath house at the Town Park to Long Point, a distance of 1½ miles in one hour and five minutes.

Miss Irma A. Stevens, daughter of Roscoe B. Stevens, and Lt. Irvin A. Overmyer, son of Mr. and Mrs. Ora Overmyer, were married Sunday at the Maxinkuckee Methodist Church.

William Minardow has sold the Leiters Ford elevator to Willis Cripe of Nappanee.

Funeral services were held Tuesday for Walker William

Winslow, son of Mr. and Mrs. Walker W. Winslow, of Indianapolis and Culver.

JULY 31, 1935—

Mr. and Mrs. Merrill Scruggs are the parents of a son, Michael Jackson, born July 23. Mrs. Scruggs was formerly Miss Helen Mattix.

Mr. and Mrs. Charles O. Campbell of Logansport are the parents of a son, John Richard, born July 26.

Edward C. Zehner, 68, retired hardware dealer of Monterey, died at his home recently.

On Sunday the second Mattix reunion took place at the Town Park with 50 relatives attending from nine different communities.

Mrs. Bert Alumbaugh and her daughter, Josianne, of Chicago, are the house guests for several days of Mr. and Mrs. Edgar Shaw.

JULY 29, 1925—

Mr. and Mrs. W. W. Osborn of Ober announce the marriage of their daughter, Dorothy Jane, to Ray James Powell of South Bend.

The marriage of Miss Marie Carothers, daughter of Mr. and Mrs. M. G. Carothers of North Township, to Dick Newman, son of Charles Newman of Culver, took place at the Federated Church at Plymouth Wednesday evening.

AUGUST 5, 1915—

We are informed that all of the furniture in the tenant house on the George M. Osborn farm burned last week. The tenant and his wife had left the house the day before.

## MELODY

Drive-In Theatre

Bass Lake, Ind.

WED., THURS., FRI.,

AUG. 4, 5, 6

William Holden, Alec Guinness, Jack Hawkins

**"The Bridge On The River Kwai"**

CinemaScope - Technicolor

SAT., SUN., AUG. 7, 8

Melina Mercouri, Peter Ustinov, Maximilian Schell

**"Topkapi"**

In Color

—Plus—

**"The Rounders"**

Glenn Ford, Henry Fonda

MetroColor

DUSK TO DAWN

SATURDAY, AUG. 7

5 BIG FEATURES

Admission: \$1.00

Rural Carrier Ezra Hawkins has sold his Ford to J. C. Reeder, the new agent, and W. O. Osborn's Ford has gone to D. W. Wolfe of Camden, formerly the banker in Culver.

Rain fell here on 14 days during the past month of July and on seven days during July of last year.

Cass Dillon's wheat made 30 bushels to the acre.

## Santa Anna

By Mrs. Guy Kepler

Attendance at Sunday School was 60 and was followed by services by Rev. Starke.

Mr. and Mrs. O. C. Gibbons, Mr. and Mrs. Ross Overmyer, Mrs. Lee Smith and Mary Lou, Mrs. Anna Flagg, Miss Bessie Flagg, and Mrs. George Babcock and Mari of Culver attended the Warner reunion at the home of Mr. and Mrs. Herbert Warner Sunday.

Mrs. O. C. Gibbons and Mrs. Leslie Mahler spent Wednesday in Chicago with a group on a tour.

Mr. and Mrs. Art Overmyer entertained with a party in their home Wednesday evening honoring Mr. and Mrs. Leslie Story and

## GAYBLE Theatre

NORTH JUDSON

AIR CONDITIONED FOR  
YOUR COMFORT

WED., THURS., AUG. 4, 5  
In Technicolor

With Stereophonic Sound  
WALT DISNEY'S

**"Mary Poppins"**

Show Time - 4, 6:30, 9 P.M.

ONE FULL WEEK

STARTS FRI., AUG. 6

Matinee Saturday at 2:30 Cont.  
and Sunday at 1:30 Cont.

## Lord Jim



EXPLODES  
ON THE  
SCREEN!

"Peter O'Toole  
is fascinating!"  
—N. Y. Herald Tribune

A Film by RICHARD BROOKS  
A Columbia Picture  
Filmed in SUPER PANAVISION 70°  
TECHNICOLOR

James Mason, Jack Hawkins

The Culver Citizen — Culver, Indiana — Aug. 5, 1965 — Page 9

children of Des Moines, Iowa. Others present were Mr. and Mrs. Carl Foust and children, Mr. and Mrs. Drisco Kreighbaum of Culver, Mr. and Mrs. Stephen Savage, Mrs. Lee Smith and Mary Lou, Mrs. Dorothy Overmyer and children and Mrs. Betty Mast and children. They had ice cream and cake.

Mrs. O. C. Gibbons visited Mrs. Maud Kreighbaum at the Klapp Nursing home in Argos Tuesday.

Sunday visitors of Mr. and Mrs. Guy Kepler were Mr. and Mrs. Philip Peer, Beverly and Steven, Mr. and Mrs. John Kepler and Linda, and Mr. and Mrs. William Thompson.

Mr. and Mrs. Max Gibbons, and Mr. and Mrs. Merle Gibbons and Gary of Plymouth were Sunday evening supper guests of Mr. and Mrs. Everett Gibbons.

Mr. and Mrs. Max Gibbons were Saturday evening supper guests of Mr. and Mrs. Jimmy Downs in Rochester.

Mr. and Mrs. Brent Goheen and Lisa visited Mr. and Mrs. Everett Gibbons Saturday evening.

Mr. and Mrs. Gilbert Simons, Mr. and Mrs. Charles Goheen and Sonja, Mr. and Mrs. Norman Davis, Jim Davis and children, Leroy Davis, Mr. and Mrs. Whitney Kline, Mr. and Mrs. Merle Shivers and Cheryl, Mr. and Mrs. Welcome McFarland, Mr. and Mrs. Wayne Ringer and children and Mr. and Mrs. Loy Fishburn attended the Lowe Reunion at the home of Mr. and Mrs. Lewis Grix near South Bend Sunday. There were 85 present.

Mr. and Mrs. Charles Goheen and Sonja called on Mr. and Mrs. Roy Millican in South Bend Sunday evening.

## EL RANCHO Theatre

Doors Open at 6:50 P.M.

FRI., SAT., AUG. 6, 7

Kim Novak, Richard Johnson, Angela Lansbury, Vittorio DeSica, Leo McKern, George Sanders, Lilli Palmer

**"The Amorous Adventures Of Moll Flanders"**

Technicolor - Panavision

SUN., MON., TUES.,

AUG. 8, 9, 10

Cont. Sunday at 3:00

**"The Family Jewels"**

Jerry Lewis, Sebastian Cabot, Miss Donna Butterworth

Mr. and Mrs. Merle Gibbons and Gary of Plymouth spent Thursday evening with Mr. and Mrs. Charles Goheen and Sonja.

## INSTANT HAVOC

A quiet corner tavern can be turned into a bedlam of strident tones and writhing bodies, thanks to instant discotheque kits, reports Business Week. The kits which are said to turn a tavern into the latest rage overnight include a juke box, floor-level speakers, prefabricated hardwood dance floor, table displays and napkins, phosphores wall panels featuring wiggly dancers, specially programmed records and banners and signs.

If you're allergic to money stay away from The Culver Citizen Classified Ads. But for profitable advertising results, call VJ 2-3377.



Plymouth, Ind.

Open at 7 - Shows at Dusk  
Children under 12 always Free

WED., THURS., FRI.,

AUG. 4, 5, 6

**"Under The Yum Yum Tree"**

In Color

Jack Lemmon, Carol Lynley, Dean Jones

**"The Long Ships"**

In Color

Richard Widmark, Sidney Poitier, Russ Tamblyn

SATURDAY ONLY, AUG. 7  
Triple Horror and Action Show!

**"The Old Dark House"**

In Color

with Tom Poston

**"Strait-Jacket"**

Joan Crawford, Diane Baker

**"Stage To Thunder Rock"**

with Barry Sullivan

SUN., MON., TUES.,

AUG. 8, 9, 10

**"Roustabout"**

In Color

Elvis Presley, Joan Freeman, Barbara Stanwyck

**"Psycho"**

Anthony Perkins, Vera Miles

TUESDAY NIGHT - ALL YOU  
CAN HAUL FOR \$1.50 A LOAD

## PICTURE OF HEALTH



Combines Terramycin with important vitamins to give calves today's best protection against scours and pneumonia.



**TERRAMYCIN**  
SCOURS TABLETS

AVAILABLE AT

**STOCKMAN FEED MILL**

Argos

"As Advertised in the Farm & Home Section"

## The bold new challenge from SUPERPICKER

New Idea challenges any other Cornpicker to pick as clean, as fast, as plug-free as the new Superpickers... in any stand of corn.

That's the challenge. Want the facts to back it up? Stop in. Right now we're trading big on Superpickers — pull type and mounted.

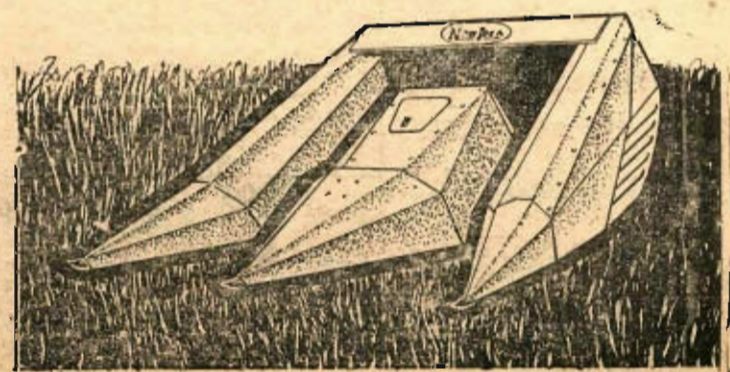
• Big Capacity! • Non-Stop Picking! • Pick'n husk, pick'n shell, pick'n grind... switch from one to another in minutes!

SUPERPICKER! On display at

"As Advertised in the Farm & Home Section"

## GARDNER FARM EQUIPMENT

Walkerton



RAY WICKER  
FORD SALES

OPEN

MON., WED. and  
FRI. NIGHTS  
UNTIL 9 O'CLOCK

415 Lake Shore Drive  
Culver

271fn

## LIGHTNING DUDE RANCH

- Horse Back Riding  
Riding Lessons
  - Children's Afternoon  
Playcamp
- Every Thursday 12 to 5.  
Bus pickup at high school.  
Cost \$1.75.

SPECIAL: This ad good for two Playcamp guests for the price of one on Thurs., August 5 and August 12.

Location: 9 Mi. West Of Culver  
On State Road 10

31n

**Summer Shoes**

BALL BAND

SUMMERETTES

Greatly Reduced

All sizes and styles

LEATHER FLATS

Values to \$5.98

**\$2.00 & \$3.00**

**Sandals**

Leather & Straw

**Reduced**

**House Slippers**

**\$1.00**

LADIES'

**Night Gowns**

**& Pajamas**

Were \$2.98

**Now \$1.98**

**Ladies' Blouses**

Were \$1.99 **NOW \$1.49**

Were \$2.99 **NOW \$1.99**

Were \$3.99 **NOW \$2.99**

Were \$4.99 **NOW \$3.99**

Were \$5.99 **NOW \$3.99**

Sizes 30 to 44

**Summer Jewelry**

**2 for \$1.00**

**Bargain Table**

SOME GOOD BUYS

LADIES'

**Knee Pants**

Were \$5.98 **NOW \$3.98**

Were \$4.98 **NOW \$3.98**

Were \$3.98 **NOW \$2.98**

Were \$2.98 **NOW \$1.98**

**Beach Hats**

YOUR CHOICE

**\$1.00**

# THE *Kelly* SHOP

110 N. Main St. — Culver, Ind.

## ANNUAL SUMMER CLEARANCE

(Our Largest Sale)

# SALE

### STARTS 8:30 FRIDAY, AUG. 6

Open 8:30 A.M. to 8:30 P.M. Friday — 8:30 to 5:30 Saturday

### A Complete Sell Out Of CATALINA SWIMWEAR

Ladies' Sizes 30-40

Were \$15.00 **NOW \$ 9.98**      Were \$18.00 **NOW \$12.98**

Were \$16.00 **NOW \$10.98**      Were \$20.00 **NOW \$13.98**

Were \$17.00 **NOW \$11.98**      Were \$24.00 **NOW \$15.98**

Were \$26.00 **NOW \$16.98**

Children's Sizes 4 to 14

Were \$1.98 **NOW \$1.50**      Were \$4.98 **NOW \$2.98**

Were \$2.98 **NOW \$1.98**      Were \$5.98 **NOW \$3.98**

Were \$3.98 **NOW \$2.98**      Were \$7.98 **NOW \$4.98**

### SALE OF SPRING AND SUMMER DRESSES

Ladies' Sizes 7 to 20 — 12½ to 24½

Were \$4.98 **NOW \$3.98**      Were \$10.98 **NOW \$ 7.98**

Were \$5.98 **NOW \$3.98**      Were \$12.98 **NOW \$ 9.98**

Were \$6.98 **NOW \$4.98**      Were \$14.98 **NOW \$10.98**

Were \$8.98 **NOW \$5.98**      Were \$16.98 **NOW \$12.98**

### SPORTS WEAR

#### Shorts, Jamaicas & Pedal Pushers

Were \$2.98 **NOW \$1.98**      Were \$4.98 **NOW \$3.98**

Were \$3.98 **NOW \$2.98**      Were \$5.98 **NOW \$3.98**

#### Smocks &

#### Maternity Wear

Were \$2.98 **NOW \$1.98**

Were \$3.98 **NOW \$2.98**

#### SPECIAL

#### All Weather

#### Coats

Several Colors

#### CHILDREN'S

#### Hooded

#### Sweat Shirts

and

#### Corduroy Jackets

REAL BARGAINS

**CLOSED THURSDAY IN PREPARATION**

ALL SALES FINAL — NO RETURNS — NO EXCHANGES

No Gift Wrapping On Sale Merchandise

#### Ladies' Skirts

Were \$3.98 **NOW \$2.98**

Were \$4.98 **NOW \$3.98**

Were \$5.98 **NOW \$3.98**

Were \$7.98 **NOW \$5.98**

Size 22 to 32

#### Girls' Dresses

1 to 3x

3 to 6x - 7 to 14

Were \$2.98 **NOW \$1.98**

Were \$3.98 **NOW \$2.98**

Were \$4.98 **NOW \$3.98**

Were \$5.98 **NOW \$3.98**

GIRLS'

#### Summer Pajamas

Sizes 4 to 14

Were \$1.98

**Now \$1.49**

CHILDREN'S

#### Shorts, Jamaicas & Pedal Pushers

Sizes 1 to 6x

Were \$1.98 **NOW \$1.25**

Were \$1.19 **NOW .79**

GIRLS'

#### Short Sets

**Now**

**\$1.98 & \$1.49**

#### Girls' Blouses

Were \$1.98 **NOW \$1.49**

Were \$1.69 **NOW \$1.19**

Were \$1.00 **NOW .79**

#### Ladies' Slacks

Sizes 10 to 18

Were \$3.98 **NOW \$2.98**

Were \$4.98 **NOW \$3.98**

Were \$5.98 **NOW \$3.98**

#### Yard Goods

Group No. 1

**3 yds. \$1.29**

Group No. 2

**2 yds. \$1.50**

## SNACKIN' TIME

Summer time is often snackin' time — friends drop in to chat, children get extra hungry playing outside.

Well chosen snacks supply foods important to the diet. If fruit and juices, raw vegetable strips, simple sandwiches and milk are available at snack hours, children may be less tempted to eat rich foods that may spoil their appetite for the next meal, says Miriam Eads, Purdue University food specialist.

For nutritious snack ideas, see Miss Eads' publication "Snacking Time," published by the Indiana Cooperative Extension Service at Purdue.

The publication offers recipes and suggestions for a variety of foods — from beverages to dips. Recipes vary from cool punches like Apricot Ambrosia, English Wassail, Currant Ginger and Frozen Fruit Punch to hearty beverages like Hot Choco-Mint and Coffee Cereal Nog.

Tips on preparing sandwiches, suggestions for sandwich fillings and ideas for meat and cheese dips are also included.

Single copies of "Snacking Time," HE-453, are free to Indiana residents. You may obtain one at county Extension offices, or from the Agricultural Publications Office, AES Building, Purdue University, Lafayette, Ind. 47907. A postcard request is sufficient.

## WE WANT YOUR NEWS!

PHONE VI 2-3377

If you have news  
or a news tip.



## Zenith

### Hearing Aids

Audio Analyzer Testing  
One Year Guarantee  
Five Year Service Plan  
Batteries, Accessories,  
and Complete Service  
Private Selection Room

**DERF**

JEWELERS

38 Years Dependable Service

115 N. Michigan, Plymouth

Phone 936-2920

31-33n



- Exclusive bullet plating provides "golden" color and gives you a cleaner, harder bullet finish that will function better in all 22's.
- Redesignated hollow point bullet provides more uniform mushrooming.
- Protection from heat and cold.
- Won't collect lint or grit.
- PLUS the flat trajectory smashing power and exclusive "Kleanbore" priming features of famous Remington "Hi-Speed" sporting ammunition.

Remington DU PONT

"Kleanbore" is Reg. U. S. Pat. Off.  
"Hi-Speed" is a trademark of Remington Arms Company, Inc., Bridgeport 2, Conn.

"As Advertised in the  
Farm & Home Section"

**VILLAGE  
HARDWARE**

Leiters Ford

**Don't Drive Yourself to Sleep!**

MARATHON DRIVING IS A DEADLY ENEMY OF THE VACATIONING MOTORIST!

THE CHICAGO MOTOR CLUB OFFERS THESE

**SAFETY TIPS**

- START EARLY AND STOP EARLY.
- STOP EVERY TWO HOURS FOR REFRESHMENT.
- TAKE TURNS DRIVING IF POSSIBLE.
- AVOID HIGHWAY HYPNOSIS — TALK — PLAY RADIO — AVOID HEAVY MEALS.

Buy Your Next Letterheads At The Citizen



## Make No Mistake About It

As a customer you are the finest asset that we possess.

You add spring to our step and joy to our heart. You make life worth living for without you we couldn't exist.

Make no mistake . . . we keep this in mind when we help you choose your insurance with care, assist you in the prompt settlement of a claim.

WE WOULD LIKE TO BE YOUR AGENT!



## STATE EXCHANGE INSURANCE AGENCY

State Exchange Bank Building — CULVER

Phone 842-3321

Hampton Boswell, Manager

Robert Cultice, Agent

Jerry Wyman, Agent

31n

## LOCALS

Mrs. Emory R. Baster, 1450 East Shore Drive, entertained with a dessert party from one to three o'clock Monday afternoon. Guests included many of the residents of the Lake area, as well as townspeople and their out-of-town

guests. Mrs. Baxter's daughter, Mrs. John McFaddin, presided at the tea and coffee service.

A GIFT SUBSCRIPTION to The Culver Citizen, the home town paper, is enjoyed 52 weeks a year. Only \$4; \$4.50 out-of-state. Beautiful gift subscription card with your name thereon mailed free.

## Notice To Taxpayers Of Tax Levies

In the matter of determining the Tax Rates for School Purposes of the School Corporation of Culver Community Schools, Marshall County, Indiana Before the Board of School Trustees.

Notice is hereby given the taxpayers of Culver Community Schools Corporation, Marshall County, Indiana, that the proper legal officers of said school corporation at their regular meeting place on the 26th day of August 1965 will consider the following budget:

### BUDGET CLASSIFICATION FOR SCHOOL CORPORATION

Special School Fund		F. Fixed Charges	
A. General Administration		G. Auxiliary Activities	3,000
1. Bd. School Tr. & Sec. Office	\$ 4,400	H. Debt Service	2,250
2. Office of Supt. of Schools	14,600	I. Capital Outlay	13,000
B. Instruction	22,495	Total Special School Fund	\$212,865
C. Coordinate Activities	37,600	Tuition Fund	
D. Operation of School Plant	48,100	B. Instruction	\$453,100
E. Maintenance	30,750	F. Fixed Charges	6,000
		Total Tuition Fund	\$459,100

### ESTIMATE OF FUNDS TO BE RAISED

FUNDS REQUIRED FOR EXPENSES TO DECEMBER 31st OF INCOMING YEAR:	Special Fund	Tuition Fund
1. Total Budget Estimate for ensuing year, Jan. 1 to Dec. 31, 1966, inclusive	\$212,865	\$459,100
2. Necessary Expenditures July 1 to Dec. 31, present year	91,300	154,600
3. Additional Appropriations to be made July 1 to Dec. 31 of present year	3,380	9,000
4. Outstanding Temporary Loans to be paid before Dec. 31 of present year — not included in line 2 or 3		57,000
5. Total Estimated Expenditures (Add lines 1, 2, 3 and 4)	207,545	679,700
FUNDS ON HANDS AND TO BE RECEIVED FROM SOURCES OTHER THAN PROPOSED TAX LEVY		
6. Actual Balance June 30th of present year	\$5,643	58,907
7. Taxes to be collected, present year (December Settlement)	39,071	121,120
8. Miscellaneous Revenue to be received July 1st of present school year to Dec. 31st of next school year (Schedule on file in office of School Board).		
a. Special Taxes	23,700	39,500
b. All Other Revenue	71,308	256,426
9. Total Funds (Add lines 6, 7, 8a, and 8b)	219,722	475,953
10. NET AMOUNT REQUIRED TO BE RAISED FOR EXPENSES TO DEC. 31st OF ENSUING YEAR (Deduct line 9 from line 5)	87,823	203,747
11. Operating balance (Net in excess of expenses from Jan. 1 to June 30, less miscellaneous revenue for the same period)	23,000	55,000
12. AMOUNT TO BE RAISED BY TAX LEVY (Add lines 10 and 11)	110,823	258,747

### PROPOSED TAX LEVIES

Funds	Levy on Property	Amount to Be Raised
Special	\$ .72	\$110,823
Tuition	1.66	258,747
Cumulative Building Fund	.64	98,490
Total	\$3.02	\$468,060

Note: The established rate for the Cumulative Building Fund is 80 cents; the rate payable in the year 1966 has been reduced to 64 cents on account of \$25,700 to be received from the State Property Tax Relief Distribution.

### COMPARATIVE STATEMENT OF TAXES COLLECTED AND TO BE COLLECTED

(Tabulate below amount to be collected in current year and amount collected in the previous year.)

Funds	Collected 1964	To be Collected 1965
Special	\$112,868	\$ 92,661
Tuition	\$132,083	287,250
Total	\$244,951	\$379,911

Taxpayers appearing shall have a right to be heard thereon. After the tax levies have been determined and presented to the county auditor not later than two days prior to the second Monday in September, and the levy fixed by the county tax adjustment board, or on their failure so to do, by the county auditor, ten or more taxpayers feeling themselves aggrieved by such levies, may appeal to the state board of tax commissioners for further and final hearing thereon by filing a petition with the county auditor on or before the fourth Monday of September or on or before the tenth day after publication by the county auditor of tax rates charged, whichever date is later, and the state board of tax commissioners will fix a date for hearing in this county.

Dated this 2nd day of August 1965

WOODIE MCGLOTHIN  
WALTER JOHNSON  
OSCAR WESSON  
THOMAS RUSSELL  
EVERETT DOWD  
Board of School Trustees

31-2n

IF YOU CANNOT USE THIS Certificate PLEASE GIVE IT TO A FRIEND.

## Your Child's Picture . . . FREE!

(WITH THIS CERTIFICATE)

We will give you ABSOLUTELY FREE a lovely 5 x 7 portrait photograph as a special get acquainted gift! Up to 12 cute poses will be taken. There is NO CHARGE and NO OBLIGATION to buy anything. You may, if you wish, order additional photographs direct from the studio but that is up to you.

ONE DAY ONLY!

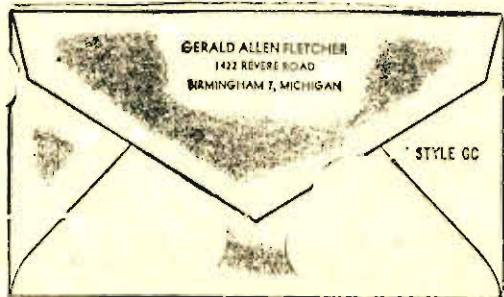
**Saturday, August 7 - Culver**  
**KLINE'S APPLIANCES**

No Appointment Necessary! Hours: 10 a.m. to 4 p.m.



Portraits by WESTVALE STUDIOS  
Nationally famous for their portraits of children exclusively. Children from 2 months up are eligible. Only one certificate per family. GROUP PICTURES WILL ALSO BE TAKEN

## Try This Easy Payment Plan Rytex Bill-Paying Envelopes with your name and address



It's never fun to part with money but B-P Envelopes make it a bit less painful. Handy for mailing in coupons, contest entries — win a trip to outer space or some lesser prize! Saves using up your regular stationery envelopes for odd-and-end correspondence chores.

Fine quality white vellum with your name and address in blue ink in imprint style shown. Thinking of giving a smart and useful gift to someone? Rytex B-P Envelopes are ideal. They'll be truly individual with that certain someone's name and address.

**500 B-P Envelopes  
For Only \$5.70**  
(plus tax)

**200 B-P Envelopes For Only \$3.00**  
(plus tax)

**THE CULVER PRESS, INC.**  
Press Bldg. — CULVER

Blow your horn if you must, but not at a pedestrian. According to the Institute for Safer Living of the American Mutual Liability Insurance Company, a sudden blast from an auto horn more often than not only succeeds in startling and confusing a pedestrian rather than alerting him to your approach. Right or wrong, a pedestrian may appear on the roadway almost anywhere and motorists must be prepared to assume responsibility for their safety.

Subscribe To The Citizen

### MARKETS

Shelled Corn	1.22
Wheat	1.39
Ear Corn	1.20
Soybeans	2.64
Oats	.78

### Notice

OF HEARING ON  
FINAL ACCOUNT  
STATE OF INDIANA  
MARSHALL COUNTY, ss:  
IN THE MARSHALL COURT  
IN THE MATTER OF THE ESTATE OF ALVA R. McKESSON, Deceased ESTATE NO. 7699

Notice is hereby given that the undersigned personal representative of the above captioned estate, has presented and filed:

(a) A final account in final settlement of said estate and petition to settle and allow account.

(c) Petition for authority to distribute estate.

and that the same shall be heard in the court room of said Court on the 13th day of August, 1965, at which time all persons interested in said estate are required to appear in said Court and show cause, if any there be, why said account should not be approved. And the heirs of said decedent and all others interested are also required to appear and make proof of their heirship or claim to any part of said estate.

HARLEY McKESSON and THE STATE EXCHANGE BANK, Culver, Ind.  
Personal Representatives  
/s/ HARVEY E. PHILLIPS  
Clerk of the above captioned Court  
W. O. OSBORN  
Attorney for Estate

31-2\*

## Notice To Taxpayers Of Tax Levies

In the matter of determining the tax rates for certain purposes by Union Township, Before the Township Advisory Board, Marshall County, Indiana

Notice is hereby given the taxpayers of Union Township, Marshall County, Indiana, that the proper officers of said township, at their regular meeting place, on the 31st day of August, 1965, will consider the following budget:

TOWNSHIP BUDGET CLASSIFICATION			
<b>Township Fund</b>		<b>Salary and Fees</b>	40.00
Pay of Trustee, Rent, Clerical and Travel Expenses	\$2827.50	Other Justice of the Peace Expense	100.00
Books, Stationery, Printing and Advertising	300.00	Other Civil Township Expenses	650.00
Care of Cemeteries	700.00	Total Township Fund	\$4617.50
Justice of the Peace		<b>Fire Fighting Fund</b>	
		Fire Protection	5875.00
		<b>Library Fund</b>	
		Total Library Fund	5013.00
		<b>Recreation Fund</b>	
		Total Recreation Fund	1600.00
		<b>Township Poor Relief Fund</b>	
		Total Direct Relief	1500.00
		<b>Total Township Poor Relief Fund</b>	1500.00

ESTIMATE OF FUNDS TO BE RAISED			
OF INCOMING YEAR			
1. Total Budget Estimate for incoming year, Jan. 1 to Dec. 31, 1966, inclusive		<b>Township Fund</b>	<b>Fire Fighting Fund</b>
2. Necessary Expenditures, July 1 to Dec. 31, present year, to be made from appropriations unexpended	3000.00		
5. Total Funds Required (Add lines 1 and 2)	7617.50		
<b>FUNDS ON HAND AND TO BE RECEIVED FROM SOURCES OTHER THAN PROPOSED TAX LEVY</b>			
6. Actual Balance, June 30th of present year	4949.00		
7. Taxes to be collected, present year (December Settlement)	1630.00		
8. Miscellaneous Revenue to be received, July 1 of present year to Dec. 31 of incoming year (Schedules on file in office of Township Trustee):			
a. Special Taxes (See Schedule)	90.00		
b. All Other Revenue (See Schedule)	200.00		
9. Total Funds (Add lines 6, 7, 8a and 8b)	6869.00		
10. NET AMOUNT REQUIRED TO BE RAISED FOR EXPENSE TO DEC. 31st OF INCOMING YEAR (Deduct line 9 from line 5)	728.00		
11. Operating Balance (Not in excess of expenses from Jan. 1 to June 30, less miscellaneous revenue for same period)	2000.00		
12. AMOUNT TO BE RAISED BY TAX LEVY (Add lines 10 and 11)	\$2728.00		

PROPOSED LEVIES			
Net Taxable Property: Culver — \$2,633,630	Union Township — \$7,161,820		
<b>Funds</b>		<b>Levy on Property</b>	<b>Amount to Be Raised</b>
Township		.03	\$ 2728
Fire Fighting (Township Only)		.04	2861
Library (Township Only)		.07	5013
Recreation Fund		.01	545
Total		.15	\$11,147

COMPARATIVE STATEMENT OF TAXES COLLECTED AND TO BE COLLECTED  
(Tabulate below amount to be collected in present year and amounts collected in each of the previous three years.)

Funds	Collected 1962	Collected 1963	Collected 1964	To be Collected 1965
Township	\$ 5,361	\$ 4,986	\$ 3,764	\$ 3,918
Fire Fighting (Township Only)	1,089	2,154	1,423	5,694
Library (Township Only)	4,921	5,000	4,954	5,013
Tuition	90,139	95,275		
Special School	88,646	90,827		
Recreation			1,961	972
Total	\$190,156	\$198,242	\$12,102	\$15,597

Taxpayers appearing shall have a right to be heard thereon. After the tax levies have been determined and presented to the county auditor not later than two days prior to the second Monday in September, and the levy fixed by the county tax adjustment board, or on their failure so to do, by the county auditor, ten or more taxpayers feeling themselves aggrieved by such levies, may appeal to the state board of tax commissioners for further and final hearing thereon by filing a petition with the county auditor on or before the fourth Monday of September or on or before the tenth day after publication by the county auditor of tax rates charged, whichever date is later, and the state board of tax commissioners will fix a date for hearing in this county.

GLENN OVERMYER, Trustee  
Union Township

Dated August 3, 1965

31-2u

## AT JEFFIRS

YOUR IMPERIAL  
CHRYSLER & PLYMOUTH  
DEALER IN PLYMOUTH

### Extra Special This Week

'62 Falcon Club  
Wagon, 8-passenger, 6 cyl., std. trans., all vinyl interior, like new, inside and out, radio. One of the best buys of the year, anywhere, at . . . \$1095.00

'61 Pontiac Bonneville  
Convertible. A beauty — blue body, white top. \$1395.00

'63 Ford  
9-passenger Station Wagon, one owner, V-8, power steering, power brakes, auto. trans., radio. Real nice for . . . \$1695.00

'63 Ford V-8  
Galaxie "500," 390 cu. in. engine, 2-dr. hdt., std. trans., all vinyl interior, good rubber, radio, other extras. \$1695.00

'63 Ford  
Galaxie 4-dr. sedan, V-8, auto. trans., radio, power steering and brakes. Nice one owner car. \$1495.00

'63 Chevy Corvair  
Monza "900," 2-dr., 4-passenger, rear engine, 4-in-the-floor shift, radio, bucket seats, seat belts, white walls, all white. Like new inside and out. Latest book values this car at \$1495. Our price . . . \$1395.00

'63 Chrysler Newport  
4-dr. sedan, V-8, auto. trans., power steering and brakes, radio, other extras, one owner. A beauty for . . . \$1795.00

'63 Studebaker Lark  
Sun top, 4-dr. Wagon, V-8, overdrive trans., radio. Sharp! \$1395.00

'63 Rambler Classic  
"550," 4-dr. sedan, 6 cyl., auto. trans. A nice car . . . \$1095.00

'62 Chrysler Newport  
4-dr. sedan, radio, heater, auto. trans., power steering, other extras. Very nice. NOW REDUCED TO . . . \$1495.00

'62 Pontiac 4-dr.  
Sedan new paint, new rebuilt engine. Very nice car. \$1395.00

'62 Pontiac  
4-dr. sedan, power steering and brakes, radio, auto trans. for \$1595.00

'61 Pontiac Catalina  
4-dr. hdt., very clean, power steering and brakes, auto. trans., radio. \$1295.00

'59 Mercury 4-dr.  
Hardtop. Very nice car for . . . \$595.00

'59 Ford Fairlane  
2-dr. hdt. Very nice for . . . \$645.00

### TRANSPORTATION CARS

'61 Plymouth  
6 cyl., std. trans., 4-dr. Station Wagon. \$345.00

'56 Pontiac  
4-dr. sedan. \$95.00

BANK RATE FINANCING  
WITH CREDIT LIFE  
INCLUDED

**Jeffirs Motor  
Company, Inc.**

EDMUND JEFFIRS  
MICHAEL JEFFIRS  
PLYMOUTH  
1601 W. Jefferson St.  
Phone 936-2331

31n

the  
**Bible**  
speaks to you

CHRISTIAN SCIENCE  
RADIO SERIES

SUNDAYS

8:00 a.m. WLS (890)  
9:15 a.m. WSBT (960)

## PROFESSIONAL DIRECTORY

### PHYSICIANS

JOSEPH D. HOWARD, M.D.  
PHYSICIAN

M. GEORGE ROSERO, M.D.  
PHYSICIAN & SURGEON

General Medicine & Obstetrics  
Office: 921 Lake Shore Drive  
Office Hours by Appointment  
Mon.: 10-12 A.M., 3-7 P.M.  
Tues., Wed., Thurs. & Fri.:  
10-12 A.M., 2-6 P.M.  
Sat.: 9 A.M. - 1 P.M.  
Office & Residence Phone  
Viking 2-3550

### OSTEOPATHIC MEDICAL PHYSICIANS

CULVER CLINIC  
222 N. OHIO ST.  
PHONE VI 2-3351

E. D. POWERS, D.O.  
General Family Practice  
Obstetrics and Rectal Diseases  
Residence Phone VI 2-2710

G. W. STEVENSON, JR., D.O.  
General Family Practice  
and Obstetrics  
Residence Phone VI 2-3577

D. R. MENGEL, D.O.  
Pediatrics  
(Practice limited to infants  
and children to age 14)

Office Hours by Appointment

### DENTISTS

TROY L. BABCOCK, D.D.S.  
DENTIST

Office Hours by Appointment  
Phone Viking 2-2463  
2388 East Shore Drive

JOHN W. OLDHAM, D.D.S.  
DENTIST

Office Hours by Appointment  
Phone Viking 2-2118  
Northern Indiana Public Service  
Company Building

### OPTOMETRISTS

DR. F. L. BABCOCK  
OPTOMETRIST

Phone Viking 2-3372  
Office Hours:  
9 a.m. to 5 p.m.  
Closed Wednesdays  
203 South Main Street

### COMPLETE Optical Service

Eyes Examined

### OPTOMETRIST

GLASSES

CONTACT LENSES

Acousticon Hearing Aid  
Glasses

DR. HERSCHELL R. COIL

102 W. Main - SYRACUSE

Call 457-3712 for Appointment

### PODIATRIST

RICHARD J. DIETER, D.S.C.  
Foot Orthopedics

Surgical Chiropody and  
FOOT SPECIALIST

Thursdays by Appointment  
222 North Ohio St.  
Phone Viking 2-3350

# CHURCH NEWS



**TEMPLE OF FAITH MISSION**  
Rev. B. R. Cross, Pastor  
Located west of State Road 35  
on State Road 10 to California  
Township School and one mile  
north.

Sunday School 9:30 a.m.  
Morning Service 10:30 a.m.  
Song Service 7:00 p.m.  
Evening Service 7:30 p.m.  
Fourth Sunday evening of each  
month there will be a full evening  
of spiritual singing and special  
music with vocal and instrument-  
tal numbers.

To those who do not attend  
elsewhere, we welcome you.

## METHODIST GROUP MINISTRY

(A fellowship of Methodist  
Churches in the area south and  
east of Lake Maxinkuckee.)

### FULTON COUNTY PARISH

**NORRIS L. KING, Pastor**  
**LEITERS FORD METHODIST**  
Robert Lancaster, Superintendent  
Church School at 10 a.m.  
Worship at 11:15 a.m.

**MONTEREY METHODIST**  
John Ringen, Superintendent  
Worship at 9:15 a.m.  
Church School at 10:05 a.m.

**DELONG METHODIST**  
Elizabeth Hoover, Superintendent  
Church School at 9:15 a.m.  
Worship at 10:15 a.m.

### CULVER CIRCUIT

Rev. O. Leon Stark, Pastor  
**MAXINKUCKEE METHODIST**  
Worship at 9:30 a.m. every  
Sunday.

Church School at 10:15 a.m.  
**MT. HOPE METHODIST**  
Paul E. Winn, Superintendent  
Church School at 10 a.m.  
Worship at 11 a.m. every 2nd  
and 4th Sunday.

**SANTA ANNA METHODIST**  
Phillip Peer, Superintendent  
Church School at 10 a.m.  
Worship at 11 a.m. every 1st  
and 3rd Sunday.

### POPLAR GROVE CHARGE

W. Ray Kuhn, Pastor  
William Lake, Superintendent  
Church School at 10 a.m.  
Worship at 10:45 each Sunday.

### SAND HILL CIRCUIT

**SAND HILL METHODIST**  
Russell Good, Pastor  
Glen Hart, Superintendent  
Church School at 10 a.m.  
Worship at 11 a.m. on 1st and  
3rd Sundays.

### GILEAD METHODIST

Grover Shaffer, Superintendent  
Church School at 10 a.m.  
Worship at 11 a.m. on 2nd and  
4th Sundays.

### RICHLAND CENTER

#### CIRCUIT

**RICHLAND CENTER  
METHODIST**  
Edward Miller, Pastor

Herbert Warner, Superintendent  
Sunday School at 9:30 a.m. on  
1st and 3rd Sundays. (10:30 on  
2nd and 4th Sundays).

Worship at 9:30 a.m. on 2nd  
and 4th Sundays. (10:45 on 1st  
and 3rd Sundays).  
M.Y.F. at 7:00 p.m.  
Prayer and Bible Study on  
Thursday at 8:00 p.m.

### BURTON METHODIST

William Belcher, Superintendent  
Sunday School at 9:30 a.m. on  
2nd and 4th Sundays. (10:30 on  
1st and 3rd).

Worship at 9:30 a.m. on 1st  
and 3rd Sundays. (10:45 on 2nd  
and 4th Sundays).  
M.Y.F. at 7:00 p.m.  
Evening Worship at 7:30 on  
2nd and 4th Sundays.  
Prayer and Bible Study on  
Wednesdays at 8 p.m.

**PRETTY LAKE EVANGELICAL  
UNITED BRETHREN CHURCH**  
Thomas Rough, Pastor

Frank Blair Jr., Superintendent  
Morning Worship 9:15 a.m.  
Sunday School 10:00 a.m.  
Evening Worship 7:00 p.m. on  
alternate Sundays.  
Prayer meeting 7:00 p.m. Wed-  
nesday.

### SAINT ANN'S CATHOLIC CHURCH, MONTEREY

Rev. Edward Matuszak, Pastor  
Sunday Masses: 7:30 and 9:30  
a.m.

Weekday Masses: 8:05 (Win-  
ter) 7:00 (Summer).  
Holy day of Obligation: 6:30  
a.m. Evening as announced on  
Parish bulletin.

Holy Communion distributed  
each weekday at 7:00.  
Confession: Saturday 4 to 5  
p.m. and 7 to 9 p.m. Before Sun-  
day Masses.

### ROLLINS CHAPEL

Rev. Lewis Carter  
Afternoon Worship 2:30 p.m.

### BURR OAK CHURCH OF GOD

R. Warren Sorenson, Pastor  
Burton Feece, Superintendent  
Phil Carlisle, Ass't. Supt.  
Sunday School 9:45 a.m.  
Worship Service 10:45 a.m.  
Evening Study Hour 7:30 p.m.  
Holy Communion observed the  
first Sunday of each month dur-  
ing the morning worship service.  
A cordial welcome is extended  
to all to worship with us.

### CULVER METHODIST CHURCH

School-Lewis Streets  
Carl Q. Baker, Minister  
Mrs. Ted Strang, Director  
Christian Education  
9:30 a.m.—Church School  
10:40 a.m.—Morning Worship  
4:30 p.m.—Junior MYF (1st  
and 3rd Sundays)  
5:30 p.m.—Senior MYF (2nd  
and 4th Sundays)

### CULVER BIBLE CHURCH

718 South Main Street  
Rev. Eric Ryser, Pastor  
Sunday School 10:00 a.m.  
Classes for all ages.  
Morning Worship, 11:00 a.m.  
Training Hour 6:30 p.m.  
Evening Service 7:30 p.m.  
Nursery available for all Sun-  
day services.  
Prayer Meeting and Bible Study  
7:30 p.m. Wednesday.

### TRINITY LUTHERAN CHURCH

City Library (Culver)  
R. J. Mueller, B.D., Pastor  
(Phone: Rochester: CA 3-5624)  
Worship Services every Sunday  
at 9:00 a.m.  
Sunday School at 10:00 a.m.  
Children's Confirmation Class  
at 5 p.m. Fridays.  
Communion on last Sunday of  
the month.

### ST. MARY'S OF THE LAKE CATHOLIC CHURCH

"The Church With The  
Gold Crosses"  
Rev. Joseph A. Lenk, Pastor  
Sunday Mass 7:00 a.m., 8:00  
a.m., 10:00 a.m. and 11:00 a.m.  
Daily Mass 9:00 a.m.  
Confession Saturday 7:00 a.m.  
to 9:00 p.m.  
Confession Saturday 7:00 p.m.

### ZION GOSPEL CHAPEL

Rev. Jerry M. Browning, Minister  
Marion Kline, Superintendent  
Dwight Kline, Class Leader  
Manson Leap, Lay Leader  
Sunday School 9:30 a.m.  
Preaching Service 10:45 a.m.  
Evening Worship 8 p.m., every  
4th Sunday of the month.  
Prayer Meeting Thursday 8:00  
p.m.  
Everyone Welcome.

### TRINITY EVANGELICAL UNITED BRETHREN CHURCH

Rev. Robert Berkey, Minister  
Raymond Morrison, Supt.  
Sunday School 10:00 a.m.  
Morning Worship 11:00 a.m.  
Evening Worship 7:30 p.m. on  
alternate Sundays.  
Choir Practice 6:30 p.m. Thurs-  
day.  
Prayer Meeting 7:30 p.m.  
Thursday.

### CULVER LARGER PARISH E.U.B. CHURCHES

Rev. Dwight McClure, Pastor  
Joseph Haney, Assistant Pastor  
**EMMANUEL EVANGELICAL  
UNITED BRETHREN CHURCH**  
Eugene Thomas, Superintendent  
Sunday School 9:30 a.m.  
Morning Worship 10:30 a.m.  
Evening Worship 7:30 p.m.  
**HIBBARD E.U.B. CHURCH**  
Coleman Lowry, Superintendent  
Sunday School 9:45 a.m.  
Morning Worship 10:30 a.m.  
**BURR OAK E.U.B. CHURCH**  
Russell Ulery, Superintendent  
Morning Worship 9:00 a.m.  
Sunday School 10:00 a.m.

### CULVER MILITARY ACADEMY MEMORIAL CHAPEL

Chaplain Allen F. Bray, USNR  
Holy Communion — 8 a.m.  
Service for Woodcrafters —  
10 a.m.

Service for Troopers, Midship-  
men, and Girls' School — 11 a.m.

### ST. THOMAS' EPISCOPAL

Center and Adams Sts., Plymouth  
Father William C. R. Sheridan,  
Pastor

Summer Schedule  
7:00 a.m. Holy Eucharist.  
9:00 a.m. Family Eucharist.  
9:00 a.m. Parish Nursery.

### GRACE UNITED CHURCH

Rev. H. W. Hohman, Pastor  
Music  
Mrs. Robert T. Rust  
Margaret Swanson  
Sunday School 9:30 a.m.

### FIRST CHURCH OF CHRIST SCIENTIST

428 S. Michigan St., Plymouth  
Morning Worship 10:30 a.m.  
Evening Worship Wednesday  
7:45 p.m.

Reading Room open in Church  
Edifice 2 to 5 - Wed. and Sat.

The protecting influence of God  
in the life of the Apostle Paul will  
be brought out in the Bible lesson  
at Christian Science church ser-  
vices this Sunday. The subject is  
"Spirit" and the responsive read-  
ing will include this statement  
from Paul's first letter to the  
corinthians: "The manifestation  
of the Spirit is given to every man

The Culver Citizen — Culver, Indiana — Aug. 5, 1965 — Page 13

to profit withal."

A central theme of the service  
will be presented in these lines  
from the Christian Science text-  
book: "The history of Christianity  
furnishes sublime proofs of the  
supporting influence and protect-  
ing power bestowed on man by  
his heavenly Father, omnipotent  
Mind, who gives man faith and  
understanding whereby to defend  
himself, not only from temptation,  
but from bodily suffering" (Sci-  
ence and Health with Key to the  
Scriptures by Mary Baker Eddy,  
p. 387).

### UNION CHURCH OF THE BRETHREN

State Road 17  
Leo Van Scoyk, Interim Pastor  
Joe Heiser, Superintendent  
Sunday School 9:30 a.m.  
Morning Worship 10:30 a.m.

### SEVENTH DAY ADVENTIST

M. G. Johnson, Pastor  
631 Thayer St., Plymouth  
Worship Service 9:30 a.m.  
Sabbath School 10:30 a.m.

**FIRE DEPARTMENT** call  
should be made to Viking 2-2121.  
Note this number near your home  
phone.

# THREE CHEERS



Here comes the winner! Can he hold that first  
place position, or will he fail? In the eyes of these  
youngsters, victory is the most important thing in the  
world. *Everything* hinges on the outcome of this con-  
test!

Enthusiasm is part of successful living, stimulating  
the imagination, and inspiring the mind. It is contagious,  
too, and can affect co-workers, friends, families. It is  
essential to organizations as well as to individuals.

Through the centuries a rich spiritual enthusiasm  
has been handed down by the Church, one of the greatest  
institutions on earth. Its members, working together,  
fired by the enthusiasm of faith, can give you renewed  
inspiration, and strength.

Why not attend church next Sunday? Become a part  
of this great fellowship of believers! You, too, can be  
a winner.

Copyright 1965 Keister Advertising Service, Inc., Strasburg, Va.

### THE CHURCH FOR ALL ALL FOR THE CHURCH

The Church is the greatest fac-  
tor on earth for the building of  
character and good citizenship.  
It is a storehouse of spiritual val-  
ues. Without a strong Church,  
neither democracy nor civiliza-  
tion can survive. There are four  
sound reasons why every person  
should attend services regularly  
and support the Church. They  
are: (1) For his own sake, (2)  
For his children's sake, (3) For  
the sake of his community and  
nation, (4) For the sake of the  
Church itself, which needs his  
moral and material support.  
Plan to go to church regularly  
and read your Bible daily.



Sunday	Monday	Tuesday	Wednesday	Thursday	Friday	Saturday
Genesis 32:22-32	Chronicles 29:6-9	Chronicles 29:10-19	Corinthians 9:19-27	II Corinthians 2:12-17	James 2:14-26	I John 5:1-5

### The Country Store

Shop By Boat Or Car  
Open 8 A.M. to 8 P.M.

Viking 2-2319

Culver, Ind.

### The State Exchange Bank

Member FDIC

Culver, Ind.

### Hawthorn-Mellody Ice Cream and Milk

Plymouth, Ind.

Phone 936-2161

### Park 'N Shop Super Market

Phone Viking 2-2450

207 E. Jefferson

Culver, Ind.

### Photo Supplies

Newspapers  
Greeting Cards  
Fannie May Candy

### Culver News Agency

108 S. Main St.  
Culver, Ind.

### Gates & Calhoun Chevrolet, Inc.

Complete Automotive Service

### East Jefferson

Viking 2-3000

Culver, Ind.

### Walter Price's Abattoir

Wholesale & Retail Meats

1/4 Mile South of Plymouth  
on Muckshaw Road

### House of Maple and

Cook Bros. Furniture

Plymouth, Ind.

### Miller's Dairy

Have your milk delivered  
to your home

Phone Viking 2-3090

Culver, Ind.

### Transit Mix, Inc.

Plymouth and Knox

Willard Lawrence

Phone 936-2136

### Thermogas

Bulk and Bottle Gas  
For  
Home - Farm - Industry

Phone 936-2725

Plymouth, Ind.

### Isobel's Beauty Shop

Culver - VI 2-3013

Argos - 894-5613

Open Monday through Saturday

# CLASSIFIED ADS



## Culver's Four-County Trading Area's Recognized Market Place

RATES: Up to 25 words, \$1.00; 2 weeks, \$1.80; 3 weeks, \$2.40; 4 weeks, \$2.80. Up to 50 words, \$2.00; 2 weeks, \$3.60; 3 weeks, \$4.80; 4 weeks, \$5.60. Additional words 4c each. Minimum charge \$1.00.  
 RATES quoted are for cash with order; add 50c if charged. Service charge of \$1 for blind ads in care of The Citizen. Classified display, \$1 per inch. Card of Thanks, In Memoriams, and Obituaries, \$1.50. Front page reading notices, up to 25 words, \$7.50. Local display advertising rate 70c per column inch. Ads accepted until 9 a.m. Wednesday, day of publication.

### NOTICES

WE WILL BE CLOSED for vacation Aug. 8 through Aug. 15. Ideal Cleaners. 31n

### SERVICES OFFERED

**ALL KINDS OF  
JOB PRINTING**  
THE CULVER PRESS

**Moving?**  
Call Knox  
772-2055  
**Riteway Moving  
& Storage**  
REASONABLE RATES  
tfn

**HUDON TYPEWRITER SERVICE**, 103 W. LaPorte Street, Plymouth. Sales-Service-Rentals. Typewriters and Adding Machines. Repairs on all makes. Royal Portable dealer. Phone 936-2728. 33tfn

**ADDIE'S PIE SHOP**  
119 E. LaPorte St.—Plymouth  
Featuring Home Style Baked Goods  
FRESH DAILY  
Pies — Cakes — Cookies  
Breakfast & Dinner Rolls  
Doughnuts  
Complete Line Of Delicatessen Foods  
Phone 936-3867 2tfn

**FELKE FLORIST**  
Plymouth  
Cut Flowers and Potted Plants Of All Kinds  
Funeral Work A Specialty  
We are as close as your phone  
936-3163 COLLECT 15tfn

**ABSTRACTS OF TITLE** to Real Estate in Marshall County by **LACKEY AND MURPHY**, Phone 936-2226 or 936-4421. 22tt\*

**FLOOR COVERING**  
Armstrong Tile Installed  
Also Linoleum in 6' & 12' widths  
Plastic & Ceramic Wall Tile  
**HOLLAND'S HARDWARE**  
Argos — Phone 892-5158 31-3n

**SCHWINN BICYCLES**  
Sales - Parts - Service  
New & Used Schwinn Bikes  
Bicycle Repair  
**ARTS BIKE & SAW SHOP**  
709 W. Adams — Plymouth  
Open Evenings 20tfn

**LIMESTONE DRIVEWAYS** — \$4.30 ton spread. Also gravel, top dirt, fill. Agricultural limestone, A.S.C.P. approved \$4.50 ton spread. Also backhoe work, excavating, filter beds, etc. George Hopple Trucking. Viking 2-2514. 11-4\*1fn

**Furniture & Wood Products**  
Made to order  
Antique Restoration  
Furniture Refinishing  
**DEVOE BERKEHEISER**  
Argos, Ind. 892-5584 26tfn

**SILOS & SILO REPAIRS** — Roofs, chutes, banding, inner-coats. UNLOADERS, SCREW FEEDERS, STORMOR bins (drying or storage). Batch dryers. Grain augers, aerators. **CHESTER C. DIETERT**, NORTH JUDSON, IND. 20-22\*

**BILL STOKES SEWING MACHINE REPAIR**, Service for all makes. For free check over call Argos 892-5012 26tt\*

**CONCRETE SEPTIC TANKS** \$50 and up. Grease traps and distributions tanks. Shirar Brothers, 1203 Chester St., near Cemetery, Plymouth, Ind. Phone 936-3410. 10-52\*

### WANTED TO BUY

**WANTED TO BUY:** Standing saw timber, 10 acres or more, cash paid. W. C. Slusher, 216 Winfield St., Culver, Ind. Viking 2-2267. 26-7n

### WORK WANTED

**WANTED:** Baby sitting in my home by day or week. Mrs. Sharon Mahler, West 19th Road, Culver, Viking 2-2263. 30-2\*

**WANTED:** Farm buildings to paint, brush painting only. Reasonable rates. Call Norman Johnson, Viking 2-2061. 31tfn

### HELP WANTED

**Wanted — Truck Tractor Owner Drivers** - Minimum age 25 years. 3 years semi-trailer experience, cab forward or conventional tractors, sleeper berth equipped, preferable tandems. Air brakes, 10x20 tires. Contact R. O. Smith, Darling Freight, Inc., 4000 S. Division Ave., Grand Rapids, Mich., phone daytimes, LE 4-5459; Evenings LE 4-8247. 31n

**McGILL MANUFACTURING COMPANY, INC.**  
has openings for  
Men and Women in

**PRODUCTION MACHINE WORK, TOOL & DIE, INSPECTION, and ASSEMBLY**

**Paid Vacations, Group Insurance, including Major Medical Coverage, Life Insurance, Paid Holidays & Retirement Plan**

Apply

Personnel Department  
909 North Lafayette Street  
Valparaiso, Indiana

An Equal Opportunity Employer 31-4n

### FOR SALE MISC

**VACATIONERS, TRAVELERS:** Mark the front bumper of your car with the name of your hometown of Culver. Beautiful regulation-size metal plates in attractive blue background, with Culver and Indiana printed in bright orange. Just \$1.00 each, plus tax. Available at The Citizen Office. 30tfn

**SAVE YOUR EVERGREENS. KILL ALL THOSE PLANT INSECT PESTS WITH MALATHION!** Zeehler Farm Service, 600 West Jefferson St., Culver, Ind. 30-3n

**BLUEBERRIES:** Thompson's, formerly Skinner's, 1 1/2 mile south of Plymouth on Muckshaw Road. You pick, 20¢ pound. Phone 936-7710 or 936-4790. 30-4\*

**FOR SALE:** Used Paasche model PBOA portable air Compressor with 3/4 hp, 110 volt, 60 cycle, 1 phase motor. Cost \$245 new. Asking \$125 for this 6 year old unit. Used very little. The Culver Press, Press Building, Culver, Phone VI 2-3277. 30tfn\*

### FARM EQUIPMENT

**JOHN DEERE**  
"Quality Farm Equipment"  
**PLYMOUTH FARM SUPPLY**  
Bargains — New & Used 36tfn

**FOR SALE:** One 1957 Ford ball-

## APPLIANCES FOR SALE

**WESTINGHOUSE APPLIANCES**  
TV's \$119.00  
Top Load Washer wt. \$229.00 (15 lbs.)  
Dishwasher \$179.00  
Air Conditioners \$113.00 (& up)  
For anything in the appliance line, come to the  
**CULVER HARDWARE**  
your local  
**WESTINGHOUSE Dealer** 31n

## LIVESTOCK FOR SALE

**Angus Registered Cattle** — Elie-mere breeding, 60 cows, calves by side, 40 - 1 and 2 year old heifers, also feeder steers. Can be seen evenings or weekends. Al Olin, Lowell, Mich. Ph. TW 7-7277. 31n

## BOATS FOR SALE

**West Shore Boat Service**  
\* Sales \* Service \* Storage  
\* Rentals \* Gas & Oil \* Launching  
— Mercury Motors —  
Crosby and Lone Star Boats  
— All Marine Supplies —  
588 West Shore Drive, Culver  
Phone Viking 2-2100 tfn

## AUTOMOBILES

**PUBLIC SALE** of a 1958 Ford Wagon, Aug. 13, 1965, at Gates & Calhoun Chevrolet, Culver, Ind., where car may be inspected prior to sale. We reserve the right to bid. General Motors Acceptance Corp., South Bend, Ind. Account No. 712 83762. 31n

## PRODUCE FOR SALE

**U-PICK BLUEBERRIES:** Please call for appointment, Viking 2-2684, 810 West Shore Drive. 29tfn

**FOR SALE:** Melons, tomatoes, cabbage, peppers. Ann's Market, 1 1/2 mile west of 17 on Road 8. Phone Viking 2-2374. 31-4\*

## REAL ESTATE FOR SALE

**REAL ESTATE**  
see  
**C. W. EPLEY REALTY**  
Lake Residential  
**CITY LAKE FARM**  
Real Estate is Our Business  
We Have No Other  
**BUYING or SELLING**  
**REAL ESTATE**  
Call  
**MARY BELLE KEMPLE**  
Salesman  
Smith & Downs, Realtors  
**COMMERCIAL RENTALS**  
Ph. VI 2-3053 14tfn

**Business** To Buy or Sell  
**REAL ESTATE**  
Call  
Dale or Rebecca Jones, Salesmen  
Chipman, Jenkins & Chipman,  
Brokers  
Phone VI 2-3128  
**Residential** Farm  
1-26\* tfn

"Call Me, I Like To Be Bothered"  
Mary Belle Kemple  
Sales Representative For  
Smith & Downs, Realtors  
Viking 2-3053 27tfn

**FOR SALE:** 3-bedroom, 2 baths, living room, dining room, full basement, garage. Excellent location. Priced for a **QUICK CASH SALE**. C. W. Epley Realty. 25tfn

## FOR RENT

**FOR RENT:** Five-room house, unfurnished, conveniently located in Culver. Call Viking 2-2774. 30tfn

**FOR RENT:** Guest house, modern, completely furnished, by week or month during Summer. Lake privileges. Also available September through May. Inquire 810 West Shore Drive, Culver. 19tfn

**FOR RENT:** Four-room furnished apartment, complete with utilities. Adults preferred. Phone VI 2-2371. 31tfn

**FOR RENT:** Six-room house and bath. Oil heat. 217 S. Main St., Culver. Phone VI 2-2244 or VI 2-2629. 31-4n

## APARTMENTS FOR RENT

**FOR RENT:** Newly decorated furnished apartment; sleeping rooms. 617 Pearl St., Viking 2-3442. 14tfn

**FOR RENT:** 2-bedroom apartment with air conditioner, down town, furnished. Phone Viking 2-2515. 20tfn

**FOR RENT:** Light airy apartments, oil heat, hot water, electric stove and refrigerator. Furnished. Viking 2-3021. 26tfn

## LOST AND FOUND

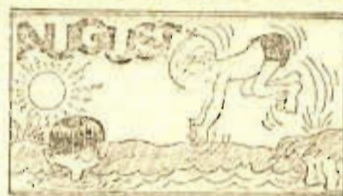
**LOST:** Blue, Skylark Sailboat from South Shore mooring. Notify Culver Boat House. 31\*

**FOUND:** Tuesday, Aug. 3, in vicinity of Lake Street in Culver, one set of five keys in brown leather container. Owner may claim same by calling at The Citizen office and paying for this ad. 31nc

## BUSINESS OPPORTUNITIES

**Hotel and Motel** — 30 furnished rooms, now in operation with good income. Priced below a good home, \$26,000, terms. Retiring, reason for low price. Write Box 93, Houghton Lake Heights, Mich. 48630. Phone 422-5042. 31n

**AAA All Brick Motel** — 15 units and home. Steady, all year business. Very good commercial trade. Available now. Write Box 126, Manistique, Mich. or phone 341-5191. 31n



## THE WEATHER

Tuesday	84	60
Wednesday	78	57
Thursday	73	54
Friday	80	52
Saturday	77	62
Sunday	64	58
Monday	66	52
Tuesday		52



By Mary Whitman

The world of animals fascinates children.

A child loves their diversity. A giraffe's neck, a cat's claws, an elephant's trunk, a lamb's wool or a bird's wingspread all bring up questions and encourage close observational powers.

Books about animal life are a sure way of beginning a conversation with a youngster. Because children take nothing for granted, many will want to know how horses get their shoes on, whether dinosaurs are still around, or where fireflies go in winter. All the answers aren't easy to find.

It helps to have a world library series on hand. Encyclopedias are useful too. The local library is an aid. A trip to a zoo or farm is a worthwhile outing. Museums of natural history are another source of wonder to children.

"Most youngsters enjoy bright and simple reference works about animals," according to Robert Haumersen of Whitman Publishing Company of Racine, Wisconsin. "Some of the most popular non-fiction books are those about animals of the jungle, reptiles since the world began, birds everywhere, and the sea and its creatures."

Young children love fiction about animals as well. Forever in favor are the stories of Peter Rabbit and the Three Little Pigs. Older children prefer Black Beauty and other animal classics.

A child of school age who becomes interested in animals likes to try out art and hobby projects. He may want to make clay models of animals. Plastic action toys make a good framework or armature for his sculpture. An activity book of scissor shapes enables the grade-schooler to make stand-up animals. Some of these projects, started for fun, can earn extra credit at school.

No child has to be urged to study animals. Just count on natural awe and admiration. After all, animals of one kind or another can climb trees, dive undersea, tunnel under fences, turn invisible. All these feats are highly rated by the sneaker set. A animal lore is a treasure subject.

# Suggestions for WANT ADS

## SELL

- Automobiles
- Clothing
- Chairs
- Pianos
- Tables
- Cattle
- Vehicles
- Bicycles
- Fruits
- Trucks
- Radios
- Implements
- Vegetables
- Boats
- Poultry
- Fancy Work
- Plants
- Antiques
- Watches
- Hay and Feed
- Canaries
- Farms
- Embroidery
- Baby Carriages
- Dogs
- Stoves
- Beds
- Rugs
- Fuel

## BUY

- Feed
- Furniture
- Used Cars
- Lumber
- Bricks
- Washing Machines
- Houses
- Lots
- Guns
- Bookcases
- Sewing Machines
- Golf Clubs
- Fuel
- Batteries
- Tires
- Car Accessories

## HIRE

- Cooks
- Waitresses
- Maids
- Chauffeurs
- Helpers
- Mechanics
- Clerks
- Stenographers
- Salesmen

## RENT

- Rooms
- Store Buildings
- Garages

# THE CULVER CITIZEN

## Burr Oak

By Mrs. Floyd Carrothers  
Phone Viking 2-2058

Mr. and Mrs. Arthur Prosser and Velda were Thursday evening guests of Mr. and Mrs. Tony Warner and sons in South Bend. Velda stayed over until Sunday in the Warner home.

Mr. and Mrs. Floyd Carrothers were Sunday guests of Mr. and Mrs. T. J. Piper at Plymouth. Other guests were Mr. and Mrs. William Crossgrove and Cynthia Lynn of Plymouth.

Mr. and Mrs. Arthur Prosser spent the weekend visiting their children Mr. and Mrs. John Mattiya and family at Markham, Ill., Mr. and Mrs. Cecil Guess and daughters, Mr. and Mrs. Sam Prosser and daughter at Berwyn, Ill., and Mr. and Mrs. Charles Garrett and Tami Ray at Gary.

Mr. and Mrs. Kline Bossinger spent Saturday in Hammond and Mr. Bossinger attended the Inland Steel 25-year annual club outing at East Chicago. Mrs. Alfred Brosman entertained some of the ladies, Mrs. Sherman Chenore, Mrs. Kline Bossinger, and Mrs. Albert Brosman.

Mrs. Floyd Carrothers visited Mr. and Mrs. Jack Thomas and Betty at Plymouth Monday afternoon. Other guests were Mrs. Leonard Fish, Melody and Dorene, and Loren Reese of LaPaz, and Tom Morrisson of Plymouth.

Sunday guests of Mr. and Mrs. Harry Sheppard were Mr. and Mrs. Ronald Loess and Kari Lyn of Bellwood, Ill.

Sunday evening dinner guests of Mr. and Mrs. Lloyd Maxson were Mr. and Mrs. Ray Kuchel and Ronald of Teegarden.

Mr. and Mrs. Glenn Brodbelt and Terry of Plymouth were Sunday guests of Mr. and Mrs. Bert Cramer Sr.

Mrs. Lawrence Harper of Michigan City was the weekend guest of her sister, Mrs. Rossie Moore.

Sunday guests of Mrs. Rossie Moore were Mr. and Mrs. Virgil Bennett, Eddie, Linda and Virgil Jr. LaPorte. Linda stayed over for a week's visit with her grandmother.

## Poplar Grove

By Mrs. Carroll Thompson  
Phone Argos TWineaks 2-5022  
Attendance at Sunday services was 65.

Mr. and Mrs. Glen Quivey and Lois of Wabash spent Saturday with Mr. and Mrs. Leslie Mahler. Miss Lois remained to spend the week with relatives here and to attend the 4-H Fair at Argos.

Mrs. Leslie Mahler, Mrs. O. C. Gibbons, and Mrs. Allen Dennie were among those who accompanied the What Not Home Demonstration Club of Fulton County to Chicago on Wednesday. Among the activities were a tour of the Avon plant, shopping, and a boat ride on the Chicago River and Lake Michigan.

Mr. and Mrs. Allen Dennie and Stuart spent Sunday at Speedway where they visited Mr. and Mrs. Tim Yarling and family and Mrs. Jessie Yarling.

Mr. and Mrs. Richard Hagan and family and Mr. and Mrs. Maurice Hagan and family of Marion camped at Tippecanoe River State Park near Winamac over the weekend. Sunday evening guests of the Richard Hagans were Don Wynn and Linda Holston of Goshen.

Mr. and Mrs. Richard Hagan entertained the Wolf Creek Fish and Game Club Monday evening.

Thursday evening callers in the Herbert Blocker home were Mr. and Mrs. Dwayne Evans and Mr. and Mrs. Bruce Evans of Sacramento, Calif. Sunday evening visitors were Mr. and Mrs. John Winterrowd and family.

Guests entertained at a party in the Herbert Blocker home on Wednesday afternoon were April Warner, Denise Berkheiser, Greg and Tim Hagan, Loralie and Maurine Thompson, and Brian Clark. A hay ride, games and refreshments were enjoyed.



Imprint Style HL

## Sale

SAVE \$2.51  
DURING AUGUST

**Rytex Flight  
Personalized  
Stationery**

DOUBLE QUANTITY

**\$4.99**

plus tax  
(Regularly \$7.50)

- 200 single sheets
- 100 envelopes . . . or
- 100 double sheets
- 100 envelopes . . . or
- 100 monarch sheets
- 100 envelopes

Changing your name or address? Going back to school? Need to buy someone a truly personal gift? Then why not buy Rytx Flight during this special sale. It's ideal for all letter-writing or gift-giving occasions. During this special sale you get a wonderful value.

It's a just right weight for air mail or regular mail. Fine quality paper in white or blue with festive red or azure blue envelope linings. Personalized in choice of styles shown. Imprinted in blue ink.

Remember . . . it's never too late to send Rytx with our handsome Rytx Gift Announcement to tell them it's on the way.

**THE CULVER  
PRESS, INC.**

Press Bldg. — CULVER

Jay Thompson is a participant on the Educational Youth Tour to Washington, D.C. this week.

Mrs. John F. Edgell, Mrs. C. Glenn Coolman, and Mrs. Kenneth K. Kramling entertained with a delightful brunch from 11 to 12:30 o'clock last Wednesday noon, July 28, in the home of Mrs. Edgell at 865 East Shore Drive. Guests included many of the summer residents, Lake residents, and townspeople and their out-of-town guests.

## MANOR MARKET

Groceries  
Beverages - Meat

Maxinkuckee Landing  
Phone Viking 2-2608

Sinclair  
Gasoline and Oil

## Notice To Taxpayers

OF ADDITIONAL  
APPROPRIATIONS

Notice is hereby given the taxpayers of Culver Community Schools, Marshall County, Indiana, that the proper legal officers of said municipality at their regular meeting place on 26th day of August, 1965, will consider the following additional appropriations which said officers consider necessary to meet the extraordinary emergency existing at this time.

### Special School Fund:

B-5: Clerical Service \$1,000  
B-9: Other Instructional Costs 250  
F-5: Social Security 80  
H-6: Interest on Temporary Loans 1,425  
I-2: New Equipment 625

### Tuition Fund:

F-3: Legal Transfers 9,000

Taxpayers appearing at such meeting shall have a right to be heard thereon. The additional appropriation as finally made will be automatically referred to the State Board of Tax Commissioners, which Board will hold a further hearing within fifteen days at the County Auditor's office of Marshall County, Indiana, or at such other place as may be designated. At such hearing, taxpayers objecting to any of such additional appropriations may be heard and interested taxpayers may inquire of the County Auditor when and where such hearing will be held.

THOMAS RUSSELL, Secretary  
Office of Taxing Unit

31-2n

## My Neighbors



## Notice Of Hearing

CULVER TOWN PLAN  
COMMISSION

Notice is hereby given that the Culver Town Plan Commission of Culver, Indiana, on August 9, 1965 at 7:30 p.m. EST at the council chambers of the Town Hall of Culver, will hold a public hearing on a proposed amendment to the Zoning Ordinance and Map for the Town of Culver, Indiana, and the contiguous unincorporated territory under the jurisdiction of the Culver Town Plan Commission.

The Proposed amendment, copy of which is on file at the office of the Clerk-Treasurer of Culver, concerns property properly described as follows:

A strip of ground in uniform width seven hundred eighty (780) feet, east and west, out of section twenty (20), township thirty-two (32) north, range one (1) east, Marshall County, Indiana, more particularly described as commencing at the intersection of the center line of Mill Street and the east line of New State Highway No. 17 and extending east seven hundred eighty (780) feet, thence south three thousand two hundred (3,200) feet, thence west seven hundred eighty (780) feet to the east line of New State Highway No. 17, and from thence running north along the east side of New State Highway No. 17 to the place of beginning, containing fifty-five (55) Acres, more or less.

The proposed amendment would make the following change in zoning:

From "S" Suburban and  
"B1" Local Business to  
"M2" Heavy Industrial

Interested persons desiring to present their views upon the Proposed Amendment, either in writing or verbally, will be given the opportunity to be heard at the above mentioned time and place.

THE CULVER TOWN PLAN  
COMMISSION, Culver, Indiana  
ROBERT BERGER, President  
VIRGINIA BAIR, Secretary

30-2n

## FULTON COUNTY COMMUNITY SALE

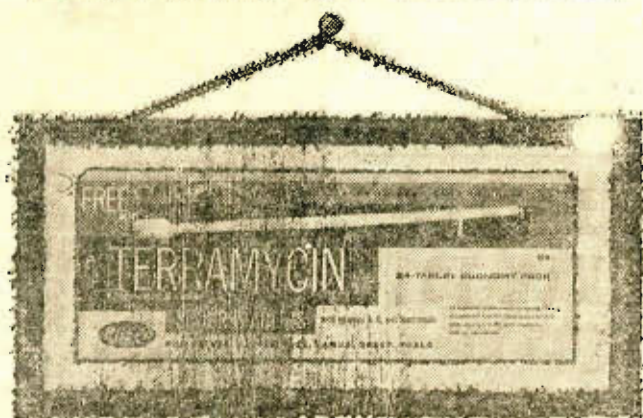
Rochester, Indiana

THESE ARE SOME OF OUR TOP PRICES OF JULY 31:

170-lb. Calf	Verl Shaffer, Rochester	cwt.	33.00
200-lb. Calf	Robert Green, Twelve Mile	cwt.	32.00
Hol. Cow (Springer)	Byron Ginn, Rochester		295.00
Hol. Cow (Springer)	Howard Marlin, Akron		260.00
1550-lb. Bull	Alton Bouse, Claypool	cwt.	20.30
1610-lb. Bull	Clarence Culp, Rochester	cwt.	19.70
1040-lb. Steer	Evers & McNabb, Rochester	cwt.	26.20
1010-lb. Steer	Kline Blacketer Jr., Rochester	cwt.	26.00
905-lb. Steer	Kline Blacketer Jr., Rochester	cwt.	25.20
790-lb. Steer	Doris Herrold, Akron	cwt.	25.10
1130-lb. Hol. Steer	Robert Polen, Rochester	cwt.	22.10
1130-lb. Hol. Steer	Joseph Richardson, Rochester	cwt.	21.30
965-lb. Hol. Steer	Paul Arvin, Rochester	cwt.	21.30
1055-lb. Cow	Burton Bros., Rochester	cwt.	16.50
1265-lb. Cow	David Bradway, Akron	ea.	10.00
20-lb. Pig (White)	David Bradway, Akron	ea.	15.00
34-lb. Pigs (White)	Scheld & Hisey, Rochester	cwt.	15.70
207-lb. Hogs	George Barnett, Rochester	cwt.	24.10
207-lb. Hogs	Samuel Barnes, Akron	cwt.	24.00
420-lb. Sows	Wesley Cheesman, Rochester	cwt.	21.40
552-lb. Sows	Emory Eddington, Kewanna	cwt.	20.10
97-lb. Lambs	Clair Strong, Rochester	cwt.	24.75
90-lb. Lambs	Marvin Roabrig, Bourbon	cwt.	24.25
570-lb. Boar	Charles Borden, Rochester	cwt.	16.10

Corn Schroder & Burdett Garner, Auctioneers Carl Newcomb

## PICTURE OF HEALTH



Combines Terramycin with important vitamins to give calves today's best protection against scours and pneumonia.



**TERRAMYCIN**  
SCOURS TABLETS

AVAILABLE AT

**WILSON COAL & GRAIN CO.**  
Rochester

"As Advertised in the Farm & Home Section"

## The bold new challenge

from **SUPERPICKER**

New Idea challenges any other Cornpicker to pick as clean, as fast, as plug-free as the new Superpickers . . . in any stand of corn.

That's the challenge. Want the facts to back it up? Stop in. Right now we're trading big on Superpickers — pull type and mounted.

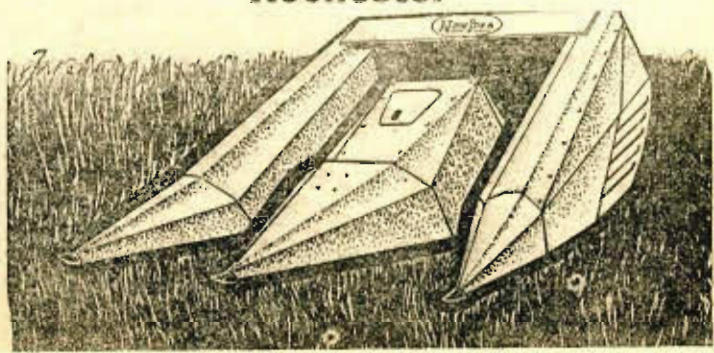
• Big Capacity! • Non-Stop Picking! • Pick'n husk, pick'n shell, pick'n grind . . . switch from one to another in minutes!

SUPERPICKER! On display

"As Advertised in the Farm & Home Section"

**C. HOWARD ROBBINS**  
**FARM IMPLEMENTS**

Rochester



# Junior League Defeats LaPaz By 16-4 Score

By BOB SHIRRELL

Last Friday, July 30, the Culver Junior League finished their season by defeating Lapaz 16-4. This is the tenth win for the Junior League against one loss.

Stu Lowry and Jack Lužas led the Culver hitting by going four for five and scoring twice. Terry Gentry and Steve McCombs each had doubles; Phil White had a triple and Jim Taber had a home

Name	AB	R	H	BA	FA	RBI	SB	EBH
A. Lowry	51	17	26	.510	1.000	22	7	11
Bru. Lindvall	41	15	17	.415	.923	4	6	3
Eustis	33	11	13	.394	.898	8	4	7
Jewell	44	10	16	.364	.688	6	8	2
Wakefield	26	2	9	.345	1.000	3	5	2
Shirrell	50	7	17	.340	.899	11	4	4
S. Lowry	54	16	18	.333	.814	6	0	5
Haines	3	0	1	.333	.500	0	1	0
Lucas	12	3	3	.250	.500	0	1	0
White	4	0	1	.250	1.000	0	1	0
Gentry	54	9	11	.203	.800	7	3	1
Kosterman	39	4	6	.153	.925	3	1	2
McCombs	36	6	4	.111	.892	1	5	1
Bri. Lindvall	26	1	2	.100	.750	2	1	0
Taber	0	0	0	.000	.667			
Team	467	101	146	.313	.875	73	47	38

# Little League Season Nears Half-Way Point

The Culver Jaycees Little League season is rapidly approaching its half-way point with Team 1, coached by Paul Synder, Jr. and Jim Boswell, heading the standings. In second place is Team 4, tutored by Bob McFarland and Paul Liette, followed by Team 2 (Jim Kline and Bill Harris) and Team 3 (Bob and Bruce Lindvall).

The standings including games of Monday August 2, are:

Team	W	L	Games Behind
1	4	1	
4	3	1	1/2
2	1	3	2 1/2
3	1	4	3

The full schedule of activity includes regular league games each Monday through Thursday night. These games are played at the Culver High School diamond and start promptly at 6:30 each evening. In addition to the regular league games, there is a group of league all-stars who play Tuesday mornings at the Culver Military

run. C. Keifer went one for one and drove in one.

Brian Lindvall pitched a fine game and got his second win. Brian struck out seven and allowed only five hits.

Zentz led the Lapaz team by going two for four, doubling and driving in one.

## Team Totals

The Culver High School baseball team ended their season last Monday with a record of nine wins and six defeats. The at bats (AB), runs scored (R), hits (H), batting average (BA), fielding average (FA), runs batted in total (RBI), stolen base total (SB), and the extra base hit total (EBH) are listed below. I think the figures speak for themselves.

Academy. These lads, coached by Norm Baker, play little league teams organized in the Culver Woodcraft Camp.

All in all there is a full schedule of baseball activity for Culver youngsters between the ages of 9 and 12. This program offers a fine opportunity for local baseball fans to see exciting baseball games, so come on out and see the Culver Little League in action.

## ATTENDS BALL STATE ORIENTATION PROGRAM

Judy Ann Price, Culver, was on the Ball State University campus two days last week attending a freshman orientation program and enrolling for fall quarter classes.

Miss Price, daughter of Mr. and Mrs. Roy D. Price, resides at 322 State St., Culver. While attending Culver High School, she was active in pep club, Sunshine Society, and school newspaper and year-book staffs. She plans to major in history and minor in political science.

Sunday guests of Mrs. Hattie Brown were Mr. and Mrs. Paul Conrad and daughter, Rosemary, and Miss Linda McCoy, all of Mansfield, Ohio.

# BOWLING

## MIXED LEAGUE

Standings	W	L
Rustlers	16	8
Snipers	16	8
Ringers	13	11
Sleepers	13	11
Handicappers	13	11
Blazers	12	12
Strikers	8	16
Engineers	5	19

## Week's Results

Rustlers 2, Snipers 2, Ringers 2, Handicappers 2, Blazers 4, Strikers 0, Engineers 3, Sleepers 1.

High Team Series Scratch: Ringers 2058.

High Team Game Scratch: Snipers 746.

High Team Series Handicap: Blazers 2378.

High Team Game Handicap: Snipers 850.

High Couple Series Scratch: M. Dinsmore, W. Dinsmore 1051.

High Couple Series Handicap: N. McKee, L. McKee 1204.

## Individual Scoring

### Ladies

500 Club: Madelyn Dinsmore 181-147-188-516.

450 Club: D. Lucas 463, L. Clifton 480, I. Hyland 475, L. Gunder 477, Midge Dinsmore 487, M. McKee 451, J. Triplet 459, N. McKee 466.

400 Club: S. McDonald 409, B. Rosebaum 430.

175 Club: Madelyn Dinsmore 181-188, L. Clifton 190, L. Gunder 177, J. Triplet 193, Midge Dinsmore 188, M. McKee 178, N. McKee 175.

### Men

550 Club: B. Engle 591, L. McKee 555.

500 Club: W. Dinsmore 535, I. Stubbs 544, A. Schlach 519, J. DeWitt 543, U. Gretter 549, R. Wise 505, R. Gunder 520, A. Triplet 502.

200 Club: B. Engle 221-201, M. Shidler 234, J. DeWitt 215, R. Wise 206, L. McKee 227.

## CHICAGO CONCERT PIANIST TO GIVE BASS LAKE CONCERT

The Wizard of Oz Lodge, on Bass Lake, will feature a piano recital of Chopin's "DeBussy" and Brahms' music, played by Florence Henline, concert pianist of Chicago, immediately following the "fabulous food" buffet this Friday evening, Aug. 6.

Miss Henline, a former pupil of Rudolph Ganz, has played with several major orchestras, including the Chicago Symphony Orchestra and the Grant Park Symphony Orchestra.

The concert is free to those attending the dinner, which is served from 6 to 7:30 p.m.

The public is cordially invited. For reservations phone Knox 772-2405.

# The bold new challenge from SUPERPICKER

New Idea challenges any other Cornpicker to pick as clean, as fast, as plug-free as the new Superpickers... in any stand of corn.

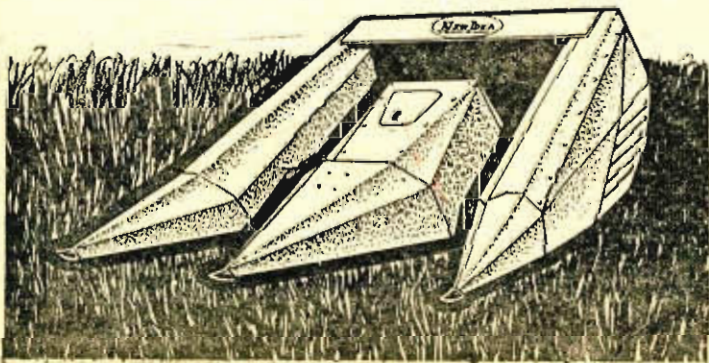
That's the challenge. Want the facts to back it up? Stop in. Right now we're trading big on Superpickers — pull type and mounted.

- Big Capacity! • Non-Stop Picking! • Pick'n husk, pick'n shell, pick'n grind... switch from one to another in minutes!

SUPERPICKER! On display at

"As Advertised in the Farm & Home Section"

## BREEDING'S FARM SUPPLY Plymouth



TRY NEW REMINGTON "Hi-Speed" 22's with "golden" Bullets for best results in all types of shooting

- Exclusive bullet plating provides "golden" color and gives you a cleaner, harder bullet finish that will function better in all 22's.
- Redesigned hollow point bullet provides more uniform mushrooming.
- Protection from heat and cold.
- Won't collect lint or grit.
- PLUS the flat trajectory smashing power and exclusive "Kleanbore" priming features of famous Remington "Hi-Speed" sporting ammunition.

Remington

"Kleanbore" is Reg. U. S. Pat. Off., "Hi-Speed" is a trademark of Remington Arms Company, Inc., Bridgeport 2, Conn.

"As Advertised in the Farm & Home Section"

HOLLAND'S HARDWARE

Argos

The



is on at

Culver Clothiers

STARTING FRIDAY, AUG. 6TH

Here Is Your Chance To Buy Quality Clothing At Greatly Reduced Prices

Brand Names Known For Quality, Such As:

ARROW  
JANTZEN  
FLORSHEIM  
LEVI

DONEGAL  
JARMAN  
WOLVERINE  
HUBBARD  
CURLEE  
BROOKFIELD

CHAMP  
CAMPUS  
ALLIGATOR  
BUD BERMA

BEAU  
BRUMMEL  
B. F. GOODRICH  
PURITAN

PLENTY OF BACK TO SCHOOL SPECIALS FOR BOYS IN SLACKS, SHIRTS, SHOES & JACKETS 1/4 to 1/2 OFF

Culver Clothiers  
Culver, Indiana

