

# THE CULVER CITIZEN

ON LAKE MAXINKUCKEE ★ INDIANA'S MOST BEAUTIFUL LAKE

VOLUME 79, NUMBER 30

CULVER, INDIANA, THURSDAY, JULY 26, 1973

TEN CENTS PER COPY

## Maxinkuckee Festival SIDEWALK DAYS JULY 27 & 28

### Master Schedule

#### MAXINKUCKEE SUMMER FESTIVAL

**THURSDAY JULY 26, 1973**

7:00 p.m. QUEEN CONTESTANTS TEA

**FRIDAY JULY 27, 1973**

SIDEWALK DAYS SPONSORED BY LOCAL MERCHANTS

10:00 a.m. KIDDIES PARADE (ages 1-16 forms at Bonines Funeral Home)

5:00 p.m.-7:30 p.m. CULVER POLICE DEPT. STEAK FRY (town park)

6:30 p.m. SKI SHOW (town park)

6:30 p.m. PARACHUTE JUMPERS DURING SKI SHOW (Town Park)

9:00 p.m. QUEENS CONTEST COMPETITION (Swim suit and evening gowns; Culver High School Auditorium, Free)

**SATURDAY JULY 28, 1973**

SIDEWALK DAYS SPONSORED BY LOCAL MERCHANTS

9:00 a.m. ICE CREAM SOCIAL BOOTH (Culver Fire Station will last all day)

10:00 a.m. SWIM CONTEST AND GAMES (all ages Culver Beach)

5:00 p.m.-8:00 p.m. LIONS CLUB CORN ROAST (town park)

6:30 p.m. CARNIVAL SPONSORED BY CULVER FIRE DEPT. (located at fire station games and prizes)

8:00 p.m. MISS MAXINKUCKEE QUEEN CROWNING (Culver Beach)

9:00 p.m.-12:00 p.m. DANCE CULVER JR. HIGH (live band sponsored by Beach Staff)

9:30 p.m.-10:30 p.m. TOE DECORATING CONTEST (all ages located at fire station, prizes will be awarded.)

**NEWS NUMBER 842-2297 Call Us!**

### CULVER CALENDAR FOR THE WEEK

**Thursday, July 26**

- 6:00 p.m. Culver Community Churches Retirement Seminar at Grace Church
- 6:30 p.m. American Legion Family Night
- 7:30 p.m. Maxinkuckee Festival Queen's Tea
- 8:00 p.m. Culver Jaycees meeting in Bank Lounge
- 9:00 p.m. Maxinkuckee I.O.O.F. #373

**Friday, July 27**

- 8:30 a.m. to 8:30 p.m. - Culver Merchants Sidewalk Days
- 10:00 a.m. Kiddies Parade
- 2:00 p.m. Loyal Women's Class of Grace Church
- 5 p.m. - 7:30 p.m. - Culver Police Dept. Steak Fry at Town Park
- 6:30 p.m. Ski Show at Town Park
- 9:00 p.m. Queen's Contest Competition at High School Auditorium

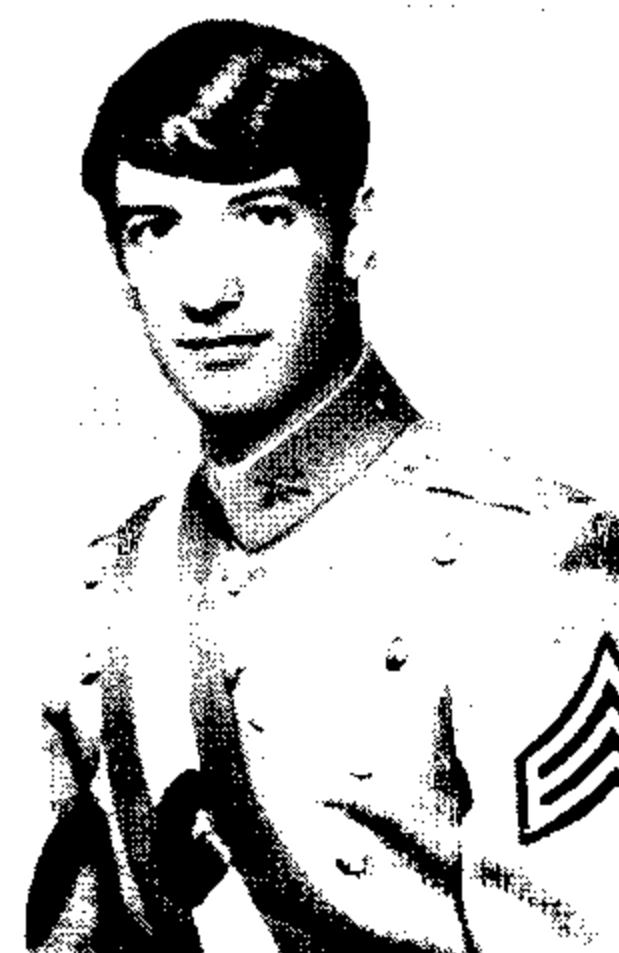
**Saturday, July 28**

- 8:30 a.m. to 8:30 p.m. - Culver Merchants Sidewalk Days
- 8:30 a.m. Grace United Church of Christ, Senior High Youth Bake Sale at Al's TV Annex

Chet Marshall, son of Mr. and Mrs. Chester A. Marshall, W. Terrance, Culver, has signed a grant in aid with Appalachian State University in Boone, North Carolina, and plans to attend that institution in the Fall.

Marshall was co-captain of both the football and basketball teams at Culver Military Academy before his graduation last June. He was a member of the CMA Varsity Club, earning 3 letters each in football and basketball.

He was a Lieutenant in Battery C while at the Academy, and was awarded the title of Hoosier Scholar. Marshall is the present



Chet Marshall

### MARSHALL SIGNS GRANT

holder of two CMA football records, most interceptions in a single game, and most interceptions in a season. He was a member of the Northern Indiana Conference 2nd Team as a Defensive Safety.

In basketball, the 6 foot 4½ inch, 200 lb. Marshall was the 4th highest scorer in Academy history, holding records for single game rebounding, most career free throws, highest free throw percentage, and the most valuable player award. He was a member of the Associate School All-Tournament Team for 2 years.

While at Appalachian State, Mr. Marshall will pursue a pre-dentistry major.

### CULVER ANNIVERSARY

by David Kelly

For those who haven't met him, David Kelly is a local teacher and life-long resident of Culver. He has kindly taken time to write a short story about an event that shaped our community, and we thank him.

Over a hundred years ago, the sun rising over Lake Maxinkuckee saw a far different sight than it sees today.

Only Indians lived here then. Members of Neeswaugee's and Quashqua's tribes lived in hogans on the high bluffs overlooking the peaceful lake.

But times were soon to change. Six strong, healthy, and brave pioneer husbands and fathers were clearing small openings in the forest canopy during the spring of 1836. Staying only a few

weeks, the men planted a small garden and left the wilderness of Northern Indiana to head back to their families in Union County.

As summer grew hotter, six pioneer families were busily packing what few personal belongings they had. Each member of each family treasured some small article. Unknown to the others, they carefully hid them among their family possessions in the covered wagon. Finally everything was ready. The six families, Logan, McDonald, Thompson, Brownlee, Voreis and Dickson, said goodbye to their friends and headed to a new home.

Following the newly opened Michigan Road, the six families slowly progressed northward. After nearly two weeks of travel, they approached a significant reference point. A tavern on the east side of the road marked the location where the caravan would turn westward. After one more day, the families saw their destination, a beautiful lake. Their long journey had come to an end.

The date was July 26, 1836. They built their log cabins, grew and prospered, and became the foundation of Union Township and Culver.

#### NOTICE

Man needed for Street Department, must live in Culver. Steady year-round work. Apply at Clerk's Office, Town of Culver, Telephone (219) 842-3140.

**Tuesday, July 31**

- 1:00 p.m. Senior Citizens Meeting
- 6:00 p.m. The CITIZEN news and advertising deadline

**Sunday, July 29**

- 3:00 p.m. Grace United Church of Christ, Fidelis Group - BBQ and Meeting
- 4:00 p.m. Summer Naval Band Concert at Eppley Auditorium
- 6:30 p.m. Culver Military Academy Garrison Parade, Riding Hall Terrace

**Monday, July 30**

**Wednesday, July 27**

**Thursday, July 26**

**Friday, July 27**

**Saturday, July 28**

**Sunday, July 29**

**Monday, July 30**

**Tuesday, July 31**

**Wednesday, August 1**

**Thursday, August 2**

**Friday, August 3**

**Saturday, August 4**

**Sunday, August 5**

**Monday, August 6**

**Tuesday, August 7**

**Wednesday, August 8**

**Thursday, August 9**

**Friday, August 10**

**Saturday, August 11**

**Sunday, August 12**

**Monday, August 13**

**Tuesday, August 14**

**Wednesday, August 15**

**Thursday, August 16**

**Friday, August 17**

**Saturday, August 18**

**Sunday, August 19**

**Monday, August 20**

**Tuesday, August 21**

**Wednesday, August 22**

**Thursday, August 23**

**Friday, August 24**

**Saturday, August 25**

**Sunday, August 26**

**Monday, August 27**

**Tuesday, August 28**

**Wednesday, August 29**

**Thursday, August 30**

**Friday, August 31**

**Saturday, September 1**

**Sunday, September 2**

**Monday, September 3**

**Tuesday, September 4**

**Wednesday, September 5**

**Thursday, September 6**

**Friday, September 7**

**Saturday, September 8**

**Sunday, September 9**

**Monday, September 10**

**Tuesday, September 11**

**Wednesday, September 12**

**Thursday, September 13**

**Friday, September 14**

**Saturday, September 15**

**Sunday, September 16**

**Monday, September 17**

**Tuesday, September 18**

**Wednesday, September 19**

**Thursday, September 20**

**Friday, September 21**

**Saturday, September 22**

**Sunday, September 23**

**Monday, September 24**

**Tuesday, September 25**

**Wednesday, September 26**

**Thursday, September 27**

**Friday, September 28**

**Saturday, September 29**

**Sunday, September 30**

**Monday, October 1**

**Tuesday, October 2**

**Wednesday, October 3**

**Thursday, October 4**

**Friday, October 5**

**Saturday, October 6**

**Sunday, October 7**

**Monday, October 8**

**Tuesday, October 9**

**Wednesday, October 10**

**Thursday, October 11**

**Friday, October 12**

**Saturday, October 13**

**Sunday, October 14**

**Monday, October 15**

**Tuesday, October 16**

**Wednesday, October 17**

**Thursday, October 18**

**Friday, October 19**

**Saturday, October 20**

**Sunday, October 21**

**Monday, October 22**

**Tuesday, October 23**

**Wednesday, October 24**

**Thursday, October 25**

**Friday, October 26**

**Saturday, October 27**

**Sunday, October 28**

**Monday, October 29**

**Tuesday, October 30**

**Wednesday, October 31**

**Thursday, November 1**

**Friday, November 2**

**Saturday, November 3**

**Sunday, November 4**

**Monday, November 5**

**Tuesday, November 6**

**Wednesday, November 7**

**Thursday, November 8**

**Friday, November 9**

**Saturday, November 10**

**Sunday, November 11**

**Monday, November 12**

**Tuesday, November 13**

**Wednesday, November 14**

**Thursday, November 15**

**Friday, November 16**

**Saturday, November 17**

**Sunday, November 18**

**Monday, November 19**

**Tuesday, November 20**

**Wednesday, November 21**

**Thursday, November 22**

**Friday, November 23**

**Saturday, November 24**

**Sunday, November 25**

**Monday, November 26**

**Tuesday, November 27**

**Wednesday, November 28**

**Thursday, November 29**

**Friday, November 30**

**Saturday, December 1**

**Sunday, December 2**

**Monday, December 3**

**Tuesday, December 4**

**Wednesday, December 5**

**Thursday, December 6**

**Friday, December 7**

**Saturday, December 8**

**Sunday, December 9**

**Monday, December 10**

**Tuesday, December 11**

**Wednesday, December 12**

**Thursday, December 13**

**Friday, December 14**

**Saturday, December 15**

**Sunday, December 16**

**Monday, December 17**

**Tuesday, December 18**

**Wednesday, December 19**

**Thursday, December 20**

**Friday, December 21**

**Saturday, December 22**

**Sunday, December 23**

**Monday, December 24**

**Tuesday, December 25**

**Wednesday, December 26**

**Thursday, December 27**

**Friday, December 28**

**Saturday, December 29**

**Sunday, December 30**

**Monday, December 31**

**Tuesday, January 1**

**Wednesday, January 2**

**Thursday, January 3**

**Friday, January 4**

**Saturday, January 5**

**Sunday, January 6**

**Monday, January 7**

**Tuesday, January 8**

**Wednesday, January 9**

**Thursday, January 10**

**Friday, January 11**

**Saturday, January 12**

**Sunday, January 13**

**Monday, January 14**

**Tuesday, January 15**

**Wednesday, January 16**

**Thursday, January 17**

**Friday, January 18**

**Saturday, January 19**

**Sunday, January 20**

**Monday, January 21**

**Tuesday, January 22**

**Wednesday, January 23**

**Thursday, January 24**

**Friday, January 25**

**Saturday, January 26**

**Sunday, January 27**

**Monday, January 28**

**Tuesday, January 29**

**Wednesday, January 30**

**Thursday, January 31**

**Friday, February 1**

**Saturday, February 2**

**Sunday, February 3**

**Monday, February 4**

**Tuesday, February 5**

**Wednesday, February 6**

**Thursday, February 7**

**Friday, February 8**

**Saturday, February 9**



## OBITUARY

Mrs. Chloe C. Hackett passed away Tuesday, July 24, 1973, in Porter Memorial Hospital at Valparaiso, following an illness of over a year. Mrs. Hackett was born May 17, 1888 in Kewanna to John W. and Carrie E. Freels Barger. She lived in Culver since 1941, coming from Gary. Mrs. Hackett and her husband operated the Hackett Boat Landing on West Shore Drive. Mrs. Hackett married Lawrence B. Hackett on Aug. 20, 1910 in Rochester. Mr. Hackett died July 26, 1971.

Surviving Mrs. Hackett are a daughter, Mrs. John (Anabelle) Logan, Chesterton; a son, Dr. F. D. Hackett, Gary; and a brother, Ernest A. Barger, St. Petersburg, Fla. A sister preceded her in death. Mrs. Hackett had 8 grandchildren and 15 great-grandchildren.

Services will be held Friday, July 27, at 2:00 p.m. at the Bonine Funeral Home, Culver, with Rev. Philip Lutz, pastor of the Leiters Ford United Methodist Church, officiating. Burial will be in I.O.O.F. Cemetery, Leiters Ford.

Friends may call at the Bonine Funeral Home after 2:00 p.m. on Thursday.

## STANDINGS

### Pee Wee League

	Won	Lost	Tie
Monterey Buckeye	4	1	1
State Exchange Bank	4	1	1
Fire Department	3	3	
Leiters Ford	1	4	
Bennett Plumbing & Htg	1	4	

### Major League

	Won	Lost	Tie
Mr. T's	8	1	
Leiters Ford Merchants	6	3	
Easterday Construction	6	3	1
Snyder Motor Sales	5	4	
McKinnis Pharmacy	5	4	1
Monterey Bank	4	6	
Van Horn Ford	4	6	
Monterey Buckeyes	0	11	

The Culver Little League season is almost completed, but the play is better and better for every game. Here, Mike Geiselman lets a high ball (it's just in front of the catcher in the photo) go by.

But the next pitch is much better, and he hits for a linedrive, seen here whizzing past the pitcher. This game was played last Friday, and pitted Van Horn Ford of Culver against the players from the Monterey Bank.



**What A Day!**

## Birthdays

### July 26

Walter Steven  
(Rusty) Chisholm  
David Cooper  
Lila (Bean) Cooper  
Dick Newman

### July 27

Marian (Prosser) Garrett  
Mr. Michael Kozlowski  
Tom Zoss

### July 28

Pamela Crozier  
Mrs. Orville Hinline  
Joleen Knepper  
Bonnie Lou (Mahler) Smith  
Blanche Wooldridge (83rd)

### July 29

Mrs. Shirley G. Baker  
Clifford Bean, Jr.  
Kenneth Foss  
Dick Hoesel

### July 30

Charles Arthur Melangton  
Donald Miller

Norma Jean  
(Davis) Robertson

### July 31

Robert Lindvall  
Dean D. Smith

### August 1

Mrs. Lulu Henderson  
Tina Ray Martin  
Richard Overmyer  
Larry Scheuer  
Walter A. Wise  
Sharon (Lindvall) Witt

Happy Birthday!

### Belated "Happy Birthday"

#### July 22

Randy Banks  
Beverly Sue  
(Thomas) Knoezer  
Flo Mahler

#### July 23

Mrs. Carl O. Bennett  
Charlotte Ruth Brucker  
Joseph Currens  
Robert Hill  
Mrs. Kenneth Ruby

#### July 24

Mrs. Amy L. Anderson

John Houghton  
Mrs. Barrett Irvin  
Imogene Miller  
James Robert Readell  
Mrs. Edward O. Schultz

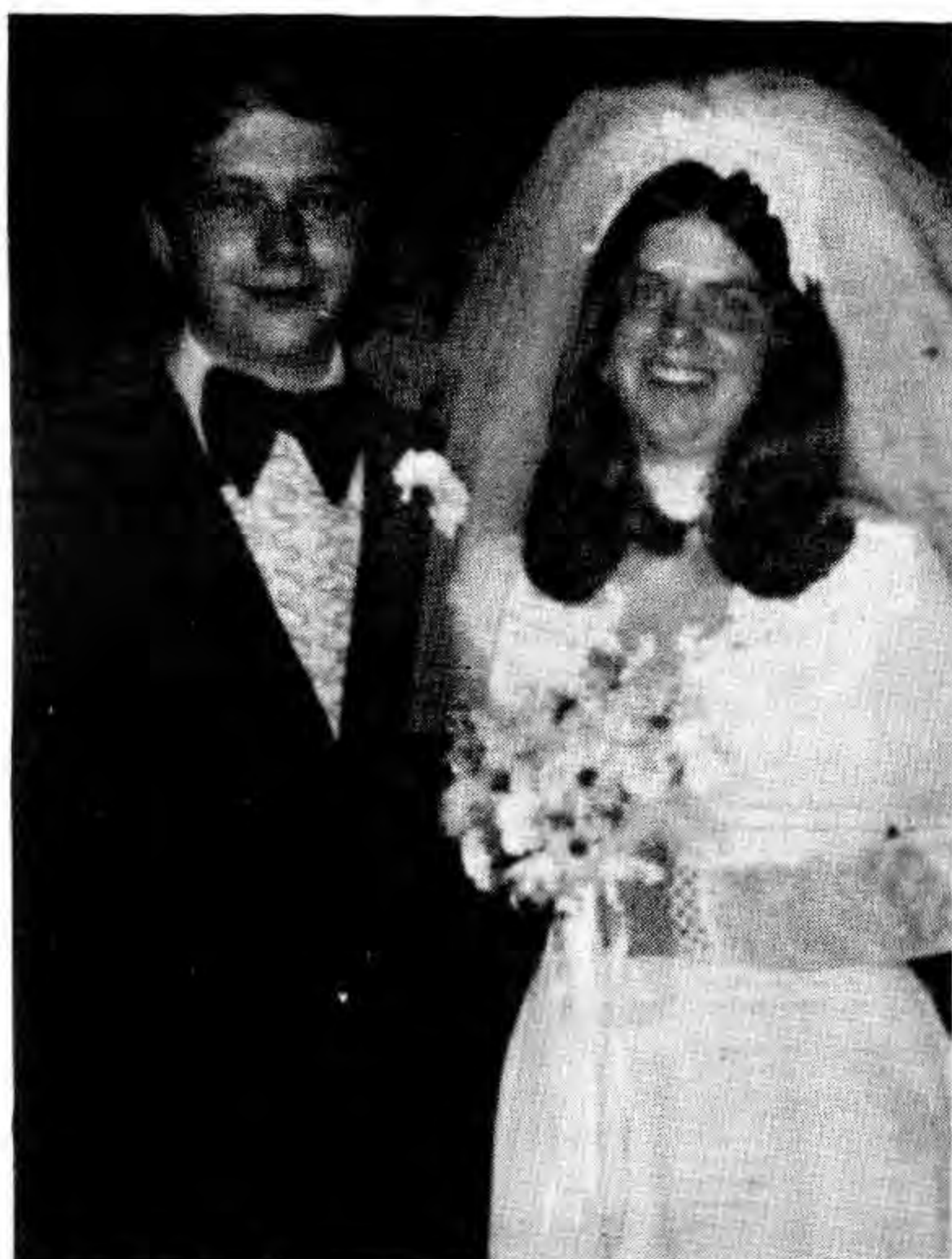
#### July 25

Fran Babcock  
John Burkhart  
Mrs. Marjorie Ferrier  
Frank Johnston  
Cindy Kinney  
June Calhoun Sage  
Phillip Scruggs  
Donald Sytsma  
Ronald Sytsma



# Society

## Long-Sytsma



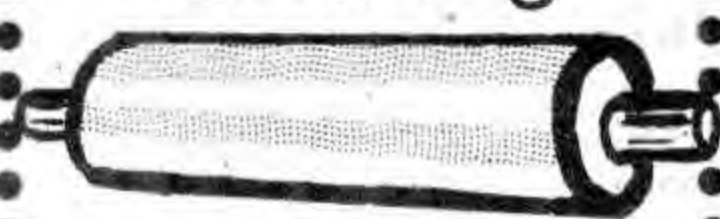
The marriage of Miss Karen Jane Long to Mr. Richard Allen Sytsma took place Saturday, June 30 at the Grace United Church of Christ at 2:00 p.m. The bride is the daughter of Mr. and Mrs. Dale R. Long of Culver. The bridegroom's parents are Mr. & Mrs. Albert Sytsma of Culver. The pastor, the Reverend John Krueger officiated. A reception followed in the church social room.

Mr. & Mrs. Long gave their daughter in marriage. She wore a satin under lace gown with appliques of Venice lace outlining the sheer yoke of the bride's gown and accented the princess lines of the A-lineskirt which extended into a chapel-length train. The gown featured a duchess collar and fitted long sleeves. Her headdress was a half-hat of Venice lace which held her tiered illusion veil. Her flowers were a colonial nosegay of white carnations and blue daisies.



Alteration of Ladies' and Gents' garments. Reweaving, cigarette burn, moth holes, etc. Albert the Clothes Doctor, North Main near Washington, Culver, Call 842-3513 for appointment.

## Rubber Roll Covering



URETHANE, NATURAL NEOPRENE, ETC.

ROYAL RUBBER CO.  
Div. of Rubber Shop, Inc.  
P.O. Box 267, Dept. Z  
South Bend, Ind. 46624  
PHONE (219) 291-6442

and Terry Beck.

At the Reception Mrs. Howard Chrisenberry and Mrs. George Kintzel aunt s of the bride served cake, and Mrs. Robert Middleton, aunt of the groom and her daughter Stephanie served punch and coffee.

Following their honeymoon to Florida, Mr. & Mrs. Richard Sytsma will reside in Culver, Indiana.

Mrs. Sytsma is a graduate of Culver Community High School and Ancilla College of Donaldson, Indiana.

Mr. Sytsma is a graduate of Culver Community High School. He is attending R.E.T.S. Technical College in South Bend and is employed at Al's TV and Appliances in Culver.

## RAINBOW NEWS

An enjoyable evening was held in the club rooms of the Masonic Temple Monday, July 16 following the closing of the regular stated meeting of the Culver Assembly, Order of Rainbow for Girls. Twyla Shaffer was the lucky girl who held the "surprise package" when time ran out in playing "Dirty Bingo". Bill Allen was once more on hand to instruct the girls in the fine art of pool. Susan Middleton was the chairman of the refreshment committee. Mrs. Verlin Shaffer will be the adult in charge of the next "Fun Night".

The assembly will sell icecream on Friday, July 27 from 4:00 p.m. to 8:00 p.m. and on Saturday, July 28 starting at noon. This is the project of the worthy advisor, Vicki Cornett.

## ELSTON



## ANNOUNCE ENGAGEMENT

Mrs. Martha Elston, 314 S. Plymouth St., Culver, has announced the engagement of her daughter, Deborah Lee, to Mr. John A. Haut, of Grant Park, Illinois.

Mr. Haut is the son of Mr. and Mrs. Donald J. Haut, R. 1, Grant Park, Illinois.

Miss Elston is a graduate of Culver Community High School, and is presently employed by the Baker & Taylor Company, Momence, Illinois.

The prospective bridegroom is working for his apprenticeship as a tool and dye maker.

The couple plan an April 1974 wedding.



## School Board

### BUS ROUTES OPEN, OTHER BUSINESS

The Culver Community Schools Corporation Board of School Trustees met in regular session in the Central Office on Tuesday, July 17th. Approval was given to Mr. Al Triplett and Mr. William Keith for the use of three or four school busses to transport Little League Baseball players to Chicago, August 14th.

A resolution was unanimously accepted by the Board to retire all non-instructional personnel, except bus drivers, at age 66.

Superintendent Allen presented each Board member with a copy of the financial statement and advised them that all accounts have been paid up and that he deemed the financial situation of the Corporation to be very sound.

The Board was advised that with the securing of a math and industrial arts teacher the staff will be completed for the coming year. The Board was also advised that applications were still being received for school bus routes No. 14, which is south and west of Leifers Ford; school bus route No. 15, which runs approximately three miles west of Langenbaum Lake east to Culver by way of Hawks Lake and school bus route No. 19, which is west of Burr Oak and south down Thor road to Culver.

# FARM Loans

The State Exchange Bank takes pride in being of utmost service to the community, urban and rural. Our farmer friends have depended on the State Exchange Bank for over 71 years to provide the funds they need for such items as farm machinery, seed, livestock and the money needed to carry the farmer from planting time to harvest time.

## THE STATE EXCHANGE BANK

under one management

CULVER  
PLYMOUTH  
ARGOS

"The Bank That  
GOOD WILL Built"

## FARMERS STATE BANK

LAPAZ



WEEKEND ACTIVITIES AT  
CULVER BEACH

# Swim Meet

Activities for this week-end at the Culver Beach will include a swim meet, games, relays and contests in and out of the water for kids of all ages.

Mark Blocker will be in charge of the swim meet. Contests will consist of a sprint race, distance race, underwater race, free relay, a greased watermelon contest and a painted rock hunt.

Roy Schrimsher will be in charge of the diving contests. Mike Busart will be supervising the relay races, games, and water balloon fight in the sand.

There will also be games for the kids who are five years old and younger. Cindy McKee will help them find pennies in the penny scramble and supervise some relays and games.

Judy Keith is in charge of the dance which will be held Saturday, July 28th at the Junior High Gym. Music will be provided by the Wombat, a group from South Bend headed up by Dave Mester.

# Fun Week

## CULVER BIBLE CHURCH ANNOUNCES FUN WEEK

The week of July 23rd through 28th has been titled "Fun Week" by the leaders of Culver Bible Church. The week long schedule of special events is designed to interest the teenagers of the community, and will provide the vehicle to build a dialogue between Church Leaders and the youth of the community.

All young persons are invited to attend these events as scheduled. For further information, call the Culver Bible Church at 842-2860.

The schedule of this fantastic far-out fun week for teens is as follows:

Monday, 7:00—Round-Up, Tuesday, 6:00—Beach Cook Out, Wednesday, 8:30—Pizza Party, Thursday, 6:30—Rochester Fair, Friday, 6:30—Hayride and Weiner Roast, Sunday, Services: 9:30, Sunday School: 10:30, Morning Worship: 6:30, Youth Meeting (The Theme is Teen Problems): 7:30, Evening Services.

## Tri-Kappa Meeting

On Monday evening, July 16, Epsilon Nu Chapter of Tri-Kappa met at the home of Mrs. N.E. Perry, East Shore Drive, for their Initiation Meeting. Those initiated were: Mrs. Glen Lemler, Mrs. Thomas Pugh, Mrs. David Campbell, and Miss Susan Holt.

Installation of new officers was also held. New officers are: Mrs. Edward Schultz, Vice-President; Mrs. C.E. Bair, Jr., Recording Secretary; and Mrs. William Crise, Corresponding Secretary.

Guests from other chapters were: Mrs. Jo-Ann Johnston, Indianapolis, Mrs. Barbara Meeker, Munster, and Mrs. Dorothy Chase, Plymouth.

The next meeting will be held on August 20, 1973, at the home of Mrs. Fred Hanna, East Shore Drive, Culver.

## TONS OF MAGAZINES

Some 8 to 10 tons of magazines have been collected—and stored—by Culver Scouts over the past year. But the scouts cannot find an outlet for them, either for cash or for free. Can anybody help the scouts find an outlet? Phone 842-3498. Thank You.

## YOUR HOME - A SAFETY SPOT, NOT A HAZARD ZONE

A safe home, a loving home, is really an idea that we can take with us, wherever we are.

Broadcast this week over many stations including:  
WSBT - 960 kc  
Sunday 9:15 AM

The truth  
that HEALS  
A Christian Science series

## TRI-WAY DRIVE-IN

Wed. Thur. Fri. Sat.  
July 25-26-27-28

PAT GARRETAS  
BILLY THE KID  
With James Coburn

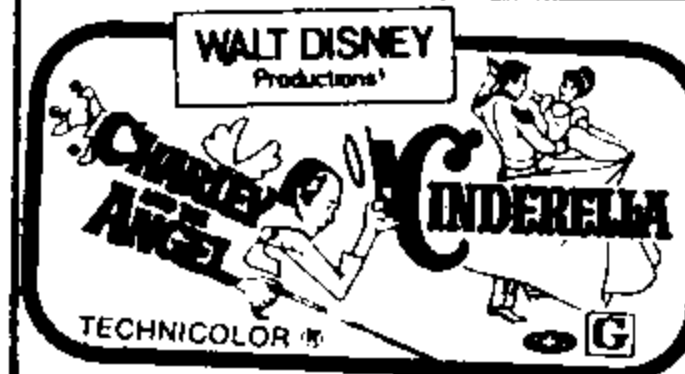
Also  
PRETTY MAIDS ALL IN A ROW

Sun. Mon. Tues.  
July 29-30-31  
Double Bill  
Nurse Pictures  
YOUNG NURSES  
STUDENT NURSES

## GAYBLE NORTH JUDSON, IND.

### NEW MANAGEMENT

WED. - SAT.  
Shows At  
"Cinderella" 7:00 "Charlie" 8:20



### SUN - MON - TUE

SUN: "Ace" 2:00 + 5:25 - 8:55  
"Heartbreak" 3:40 - 7:10  
"Ace" 7:00; Mon. Tues.  
"Heartbreak" 8:40



### —ALSO—

"Ace Eli & Roger of the Skies (PG)

Restorations of garments,  
restyling, alterations,  
Scientific Repairing.  
Reweaving of cigarette burns,  
moth holes, tears, etc. Albert  
the Clothes Doctor, Main St.  
near Washington. 842-3513.

## The LITTLE GALLERY

211 Washington  
Culver, Ind.

Clothes and Gifts

From 50¢ to \$20.00

Open 10 a.m. to 5 p.m.

## The Little Gallery



Do you know anything interesting or unusual about our community? Do you have an old picture? A story? A memory? Let us know about them, please! Just send a note

to the CITIZEN, or call us at 842-2297. We'll help the rest of the community learn something new about our home.

Bernadette Zoss, Editor

# Sidewalk Sale...

POWER MOWERS

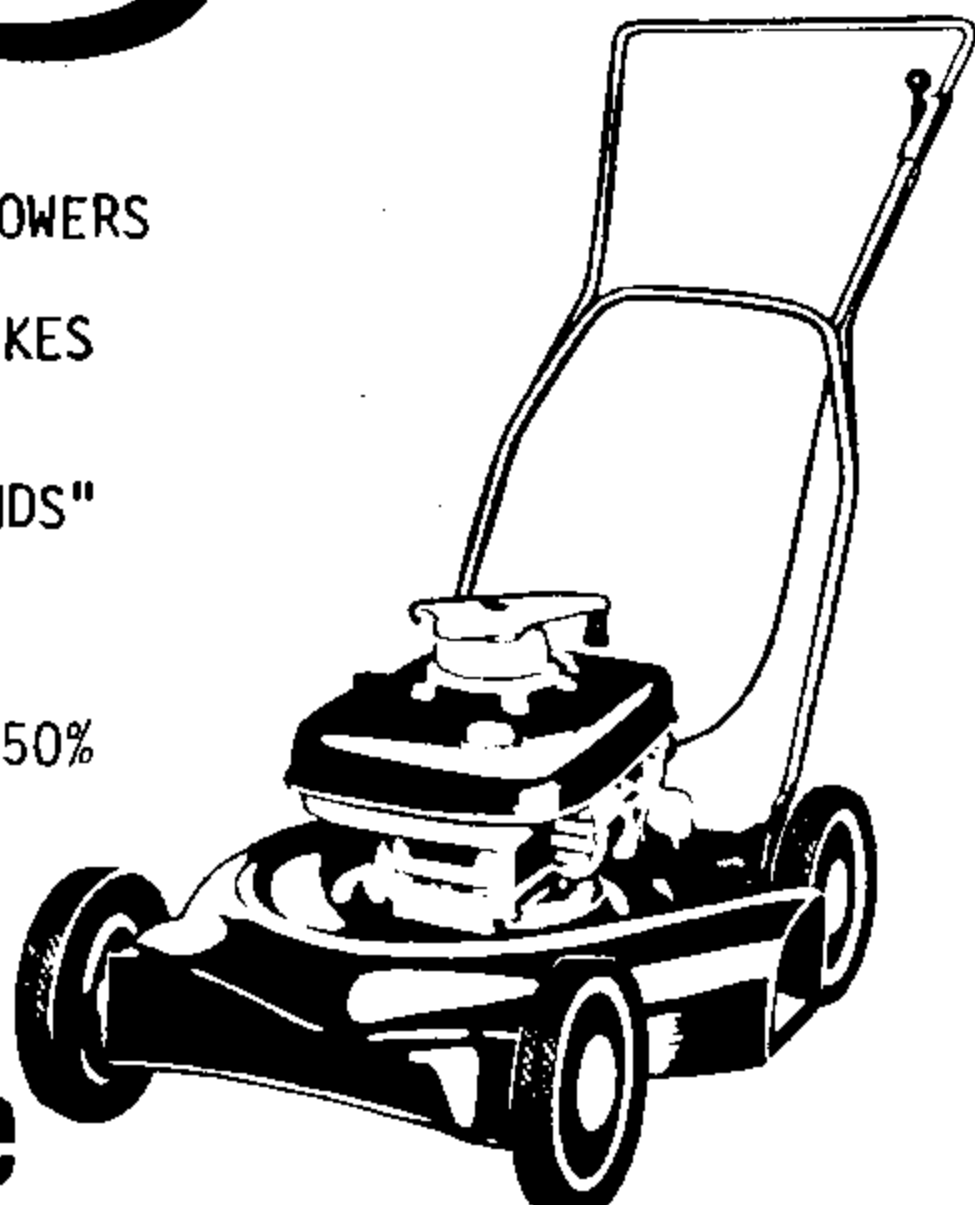
LAWN RAKES

"ODDS AND ENDS"

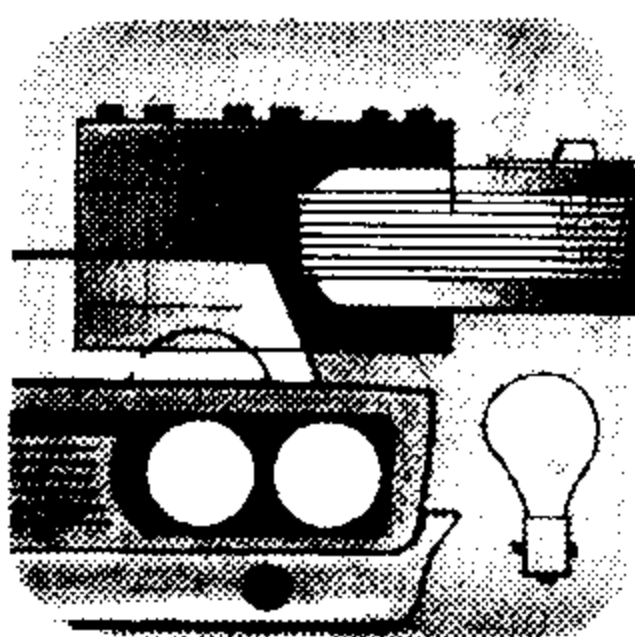
SOME PAINTS

SAVE UP TO 50%

Culver  
Hardware



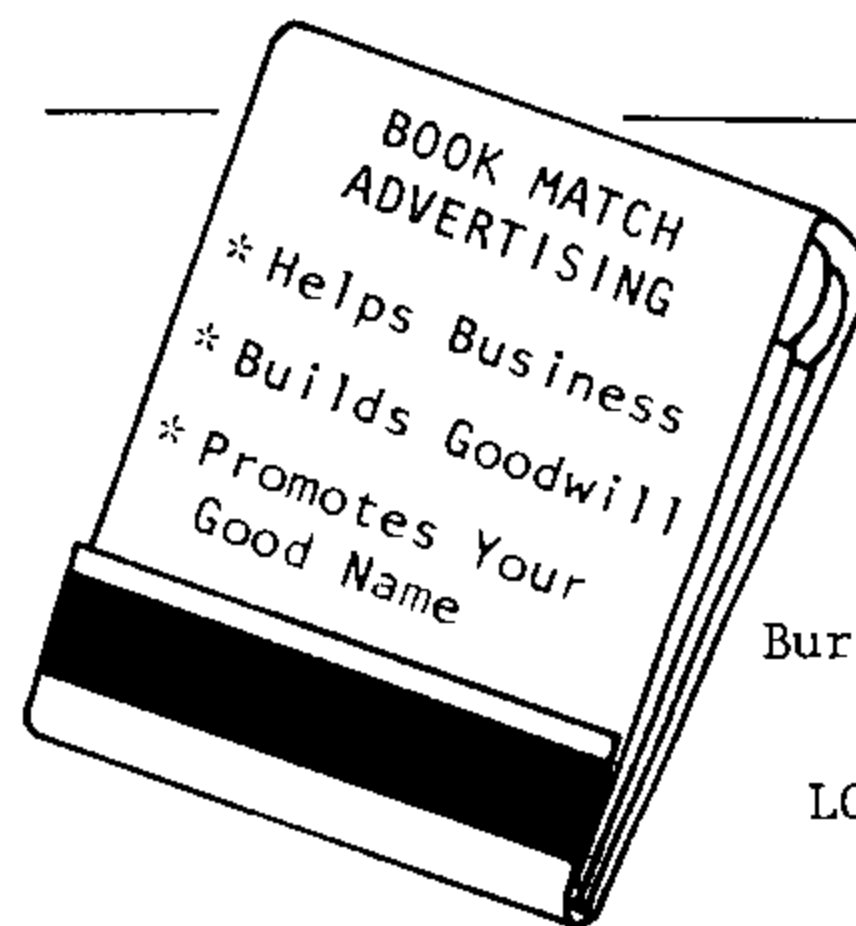
## KEEP YOUR CAR RUNNING SAFELY



Starting Here...  
Great Motoring

We take care of your  
every motoring need,  
repairs. Call us soon.

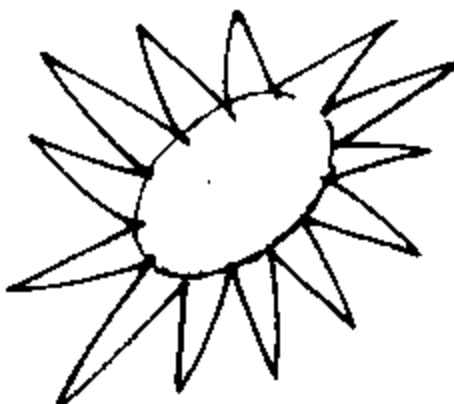
GORDON'S  
TEXACO



## Aero - AD

Burr Oak, Indiana 46509  
Phone 842-2111

LOW COST ADVERTISING



An untuned car  
is a lonely walk!

GET OUR  
SUMMER



TUNE-UP SPECIAL  
Expert Service....  
Quality Parts....

AVAILABLE AT THESE LOCAL DEALERS

SNYDER MOTOR SALES VAN HORN FORD - MERCURY  
BOB'S MARATHON CHUCK'S STANDARD  
KEITH'S SUNOCO GORDON'S TEXACO  
HATTEN MOTOR SALES ZEHNER'S ARCO

Sponsored By

CULVER AUTO SUPPLY



PRESTON GENTRY AT TRI-STATE COLLEGE

Preston L. Gentry, son of Mr. and Mrs. Oris Gentry of Rt. 2, Culver, spent three days of orientation recently on the campus of Tri-State College. Preston will be a freshman enrolled in information processing at the Angola, Indiana college in September. While on campus, the students were given tests in mathematics and English. The students also met with their faculty advisors to set up their fall course schedules.

*Fannie May*  
KITCHEN FRESH CANDY

CULVER  
NEWS  
AGENCY



Albert the Clothes Doctor, a good man for weight watchers and weight loss people to get acquainted with. Repairing and alteration of ladies' and gents' garments. Albert the Clothes Doctor, North Main near Washington, Culver. Call 842-3513 for appointment.

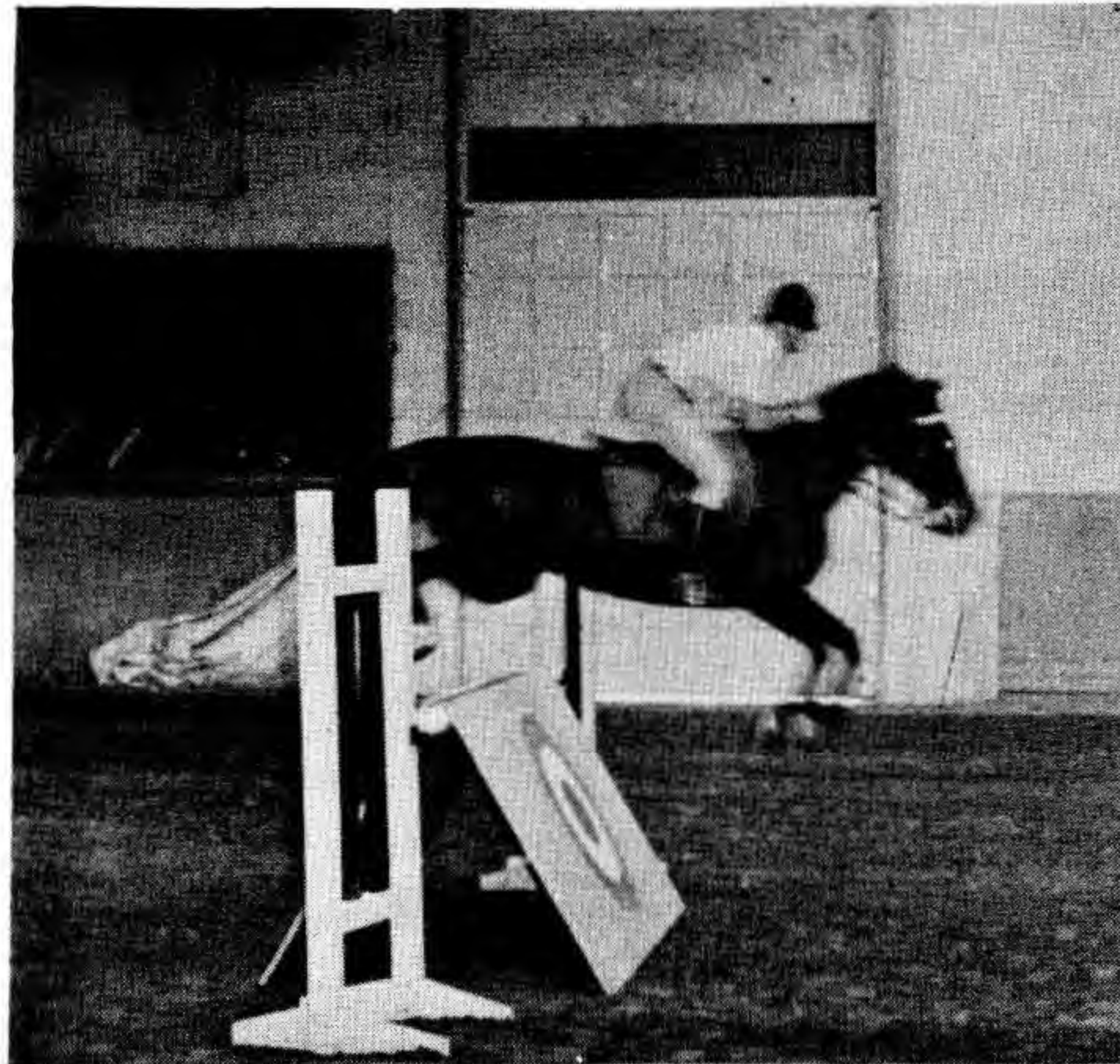
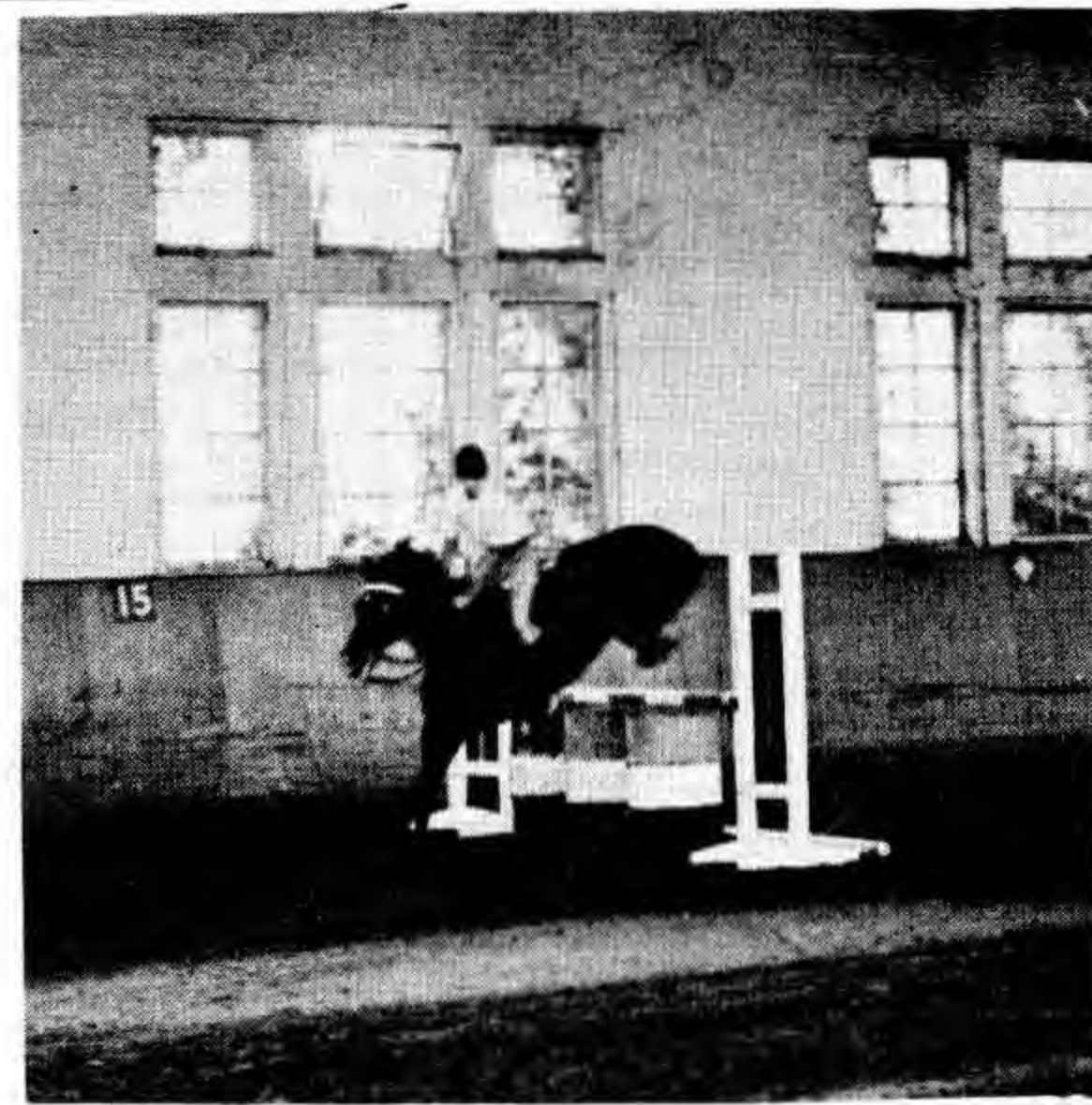
# Guest Day



CULVER SUMMER SCHOOLS HOLD GUEST DAY

Last weekend was Guest Day at the Culver Summer Schools, and many parents and families associated with the Academy or who were thinking of sending children to study here in Culver visited our community. As part of the program, the Summer Schools produced a short display of jumping and riding skills for the guests. Introduced by Capt. R. Jeffry

Honzik, ING, Counselor of the Black Horse Troop, the crowd witnessed competitive jumping, including the two blind jumps shown in the photographs. The barrel jump and the bullseye jump are hard for horses to take because they cannot see what is beyond the jump. The willingness of the horse to take the jump is a credit to his trust of the rider. The presentation was capped with a human and horse pyramid that was nearly perfectly symmetrical.



PHILLIPS FAMILY MOVES TO TALLAHASSEE

Mrs. Sandra Phillips and her children Rebecca and David left Thursday for Tallahassee, Florida, where

Mrs. Phillips will be employed as a registered nurse. Mrs. Phillips is the daughter of Mr. and Mrs. Roth Cline, Culver. She was formerly employed as a nurse for a Plymouth nursing home.

A LITTLE BIT LIKE THE OLD GENERAL STORE

home cooking

\* restaurant

\* gift shop

\* sporting goods

\* live Bait & Tackle



HANSEN'S OF CULVER

614 LAKE SHORE DRIVE  
OPEN 7 DAYS A WEEK

CULVER

Two Bedrooms



offered by

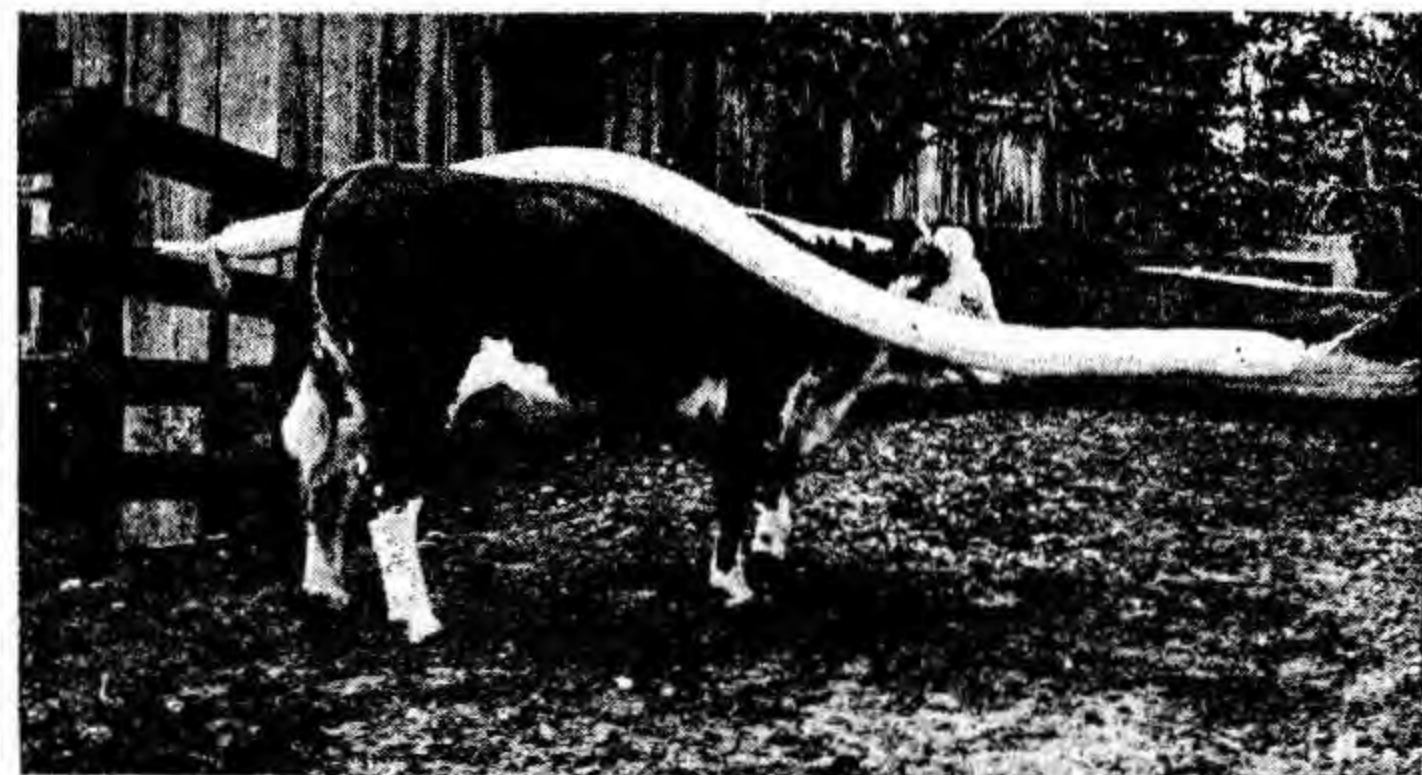
THOMAS REAL ESTATE

321 West Terrace Pkw.

Culver

842-2311

EASY, EFFECTIVE, ECONOMICAL  
FLY AND LICE CONTROL



Cow Life - Cattle Rub

U. S. PATENT 3677233 CANADIAN PATENT PENDING

MADE FOR CATTLE - BY A CATTLEMAN

Practically labor free—Simply hang the rub so cattle will go under it and pour along its length approximately 4 gallons of diesel fuel and insecticide or whatever solution you prefer.

Price: \$10.00

Dealer:

ZECHIEL FARM SERVICE  
RT. 1, BOX 1, 219-842-2171  
CULVER, INDIANA 46511





"From Veri The Barber"

All Hair cuts Shaped, Long,  
Short, Reg. or Flat top....2.00

Razor Cuts ....3.00

Boy or Girl Shags....3.00 Styling 5.00 and Up.

**Special Rates on:**

Families with 5 or more haircuts  
and Bald Head with all Hair cut off  
New Man Hairpieces are available for the man who is  
particular about appearance

Closed Mondays  
Open Tue. - Wed. - Thurs. & Sat.  
8:00 to 5:30  
Fri. 8:00 to 8:00

Veri's Barber Shop  
842-3593

## Dr. J. DeJesus

Has Resumed Practice

For particulars,  
call (219) 936-2640  
120 West Washington  
Plymouth, Indiana 46563

# Monterey First Aid



Larry Welsh, Culver resident, instructs Monterey residents in First Aid in his role as Volunteer for the Marshall County Red Cross.

Larry oversees Don Keller, who is applying a leg splint to the leg of his wife, Betty Keller.

Sue Hamman practices first aid for a broken ankle upon Delores Zehner, both from Monterey.

The Classes were held in the Monterey United Methodist Church under the auspices of the Monterey-Tippecanoe Twp. Volunteer Fire Department.



# SIDEWALK SALE



DRESSES from \$3.00  
Juniors, Misses and Half-Sizes



SLACKS AND SHORTS



BLOUSES—Long Sleeve and  
Short Sleeve—BARGAINS  
FROM \$2.00



RACKS OF SHOES from \$1.00  
and \$2.00 and up



A FEW PANT SUITS



SLEEPWEAR— AND MANY  
MORE ITEMS TO CHOOSE FROM

INSIDE THE FABRIC BARN:



SALE TABLES OF  
POLYESTER DOUBLE  
KNITS, COTTONS, WHIP-  
PED CREAMS,  
SEERSUCKER,  
AND MANY MORE

THE *Kelly* SHOP

110 N. Main Street  
Culver, Indiana





### Black Business Is Growing Rapidly

The rapid growth of the black entrepreneur is indicated by an analysis by the magazine *Black Enterprise*. One hundred businesses owned by blacks grossed sales of from 1 to 40 million dollars in 1972.

Earl Graves, publisher, said that blacks have reached a point in history where "we can identify thousands of black-owned and black-controlled businesses. Many of them are embryonic and still struggling for survival across the nation."

Mr. Graves said that more than half of the service and manufacturing firms listed were started since 1968. Employment among the emerging black-owned businesses was still relatively small, ranging from 15 to 200 employees.

### Productivity Sparks Progress

Don't discard your worn or damaged garments. Whatever the damage—small tears or large ones—they can be repaired inconspicuously. **Albert the Clothes Doctor**, North Main near Washington, Culver. Call 842-3513 for appointment.

## Pitch in on weekends.



There's lots of community action now in your local Army Reserve.

**The Army Reserve.**  
It pays to go to meetings.

45 pc.

Melamine

Service for 8

Dinnerware Set

Reg. \$14<sup>95</sup>

NOW \$10<sup>88</sup>



20 qt.

Home Canner

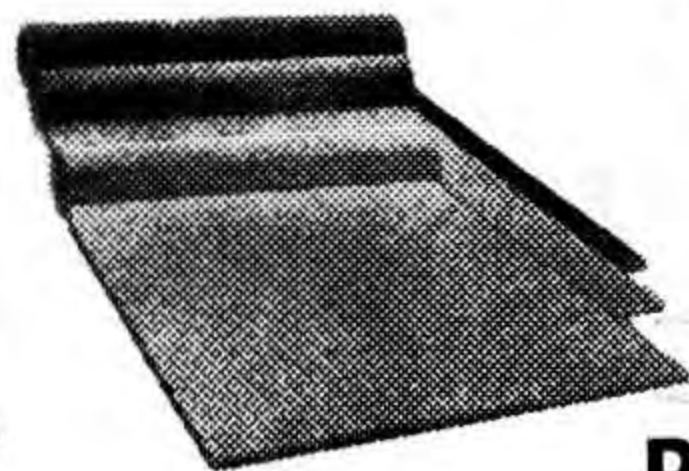
7 jar rack

Reg. \$5<sup>98</sup> NOW \$3<sup>88</sup>

PAY LESS AT **KEIM'S 5/10**

Open 8:30 - 5:30 Monday Through Saturday

# SIDEWALK SALE



\$5.95 sq. yd.

**Lee's Topside**  
**THE BEST**  
**Indoor-Outdoor**  
**Carpet Available**  
**Both Turf & Loop Pile**

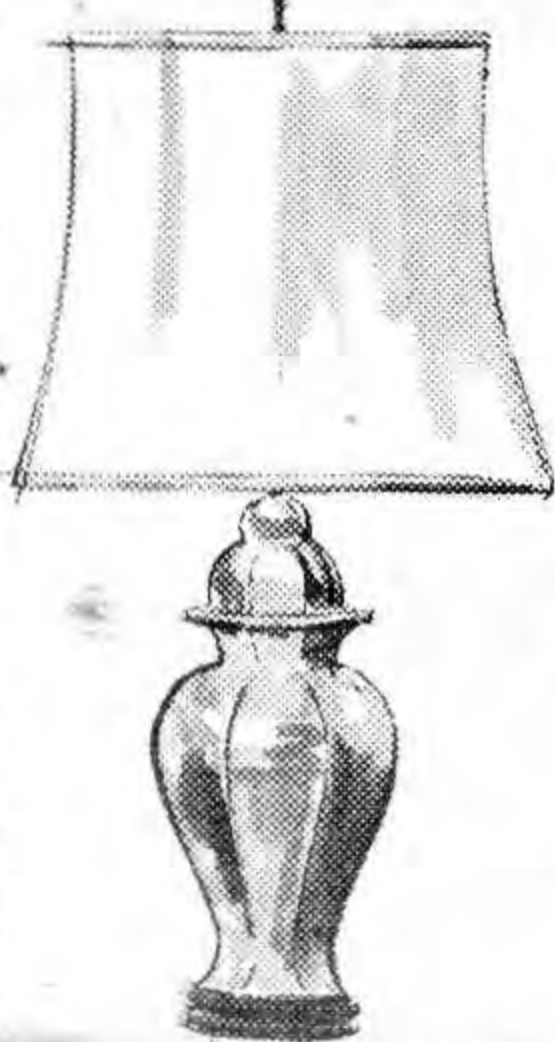


**Pictures**



**CLEARANCE**

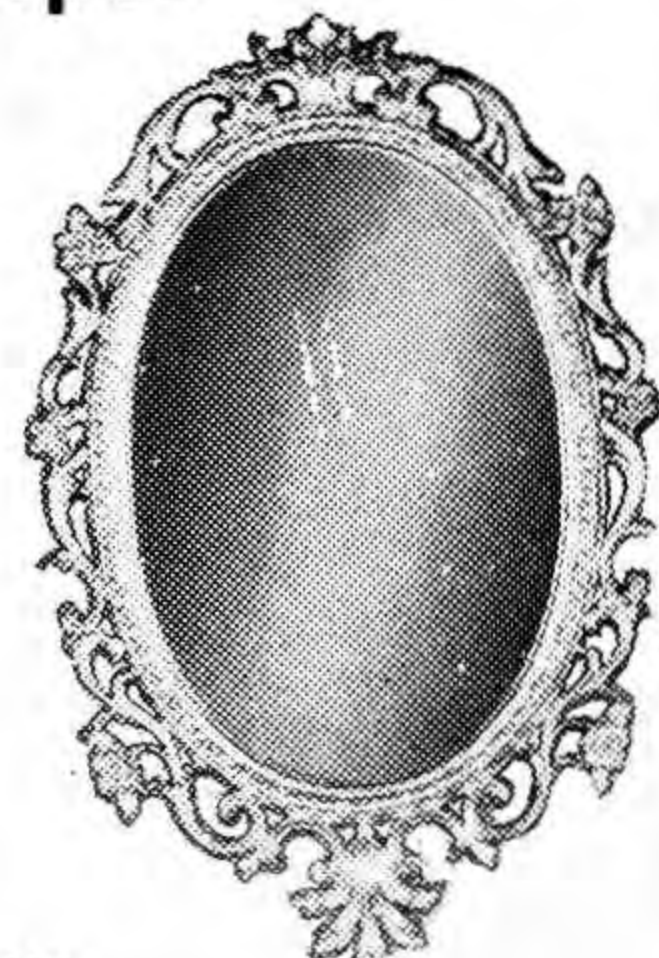
Also many shorts & remnants of indoor-outdoor carpet



**BOETSMA**

**HOME FURNISHINGS Inc.**

**Wall Decor**



CULVER, INDIANA



## Over The Next Hill

DAVE AND GRETTA KELLY

The rapidly increasing enthusiasm for cycling has brought a need for bicycling trails. If you have tried riding around the lake on a Sunday, you know what we mean. Our community does not have the convenience and safety of these organized trails for family riding. However, we do have many close, scenic and scarcely used county roads that make excellent trails for cycling. During the next few weeks of summer, we hope to bring you to a different route each week with interesting sights along the way. The route will start and finish at a familiar reference point each trip.

Our first excursion is for the beginner and is short enough so that you can make it back home without any trouble (we hope!).



Starting at the bank corner, go west on Jefferson Street until you reach Indiana 17. CAREFULLY cross the highway and turn south (left) on Thorn Road. You can now pedal fairly safely on a little-traveled country road as the cars speed past on S.R. 17 which runs parallel along your route. (A fence separates you

from disaster.) Follow Thorn Road south, noticing the wild flowers, rabbits and small hoppy toads along the road. After pedaling for an eternity (1.2 miles), you come to West 19th Road. Turn left and again cross the highway. As you go east you notice a beautiful flower garden along the road. (Don't pick; they belong to the Fieldhouse family.) This road will eventually run into Tulip Road at Hawks Lake, or Lost Lake, or Little Lake, whichever you prefer. Follow Tulip Road north back toward town. As you come close to the

cemetery, you can pick out your resting place, because at this point you are sure you can't go any farther. Once back on South Main Street, it is all uphill from there. Filled with fatigue, you can rejoice that you can see the bank corner and the completion of your first country trail.



## GARDEN CLUB PLANS ANNUAL FLOWER SHOW AT ROCHESTER

"Visions of Beauty" is the theme chosen for the Annual Standard Flower Show by the Manitou Garden Club.

The show will be held at the First Baptist Church, Rochester, on Wednesday, August 1, from 3:00 to 8:00 p.m. It is anticipated that this will be the Club's greatest Flower Show ever to be staged. The public is invited. Mark the date on your calendar now.

## Our Library

### News About Books

#### NEW BOOKS

#### AT THE LIBRARY

#### ADULT NON-FICTION

Colin Turnbull, The Mountain People—the Ik African Tribe. Ralph and Terry Kovel, The Official Bottle Price List—with over ten thousand current prices. Dona Meilach, Creating Art From Fibers and Fabrics. Anne Morrow Lindberg, Hour of Gold, Hour of Lead—diaries and letters of Anne Morrow Lindbergh, 1929-1932.

#### ADULT FICTION

Edward L. Beach, Dust on the Sea—a new novel of submarines and the men who command them. Robert Silverberg, ed; Other Dimensions—ten stories of Science Fiction. Dorothy Uhnak, Law and Order. James Jones, Touch of Danger.

#### YOUNG ADULT NON-FICTION

Mae Blacker Freeman, The Story of Albert Einstein—the scientist who searched out the secrets of the universe. Howard Liss, More Strange But True Baseball Stories. Franklyn Branley, Pieces of Another World—the story of moon rocks. Amelia Walden, Where Was Everyone When Sabrina Screamed. Iris Noble, Israel's Golda Meir—pioneer to Prime Minister.

#### TEEN-AGE NON-FICTION

Arthur Hughes, Richard M. Nixon. Melvin Berber, Animal Hospital—scientist at work. Tom and Dick VanArsdale, Our Basketball Lives.

#### TEEN-AGE FICTION

Patricia A. McKillip, House on Parchment Street. Dorothy Drayder, She, the Adventuress.

**DON'T FORGET THE LIBRARY BOOK RUMMAGE SALE.**

## ANNUAL CARNIVAL

Sponsored By  
Culver-Union Twp. Fire Department

FIRE STATION  
SATURDAY JULY 28TH

7PM TO ?

GAMES - FUN - ENTERTAINMENT



## ...and GAS did the cooking

CLEAN • COOL • FAST



Automatic Gas Range features make cooking more fun and easier... results are better, more delicious.

You'll find an amazing burner-with-a-brain, a rotisserie, and the wonderful cook-and-hold oven among marvelous work-saving features on today's Gas Ranges.

One of the beautiful, new eye-level models would make an exciting addition to your kitchen.

A new automatic  
GAS RANGE  
gives you a better deal!

Northern Indiana  
Public Service Company





Hair! What to do about it and how and when? Why is it always such a problem? "Should I cut it or not?" you ask yourself staring glumly into the mirror. "Should I shampoo it tonight or can I put it off 'til tomorrow?"

To cut or not to cut! Some of the new shorter styles you see in all the magazines really do look great—so shiny and bouncy, so soft and casual. Stop right there! This is where you come face to face with one inescapable fact: Whether it's long or short or even a happy medium, keeping hair clean, shiny and beautiful can be a problem. Just think of all the abuse your hair takes—curling, coloring, teasing, the heat of dryers and electric rollers. Even just day-to-day living, sun, sea, wind and general weathering take their toll unless you give it special care. And special care means extra steps that make the whole shampooing routine a tedious, time-consuming chore.

But now, at last, there's an easy way! New Wash & Comb shampoo from Noxell, the makers of Noxzema and Cover Girl Makeup, has everything you need to keep hair beautiful in one gentle, loving formula. This unique shampoo discovery is completely different from any other shampoo you've ever tried. It not only cleanses your hair with a rich fragrant lather and rinses out easily and thoroughly, it does much, much more! It actually leaves hair shiny clean, silky soft and...extremely well behaved.

With Wash & Comb you can forget all those other bottles and jars—the conditioners, rinses, body-builders and shinemakers. Forget all those extra steps that usually follow shampooing and rinsing—the pat-dry, pour-on, work-in, wait three minutes, rinse off. This new non-greasy conditioning shampoo does it all.

It gives hair more body, more shine than it normally has. Makes it soft, supple and easy to style, too—just right for today's easy-care hairstyles. And all with just one bottle. Lather up, rinse out... and comb. It's that easy! Wash & Comb is really going to simplify your life—and even save you some money!

Ladies' and Gents' garments repaired, alterations, restyling, cigarette burns, moth damage removed. Albert the Clothes Doctor, North Main near Washington, Culver. Call 842-3513 for appointment.

## WHAT AM I GOING TO DO ABOUT MY HAIR?



There's more, too -- even while wet, your hair will be easier to comb because Wash & Comb also helps to keep hair from tangling. George Fioto, Chief of Noxell's Research and Development Laboratories, explains that a strand of hair, although it looks smooth and uniform to the naked eye, actually has frayed ends and tiny scales along the shaft. During ordi-

nary shampooing, these little rough scales catch onto each other and tangle. Until now you needed conditioners and creme rinses to overcome the tangles. But Wash & Comb smoothes down the frayed rough spots so the hairs don't snag and tangle. No need for extra steps.

Wash & Comb is the perfect shampoo for all kinds of hair.

## Cabinet Specialists



Crews To Install  
\* Complete Kitchens

\* Free Estimates

\* Free Layouts

\* We Repair Windows  
and Screens

\* Special Mill Work

\* Cement

\* Lime

\* Mortar

\* Plywood

\* Lumber

**BABCOCK LUMBER & SUPPLY**  
Culver



# GRETTER'S

"ACROSS from THE BANK"

Phone  
VI-2-  
2262  
**FOOD MART**  
Kustom Kut QUALITY MEATS  
106 N. MAIN ST., CULVER

Fresh Lean

**GROUND BEEF**

lb. **95¢**

Swift's Prem. Proten.

**CHUCK STEAKS**

lb. **\$1.05**

For Barbecuing

**BEEF RIBS**

lb. **69¢**

Lean

**GROUND CHUCK**

lb. **\$1.05**

Weight Watchers

**APPLE SNACKS**

pkg. **19¢**

Richelieu Pieces & Stems

**MUSHROOMS**

3<sup>4</sup> oz. cans **79¢**

Hi-C All Flavors 46 oz. cans

**FRUIT DRINK**

3 for **\$1.00**

Kraft's Colby

**MIDGET LONGHORN**

lb. **\$1.05**

Kreamo Hamburger or Hot Dog

**BUNS**

3 for **\$1.00**

Blue Bonnet

**MARGARINE**

3 lb. **\$1.00**

Debbie

**LIQUID DETERGENT**

qt. **29¢**

Bordens - French Onion Dip or

**SOUR CREAM**

3 for **\$1.00**

## CULVER LIONS 25th Annual CORN ROAST

Culver City Park

**SATURDAY JULY 28** 5 to 8 p.m.

ADULTS \$2.00

CHILDREN \$1.25

COUPON  
8 Pack - 16 oz. Bottles

**PEPSI**  
**79¢**

Expires 7-28-73

COUPON  
DELMONTE CATSUP

2 14 oz. Bottles **49¢**

Expires 7-28-73

COUPON  
Open Pi

**BARBECUE SAUCE**  
**39¢**  
18 oz. bottle

Expires 7-28-73

COUPON  
160 count

**GALA NAPKINS**  
**29¢**

Expires 7-28-73



Legal notice

REPORT OF CULVER COMMUNITY SCHOOLS CORPORATION  
CULVER, INDIANA  
For Fiscal Year Ending  
June 30, 1973

GENERAL SCHOOL FUND:	
Balance July 1, 1972	\$249,152.12
Receipts:	
Local Taxes	962,003.18
Bank Tax	8,914.60
Excise Tax	77,337.21
Rent	2,347.42
Kindergarten and Adult ed. Fees	1,330.50
Transfer Tuition	1,686.37
Congressional Interest	256.14
State Tuition Support	243,388.22
Summer School Support	2,542.32
Transportation Support	21,513.70
Special Education Support	80.00
Vocational Education Support	3,904.00
Insurance Adjustments	1,227.36
Title III NDEA	1,482.19
Sale of Personal Property	1,619.40
Miscellaneous	331.43
Total Balance and Receipts:	1,579,116.16
Disbursements:	
A and A Distributors, Inc.	25.97
Addison-Wesley Pub. Company, Inc.	106.75
Adler's Foreign Books, Inc.	17.95
A. F. Allen	1,002.38
Allied Building Center	97.18
Al's TV and Appliances	8.70
American Air Service, Inc.	155.89
Americana Annual Corp.	23.30
American Assoc. for Health, Phys. Ed.	60.88
American Assoc. of School Adm.	9.88
American Education Publications	150.00
American Guidance Service, Inc.	17.95
American Library and Ed. Serv. Co.	235.24
Amsco L School Publications, Inc.	11.13
Anco Office Equipment	133.85
Appleton-Century-Crofts	15.42
Arco Publishing Co.	4.21
A and R Motors	75.00
Argos Community Schools	31.53
Airkem-Gary	116.90
Arrow Pest Control	28.75
The Athletic Institute	113.70
Audio-Brandon	77.70
Auto License Branch	16.50
Automated Business systems	765.19
Babcock Lumber and Supply Co.	209.58
Baker and Taylor Co.	2,445.24
Dan Baker	166.00
Baker Specialty and Supply Co.	49.58
Bali State Bookstore	31.96
Robert Barnes	111.95
Barnell Loft, Ltd.	21.99
Bearings Service Company	225.99
Beckley-Cardy Co.	323.67
Winfield W. Behmer	35.00
Bennett's Plumbing and Heating	273.84
G. W. Berkheimer Co.	109.91
Arthur Birk (Art's Custom Service)	4.00
Dick Blick	260.53
Blackburn Tire and Alignment Shop	14.00
Bob's Electric, Inc.	379.58
Bob's Merrill Co.	5.69
Boiler and Pressure Board	85.00
Borg-Warner Corporation, York Div.	1614.80
R. R. Bowker Company	39.50
Boxberger's	5752.03
A. E. Boyce, Inc.	354.20
Bro-Dart, Inc.	690.03
Buckeye Feed and Supply, Inc.	725.20
Bumpa-Tel, Inc.	59.71
Burke's Audio-Visual	1401.39
Burr Oak Hardware	77.47
Charles F. Byfield	1010.23
Nancy Byfield	28.00
Boetsma Home Furnishings	14.80
Ray Burch	60.00
Carpenter Sales and Service	10200.00
Culver Comm. High	
School Cafeteria	13.25
The Culver Inn	702.84
Carolina Biological Supply Company	222.45
Cass Hudson Company, Inc.	90.00
Children's Press	13.95
Chicago Tribune	31.92
Chimney Engineering Service	1200.00
Cincinnati Floor Company, Inc.	118.00
D. Richard Claassen	152.08
Clarke Sanding Machine Co.	61.00
Collier-Macmillan School & Lib. Service	210.05
Commercial Parts and Service	281.36
Congressional Quarterly, Inc.	15.95
Courier Newsom Express	10.77
Cran Barry	67.65
Creative Publications	18.50
Creative Hands Co. Inc.	218.35
Donald A. Cultice	60.40
Culver Community H.S.	22.62
Culver Auto Supply	95.39
The Culver Citizen	309.02
Culver Clinic G.W.	
Stevenson, Jr. D.O.	15.00
Culver Hardware	250.73
Culver Postmaster	1009.60
Culver Sheet Metal Works	5.75
LeRoy Davis	64.95
Demco Educational Corporation	153.30
Denoyer-Geppert	147.68
T. S. Denison and Company, Inc.	24.69
Denton Electric Co., Inc.	105.00
A. B. Dick Products Co.	
of So. Bend, Inc.	375.50
Diversa Sales Co.	523.55
James Doty (Doty's Electric, Inc.)	788.65
Door Closer Supply Co.	35.05
Doubleday and Company, Inc.	80.00
George DuBow Agency	20.00
Dust-Tex Service Division	111.40
Dyna-Kleen Power Cleaning Service	105.00
Easterday Construction Company	4234.17
Eastern Pulaski Community School Corp.	630.50
Phil Eber	3000.00
EBSCO Subscription Services	270.60
The Economics Press, Inc.	46.89
The Education Digest	4.95
Educators Progress Service, Inc.	148.91
Ed-U Press	7.40
Eisenhour Siding	3550.00
Electronic Service Co.	366.00

Encyclopaedia Britannica	
Educational Corp.	32.15
Constance Ervin	235.58
Lee Eskridge	9.00
Anna Faulstich	5.12
Charles Fear and Sons	19.90
Carl Fischer of Chicago	456.35
Helen Friesen Fisher	19.76
Harold I. Fitterling	100.54
Field Enterprises Educational Corp.	596.30
Francis Fishburn	67.50
Follett Library Book Company	652.97
Oliver Ford Sales	28.10
French Lick Sheraton Hotel	106.00
Frontier Press	
Distributing Company	82.50
The Fuller Brush Company	153.30
Galbreath Incorporated	10.00
Gates Chevrolet Corporation	3.47
Gaylord Bros. Inc.	116.08
Gothem Educational Equipment Co., Inc.	118.85
Glidden-Durkee Paint Co.	1158.60
Gordon's Texaco Service	191.40
W. W. Grainger, Inc.	90.78
Gretters Market	927.81
Grolier Educational Corp.	313.15
Wilma Grosvenor	500.00
Guidance Associates	241.50
Hammond and Stephens Co.	116.39
Harcourt Brace Jovanovich, Inc.	56.09
John R. Hayes	267.16
Gladys Hartman	40.00
Al Hartz	5.50
Hatten Motor Sales	2523.94
Hand K Disposal	30.00
The Heckman Bindery	24.03
Hiatt Electric Co.	805.64
Hiatt Hardware	105.30
The Highsmith Company, Inc.	36.08
Hoosier Book and Supply Co. Inc.	155.25
Holloway's Electric Motor Service	14.50
Honeywell, Inc. Commercial Division	50.85
George Hopple Trucking	159.42
Houghton Mifflin Company	1241.08
Horace Mann Insurance Company	15730.32
Frank Howard	71.75
Barbara Hughes	28.00
Huntington Laboratories	320.10
Imperial Equipment Company	4342.60
Indiana Association of Public Sch. Supt.	65.00
Indiana Bell Telephone Co.	3501.61
Indiana Press, Inc.	20.00
Indianapolis Star	36.40
Indiana Achool Boards Association	508.75
Indiana State University	11.00
Inland Chemical Corporation	44.80
International Business Machines Corp.	2255.70
Interstate Printers and Publishers, Inc.	6.62
Jackson Engineering Company	67.55
Thomas Jaquish	8.65
Johnson Service Company	2055.63
Josten's	284.83
Naomi Kaiser	149.72
Shelton Kaiser	314.98
Kalamazoo Printing Machinery Company	171.98
Kelso School Supply Co.	189.70
Kerlin Bus Sales and Service	110.39
Kiger and Company, Inc.	2090.03
King School Equipment	754.80
Koontz Wagner Electric	135.60
Douglas Kucera	45.00
Jim Labas Chevrolet	5.50
Laketon Asphalt refining, Inc.	36050.47
Michael F. Deery	192.00
LaPine Scientific Co.	262.64
Langfeldt and Payne	147.77
Orville D. Large	42.44
Learning Today	6.00
Jim Lease Office machines	126.40
P. J. Leonard	10.00
Eva Lebo	100.00
Lee School Supply Co., Inc.	219.03
Leo's Tractor Sales	284.00
Leonard Supply Company	69.95
Lifton Educational Publishing	10.98
Frank Lipps, Inc.	155.00
Lock Music Shop	180.00
Dale Long	220.80
Louderback Chevrolet	16.76
Mahler's Blacksmith Shop	27.63
Maiben's	57.58
Malcolite Corporation	102.12
Markley Well Drilling	85.00
Mark's Cardinal Service	122.55
Marshall County Fire Equipment	152.15
Marshall County Farm Bureau Coop. Ass'n. Inc.	6.00
Marshall County Shopper	2.94
Martin Murray Corporation	280.89
Master Hardware	490.44
Measel's Marathon	426.75
Charles E. Merrill Publishing g Co.	12.59
William Milbrath	10.00
William F. Mills	580.52
Midwest Shop Supplies	61.62
Modern Binding Corp.	1112.77
Moellering Supply Co. Inc.	871.97
The Mogul Corporation	1350.98
Monterey Lumber Co.	37.40
Montgomery Ward & Co.	93.53
Clayton Moon	210.24
Moore-Cottrell Subscription Agencies	198.85
C. L. Morris Lumber Company	195.22
MacAllister Machinery Co. Inc.	2437.25
Larry O. McCollough	433.88
Frank McGovern	10.00
McGraw Hill Book Co.	12.17
McKinnis Pharmacy	12.58
McMahan O'Connor Construction Co. Inc.	45.09
Nash's "66" Service	1.10
National Computer Systems	35.40
National Exterminators	105.00
National Mill Supply, Inc.	1186.75
National Research Association	5.25
National School Boards Association	48.00
National School Public Relations Assoc.	14.28
National Study of School Evaluation	22.40
National Textbook Co.	14.05
John Nelson	85.00
North Central Assoc. of Colleges and Secondary Schools	125.00
Northern Gases, Inc.	399.24
Northern Indiana Public Service Co.	13359.90
The O'Brian Corporation	139.83

Office Engineers, Inc.	95.27
Osborn Seed Company	23.50
Overmyer Servisoff	377.75
Allen Palmer, M.D.	5.00
Park N'Shop	635.45
Parker Publishing Co. Inc.	9.87
Passon's Sport Center, Inc.	102.90
Paxton-Patterson	360.55
Petty Cash	86.03
The Pilot News	10.13
All Plastics, Inc.	329.95
Plymouth Clean Towel Service	40.00
Plymouth Community Schools Corporation	13918.67
Plymouth Glass and Paint Co.	275.46
Plymouth Office Supply	49.67
Plymouth Tire Company	65.32
Poppe's Appliance	546.95
Power Plus Corporation	11.57
Precision Metal Workers Corp.	112.20
The Psychological Corporation	44.70
P. T. C. O. Bus Committee	798.00
Public Employees Ref. Fund OASI	9,234.79
Ramsey News Company	186.72
Randy's Body Shop	105.50
Red Cross Association	140.00
Retco Alloy Company	68.92
Reynolds Judah and Company, Inc.	255.60
The Ridge Company	69.77
Rigsbee Supply Co.	1287.86
John Ringen and Sons	1075.57
Rochester Germicide Company	428.25
The Rochester Sentinel	388.04
Royal Typewriter Company of So. Bend	1439.85
Ruhnnow L.P. Gas	220.38
Dick Sanburn, Inc.	2439.09
Sax Arts and Crafts	635.29
Sargent Sowell, Inc.	27.32
Sargent-Welch Scientific Company	100.04
Scholastic Magazines	132.40
School Health Supply Co.	618.98
School Specialty Supply, Inc.	100.56
Science Research Associates	143.45
Scott Foresman & Co.	24.99
Shemberger's Music, Inc.	414.80
Shepherd's Sales and Service Inc.	305.66
James Sellers	20.37
Leon Sims	5.00
Don Stark	1.80
John Strucker	4.78
Simon Brothers	2998.98
Sims Printing Company	593.20
The Singer Company	30.70
Singer Society for Visual Education, Inc.	41.92
Skil Corporation	32.25
Smith Corona Marchant	45.00
Snyder Motor Sales	7891.72
South Bend Supply Co.	1221.97
Spencer Gas	70.98
St. John Business Machines	1249.82
STAFCO Steel Tank & Fabricating Corp.	4.65
Standard Electric Time Corp.	354.75
Standard Oil Company	11368.11
State Exchange Insurance Agency	18679.00
Stevens, Wampler, Travis & Fortin	1520.40
Stockberger Trucking	16.00
Southwestern Publishing Co.	150.53
Sunbeam Corporation	10.00
Tedelyne Post	151.48
Texas Refinery	250.97
Keith Thomas Sunoco Service	496.96
Thompson Clinic	6.00
Erma Jean Thompson	7.20
L. L. Tousley	43.50
Town of Culver	8317.93
Town of Monterey	100.00
James Turner	126.00
United Heating and Plumbing, Inc.	49.30
United Telephone Co. of Ind. Inc.	617.43
Universal Chemical Co.	963.76
Universal Education and Visual Arts	50.00
Valiant Instructional Materials Corp.	99.48
Van Ausdall and Farrar, Inc.	2116.00
Van Horn Ford Mercury	19535.82
Wabash Electric Supply, Inc.	657.28
R. B. Walters	3.65
Weiman Pump Mfg. Co.	63.74
Weisberger Bros. Inc.	7.40
Angela Wenino	49.94
What's New in Home Economics	12.00
Dr. Joseph Wick	150.00
Wick's Air Filter Service	473.47
H. H. Wilson Company	88.50
Barbara Winters	71.05
Workbench Magazine	1.50
World Traveler	2.50
James Zehner	184.00
Zehner's Arco Service	4097.11
Russell Zentz	55.00
William Harris	174.93
George Hodges	18.10
Dick Hopkins	150.00
Keims Variety Store	12.10
Doris Kepler	6.50
Cecil Lucas	70.00
Midwest Specialties Co.	6.20
Dennis Mishler	10.00
Pulaski County Journal	6.75
TicToc Trophy Shop	50.00
Three Sisters Restaurant	117.07
Dan Adams	7850.00
Jerry Anderson	8550.00
James Allen	8590.00
Bennie Bair	11060.00
Linda Barnes	7975.00
Robert C. Barnes	8675.00
Marian Baker	7900.00
Ruth Barton	9550.00
Charles F. Byfield	16994.82
Marilyn Coby	9730.00
Vickie Lynn Dearth	8200.00
Judson Dillon	11280.00
Mary C. Delancy	7525.00
Linda Elkin	8269.46
Jeanne Epley	11180.00
David Frettinger	11035.00
Shirley Frettinger	10110.00
Phylliss Fields	8675.00
Charles G. Fisher	11220.00
Helen Friesen Fisher	10110.00
Michael Fitch	6055.00
Walter Goonick	12582.00
Raymond Gangloff	12139.00
Onda Good	11920.00
Leah Gunderson	9795.00
Bill Garver	10620.00

William Harris	12704.00
Helen Heiser	8278.75
Mary Esther Hinning	10295.00
Philip Hiatt	9185.00
Robert Horban	10295.00
Valerie Hite	9525.00
Barbara Hughes	10125.00
Lois Bess Hand	7450.00
Shirley Hieatt	9465.51
Wanda Howard	7887.98
Thomas Jaquish	8590.00
Naomi Kaiser	9712.00
Shelton Kaiser	12145.00
David Kelly	7800.00
Alice Keller	9550.00
Kenneth Kleinke	7875.00
Cheryl Kleinke	7583.35
Carolyn Kline	10025.00
Nancy Kline	9185.00
Rita Lawson	6248.64
Latham Lawson	11770.00
Linda Loesch	8150.00
Dale Long	12998.20
Leo Lehman	9550.00
Dorothy Manis	10225.00
Janet Maenhout	7625.00
Sandra Middleton	8500.00
Martha Mishler	9740.00
Terry Mishler	11971.00
Neva Mikesell	12145.00
Clayton Moon	9850.00
Kay Dawn Miller	8150.00
William McBeth III	8725.00
Larry McCollough	9803.60
Jane McIntire	9250.00
Leonard McIntire	13860.00
Jerome Bruce Nevins	8960.00
Linda Null	7800.00
John Nelson	14588.50
Kent Perry	12347.50
Edward Pinder	12042.75
Constance Richie	8150.00
George S. Richie	8250.00
Martha Avis Risk	9550.00
Corine Shirrell	12145.00
Paul Schmidt	10845.00
Ruth Shanks	12920.00
Eva Belle Surber	11062.25
Melvin Stevens	9725.00
Janet Turner	8815.00
Carmen Vazquez	11850.00
Angela Wenino	7663.00
Alice Wamsley	8850.00
George Wamsley	8250.00
Janet Weber	8500.00
Michael Weber	8500.00
Veenice White	9550.00
Barbara Winters	10360.00
Leon Welling	9950.00
Bertha May Rust	600.00
A. F. Allen	19500.00
John R. Hayes	16800.00
William F. Mills	15500.00
Marcia Adams	264.00
Mary Allen	48.00
Thomas Bump	588.00
Elaine Burton	828.00
Charles L. Byfield	72.00
Margaret Carter	1219.10
Betty Mannan	24.00
Ruth Gollnick	1213.44
Phyllis S. Kelly	168.00
Patricia Krueger	324.00
Susan Dumbley	1387.40
Nancy Lee	96.00
Guy E. Lucas	72.00
Malinda Lutz	108.00
Priscailla McBeth	1448.20
Janet Moon	3029.25
Mary J. Moudy	163.89
Beatrice Moseng	120.00
Lloyd Moseng	192.00
Diana Poppe	24.00
Mary Radawski	147.00
Naomi Rector	180.00
Evelyn Reinholt	204.00
Lowell Ritter	24.00
Charles Roush	24.00
Jean Williams	1956.00
Sherilyn Lee Skinner	2583.01
Bertha May Rust	600.00
Lynn Mishler	300.00
Mildred Hohman	6.37
Constance Ervin	6055.00
Wilma Grosvenor	6370.00
Elizabeth Allen	105.80
Margaret Jewell	2650.46
Gillian Richmond	1620.00
Irene Lane	3



# Advertising By Classification

Continued From Page 11

Bids shall be submitted on Indiana State Board of Accounts Form No. 95, copies of which may be obtained from the Clerk-Treasurer, all parts of which shall be properly filled out, and accompanied by a bid bond or certified check in an amount of not less than 5 percent of the bid.

The Board of Trustees reserves the right to reject any and all bids or to waive any informalities in the bid and to accept the bid which in its judgment will be to the best interest of the Town of Culver, Indiana.

**CULVER TOWN BOARD OF TRUSTEES**  
**MARIZETTA KENNEY,**  
Clerk-Treasurer  
July 19, 26

**NOTICE OF HEARING ON FINAL ACCOUNT STATE OF INDIANA MARSHALL COUNTY ss: IN THE MATTER OF THE ESTATE OF ELIZABETH WATSON, DECEASED**

In the Marshall Circuit Court, Estate No. 8394.

Notice is hereby given that the undersigned personal representative of the above captioned estate, has presented and filed: A final account in final settlement of said estate and petition to settle and allow account, and that the same shall be heard in the court room of said Court on the 9th day of August, 1973, at which time all persons interested in said estate are required to appear in said Court and show cause, if any there be, why said account should not be approved. And the heirs of said decedent and all others interested are also required to appear and make proof of their sheirship or claim to any part of said estate.

\*\*\*

Grace L. Reinhold  
Personal Representative  
Joanne P. VanDerWeele  
Clerk of the above captioned Court  
W.O. Osborn  
Attorney for Estate

Restoration of ladies' and gents' garments, including furs, suede, etc. Reweaving of damages, or repairing damages inconspicuously. Specialized service.

Note: My work is so secret, I don't even know what I'm doing. Smile - Albert the Clothes Doctor.

**Service News**

**TRUSTY COMPLETES BASIC TRAINING**

Marine Pvt. Donald Trusty, son of Mr. and Mrs. John Trusty of Route 1, Culver, Ind., has completed infantryman training at the Marine Corps Base at Camp Pendleton, California.

Free Classified!

SUBSCRIBE NOW!

Receive A Certificate For A FREE 25 Word Classified Ad!

Beginning with this issue, and continuing through August 15th, every new subscription or renewal to the Culver Citizen will allow the subscriber one free classified advertisement for one week.

When the Citizen office receives a renewal or new subscription, a certificate will be mailed to that person. The certificate will allow the person to place a free classified up to 25 words for one week. The certificate will be valid for 30 days.

Individuals who make use of this offer will guarantee year-round enjoyment by receiving the new Citizen, and will have an opportunity to benefit from the added circulation of the first four issues under new management by having more readers see their free classified.

## SUBSCRIPTION ORDER

NAME

ADDRESS

STATEZIP

P.O. BOX 90 - Culver

SUBSCRIPTION RATES.	
INDIANA	3 Months \$1.25 - 6 Months \$2.25 - One Year \$4.00 - Two Years \$6.50
OUTSIDE	3 Months \$1.50 - 6 Months \$2.50 - One Year \$4.50 - Two Years \$7.00

**"KNOW YOUR INDIANA LAW"**

By  
John J. Dillon,  
Attorney at Law

(This a public service article explaining in general terms a provision of Indiana law. Individuals who wish to determine the effort of any law upon their private legal affairs should consult a private attorney.)

### "MORTGAGE PROTECTION INSURANCE"

Any person of average, or even above average, means should consider the availability of mortgage protection insurance. Although it is described in many different terms mortgage protection insurance is still a life insurance contract, generally of the decreasing term variety, written on the life principal obligor of the mortgage to pay the balance of the mortgage, when ever it might be, on the death of the principal obligor. From this simple contract the relentless imagination of the various insurance companies has provided many different varieties of this basic plan. This type of insurance is generally sold by the financial institution ro it's representative that has provided the mortgage in question.

Not all financial institutions provide mortgage protection in conjunction with the providing of the mortgage. If this be you particular case, your individual insurance agent can through his sources undoubtedly write mortgage protection insurance. In addition to the principal wage earner, mortgage protection insurance can also be provided on the wife, if it is so desired by the persons obtaining the mortgage. In

addition to life insurance, health and accident insurance can likewise be obtained to guarantee payment of a mortgage. These policies generally provide that the payments will be kept up by the insurance company in the event of disability causing the principal wage earner to be unable to earn his normal livelihood thus preventing the mortgage from going into default for lack of payments.

Since decreasing term insurance written against the period for which the mortgage is made will go out of existance at the end of the mortgage, it is only of temporary nature and has no cash or permanent value as many other types of life insurance. If it is a continuing value that you are looking for then you should approach your insurance agent and insure the maximum amount of the mortgage on your home by taking out an ordinary life insurance policy in the amount of the mortgage and by paying the same will have a continued asset even after the mmortgage is paid off. Many proponents of this type of insurance argue quite forcefully that this not only protects the family in the event of the death of the person responsible to pay the mortgage but gives continuing value even after the mortgage is paid.

The benefits provided by mortgage protection insurance are not only available to insure the payment of real estate mortgages but also to pay off chattel mortgages in the event of the demise of the obligor, for example life, disability and accident insurance is generally available to pay off any obligations such as a loan on an automobile or mobile home or other valuable assets which might have an

outstanding obligation ixisting at the time of the death of the person responsible to make the payment.

All of these alternatives with reference to protecting one's estate through the use of insurance should be considered. It is very important for the average person to take a little time and sit down and analyze the extent of one's obligations and whether adequate protection is available in the event the principal wage earner is unable through ddeath or disability to make the continued payment.

Copyright 1973 by John J. Dillon



### MIDSHIPMEN TO TOUR GREAT LAKES NTC

The first class Midshipmen of the Culver Summer Naval School will travel to Great Lakes, Ill., to tour the Naval Training Command on Friday, July 27th.

The tour, which will last one day, will be highlighted by a ride aboard a Naval PTF fast patrol boat, which has a design similar to a PT boat. Also included on the Middies' agenda is a graduation parade at the Recruit Training Command and a briefing on the Naval Academy and the NROTC program.

Similar tours were discontinued several years ago, when the Navy pulled all of its ships out of the Great Lakes area. Recently, Coastal River Division 21 moved its base to Great Lakes, which has made it possible to resume tours.

### HOMECOMING AT CULVER SUMMER SCHOOLS

Culver's Summer School alumni will arrive on campus this weekend for a homecoming weekend full of fun, recreation and relaxation.

The alumni, representing over 36,000 students who have attended the Culver Summer Schools, will join with their families and the usual throng of parents visiting their children for a three-day program of activities.

Former students will compete in a golf tournament, a sailing race on Lake Maxinkuckee and the demands and rigors of the Dolphin and Tinny Minnie Awards program. These awards are earned after the alumnus has shown that he is still proficient in the skills he learned at Culver.

The School of Horsemanship will give polo and rough riding exhibitions in the Riding Hall, and the Black Horse Troop's Lancer Platoon will perform on the Riding Hall Terrace. The Lancers specialize in a "musical ride," performing intricate maneuvers at the trot and gallop to musical accompaniement.

Woodcrafters will conduct a Council Fire at 8 p.m. Saturday at the Council Ring. The youngsters will don elaborate and colorful costumes for an authentic Indian story. At 8:30 p.m. the formal ball will begin in the Recreation Building.

The weekend is climaxed at 6:30 p.m. Sunday with a garrison parade on the Riding Hall Terrace. Students from each of the Summer Schools participate in the photogenic spectacle.



# Weekend Traveler

## PLACES TO GO TO EX-CAPE FROM THE HEAT!

July and August traditionally have been hot, humid months in the Midwest and this year probably will prove to be no exception. When the hot weather hits the area, the Chicago Motor Club-AAA suggests the following destinations as possible short vacation spots for those longing to escape from the heat, but still wishing to enjoy a sunny holiday. Citizen readers should consider the following short trip ideas:

1. Mackinac Island, Upper Peninsula, Michigan—Once ruled by both the French and British and now a famous resort community, the island is three miles long and two miles wide. Transportation on the island is by carriage, bicycle or horse; no motorized vehicles are permitted on except for a public utilities truck, a fire truck and an ambulance. Facilities for all summer sports are available including a yacht harbor and golf course. The island is accessible by boat from St. Ignace or Mackinaw City.

2. Manitowish Waters, Wisconsin—A popular summer vacation center of U.S. 51 in northern Wisconsin, Manitowish Waters lies in a beautiful setting of woodlands and lakes in the Northern Highland State Forest. The Manitowish Waters chain of 10 lakes in the Northern Highland State Forest. The Manitowish Waters chain of 10 lakes offer excellent facilities for swimming, boating and fishing. The area also offers tennis, golf, riding, archery, water ski shows and beautiful scenery. Island and Shore camp-sites accessible only by water are scattered throughout the region.

3. Interlochen National Music Camp, Michigan—Founded in 1923, the camp now enrolls about 1,600 students in the arts—music, art, dance and drama—for eight weeks each summer. The 1,400-acre campus includes two large outdoor concert halls, a theater, an indoor auditorium and a large complex of classroom building. Concerts, plays, ballets and other performances are scheduled Tuesday through Sunday during July and August.

4. Chautauqua National Wildlife Refuge, Illinois—Located on the Illinois River bottoms near Havana, the wildlife refuge covers 4,474 acres. The refuge has an observation tower, nature trails and a lake which provides excellent fishing. The park is open daily. Also near Havana is Dickson Mounds Museum with a display of 230 prehistoric Indian burial mounds excavated in 1929.

5. Pokagon State Park, Indiana—This 1,175 acre Hoosier park is five miles north of Angola on U.S. 27 on the shores of Snow Lake and Lake James. The park is inhabited with deer, elk and

buffalo. Facilities are provided for boating, swimming, horseback riding, archery, tennis and other favorite sports.

6. Shawnee National Forest, Illinois—In the Shawnee Hills of southern Illinois, this 242,000-acre forest extends from the Mississippi River eastward to the Ohio. In contrast to the level checkerboard of central Illinois, this region is covered with a rich growth of pine, oak and hickory. Recreation facilities include areas for camping, fishing, swimming, hiking, boating and picnicking. Nearby towns include Carbondale and Harrisburg.

7. Isle Royale National Park, Upper Peninsula, Michigan—Isle Royale, the largest island in Lake Superior and the second largest in the Great Lakes is one of the few remaining wilderness areas of the continental U.S. The island is covered with dense growths of hardwood and coniferous trees and is carpeted with wild flowers. All travel within the park is on foot or by boat. A volcanic island of ancient origin, the park is known for scenic beauty, fishing and ancient copper mines perhaps antedating the prehistoric workings in Great Britain.

8. Eagle River, Wisconsin—In Wisconsin's northern lake country, Eagle River is a popular all-year resort area with many summer homes and clubs. The Eagle River Chain of lakes is one of the best known in the country consisting of 28 lakes which are interconnected and navigable from end to end. Many recreational facilities are available appealing to travelers with many and varied interests.

9. Muskegon, Michigan—Formerly known as the "Lumber Queen of the World," cutting 800 million board feet of lumber in 1888, Muskegon is the largest city on the east bank of Lake Michigan. Running through this area is the Muskegon River which offers excellent walleyed pike fishing and canoeing. Also numerous lakes and streams are restocked yearly around Muskegon by the Michigan Dept. of Conservation. Muskegon State Park offers

## THE FIRST BIBLE EXPLANATIONS BY BROTHER RALPH KLINEDINST

The two immutable things about God: When you pick up the Bible and claim it is full of contradictions, you had better turn to second Timothy 2:15, which states, "Study to show thyself approved unto God, a workman that need not be ashamed, rightly dividing the word of Truth."

The first immutable part is: God swore by himself that he could not lie.

Second: That he would keep those his Son gave him.

Read Hebrews, chapter 6.

camping, picnicking, hiking trails, boating, fishing and swimming.

10. Chequamegon National Forest, Wisconsin—More than 400 lakes dot the nearly 837,000-acres of this National Forest in north-central Wisconsin. The Chequamegon (sho-WA-mo-gen) timberland consists of hardwood and conifers with extensive pine and spruce plantings. Canoeing is possible on the Flambeau and Chippewa Rivers and the park also has facilities for lodging, camping, picnicking, hiking, boating, fishing, swimming and riding. Nearby towns include Ashland, Eau Claire, Hayward and Superior.

## My Neighbors



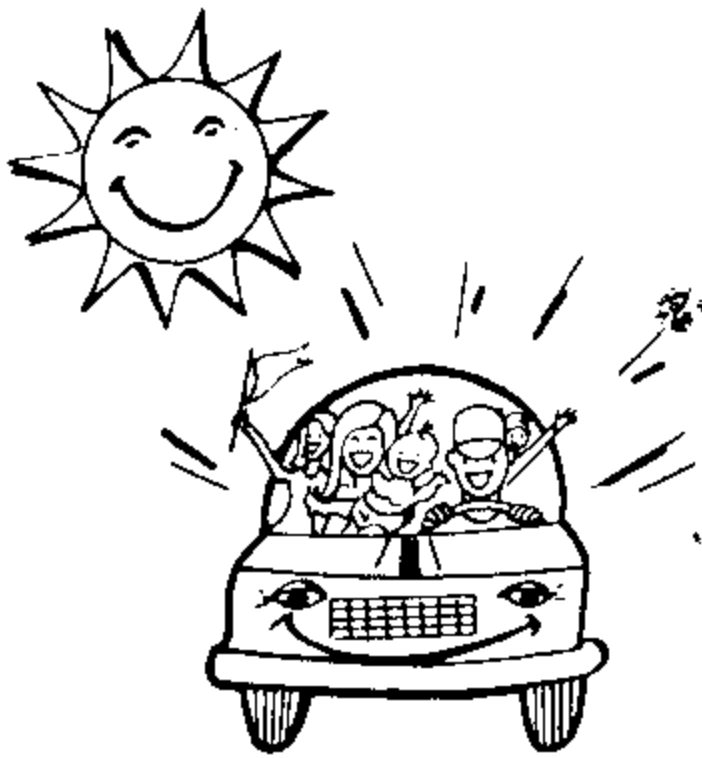
"Look, you can impound all my coupons while I run home and get my money, OK?"

## Summer's Heat And Your Car

There are more than 90 million passenger cars licensed in the U. S. A. as Summer of 1973 begins. With the threat of gas shortages your car needs to be safe for trouble-free driving according to The Chemical Specialties Manufacturers Association. This firm is the spokesman for dozens of leading manufacturers who make products to help keep your auto in the best possible running order.

Good care is no problem today. Car waxes are formulated to take the drudgery out of cleaning and polishing. Chrome cleaners, touch-up paints, upholstery and white wall cleaners in aerosol sprays and carburetor and choke cleaners spray away carbon buildup. Sprays for battery terminals and fan belts, ignition systems and tire inflator.

The eternal question is "How can I prevent my car from boiling over or overheating this summer?" About 90% of all cars have automatic transmissions; more than 2/3 of new cars are factory air-conditioned. You drive faster and may be towing anything—boat, trailer, etc. Car manufacturers recommend ethylene glycol mixtures for your radiator for your car's cooling system. It does three things: 1) prevents freezing in winter; 2) protects against foaming and boilover in Summer and 3) fights corrosion all year.



There is a 12 page booklet "How To Avoid Problems With Your Car's Cooling System". It explains step by step how to flush and fill.

To get this booklet, send a self-addressed envelope and a quarter to cover postage and handling to The Chemical Specialties Manufacturers Association, 50 East 41st Street, New York, N. Y. 10017.



# SUNDAY AUGUST 12 1973

**SALUTE THE FAMILY-  
KEYSTONE OF THE  
NATION'S STRENGTH**

ZECHIEL FARM SERVICE on West Jefferson St. at City Limits offers these quality items at 40% off our regular low price!

	Regular	Now!
Outside White Acrylic Latex Paint	8.29 gal.	4.97
Lead Free White Paint	7.49 gal.	4.49
Ford Tractor E.P. Gear Lube #80	2.46 gal.	1.47
Ford Tractor E.P. Gear Lube #80, 2 gal.	4.71 ea.	2.82
Ford Tractor E.P. Gear Lube #90	2.46 gal.	1.47
Multi-Purpose Gear Lube-GI4 #90	2.68 gal.	1.60
Black Trans. Oil #80	2.09 gal.	1.25
Green Trans. Oil #80	2.09 gal.	1.25
John Deere Green Implement Enamel	2.51 Qt.	1.50
IHC Red Implement Enamel	2.51 Qt.	1.50
Ford Grey Implement Enamel	8.40 Gal.	5.04
White Machinery Enamel	2.51 Qt.	1.50
Black Machinery Enamel	8.40 Gal.	5.04
Case Desert Sunset Implement Enamel	8.40 Gal.	5.04
Ford Blue Implement Enamel	2.51 Qt.	1.50
New Idea Orange Implement Enamel	8.40 Gal.	5.04
Dark Grey Porch & Floor Enamel	8.06 Gal.	4.83
Paint & Varnish Remover	2.24 Qt.	1.34
Paint Thinner	.80 Qt.	.48
1-10 Penta Concentrate	5.46 Gal.	3.27
J. D. 303 Special Purpose Oil	2.51 Gal.	1.50
Lithium Grease 5 lb.	1.77 ea.	1.06
Lithium Grease 10 lb.	3.42 ea.	2.05
Lithium Grease 25 lb.	7.75 ea.	4.65
Lithium Grease 38 lb.	11.79 ea.	7.07
Wheel Bearing Grease	.86 Qt.	.51
Heavy Duty Wheel Bearing Grease	4.07 Gal.	2.44
Thread Cutting Oil	1.00 Qt.	.60
Several models of RAY-O-VAC Flashlights and Lanterns	40% off.	
6 Amp Battery Charger	22.90 ea.	13.74
15 Amp Battery Charger	41.90 ea.	25.14
20 Amp Battery Charger 125/250 boost	79.90 ea.	47.94
Many other items at comparable savings! Prices good through Aug. 3rd.		

## ZECHIEL FARM SERVICE



## GONE BUT NOT FORGOTTEN



**Benjamin Wright  
(1770-1842)**

This great American civil engineer, whom history has largely overlooked, escaped the fate of most men whose "good deeds are often interred with their bones." His good deeds remain for all to see. In fact, all his achievements have earned him the singular honor of "The Father of American Civil Engineering."

Benjamin Wright was born on October 10, 1770, in Wethersfield, Conn. Of pioneer stock, he learned surveying under the tutelage of his uncle. His father, a soldier in the American Revolution, moved his family to the western frontier in 1789, settling near Fort Stanwix (now Rome), New York.

Wright soon established himself as a surveyor in that part of the frontier and when the first canal on the Mohawk river was built in the 1790's, he became the principal American assistant to English engineer William Weston. Known as the Wood Creek Project it was a forerunner of the Erie Canal.

After the War of 1812, obstacles blocking the great plan to connect the Hudson River with Lake Erie were overcome and construction on the 364-mile Erie Canal was begun near Rome on July 4, 1817. Wright, who had made some of the early surveys, was soon appointed Chief Engineer and his contributions to this well-known project established his professional reputation.

The extent of Wright's impact on America's early transportation system is shown by the list of projects on which he was either chief engineer or principal consultant. They include: Erie Canal, New York (1817-1825); Delaware & Hudson Canal, New York and Pennsylvania (1823-1827);

Farmington Canal, Connecticut (1825-1828); Chesapeake & Delaware Canal, Delaware (1824-1829); Blackstone Canal, Rhode Island (1828); Chesapeake & Ohio Canal, Maryland (1828-1831); Welland Canal, Canada (1829); St. Lawrence River Improvement (1832); James & Kanawha Canal, Virginia (1835-1839); and the Chicago-Illinois River Canal (1837). In addition, he helped build railroads in New York, Virginia and Illinois. In association with his son, Benjamin Hall Wright, he was largely responsible for the first Cuban railroad, completed in 1835.

Wright's legacy to America was not only his many projects or the high professional standards he established but also his long-standing practice of sharing his engineering knowledge with others. He was the first professional mentor of many of the leading civil engineers of the 19th century. Among them were John B. Jervis, Canvass White, Charles Ellet, David Bates, and Nathan Roberts.

Recognition of Wright by his colleagues also occurred in 1839, when he was made chairman of the committee to prepare the Constitution of a proposed society of civil engineers, and it was resolved that "the name of Benjamin Wright... be placed at the head of the list (of members)." This society did not achieve permanence, but its successor, the present American Society of Civil Engineers, did.

It was in October, 1968, however, that his professional legatees declared Benjamin Wright to be the Father of American Civil Engineering.

In a very real sense, Benjamin Wright helped expand the frontiers of frontier America. And for this he deserves recognition as a Great American.

# Church Directory

## UNITED METHODIST GROUP MINISTRY

A fellowship of United Methodist Churches in the area south and east of Lake Maxinkuckee.

## LEITERS FORD METHODIST

Leon Welling, S.S. Supt.  
Church School, 10:00 a.m.  
Worship, 11:00 a.m.  
MYF on second and fourth Sunday.

## LEITERS FORD CIRCUIT

Rev. Phillip Lutz, Pastor

## MONTEREY METHODIST

Worship 9:10 a.m.  
Church School 10:15 a.m.  
**Mount Santa Grove Parish**  
Rev. Arthur Bishop  
**Mt. Hope United Methodist**  
Robert C. Kline, Superintendent  
Church School 10 a.m.  
Worship at 11 a.m. every 2nd and 4th Sunday.

## SANTA ANNA

## UNITED METHODIST

Phillip Peer, Superintendent  
Church School 10 a.m.  
Worship 11 a.m. every 1st and 3rd Sunday.

## POPLAR GROVE

## UNITED METHODIST

William Lake, Superintendent  
Church School 10:45 a.m.  
Worship 10 a.m.

## GILEAD UNITED

## METHODIST

Rev. Ray Kuhn, Pastor  
Grover Shaffer, Superintendent  
Worship 10 a.m.  
Worship Service 11 a.m. on 2nd and 4th Sundays.

## THE UNITED

## METHODIST CHURCH

**RICHLAND CENTER—BURTON CHURCH**  
Rev. Curtis R. Sylvester, Pastor  
Phone: Rochester 223-3751

## RICHLAND CENTER

## UNITED METHODIST

## CHURCH

Robert J. Nellans, Lay Leader  
Howard Conrad, Superintendent  
Worship, 9:30 on 2nd and 4th Sunday.  
10:30 on 1st and 3rd Sundays.  
Church School: Alternating time.

## BURTON UNITED

## METHODIST

John Cessna, Lay Leader  
Margaret Belcher, Superintendent  
Worship: 9:30 on 1st and 3rd Sundays.  
10:30 on 2nd and 4th Sundays.  
Church School: Alternating times.  
Methodist Youth Fellowship at 5:30 p.m. Sunday.

## SAINT ANN'S CATHOLIC CHURCH MONTEREY

Rev. Robert W. Sorg, pastor  
Sunday masses: 7:30 and 9:30 a.m.  
Weekday Masses: 8:00 (Winter), 7:30 (summer), 3:30 Saturdays Winter.  
Holy days of Obligation 7:30 a.m. and 7:30 p.m.  
Confessions Saturday 4:00 to 4:30; 7:00 to 8:00; After Sacred Heart Devotions and Nights before Holy Days 7:00 to 8:00.

## TRINITY LUTHERAN CHURCH

Missouri Synod  
Roger L. Sommer, pastor  
330 Academy Drive  
Phone 842-3613  
Sunday worship 9:00 a.m.  
Sunday School 10:00 a.m.  
Sunday School 10:00 a.m.  
Visitors welcome.

## CULVER MILITARY

## ACADEMY

## MEMORIAL CHAPEL

Rev. Calvin R. Couch, Chaplain  
Time of Worship, 11:00 a.m.  
Visitors always welcome.  
**ZION GOSPEL CHAPEL**  
Steven Bradley, Pastor  
Manson Leap, Superintendent  
William Sheridan, Asst. Supt.

Marion Kline, Class Leader  
Lester Wentzel, Lay Leader  
Sunday School 9:30 a.m.  
Morning Worship 10:45 a.m.  
Evening Worship 7:30 p.m. every Sunday.

Evening Worship 7:30 p.m. every 4th Sunday of the month.

Everyone welcome.

## PRETTY LAKE TRINITY

## UNITED METHODIST

Rev. J. C. White, Pastor  
Morning Worship 9:30 a.m.  
Sunday School 10:20 a.m.

## CULVER EMMANUEL

## UNITED METHODIST

Rev. Maurice C. Kessler, Pastor  
Leon Sims, Superintendent  
Church School, 9:30 a.m.  
Worship, 10:40 a.m.

## BURR OAK CHURCH OF GOD

Rev. Darrel Maddock  
Ferris Zechiel, Superintendent  
Stan Reinholt, Asst. Supt.  
Sunday School, 9:45 a.m.  
Worship Service, 10:45 a.m.  
Worship Service 7:30 p.m.  
Hour of Power, Wednesday, 7:30 p.m.  
Holy Communion observed the first Sunday of each month during the morning worship service.

## CULVER WESLEY

## UNITED METHODIST

School - Lewis Streets  
Earl W. Sharp, Minister  
Mrs. Ted Strang, Director of Christian Education  
Worship Service, 9:30 a.m.

## ST. THOMAS

## EPISCOPAL CHURCH

Center and Adams Streets, Plymouth  
Rev. James G. Greer, Pastor  
7:30 a.m. Holy Communion.  
9:30 a.m., Family Eucharist.  
9:30 a.m., Parish Nursery.

## ST. MARY'S OF THE LAKE CATHOLIC CHURCH

"The Church With the Gold Crosses"  
Rev. Joseph A. Lenk, Pastor  
**Winter Schedule (Sept. thru June):**

Saturday Mass, 5:30 p.m.  
Sunday Mass, 8:00 and 11:00 a.m.

## Summer Schedule (July and August):

Saturday Mass, 5:30 p.m.  
Sunday Mass, 7:00, 8:00, and 11:00 a.m.

Daily Mass, 9:00 a.m.

## GRACE UNITED CHURCH

## OF CHRIST

Rev. John Krueger, Pastor  
Church School classes, 9:15  
Worship Service, 10:30

## FIRST CHURCH OF CHRIST SCIENTIST

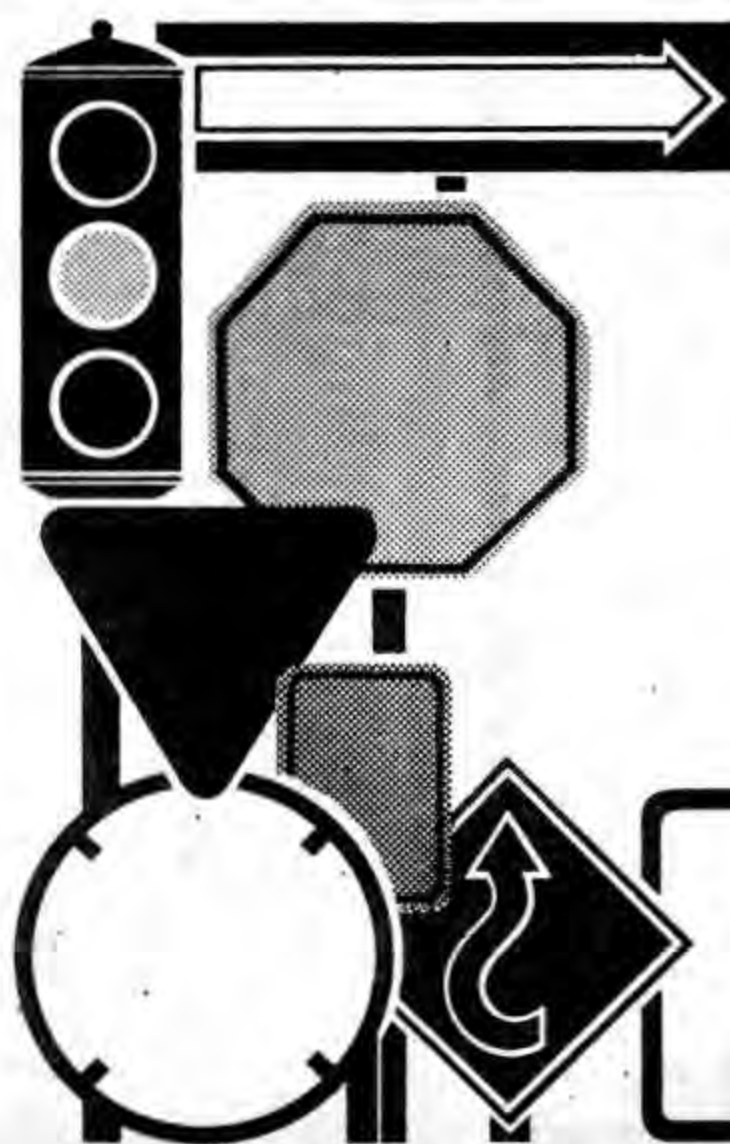
428 So. Michigan St. Plymouth  
Sunday Service 10:30 a.m.  
Sunday School 10:30 a.m.  
Wednesday meeting 7:45 p.m.

Reading Room open at this address, Wednesday and Saturday, 2:00 to 5:00 p.m.

## CHRISTIAN SCIENCE CHURCH NOTES

The subject of the lesson this week is TRUTH: III John 1:4. I have no greater joy than to hear that my children walk in truth. Ps.86:11. Teach me thy way, O Lord; I will walk in thy truth. From the Christian Science Textbook, Science & Health with Key to the Scriptures by Mary Baker Eddy: Mortals try to believe without understanding Truth; yet God is Truth. It is essential to understand, instead of

believe, what relates most nearly to the happiness of being. The truth is the centre of all religion. It commands sure entrance into the realm of Love. St. Paul wrote, "let us lay aside every weight, and the sin which doth so easily beset us, and let us run with patience the race that is set before us;" that is, let us put aside material self and sense, and seek the divine Principle.



JUST ARRIVED AND  
DON'T KNOW WHICH WAY  
TO TURN?

Call

## Welcome Wagon

The hostess in your area will call on you with a variety of helpful community information along with gifts and greetings from local merchants.

Charlene Strang

Telephone 842-2986



## A PICKER-UPPER: A SUMMER SUPPER



Fast fixing food is the order of the day as summertime rolls into view. And a quick one dish supper that can be readied in advance and kept chilled in the refrigerator is a cook's dream come true.

A variety of crisp, cold vegetables add vitamins and color to an antipasto platter. Tasty sardines from Maine are generous with protein and calcium, but easy on the calories.

A 3-ounce serving of Maine sardines provides 20 grams of protein (about 1/3 the recommended daily dietary allowance for adults), 372 milligrams of calcium (more than 1/3 the daily recommendation), and only 175 calories.

Sardines are a natural for summertime suppers. Open the can and they're ready to serve in sandwiches as well as salads. For campers and outdoor buffs, Maine sardines also come in packs that don't require can openers.

## MAINE ANTIPASTO PLATTER

2 cans (4 oz. each) Maine sardines  
Lemon juice  
1 pkg. (10 oz.) frozen green beans  
1 cup bottled blue cheese dressing  
1 1/2 cups drained canned garbanzo beans  
1/2 cup bottled Italian style dressing  
1 cucumber  
1/2 cup vinegar  
1 teaspoon oregano

1. Sprinkle sardines generously with lemon juice; cover and chill.

2. Cook green beans as directed on package till crisp-tender. Drain and combine with blue cheese dressing; cover and chill.

3. Mix garbanzo beans with Italian dressing; cover and chill. Slice cucumber, add vinegar and oregano; cover and chill.

4. At serving time, arrange sardines and chilled vegetables in compartments of relish or antipasto platter.

Makes 4 to 6 servings.

## FIRE! FIRE!



WHERE'S THE FIRE? A small fire at the Jim James residence on East Shore Drive this week called out the trucks of the Culver-Union Twp. Fire Department. As young Mr. James shows here, it is better to be safe than sorry, and little damage was done. There was, however, quite a traffic jam and there were more onlookers than firemen.



## DANCE

Saturday

July 28th

JUNIOR HIGH GYM 9 to 12

\$1.25

Music By

WOMBAT

Sidewalk

DAZE

Dresses (were \$10-\$15) \$5<sup>00</sup>

SKIRTS, BLOUSES (were \$3-\$6) \$2<sup>00</sup>

MEN'S SHIRTS 2 FOR \$5<sup>00</sup> - SLACKS \$5<sup>00</sup>

OTHER BARGAINS INSIDE - GIFT CORNER

OPEN UNTIL 5:30 MONDAY THROUGH SATURDAY

"See You At  
the  
Sale"



Tables  
and Racks..

A Little of  
Everything

shirts  
shoes  
sandals  
slacks

Culver Clothiers

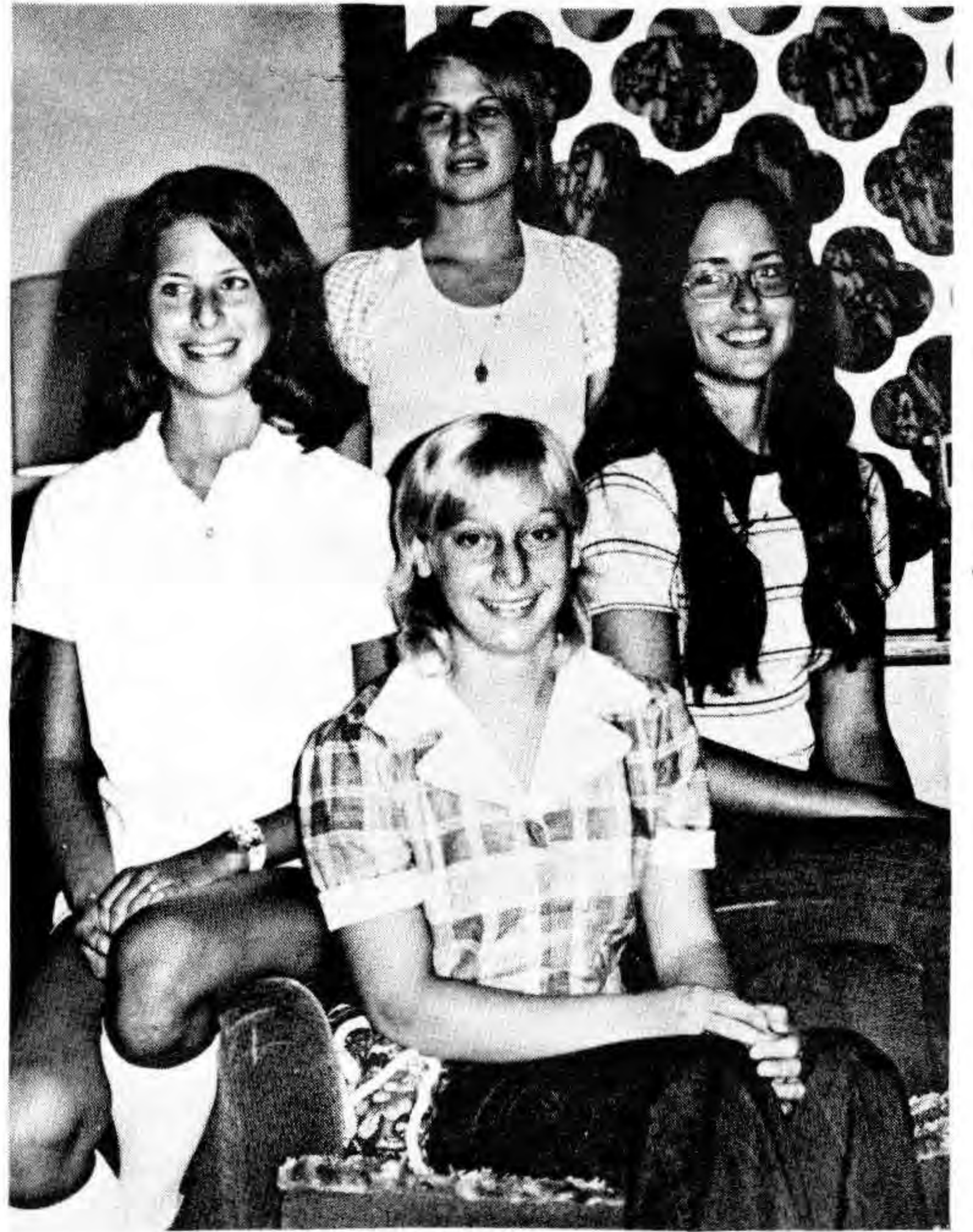
Don Trone's INC.  
CULVER, INDIANA  
"On Beautiful Lake  
Maxinkuckee"





SHOWN HERE ARE THE CANDIDATES FOR THE TITLE OF "MISS MAXINKUCKEE", photographed at an organizational meeting this week. These girls will compete for the title this Friday at 9:00 p.m. at the High School Auditorium. Seated on the couch, from left to right, are Kathy Wolverton, 20; Debbie Keener, 19; Lisa Dinsmore, 17; and Lisa Baker, 16.

## Queen Candidates



Shown here, in clockwise order from 12 o'clock, are Terry Napier, 17; Rosemary Keith, 15; Teena Morrison, 16; and Judy Keith, 18.

CITIZEN photo

# side-walk DAYS



LISTERINE

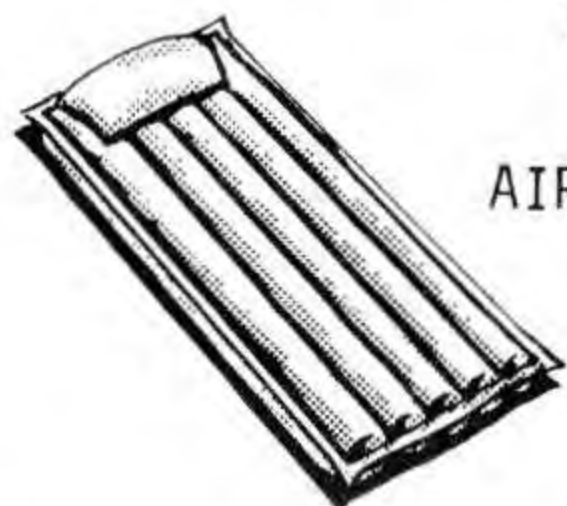
Reg 1.39

NOW 97¢



PRELL CONCENTRATE (5 oz.)

Reg 1.59 NOW \$1.09



AIR MATTRESS

96¢



FIRST AID KITS  
½ PRICE



RIGHT GUARD NATURAL SCENT (5 oz.)

Reg 1.25

NOW 79¢



DRISTAN TABLETS (60's)

Reg 2.59

NOW \$2.59



GELUSIL LIQUID

(12 oz.)

Reg 1.80

\$1.19

**Mr. T's** **Rexall DRUGS**  
PHONE 842-2400 • • • CULVER, INDIANA

**LOTS MORE, TOO**

MANY GREAT BUYS  
WILL BE ON THE SIDEWALK



**COME ON OVER, NEIGHBORS**