

THE CULVER CITIZEN

ON LAKE MAXINKUCKEE • INDIANA'S MOST BEAUTIFUL LAKE

VOLUME 79: NUMBER 19

CULVER, INDIANA, THURSDAY, MAY 10, 1973

TEN CENTS PER COPY

CULVER BOARD NEWS

The Culver Community Schools Corporation Board of School Trustees met in special session on April 24 with the school administration for the final staff evaluation of the current school year. Resignations were accepted from Mrs. Dorothy Manns, Mrs. Linda Elkins, Miss Mary C. Delaney, Mrs. Linda Barnes, Mr. Robert Barnes and Mr. J. B. Nevins to be effective at the close of the current school year, and a resignation from Mr. Michael P. Fitch to be effective April 2, 1973.

The board also discussed arrangements for the three Junior High Schools for the 1973-74 year and more specifically what the teaching arrangements in the fields of music, industrial arts, and physical education would be. Mr. Snyder, acting chairman for the meeting, suggested that the administration work on plans that could be presented to the board recommending arrangements in these areas of instruction at Aubenaubee and Monterey.

For the regular meeting of May 1 there were only three School Board members present. Harold Fitterling, school board member, was in the Parkview Hospital. Following the opening and approval of the minutes of the previous meetings, the superintendent read a letter from Everett Dowd which was addressed to the board and superintendent wherein Mr. Dowd tendered his resignation as a member of the school board effective April 30.

Kenneth Hass, newly appointed basketball coach, was present to present the proposal for a summer basketball clinic to run for three weeks from July 16 to August 2, four days a week, two hours each day. It is hoped that approximately 60 students will be enrolled.

William F. Mills, elementary principal, and Phillip Hiatt, junior high school teacher, were present to report to the board on the proposed change in the method of reporting pupil progress to the parents. Basically the new proposed method of reporting to parents would make use of a skill check method with ratings of "E" for "excellent," "S" for "satisfactory," and "N" for "needs improvement." It was requested that a parent-teacher conference be held in the fall for all of the parents of students in grades K-6. Report cards would be sent home on a nine week basis. After the first five weeks of school a note would be sent to the parent of students who were making unsatisfactory progress. The board approved this proposed method of reporting pupil progress to the parents.

Mr. Mills gave a report on the final details for the 8th grade class trip which is planned for Saturday, May 26.

The board approved the superintendent's request to conduct a 1973 summer school program similar to the program which was run during the 1972 summer school.

The vice-president and secretary of the board signed an achievement test certificate for Mary Anne Raabe Trimble.

The contract for Gene Reese to serve as a health and physical education teacher and as varsity baseball coach was approved by the board.

The board will meet in special session on Tuesday, May 8 with the Teacher Salary Committee.

Following the approval of claims, the meeting adjourned.



Dr. Arthur Krueger
Dr. Arthur Krueger, 63, Sheboygan Falls, Wisconsin, passed away suddenly Sunday afternoon in Wisconsin. He was the father of Rev. John Krueger, pastor of Culver Grace United Church of Christ. Dr. Krueger had presently been serving as pastor of Saron Church of Christ in Sheboygan Falls where he had gone from Lafayette, Indiana, where he served Immanuel United Church of Christ. He had formerly served as president of Lakeland College, Sheboygan Falls, prior to serving the Lafayette Church.

Funeral services were held Wednesday, May 9, at Lakeland College Auditorium, Sheboygan Falls, Wisconsin. Burial followed in Saron Church Cemetery.

Alva C. Savage
Alva C. Savage, 76, route 1, Culver, died unexpectedly of a heart seizure at 11:00 a.m. May 3, at his home after being under a physician's care for a heart condition. He retired in 1962 from the Bendix Corp., South Bend.

Mr. Savage was born March 5, 1897, in Union Township, southeast of Culver to Daniel and Mary Listenberger Savage and lived all of his life in that vicinity. He was married November 1, 1919, at Culver to Pearl Freese, who survives. Mr. Savage was a member of the Poplar Grove United Methodist Church and was a 55 year member of Maxinkuckee IOOF lodge 373 and the East Side Conservation Club.

Surviving with his wife are four daughters, Mrs. Jules (Mary) Graedel, Tustin, Calif.; Mrs. Ralph (Mildred) Simcox, South Bend; Mrs. Robert (Herma) Sanders, South Bend; and Mrs. John (Jean) Lagin, Coldwater, Mich.; five grandchildren; seven great-grandchildren; one sister, Miss Nellie Savage, Plymouth; and one brother, Stephen Savage, Argos. He was preceded in death by four sisters and three brothers.

Services were conducted at 2:00 p.m. Sunday at the Poplar Grove United Methodist Church, with Rev. W. Ray Kuhn, of Plymouth, and Rev. Mark Day, pastor, officiating. Burial was at Poplar Grove Cemetery.

Charles A. Stuprich
Charles A. Stuprich, 60, of Long Beach, Miss., former resident of Culver, died Saturday in the Ochsner Foundation Hospital at New Orleans after an extended illness. He was the district manager of Associates Investment Corp. He was born March 3, 1913, in Chicago and graduated from Culver High School in 1930. He was a graduate of Indiana University Law and had moved 15 years ago to Mississippi. In 1939, in San Antonio, Texas, he married Helen Taylor, who died in 1968. Surviving are a son, Michael, of New Orleans, and a sister, Mrs. George Stevens, of Plymouth.

The body was returned to the Bonine Funeral Home, Culver, where services were conducted at 2:00 p.m. Wednesday, with Rev. Earl W. Sharp, pastor of Wesley United Methodist Church. Burial followed in Culver Masonic Cemetery.

Infant Salyer
Services for infant Russell Salyer Jr., seven day old son of Mr. and Mrs. Russell Salyer, Culver, who died at 7:05 p.m. Friday, at South Bend's Memorial Hospital, were held at the Caudill Funeral

New Office Manager At Culver Citizen

Mrs. Clarence William Epley III, 413 North Slate Street, Culver, is the new office manager of the Culver Citizen office, 103 S. Main Street. Becky is from Franklin, Indiana, where she graduated from Franklin Community High School and attended Franklin College where she majored in journalism and political science.

Becky will be glad to help you when you enter our office either with advertising, submitting news, local tid-bits, subscribing to the paper, etc. She is open to suggestions as to what you would like to see and read in your local paper.

Mrs. Epley replaces Mrs. Ron Mackey who had this position for over five years.

Home, Salyersville, Ky., with burial at the Bee Tree Cemetery, Carver, Ky.

Surviving with his parents are his paternal grandmother, Mrs. Meda Pitts, Jackson Ky.; his maternal grandmother, Nancy McFarland, and maternal grandfather, Francis McFarland, both of Culver; his great-grandmothers, Esther McFarland, Plymouth, and Naomi Fishburn, Culver; and his great-great-grandmother, Flossie Ramsey, at the Plymouth Nursing Home.

Jack Andrew Davidson
Jack Davidson, 17, Leiters Ford, died at South Bend Memorial Hospital at 4:07 p.m. Saturday of injuries suffered at 11:45 a.m. when his motorcycle collided with a car at the intersection of Indiana 10 and new Indiana 17, just west of Culver. He was born June 2, 1955, at Rochester to Paul and Rosemary Ault Davidson. He was a member of the class of 1973 at Culver Community High School and a member of the Leiters Ford United Methodist Church. He was an Eagle Scout in the Leiters Ford Boy Scout troop and 457 and a recipient of the God and Country award.

Surviving with his parents are two sisters: Laura Davidson, of Bloomington, and Paula Davidson at home; and his maternal grandmother, Mrs. Joseph O. Ault, Rochester.

Services were conducted at 2:00 p.m., Tuesday at the Leiters Ford United Methodist Church with Rev. Philip Lutz, pastor, officiating. Burial was at Leiters Ford IOOF Cemetery.

L. Wayne Holifield
L. Wayne Holifield, 64, 210 S. Ohio Street, Culver, died at 12:20 a.m. May 3 at his home, following an illness of several years. He was a retired truck driver.

Mr. Holifield was born July 25, 1908, at Rector, Ark., and had lived at Culver since 1949. He was married August 30, 1940, in Missouri, to Heienglen Kennedy, who survives. He was a member of St. Thomas Episcopal Church, Plymouth.

Surviving with his wife are one son, Rev. Lloyd W. Holifield, Salina, Kan.; one brother, Rev. E. J. Holifield, Little Rock, Ark.; one sister, Mrs. James (Claudine) Klepfel, Kansas City, Mo.; and his mother, Mrs. Florence Holifield, Kansas City, Mo.

Services were held at the Culver Military Academy Memorial Chapel with Rev. James G. Greer, pastor at St. Thomas Episcopal Church, Plymouth, officiating. Burial was at Culver Masonic Cemetery.

Poppy Days Set For May 18 & 19

May 18 and 19 are the National Poppy Days for 1973 in Culver and Union Township. On those days members of the American Legion Auxiliary will be on the street corners offering to the public the bright red wildflowers which were so prevalent in the fields of France during World Wars I and II. These poppies are hand made by the disabled veterans at the Veterans Hospitals. These veterans benefit not only through the rehabilitation from the poppy funds but also from making the poppies.

The Culver Legion Auxiliary thanks you, in behalf of all the disabled veterans, for any contributions you care to make.

Please make checks payable to Mrs. Ruth Brown, treasurer of the local American Legion Auxiliary, Unit No. 103.

SPRING MUSIC PROGRAM HERE MAY 17

The music department of the Culver Elementary Schools will present their Spring Music program on Thursday, May 17, at the Culver Elementary Gymnasium at 1:45 p.m. Grades K, 1, 2 and 3 will participate. The junior choir and sixth grade, under the direction of Clayton Moon and Miss Linda Elkins, will also perform.

The public is invited to attend this yearly event.

RECENTLY ADMITTED TO PARKVIEW HOSPITAL:

Mrs. Herbert Washburn, Mrs. Doris Davidson and Master Rodney McAllister, of Culver, DISMISSED:

Mrs. Emma Ewigart, Mrs. Doris Davidson, Mrs. Herbert Washburn, Miss Florence Page, Mrs. James Allen and son, Jesse Abraham, and Mrs. Kevin Cooper and daughter, Heather Lynn, all of Culver.

CULVER CALENDAR FOR THE WEEK

- Thursday, May 10**
- Culver track team to travel to LaVelle.
 - 7:30 p.m. — Grace Church, Circle IV.
 - 7:30 p.m. — Wesley United Methodist Women in Fellowship Hall.
 - 8:00 p.m. — Culver Jaycees in bank lounge.
 - 8:00 p.m. — Maxinkuckee IOOF No. 373.
 - 8:00 p.m. — American Legion business meeting.
 - 8:00 p.m. — Hibbard Circle.
- Friday, May 11**
- Culver golf team vs. Knox and Winamac at Hamlet.
 - Culver baseball team at Triton.
 - 2:00 p.m. — King's Daughters Class of Emmanuel Church.
- Monday, May 14**
- Culver baseball team at Rochester.
 - 6:30 p.m. — Maxinkuckee Jr. Women's Club at Grace Church.
 - 7:30 p.m. — Maxinkuckee Rebekah Lodge No. 844.
 - 7:30 p.m. — Daughters of Ruth of Culver Bible Church.
 - 7:30 p.m. — Golden Rule Builders Class of Emmanuel Church.
- Tuesday, May 15**
- Culver track team vs. North Judson here.
 - 1:00 p.m. — Senior Citizens Recreational meeting.
 - 7:30 p.m. — Order of Eastern Star, Masonic Hall.
 - 7:30 p.m. — School Board of Culver Community Schools Corp.
 - 8:00 p.m. — Golden Key Home Demonstration Club.
 - 8:00 p.m. — Father's Auxiliary to VFW Post 6919.
- Wednesday, May 16**
- Culver baseball team vs. Bremen, there.
 - 7:30 p.m. — Crescent Group of Grace Church.
 - 8:00 p.m. — Eagles Lodge.
- Thursday, May 17**
- Culver track team to participate in Sectional.
 - Culver golf team vs. Oregon-Davis, here.
 - 7:30 p.m. — Wide Awake class of Wesley Church.
 - 7:30 p.m. — WSCS of Emmanuel Church.
 - 7:30 p.m. — Culver Masonic Lodge.
 - 8:00 p.m. — Maxinkuckee IOOF No. 373.
 - 8:00 p.m. — Burr Oak Rebekah Lodge.

Beach Lodge To Open May 26

Announcement has been made by the Culver Park Board that the Beach Lodge will be opened on May 26 for public use.

Season beach passes will be sold at the Culver Town Hall on May 12 and 19 from 12:00 noon until 5:00 p.m. Prices are \$1.00 for those within the city limits, \$3.00 for those within the school corporation and \$5.00 for those outside the school corporation.

Distribute New Telephone Directories

A new telephone directory for Culver and vicinity will begin arriving at homes and business places next week.

Dudley Burgess, the Indiana Bell manager, said the delivery of the new books should be completed by the following week end. He said about 2700 of the new directories will be delivered, most of them by U. S. Mail.

The directories' cover has a full color picture of a covered bridge nestled in a woods in summertime being sketched by two Hoosier artists.

The book contains a personal mini-directory on the inside back page. It is designed to save telephone users time by making space available for them to list emergency and frequently called numbers.

The book also contains easy-to-use charts showing the time periods when reduced rates for long distance are in effect, and directions for using directory assistance for obtaining numbers not listed in the directory.

Two men were discussing the said one, "I'm boss at my house. Last night I found there was no vicissitudes of henpecked husbands. "But let me tell you," hot water, so I raised the roof.

CHURCH NEWS

UNITED METHODIST GROUP MINISTRY
 (A fellowship of United Methodist Churches in the area south and east of Lake Maxinkuckee.)
LETTERS FORD CIRCUIT
 Rev. Phillip Lutz, Pastor

LETTERS FORD METHODIST
 Leon Welling, S. S. Supt.
 Church School, 10:00 a.m.
 Worship, 11:00 a.m.
 MYF on second and fourth Sunday.

MONTEREY METHODIST
 Worship 9:10 a.m.
 Church School 10:15 a.m.
 Mount Santa Grove Parish
 Rev. Arthur Bishop
 Mt. Hope United Methodist
 Robert C. Kline, Superintendent
 Church School 10 a.m.
 Worship at 11 a.m. every 2nd and 4th Sunday.

Santa Anna United Methodist
 Phillip Peer, Superintendent
 Church School 10 a.m.
 Worship 11 a.m. every 1st and 3rd Sunday.

Popular Grove United Methodist
 William Lake, Superintendent
 Church School 10:45 a.m.
 Worship 10 a.m.

Gilead United Methodist
 Rev. Ray Kuhn, Pastor
 Grover Shaffer, Superintendent
 Worship 10 a.m.
 Worship Service 11 a.m. on 2nd and 4th Sundays.

The United Methodist Church
 Michland Center - Burton Charge
 Rev. Curtis R. Sylvester, Pastor
 Phone: Rochester 223-3751

Richland Center United Methodist Church
 Robert J. Nellans, Lay Leader
 Howard Conrad, Superintendent
 Worship, 9:30 on 2nd and 4th Sunday.
 10:30 on 1st and 3rd Sundays.
 Church School: Alternating time.

Burton United Methodist
 John Cessna, Lay Leader
 Margaret Belcher, Superintendent
 Worship: 9:30 on 1st and 3rd Sundays.
 10:30 on 2nd and 4th Sundays.
 Church School: Alternating time.
 Methodist Youth Fellowship at 6:30 p.m. Sunday.

Saint Ann's Catholic Church Monterey
 Rev. Robert W. Sorg, Pastor
 Sunday masses: 7:30 and 9:30 a.m.
 Weekday Masses: 8:00 (Winter), 7:30 (Summer); 3:30 Saturdays (Winter).
 Holy days of Obligation 7:30 a.m. and 7:30 p.m.
 Confessions Saturday 4:00 to 1:30; 7:00 to 8:00; After Sacred Heart Devotions and Nights before Holy Days 7:00 to 8:00.

Trinity Lutheran Church
 Missouri Synod
 Roger L. Sommer, pastor
 330 Academy Drive
 Phone 842-3613
 Sunday worship 9:00 a.m.
 Sunday School 10:00 a.m.
 Visitors welcome.

Culver Bible Church
 Rev. Thomas Bump, Pastor
 718 South Main Street
 Sunday School 9:30 a.m.
 Sunday Worship 10:30 a.m.
 Evening Service 7:00 p.m.
Wednesday 7:30 p.m.
 Nursery available for all Sunday services.
Culver Military Academy Memorial Chapel
 Rev. Calvin R. Couch, Chaplain
 Time of Worship, 11:00 a.m.
 Visitors always welcome.
Zion Gospel Chapel
 Steven Bradley, Pastor
 Manson Leap, Superintendent

William Sheridan, Asst. Supt.
 Marion Kline, Class Leader
 Lester Wentzel, Lay Leader
 Sunday School 9:30 a.m.
 Morning Worship 10:45 a.m.
 Evening Worship 7:30 p.m.
 every Sunday.
 Evening Worship 7:30 p.m. every 4th Sunday of the month.
 Everyone welcome.

Pretty Lake Trinity United Methodist
 Rev. J. C. White, Pastor
 Morning Worship 9:30 a.m.
 Sunday School 10:20 a.m.

Culver Emmanuel United Methodist
 Rev. Maurice C. Kessler, Pastor
 Leon Sims, Superintendent
 Church School, 9:30 a.m.
 Worship, 10:40 a.m.

Burr Oak Church of God
 Rev. Darrel Maddock
 Ferris Zechiel, Superintendent
 Stan Reinhold, Asst. Supt.
 Sunday School, 9:45 a.m.
 Worship Service, 10:45 a.m.
 Worship Service, 7:30 p.m.
 Hour of Power, Wednesday, 7:30 p.m.
 Holy Communion observed the first Sunday of each month during the morning worship service.

Culver Wesley United Methodist School - Lewis Streets
 Earl W. Sharp, Minister
 Mrs. Ted Strang, Director of Christian Education
 Church School, 9:30 a.m.
 Worship, 10:40 a.m.

St. Thomas Episcopal Catholic Church
 Center and Adams St., Plymouth
 Father William C. R. Sheridan, Pastor
 7:00 a.m. Holy Communion
 9:00 a.m. Family Eucharist
 9:00 a.m. Parish Nursery

St. Mary's of the Lake Catholic Church
 "The Church With The Gold Crosses"
 Rev. Joseph A. Lentk, Pastor
 Saturday Mass - Winter Schedule (Sept. thru June) 5:30 p.m.
 Sunday Mass, 8:00 and 11:00 a.m.
 Saturday Mass - Summer Schedule (July and August) 7:30 p.m.
 Sunday Mass, 7:00, 8:00, 10:00 and 11:00 a.m.
 Daily Mass, 9:00 a.m.

Grace United Church of Christ
 Rev. John Krueger, Pastor
 Church School classes, 9:15.
 Worship Service, 10:30.

First Church Of Christ Scientist
 428 So. Michigan St., Plymouth
 Sunday Service 10:30 a.m.
 Sunday School 10:30 a.m.
 Wednesday meeting 7:45 p.m.
 Reading Room open at this address, Wednesday and Saturday, 2:00 to 5:00 p.m.

Subject of the lesson: Adam and Fallen Man. James 4:10
 Humble yourselves in the sight of the Lord and he shall lift you up. Ps. 147:5,6
 Great is our Lord and of great power, his understanding is infinite. The Lord lifeth up the meek. From the Christian Science Textbook Science and Health with Key to the Scriptures, by Mary Baker Eddy: By lifting thought above error or disease and contending persistently for truth you destroy error. Science inevitably lifts one's being higher in the scale of harmony and happiness.

The best salesman in the world is the guy who can make his wife sympathize with the girl who lost her compact in his car.

ORDINANCE NO. 223

An ordinance amending Ordinance No. 218 which ordinance established the yearly salaries of the Officers and Employees of the Town of Culver.
 Be it Ordained that Ordinance No. 218 be amended in the following manner:

Be it Ordained that the yearly salary for the Superintendent of Street Department, Water Department and Sewer Trunk Lines Department be as follows:
SUPERINTENDENT OF STREET DEPARTMENT, WATER DEPARTMENT AND SEWER TRUNK LINES DEPARTMENT \$2,100.00
 Street Department 1,000.00
 Water Department 942.84
 Sewer Department 157.16
 Public hearing May 21 at Town Board meeting.
 Donald Muehlhausen
 Donald Mikesell
 Edward Pinder

ATTEST:
 Marizetta Kenny,
 Clerk-Treasurer

THE CULVER CITIZEN

ON LAKE MAXINKUCKEE • INDIANA'S MOST BEAUTIFUL LAKE
 Established July 13, 1894
 Published every Thursday, by The Independent-News Co., Inc.,
 601-03 Roosevelt Road, Walkerton, Indiana, 46574.

Second Class Postage Paid At Culver, Indiana 46511

SUBSCRIPTION RATES

| | | | | |
|---------|---------|--------------|----------|--------------|
| | Indiana | Out-of-State | Indiana | Out-of-State |
| 1 Year | \$4.00 | \$4.50 | 6 Months | \$2.25 |
| 2 Years | \$8.50 | \$7.00 | 3 Months | \$1.25 |
| | | | | \$1.50 |

ROBERT E. DRIBB, Editor

LIVE 'n LAFF



'...It says we forgot to turn it on!' 56

chap-et
 soothing antiseptic relief for
CHAPPED LIPS
 WIND OR SUNBURNED LIPS —
 FEVER, BLISTERS, COLD SORES.
IN THE GREEN TUBE

COURAGE, PARENTS YOUR YOUNG ARE NEVER LOST

There is only one parent: the infinitely loving Father-Mother God. And He has the strongest, most tender love for all His children.
 Broadcast this week over many stations including:
 the TRUTH that HEALS

PROFESSIONAL DIRECTORY

Dentist
Dr. Thomas M. Pugh, D.D.S.
 Office Hours By Appointment
 1001 Lake Shore Dr.
 Phone 842-3465

PHYSICIAN
LAKE SHORE CLINIC
 921-1003 Lake Shore Dr.
 Phone 842-3327
Michael F. Deery, M.D.
 Physician

General Medicine & Obstetrics
 Office hours by appointment
M. GEORGE ROSERO, M.D.
 PHYSICIAN
 17 E. Main St., Kewanna, Ind.
 Office hours by appointment
 Phone No. Office 653-4321
 If no answer phone 653-4351

CLINICS
CULVER CLINIC
 820 Academy Road
 Phone 842-3351

G. W. Stevenson, D.O.
 General Family Practice
 Office Hours by Appointment
 Phone 842-3351

OPTOMETRISTS
DR. F. L. BABCOCK
 OPTOMETRIST
 Office Hours Appointment
 Tues., Thurs., Fri. 9-5
 Wed., Sat. 9-12
 Closed Monday
 Phone 842-3372

TIPS ON DRIVING OUR EXPRESSWAYS

Our vast Interstate highway system is nearing completion. In fact, you can already drive virtually border-to-border without traveling a two-lane road; a far cry from just a decade ago when superhighway-building got underway in earnest.

While safe-driving rules apply on any roadway, the following tips are designed especially to help you drive our expressways safely.

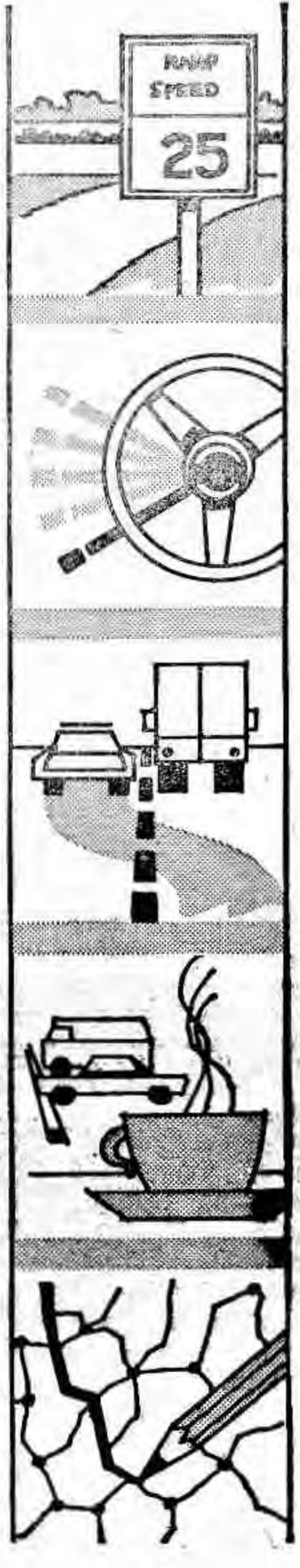
TO ENTER AND EXIT: When entering an expressway, remember — those cars are traveling at far higher speeds than on local roads. Signal your intentions, check rear-view mirrors, accelerate quickly, and blend into traffic. To exit, know when your turn-off is coming up, signal, check mirrors (and blind-spot), move to your lane, and slow down to the posted ramp speed.

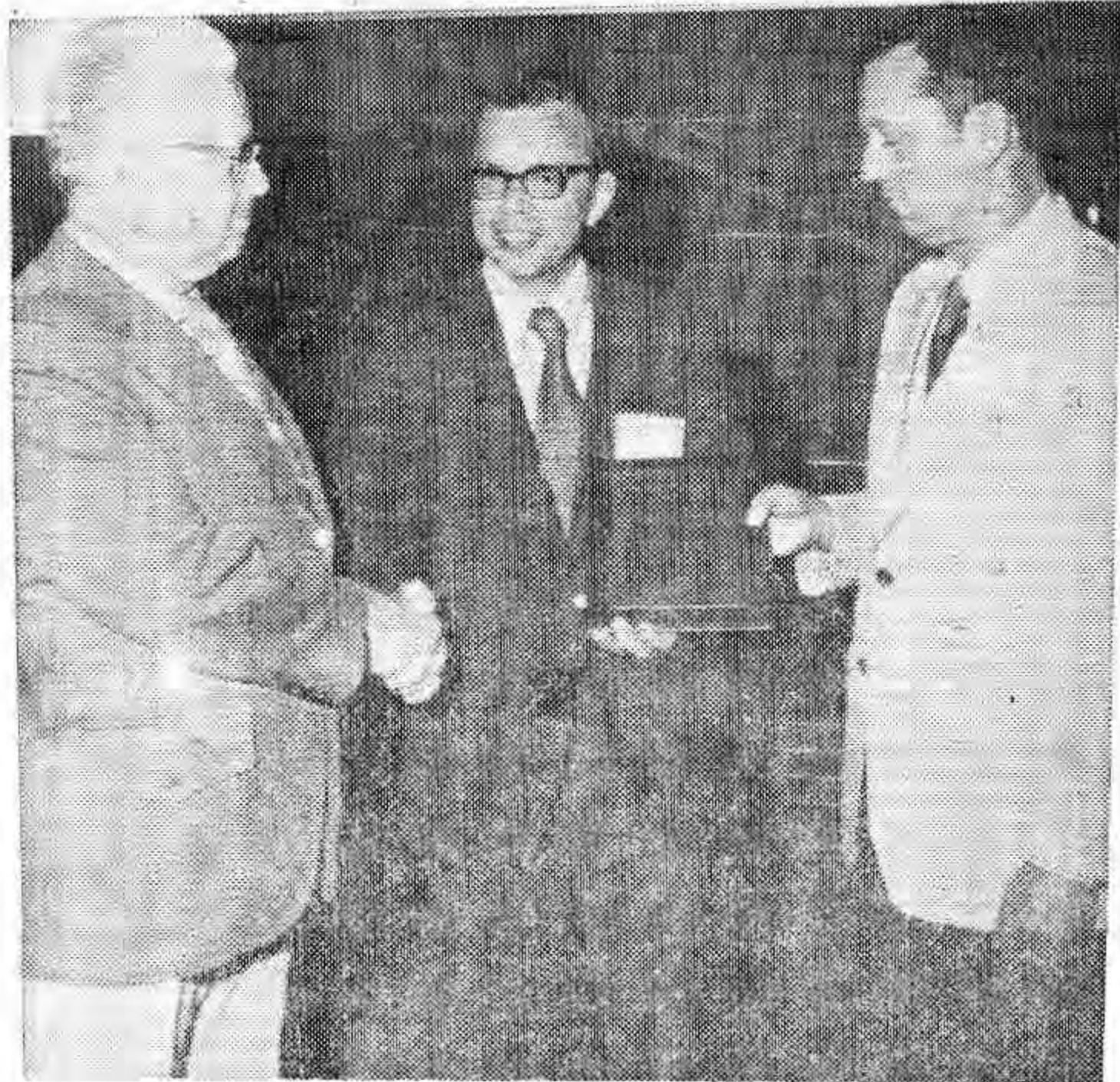
NEVER STOP ON PAVEMENT: If you see you're going to miss your exit, drive on to the next one. Abruptly stopping or swerving to change lanes could cause a tragic accident. Above all, don't try to pull off the pavement and back up to your exit; it's illegal and dangerous. If an emergency develops, drive onto the shoulder and stop. Should you need help, tie a handkerchief to your door handle or radio antenna and raise the hood. At night, use flashers and/or interior lights.

SIGNALING, PASSING, TAILGATING: On expressways, stay in one lane as much as possible. If you do change lanes to pass, check mirrors, signal, accelerate and move in to your new position with plenty of time to spare. Tailgating is always dangerous, but extremely so on expressways. So keep a respectable distance away from other cars. Rule of thumb: one car length for every ten miles per hour of speed.

NEVER DRIVE WHEN DROWSY: Don't try to stay awake if tiredness sets in while driving. Stop occasionally at a service or rest area. Walk around. Stretch. Get a cup of coffee, a bottle of pop. If you're tired, take a nap. Don't try to keep awake with drugs. It's a good idea to allot ten minutes of every driving hour for a "rest stop."

PLAN YOUR TRIP: Sounds elementary. However, it refers to not only knowing your route, but making sure your car's in top shape for the trip. Unique, up-to-date highway maps are available from American Oil Company dealers, and your service station will be happy to check essentials like wipers, lights, tires, and brakes before you start out.





Phillip K. Mallory, center, a physics teacher at Culver Military, is shown as he received recognition at DePauw University in Greencastle, Ind., Saturday, April 28. Mallory was one of three Hoosier high school teachers cited as an "Outstanding Physics Teacher" by the Indiana Section of the American Association of Physics Teachers. The group of college and high school physics teachers met on the DePauw campus where the awards were made by Dr. Hugh Henry, left, president of the ISAAPT and head of DePauw's physics department.

Malcolm Hults, of Ball State, right, served as chairman of the awards committee. Selection was based on the recipient's lecture ability and interaction with students, personally, laboratory work, physical facilities available for teaching, and student projects and teaching aids. The award plaques were made possible thru support by the Bendix Corporation, Union Carbide, Esterline Angus, Public Service Indiana, and Anaconda Company.

UNITED METHODIST WOMEN TO MEET

"Commitment" is the theme for the May meeting of the United Methodist Women of Wesley United Methodist Church at 7:30 p.m. Thursday, May 10 in Fellowship Hall.

Mrs. Richard Dehne will be the leader in this service of songs and scripture as the members pledge themselves and their gifts to the work of the United Methodist Women.

Hostesses will be Mrs. F. L. Babcock, chairwoman; with Mrs.

Rookies Share Spotlight With Veterans

Candidates for "Rookie of the Year" honors in the 57th annual Indianapolis 500-mile race on May 30 are claiming a larger share of the spotlight every day as practice speeds continue to climb in preparation for the start of official time trials Saturday and Sunday.

Only the fastest 33 cars and drivers among the 83 entries will be eligible for starting positions on Race Day behind the Cadillac Eldorado pace car.

One of the outstanding newcomers this year is Bobby Allison, who earned the distinction of being the first to complete the required 100-mile "Familiarization Run" at specified speeds under the scrutiny of USAC officials. He has compiled an excellent record in stock car competition on NASCAR tracks and has been chosen by Roger Penske as the team mate of Mark Donohue and Gary Bettenhauser.

Johnny Parsons, Jr., son of the 1950 Indianapolis winner, also is attracting considerable attention; and two other prominent newcomers are Tom Bigelow and Bill Simpson.

The purse is expected to exceed \$1,000,000 again this year and the contestants will be shooting for individual prize money ranging from approximately \$15,000 for last place to more than \$250,000 for the winner.

Speed targets on the first day of time trials will be the one-lap

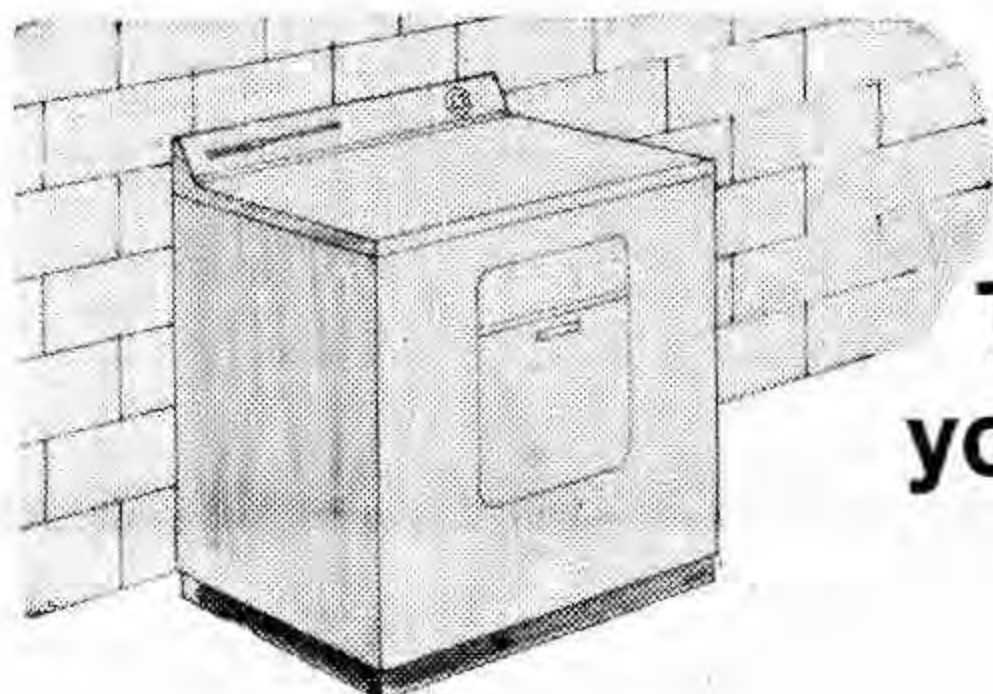


Bobby Allison (left) and Johnny Parsons, Jr., two prominent "rookies" at the Indianapolis Motor Speedway this year, discuss their chances with Race Referee Don Cummins.

and four-lap records of 296.678 and 195.940 miles an hour established by Bobby Unser last year; and several drivers are predicting one or more laps at better than 200 miles an hour.

The track will be open for

qualification attempts from 10 o'clock until 6 o'clock (EST) on Saturday and from noon until 6 p.m. on Sunday. Gate admission will be \$2 per person with free parking for 25,000 cars in the Speedway infield.



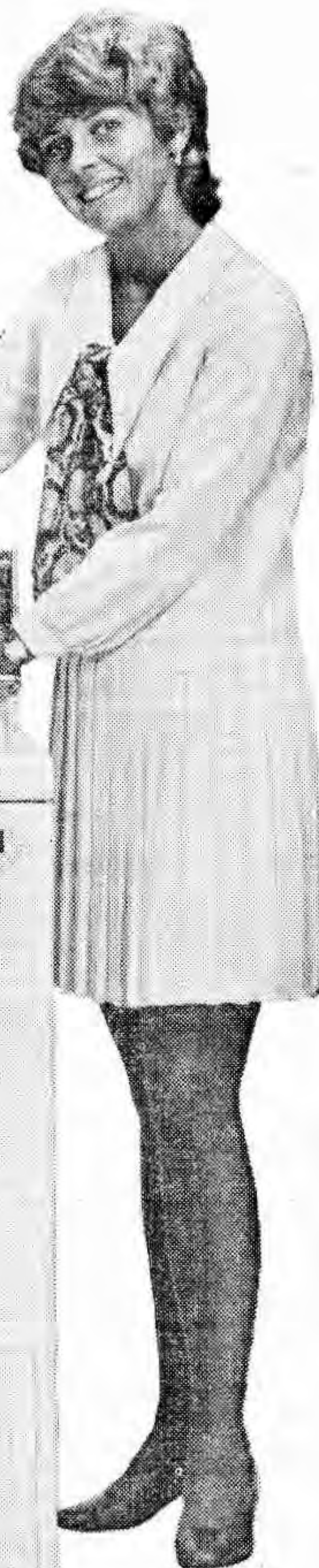
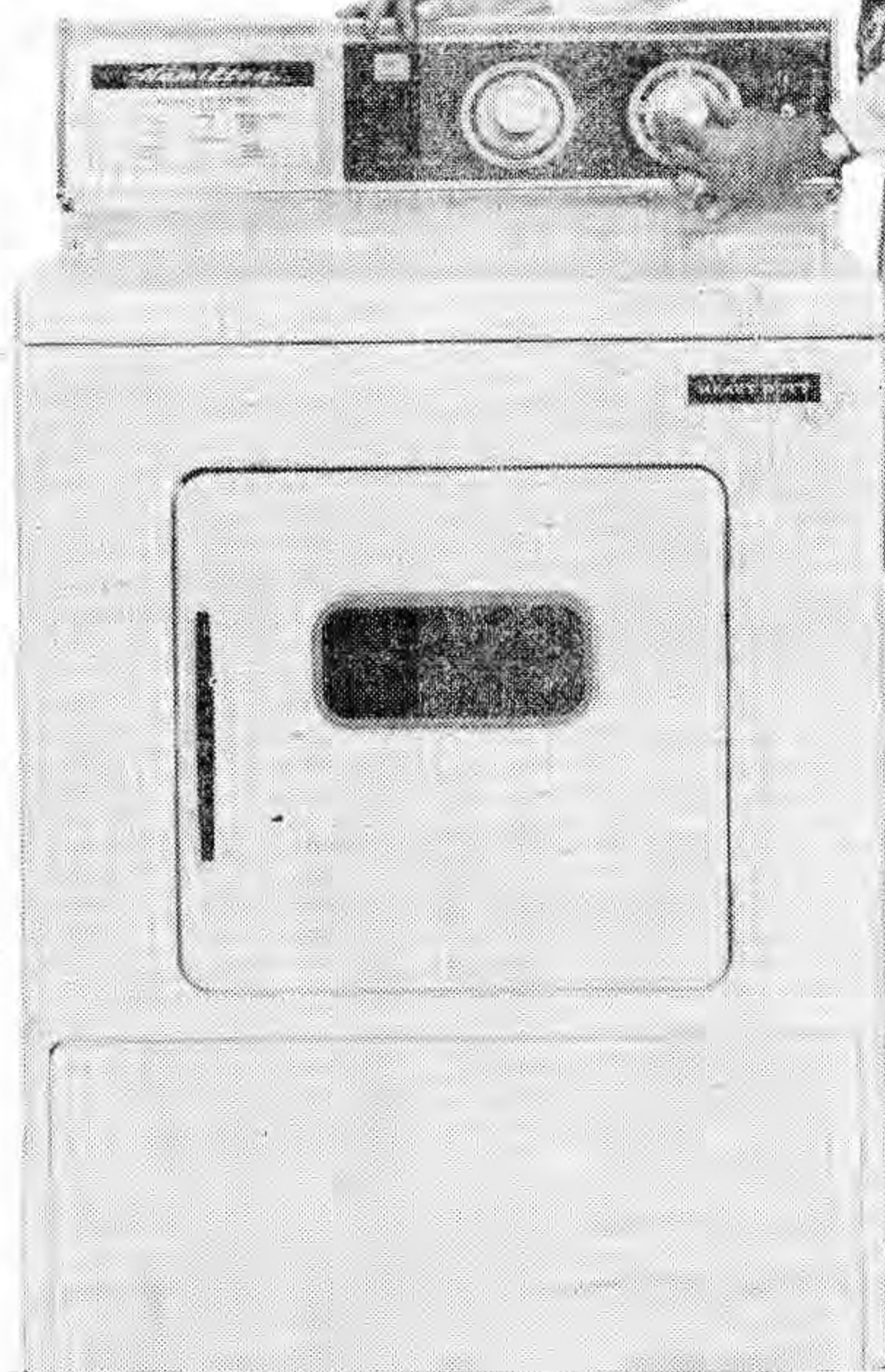
Time to trade in your old obsolete clothes dryer!

Get a new work-saving GAS DRYER

Your old dryer has been a wonderful friend through the years... a real helper! However, important improvements have been made, and today's Gas Dryers are better than ever with new, work-saving features.

Now that practically all your washables are permanent press, doesn't it make sense to have a dryer that was made for this type of clothing? With a specific setting for permanent press, a new Gas Dryer gently tumble-dries your clothes just the right amount... no more, no less.

It's now time to trade in your old obsolete dryer and save yourself all those tedious hours of ironing. Get the one that does it right... a new Gas Dryer.



Northern Indiana Public Service Company



GAYBLE THEATRE
North Judson, Ind.
Closed Mon. - Thurs. for Remodeling

Fri. & Sat. 7:00
Sunday 4:00 & 7:05

9 AGES OF NAKEDNESS
EASTMAN COLOR RATED X

Plus 2nd Hit
HARRISON MARKS
Rated "X"

TRI-WAY DRIVE-IN
Fri., Sat., Sun., May 11, 12, 13

PICKUP ON 101
With Jack Albertson
Lesley Warren
Rated "PG"

Also
ROLLER DERBY
Unholy Rollers
With Claudia Jennings

SPORTS CORNER

THE START OF THE GREATEST single sports spectacle begins to unfold Saturday as the first day of qualifying for the annual Indianapolis 500 mile race opens with the events leading up to the race on Monday, May 28. The total purse again this year will exceed \$1 million and will have in all probabilities, new speed records including that first official 200 m.p.h. lap during the qualifying if weather conditions are good enough.

THE BIG INCREASE IN THE lap speed in the last few years is a result of car design, not engine. And is going up so fast that some drivers, including the all-time great A. J. Foyt, think and have stated it's too fast for safety. However, progress is always coming and the safety factors have also increased, but perhaps not on an even ratio with the speed. But speed is the name of the game and speed is here to stay in the racing circles.

AS IS OFTEN THE CASE AT the big 2½ mile oval this time of the year, the weather has put some restrictions on practice to achieve these new speeds. The gusty winds of the spring and some, but not a lot of rain, have held things down. On the good

conditions of last Saturday, a lot of the lead-footed drivers put laps of over 190 on their practice records. This pretty well determines how fast they can go with wind meaning more than anything to the high speed cars.

OF COURSE THE STANDBY crew of the Unsers, Al and Bobby, Foyt, Donohue, Revson, Andretti, Johncock, Leonard, and on down the line will be challenged by the young chargers led by the sons of former racing greats, Gary Bettenhausen and Bill Vukovich. Both have proved their talent and are in fine equipment to head the younger set. Some outstanding rookies also appear on the scene with Bobby Allison, of stock car fame, and Johnny Parsons Jr., son of the 1950 winner heading the list. With such an array of talent, things will have to happen come Saturday if the weather is favorable.

BOBBY UNSER, A FORMER winner at Indy, seemed to have the edge on everyone last year on speed and handling, but as he suffered through one race after another of car trouble, he just wasn't able to keep the highly refined racing machine "together" for a full race. However, he already owns the one lap and four

lap records and will probably be the man to beat to get the pole come qualifying runs.

FROM HERE ON OUT, THE drama builds. It will all climax on May 28, between 2:00 and 3:00 p.m. at the world famous, Indianapolis Motor Speedway.

SCHOOL MENU

WHAT'S COOKING

At

Culver Community High School
MAY 14 - 18

MONDAY

Chili and crackers
Celery with peanut butter
Toasted cheese sandwich
Peach cake
Milk

TUESDAY

Tenderloin on bun
Tri taters
Buttered corn
Cake with lemon pudding
Milk

WEDNESDAY

Scalloped potatoes and ham
Green beans
Cottage cheese with pineapple
Brownie
Bread and butter
Milk

THURSDAY

Hamburger and spaghetti
Mixed vegetables
Tossed salad
Fruit
Bread and butter
Milk

FRIDAY

Fish
Baked beans
Cole slaw

Jello with fruit
Bread and butter
Milk

under the supervision of Constance Richie.

COLLEGE NEWS

Linda Joann Barnes and Robert C. Barnes of Rt. 2, Box 10AB, Culver, will be graduating from Indiana State University, Terre Haute, during the spring commencement on Sunday, May 13.

Linda will receive a Master of Science degree in elementary education and Robert will receive his Master of Science degree in departmental curriculum in health and safety.

Jean Wagner is student teaching in the Culver School system

Stomach Upset by Gas and Acid?

Di-Gel with Simethicone quickly relieves both acid and gas.

This unique discovery breaks up and dissolves trapped gas bubbles. Your relief is more complete because Di-Gel takes the acid and the gas out of acid indigestion. When you eat too well, demand Di-Gel. Tablets, liquid, Product of Plough, Inc.



◆ FOR RENT ◆
SPACE IN THIS PAPER
Will Arrange To Suit
GOOD NEIGHBORS--PRICES TO
FIT YOUR BUSINESS

YOUR OWN PERSONAL



POCKET
STAMP

PERMA-STAMP — the pocket stamp that goes wherever you go — neat and clean — ready for instant use WITHOUT AN INK PAD!

Your light-weight PERMA-STAMP Pocket Stamp is perfect as a personal signature stamp . . . a time-saving check endorsement stamp . . . or a name and address stamp for imprinting envelopes, identifying books and other personal or household items.

Every impression is crisp and clean — as if it came off a printing press. Smallest details and finest lines are reproduced with consistent clarity and cleanliness.

Snap-top lid protects your stamp until you're ready to use it. Attractive jade-green plastic case keeps stamp safe from dust, lint and dirt. Available in your choice of ink colors: violet, red, black, green and blue.

Best of all, a PERMA-STAMP Pocket Stamp costs little more than an old-fashioned rubber stamp.

PERMA-STAMP and PERELON are registered trademarks of S. C. Johnson & Son, Inc., Racine, Wisconsin, U.S.A.

AGONIZING PAIN FROM INGROWN TOENAIL?

Get Outgro[®] for fast relief

Why suffer the agony of ingrown toenail pain when Outgro can give you fast, temporary relief? Outgro fights irritated skin, eases inflammation, reduces swelling without affecting the shape, growth or position of the nail. Outgro gives you fast pain relief, and makes it easier to cut out the nail — cut out the pain caused by ingrown toenail. Stop ingrown nail pain fast with Outgro.

How to get your refrigerator to cook things.



Stir the right things into Jell-O[®] Brand Gelatin and your refrigerator will fix crunchy salads, interesting fruits and new side dishes. For over 250 exciting ideas, send 25¢ (in coin) with your name, address and zip code to: Joys of Jell-O, Box 8074, Kankakee, Illinois, 60901.



Jell-O is a registered trademark of the General Foods Corporation.

Order Now For Memorial Day

McKINLEY MONUMENTS

Delivered Anywhere

Winamac - Phone 946-3352



GRADUATING SENIORS

Congratulations From IMPCO!

You will never regret the time you spent working toward your high school diploma. The education you have gained will help you wherever you go and whatever you do.

We are seeking individuals interested in furthering their knowledge. If you would like to continue your education you can do so here. We can teach you skills that will provide you steady employment in a challenging profession for the rest of your life. If you have mechanical aptitude, and are willing to work to get ahead, drop by and see us.

INDIANA METAL PRODUCTS

TOROX DIVISION of Camcar Screw & Manufacturing,

A Textron Company

ROCHESTER, INDIANA

An Equal Opportunity Employer

Dreams Come True In 28 Flavors



Howard D. Johnson, founder of Howard Johnson Company, and his son, Howard B. Johnson, chairman and president, sample some of the ice cream that has made the Company famous throughout the world. Occasion was the dedication of an inscribed marker to commemorate opening of Howard Johnson's first store (pictured) in 1925.

Howard D. Johnson borrowed \$500 to take over operations of the store in Wollaston, Mass. His dream was to build a business "with a product I could call my own."

The product was ice cream, which he began making in the basement of the store. By doubling the usual butterfat content and using only quality ingredients, he developed "a superior product" — the beginning of the "28 Flavors" that became his trademark.

The following summer, Johnson operated a stand on Wollaston Beach and later opened

a restaurant in Quincy, Mass. Later, to expand farther and faster, he worked out a deal with another local businessman who agreed to pay a fee and buy supplies from Johnson for the right to use his name on a restaurant.

That was the beginning of the franchise system that continues today. The restaurants are either operated by the Company or operated under a licensee agreement by independent owners.

Johnson's idea proved successful, and the chain of restaurants spread throughout New England, then south along the Atlantic seaboard to Florida. Later it moved westward — and today it extends from Maine to California.

In 1954 the Company opened the first of its coast-to-coast chain of motor lodges in Savannah, Ga. Included are a number of multi-story motor lodges in downtown areas of such cities as New York, Wash-

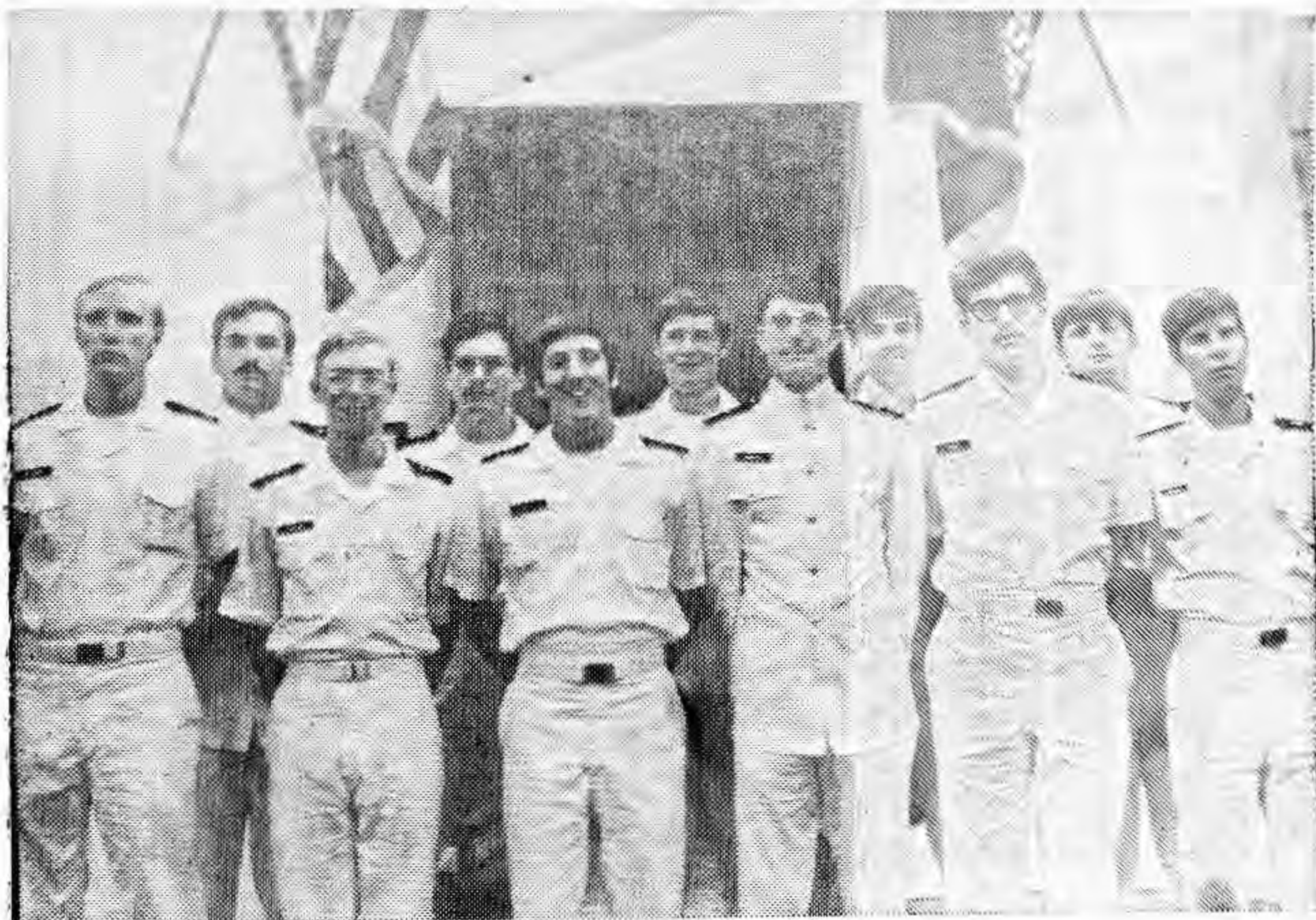
ington, Cleveland, Detroit, Miami and Pittsburgh.

In 1955 the Company began to package its food products for sale to retail stores. Today Howard Johnson's canned and frozen grocery products — from clam chowder to entrees to cakes — are sold in supermarkets and grocery stores in major marketing areas.

Another division of the Company is a chain of domestic restaurants named Red Coach Grills. These luxury dining places are decorated in American Colonial style and feature lobster, prime steaks and bonded liquors.

Still another division of the Company is a chain of restaurants called Ground Round. These restaurants feature informal family dining with a limited menu.

Today, there are 871 Howard Johnson's restaurants and 438 motor lodges operating in the United States and Canada.



University of Mississippi Naval ROTC students awarded full scholarships for the next academic year on the basis of good academic and aptitude standings during the current year are (from

left) Jay C. Pittman Jr., Byhaloe; Charles Wayne Madsen, Willmore, N. J.; David Ruff, Tupelo; Michael R. Ambrose, Columbus; Edward L. Rowe, Huntsville,

Ala.; Richard L. Golson Jr., Jacksonville, Fla.; Peter B. Whitney, Culver, Ind.; Grady Wilkerson, Jackson; Henry E. Baltar Jr., Gu

Jackson; Henry E. Baltar Jr., Gulfport; Ricky L. Beasley, Huntsville, Ala.; Thomas B.

Holmes Jr., Batesville; David W. Glye, Norfolk, Va.

SPRING PROGRAM TO BE PRESENTED SUNDAY

The Spring Program by the Choirs of Wesley United Methodist Church, Culver, will be at 7:00 p.m. Sunday, May 13, in the church sanctuary. The Chancel, Disciple Singers, Melody and Handbell Choirs will present a program of anthems and contemporary music.

Mrs. Jack C. Spencer will direct the Chancel Choir with Mrs. Clayton Moon as organist. The Disciple Singers will be directed by Mrs. Earl Sharp with Mrs. Robert Kline as pianist. The Melody Choir director will be Miss Diane Thomas with Mrs. J. Bryce Bigley as pianist. The Handbell Choir is directed by Lloyd Moseng.

Following the program, a reception for the choirs and those attending will be held in Fellowship Hall with Mrs. Robert Lindvall in charge. The public is invited.

expressed special thanks to all the officers and directors for their support during the past year. Also, a special thanks and appreciation to all music students and parents who donated of their time and effort to make the projects sponsored this year such a success. All the music organizations and their directors are to be commended for their fine ratings in the contests and their fine performances in programs throughout the year. The Spring Concert will be held in the Auditorium at the High School on May 20.

Don't need it — why keep it — use our classified ads!

FOR HOMEOWNERS HOMEOWNERS HOMEOWNERS

NOW YOU CAN

Cut your own firewood, prune trees, build furniture, clear your storm damage.



- Rugged
- Powerful
- Lightweight

only \$149.95 with 12" bar & chain

HOMELITE® 150 CHAIN SAW

Your Homelite Dealer is listed in the Yellow Pages.

Booster Committee Appointed At Final Meeting

In the final meeting for this school year of the Culver Community Music Boosters, held in the high school cafeteria, committees were appointed and plans were completed for the Tenderloin and Fish Fry that will be held in the Junior High School gym on Saturday, May 12.

It was announced that Mrs. Ed Kowatch will chair the concessions for the Twirling Contest to be held at the High School on July 7th. It was voted to pay the expenses of the Cavallettes to be able to attend an instructional camp this summer. Also voted that Mr. Byfield proceed with the ordering of new ties for the senior band members.

Officers elected for the 1973-74 school year are: president, Kenneth Crowel; first vice-president, Mrs. Warren Curtis; second vice-president, Mrs. Marion Kline; secretary-treasurer, Mrs. Richard Woodward; directors, Mrs. Ed Kowatch, Mrs. Ed Torok, Mrs. Robert Wentzel, Mrs. Ralph Winters and Mr. Robert Flora.

Mr. Cullice, outgoing president,



BIRTHDAYS

FRIDAY, MAY 11
Tom Boswell

Debbie Henderson White
Beth Ann Fox
Karl E. Master Jr.
Anton Cihak III

SATURDAY, MAY 12
Nellie Jane Baker
Edward Geiselman
Marsha Crozier
Patricia Counts
Cindy Beetsma

SUNDAY, MAY 13
Fay Stokes
James Kiplinger Jr.

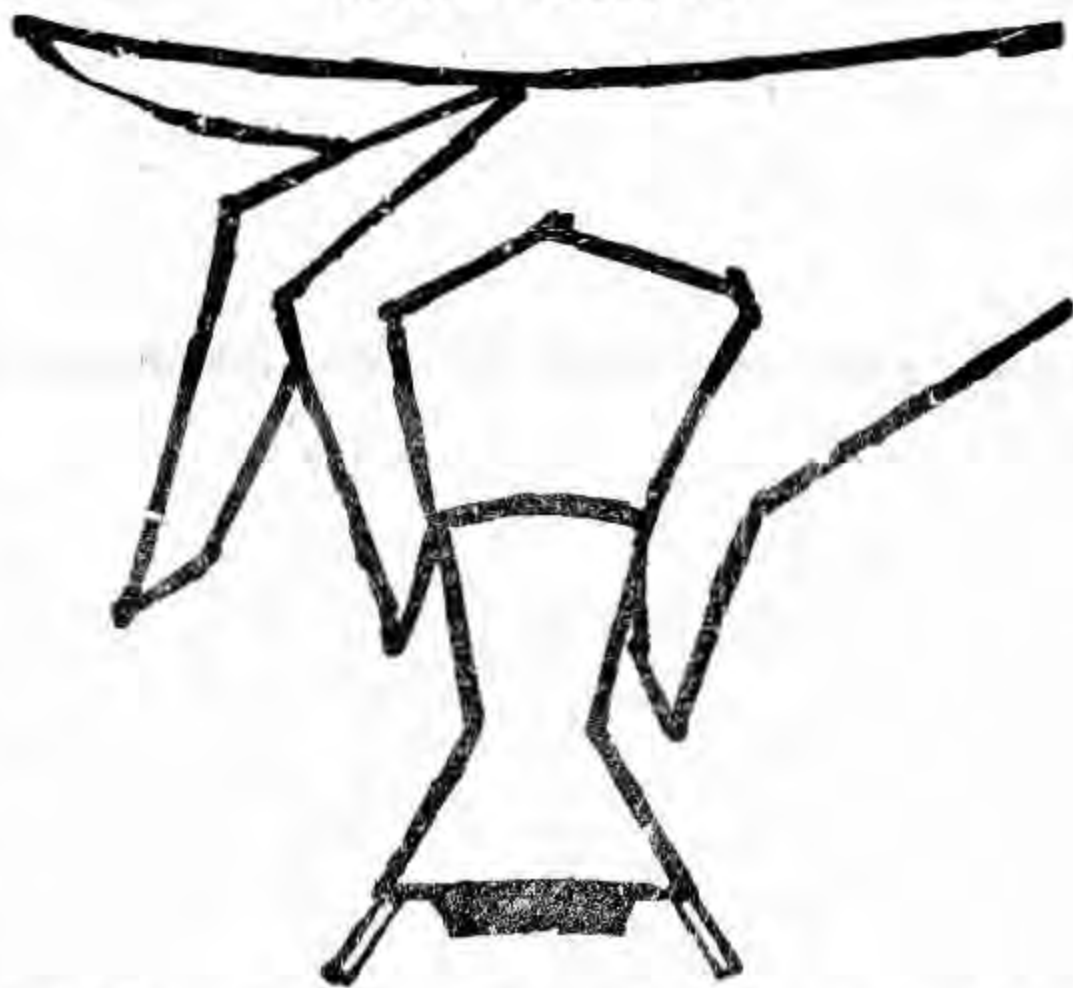
MONDAY, MAY 14
Patty Miller
Thomas C. Hodgkin
Patti Liane Chisholm

TUESDAY, MAY 15
Mrs. Dorothy Bickle
Mrs. Wayne Holdread
Mrs. Dave Walther
Roscoe Newcomb

WEDNESDAY, MAY 16
Gary Paul Dillon
Catherine Overmyer Bennett

PERMA-STAMP®

HAND STAMP



Delivers 25,000 Perfect Impressions WITHOUT INKING

PERMA-STAMP never needs an ink pad! And PERMA-STAMP can't leak . . . or dry out. Impressions are always perfect — never over-inked, never under-inked.

PERMA-STAMP accurately reproduces fine line cuts, small type faces, logotypes — even photographs. Perfect for banks, offices, shipping rooms and other industrial use . . . as well as endorsement, signature, name and address stamps and other personal applications.

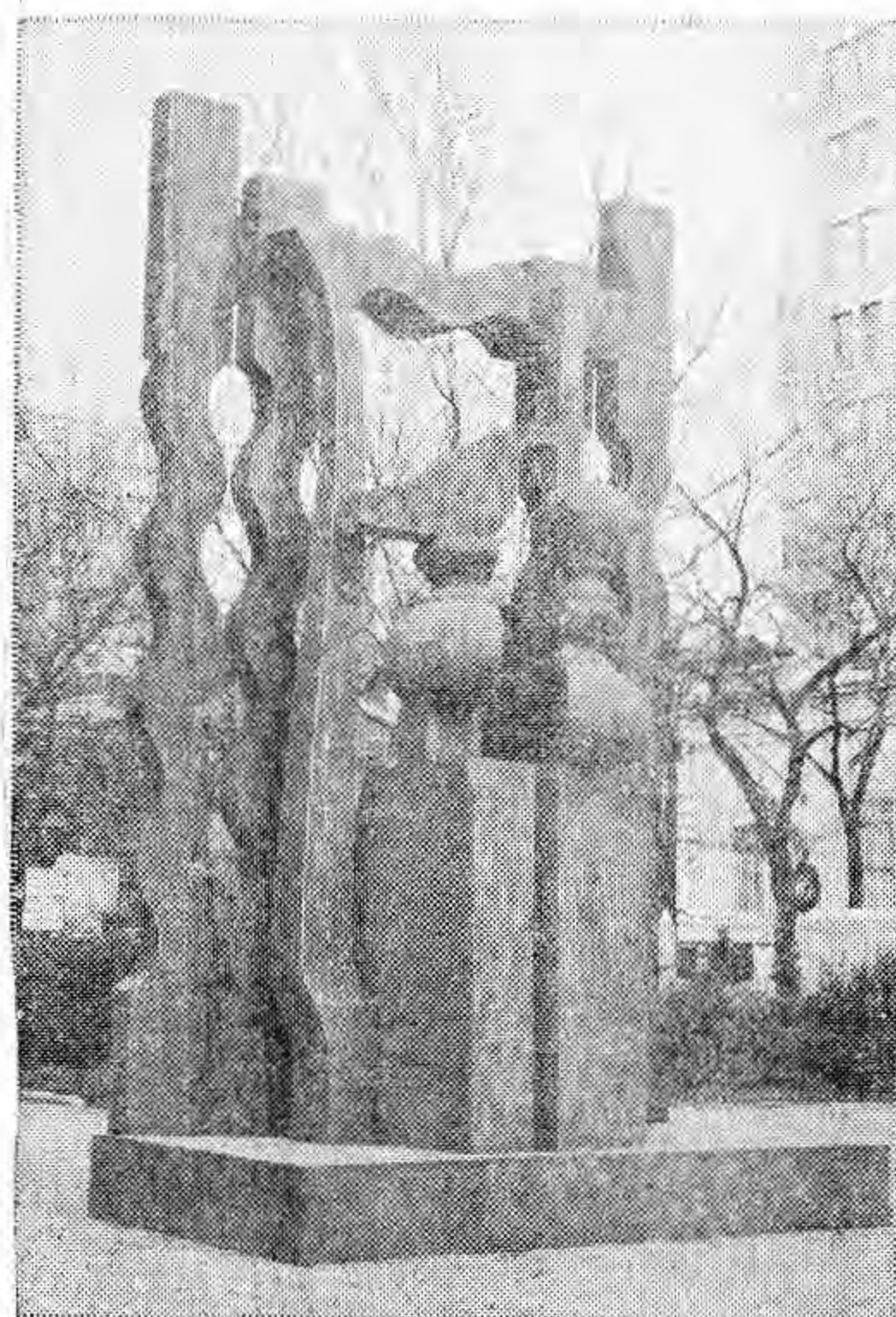
For surprisingly little cost we will make a PERMA-STAMP to your specifications . . . or you may choose from the many stock wording stamps we carry.

PERMA-STAMP Hand Stamps also are available with conventional holders as knob handle stamps, moulding stamps, peg stamps, pencil cap stamps, flexible handle stamps and rocker mount stamps.

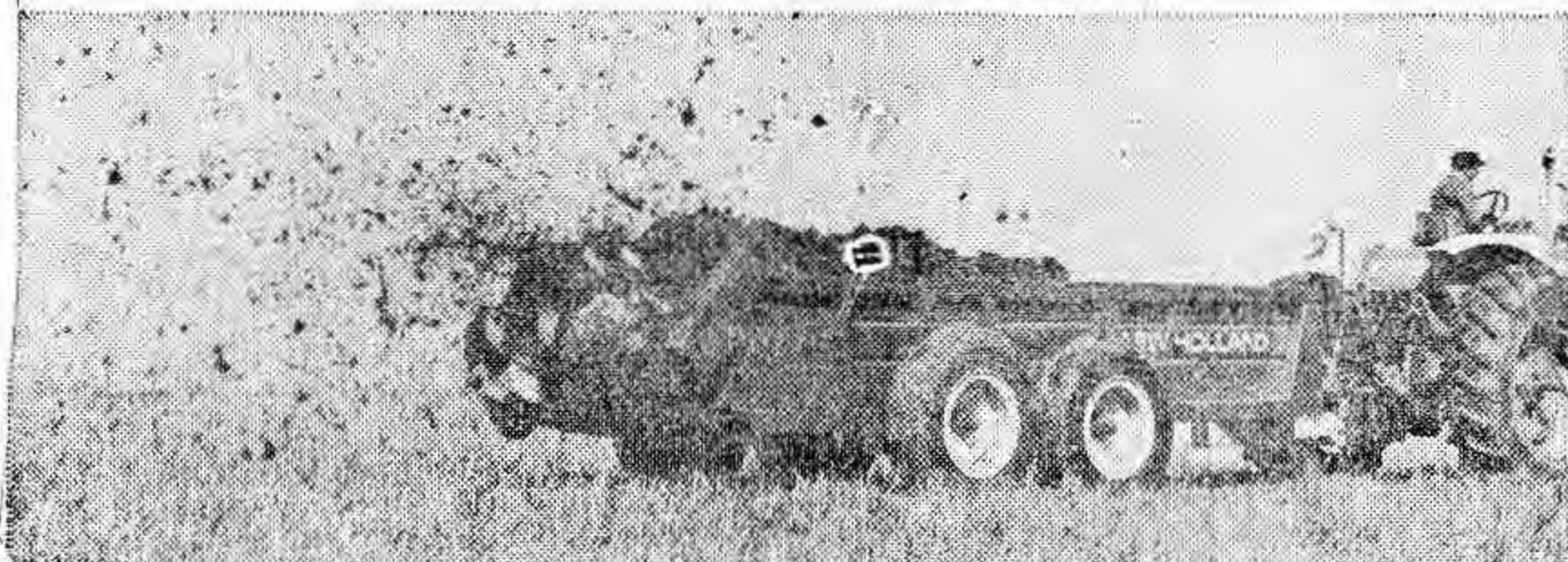
The Culver Citizen

PERMA-STAMP and PORELON are registered trademarks of S. G. Johnson & Son, Inc., Racine, Wisconsin, U.S.A.

Modern Steel in Sculpting and Spreaders



Corten steel has a wide variety of uses because of its rust-resisting qualities. The diversity of uses is illustrated in these two photos. On the farm it is used in the side panels of this New Holland manure spreader. Despite the highly corrosive nature of animal wastes, the manufacturer guarantees to replace the spreader sides if they ever rust out. Animal manure has been proven to be even more effective as a fertilizer than many commercial fertilizer, making this an important part of the farming scene today. But, art in the city is another aspect of the modern steel scene as illustrated by the photo at left. The 22½ foot-high Corten steel sculpting by Louis Nevelson graces the southeast entrance to Central Park in New York City. Valued at \$150,000 the sculpting was donated to the city by the artist.



**Culver's Four-County Trading Area's
Recognized Market Place**

RATES: Up to 25 words, \$1.00; 2 weeks, \$1.80; 3 weeks, \$2.40; 4 weeks, \$2.80. Up to 50 words, \$2.00; 2 weeks, \$3.60; 3 weeks, \$4.80; 4 weeks, \$5.60. Additional words 4c each. Minimum charge \$1.00. **RATES** quoted are for cash with order; add 50c if charged. Service charge of \$1 for blind ads in care of The Citizen. Classified display, \$1 per inch. Card of Thanks, In Memoriams, and Obituaries, \$1.50. Front page reading notices, up to 25 words, \$7.50. Local display advertising rate 70c per column inch. Ads accepted until 8 a.m. Wednesday, day of publication.

Memories From . . .

May 15, 1963

The New Park 'N Shop opens in Culver tomorrow and a three day celebration is planned with many items on sale. May 16 at 8:00 a.m. will mark the opening of the new store on East Jefferson Street situated in a brand new Stran-Steel building of latest design. James McCombs will manage the store, Harley Evans will manage the meat department and A. Schlatach will manage the produce department.

Four young ladies are competing the Jaycees Queen Contest. They are Cheryl Dillon, Culver; Martha McAllister, Culver; Patricia Kline, Culver; and Johanna Hughes, CMA. The queen will be chosen prior to the Jaycee Ball on June 15.

The After Prom party, sponsored by the Culver Lions at the Plymouth Country Club on Friday May 17, is for the juniors and seniors of Culver High School.

Culver Clothiers were robbed of nearly \$7,000 in clothing late Saturday night or early Sunday morning.

May 13, 1953

Services will be held this afternoon for Owen Banks, 67, who died Sunday in a Rochester hospital.

The Maxinkuckee Playhouse will open its fourth season here June 23.

At the regular meeting of the Culver Fire Department Monday evening at the Town Hall, a gold 50-year fireman's badge was presented to Monton H. Foss.

Services were held Monday in the Monterey Methodist Church for Mrs. Harriet Young who died Friday in a Rensselaer Hospital. She was the grandmother of Mrs. Ora Reed, of Culver.

Mr. and Mrs. Charles W. Wentzell, of near Leiters Ford celebrated their 50th wedding anniversary with a family dinner in their home Sunday.

May 19, 1943

OPA officials have announced that the maximum sugar allot-

ment for home canning will be 25 pounds per person in 1943.

Fire of unknown origin destroyed an automobile and garage damaged part of the side of the house at Donald Miller's late Wednesday night.

The heavy rains of the past week have resulted in flooded rivers all over the state with Logansport again suffering from the Wabash and Eel Rivers overflowing their banks. As in 1913, Logansport has called on the Culver Military Academy for their aid in rescuing marooned people and Tuesday afternoon six large cutters and a power boat were sent to the stricken city by special freight train.

Funeral services were held Monday afternoon at Herscher, Ill., for Mrs. Ben Oberlin's father, Charles Lane.

May 17, 1933

Plans for the annual flower garden and vegetable contest for Union Township school children have been announced by Mrs. J. Dick Newman, chairman of the contest.

The famous Black Horse Troop of the Culver Military Academy and escort of honor to many notables, has been invited to escort the Queen of the Century of Progress Exposition in Chicago on Saturday, May 27.

Catherine McFarland won first prize in the Culver Chamber of Commerce oratorical contest last night. Her subject was "The Rebirth of Europe."

The almost unprecedented season of rain during the past month or so has resulted in the farmers being thrown far behind in their spring planting.

May 16, 1923

Bess Ralston, formerly of Culver, won the city-wide championship in the South Bend swimming tournament.

The Loudon launches are at the depot pier, being placed in readiness for summer traffic.

Work will be resumed on the Memorial Library at the Academy after a suspension of work

recreation building to replace old one destroyed by fire last winter, has also been started. May 22, 1913

S. C. Shilling has traded old Ford car to Howard Mike for two lots in the Dillon and Medbourn addition.

A broncho struck with his feet at Dean Walker while was feeding it in the Pont livery stable last week. De was pretty badly bruised and a narrow escape from serious injuries.

The ladies are doing some fishing too. Mrs. Charles McLa recently caught a three-pound salmon off the depot pier.

The school census of Culver Union Township for 1913 shows gain of 18 in the former and less of 38 in the latter compared with last year. The population of the Township, between ages of 6 and 21, is 259 males, 225 females; total 484. In Culver the school population is 1 males and 127 females.



Unit 9 of the Marshall County Hospital Auxiliary met May 7 at the home of Mrs. Oscar Wesson. Members discussed various business and heard a report on smorgasbord which was held at Mrs. Robert Lindvall is group's president.

During the Mother's Day Ice Sunday, May 13, at Lutheran Church, 330 A Road, Culver, Robert Cur and Celeste Walter, both of Culver, will be confirmed. Rev. L. Sommer, pastor, will read the rite.

ITCHING LIKE MAD?

Get this doctor's formula. Zemo speedily stops torment of externally caused itching... of eczema, minor skin irritations, non-poisonous insect bites. Desensitizes nerve endings. Kills millions of surface germs. "De-itch" skin with Zemo-Liquid or Ointment.

FELKE FLORIST
Plymouth
Call Us Collect For
Flowers For Any
Occasion
We are as close as your phone
936-3165 COLLECT
j15tf

FOR RENT — Clean, nicely furnished three-room apartments. Also sleeping rooms. Ph. 842-3442. a19tf

USE
BOST
Dry Clean Carpet
and use instantly
Please
phone for information

**Boetsma Home
Furnishings, Inc.**

HUDON TYPEWRITER SERVICE — 103 W. LaPorte Street, Plymouth, Sales-Service-Rentals, Typewriters and Adding Machines. Repairs on all makes. Royal Portable dealer. Phone 986-2728. d10tf

**POWERS
REALTY**
Esther Powers Wampler,
Realtor
Mary G. Kriner, Saleswoman
Phone 842-2710
Culver, Ind.

FOR SALE — Gun type furnace oil burner to convert from coal to oil heat. Complete with stack control, damper pipe, etc. \$25. Call before 8:00 p.m. 842-2566. fa

THRIFT SHOP — Every Wednesday, 9:00 a.m. to 3:00 p.m., first building south of Van Horn Ford Garage on Coolidge Court, by Wesley United Methodist Women. fa

FOR SALE — Handmade afghans. Make lovely Mother Day gifts. Assorted patterns and colors. Also red sweater and hat set. Mrs. J. Anderlohr, 427 S. Main St., Culver. fa

**Thomas
Real Estate**
SALES
APPRAISING
MANAGEMENT
Before deciding, talk with us
Culver 842-2311
4ta12

WANTED — Garage moved. Leatha Shearer, 614 College Avenue, Culver, Ind., Phone 842-3639. fa

USED FURNITURE FOR SALE — 2 good sofas, dresser, 2 piece overstuffed set. Boetsma Home Furnishings, Culver. fa

FOR SALE — King size bed, black and white TV. Call 842-2669. fa

If It's
REAL ESTATE
See
C. W. EPLEY
REALTOR
450 Forest Place, Culver
Phone 842-2081
Sales - Rentals - Appraisals
M14a

FOR RENT — Three room house, completely furnished including heat and utilities. Available on or about June 15. Ideal for 1 or 2 persons. Phone 842-2684. m3tf

FOR RENT — Four room apartment, completely furnished including linens, a/c and utilities. Lake privileges. Available June 10 to August 19. m3tf

Mature Timber
We Buy Logs and Standing
Timber at Top Prices.
**Precision Pallet
& Skids, Inc.**
Walkerton, Indiana
Phone 586-3068
Nights 586-2688 or 586-3052
4tm31

PUPPIES FOR SALE — 3 week old Shorthair pointer puppies. Good hunting stock. Call after 5:00 p.m., 936-6397. fa

FOR SALE — Two lots close to town and lake. \$1200 for both. Phone 842-2620 Henry Hinkle. fa

BIG GARAGE SALE — Baby clothes, high chair, dressing table, stroller, other baby items. All sizes clothing. Formal, toys, books, 7-piece Formica kitchen set, gas stove, misc. items. Thurs., Fri., Sat., May 10, 11, 12. 8:00 a.m. - 8:00 p.m. 1 mile east of Burr Oak in Hibbard. fa

FOR SALE — Two green wool Lee's carpets with pads. One approximately 12' x 14'. Best offer. Call 842-2428. fa

FOR SALE — 1967 fold-down wheel camper, \$250.00. Call 842-2944. fa

FOR SALE — '65 Ford Mustang, 3-speed, 6 cylinder, blue with interior. Needs work, very reasonable, make offer. 842-3592. fa

FOR SALE — Antique ice box. Call 842-3423. fa

HELP WANTED — Culver Street Department man needed for full-time work in water-street department. Must live in Culver. Apply Clerk's Office. a26

FOR SALE — Vanity dresser with large mirror and bench. Call 842-2301. fa

FOR RENT — Three room furnished apartment. Reference and security deposit required. Phone 842-2371. m10tf

DAIRY FARM HERDSMAN wanted on large dairy farm. Must be experienced and have management ability. Milker also wanted. Phone 616-698-8562. Voetberg Dairy Farm, 7052 Kalamazoo Ave., S. E., Caledonia, Mich. 49316. m10

GOOD SUPPLY of good quality corn for sale. Voetberg Dairy Farm, 7052 Kalamazoo Ave., S.E., Caledonia, Michigan 49316. Ph. 616-698-6147 or nites. m10

SAY "GOOD MORNING" WITH A PENNSYLVANIA DUTCH BREAKFAST



Concordgrape Shrub, inspired by a Pennsylvania Dutch drink, is a great way to start the morning. Tasty Concordgrape juice is the main ingredient for this frosty, refreshing eye-opener. Served with crumb cake and bacon, it's a nice change of pace for breakfast.

Eating in the Pennsylvania Dutch country is a true pleasure. Homemade goodies, ranging from Chow Chow and Apple Butter to Shoo-fly Pie and Sticky Buns, fill the market places. Even if a visit to the eastern hills of Pennsylvania is not possible, one can enjoy their simple, long-cherished foods at home.

Take breakfast, for instance. The Pennsylvania Dutch bring greatness to a simple morning meal. A typical farm breakfast might include corn meal

mush or scrapple, potatoes, ham or bacon, fruit and cereal. In addition, there might be fritters, crumb cakes, shoo-fly pies or cookies.

For your Pennsylvania Dutch breakfast, select a few of the items that intrigue you most, perhaps ham, cereal and crumb cake. Add an extra special touch to convenient crumb cake mix by placing sliced apples on top before baking.

In place of fruit, start breakfast off with a favorite Pennsylvania Dutch beverage —

Shrub. Here are two modern versions, both made with flavorful and convenient Concordgrape frozen concentrate. One is flavored with pineapple and lime juices, the other with gingerale and lemon or orange sherbet. In either case, the Concordgrape Shrub is cool, refreshing and icy — and a great way to start the morning.

CONCORDGRAPE SHRUB #1

- 2 cups water
- 1/2 cup pineapple juice
- 1 tablespoon lime juice
- 1 can (6 ounces) frozen concentrated Concordgrape juice, thawed and undiluted
- Lime slices
- Pineapple spears

Combine water, pineapple juice, lime juice and Concordgrape juice. Pour into refrigerator tray, setting control at the coldest position. Chill several hours, or until heavy crystals form throughout mixture. Do not let mixture freeze completely. Beat mixture with rotary beater, but do not allow to melt. Serve immediately. Garnish with lime wedges or pineapple spears. Makes 4 servings.

CONCORDGRAPE SHRUB #2

- 1 can (6 ounces) frozen concentrated Concordgrape juice
- 3 cans water
- 1 bottle (12 ounces) gingerale, chilled
- 4 scoops lemon or orange sherbet
- 4 mint sprigs

Reconstitute frozen Concordgrape juice according to label directions. Add gingerale. Pour into glasses; add a scoop of sherbet to each glass. Garnish with a sprig of mint. Makes 4 servings.

Bonds are for single girls who want to save a little money.



Sometimes saving is awfully hard for a single person. It's so much easier to give in to temptation. That's why the Payroll Savings Plan is such a good idea. Your money's set aside and used to buy U.S. Savings Bonds before you can get your hands on it. Join the Payroll Savings Plan. It helps you save in spite of yourself.



Take stock in America.

Buy U.S. Savings Bonds

Now E Bonds pay 5½% interest when held to maturity of 5 years, 10 months (4% the first year). Bonds are replaced if lost, stolen, or destroyed. When needed they can be cashed at your bank. Interest is not subject to state or local income taxes, and federal tax may be deferred until redemption.

NOTICE TO MAINTENANCE CONTRACTORS

Notice is hereby given that sealed proposals for the construction of certain highway improvements as described below, will be received by the Indiana State Highway Commission, Room 1313, in the Indiana State Office Building, Indianapolis, Indiana, until 10:00 A.M. Eastern Standard Time, on the 22nd day of May, 1973, and all proposals will immediately thereafter be taken to the Great Hall on the Main Floor at the Atkinson Hotel, Illinois Street at Georgia Street, where they will be publicly opened and read.

The Indiana State Highway Commission hereby notifies all bidders that it will affirmatively insure that in any contract entered into pursuant to this advertisement, minority business enterprises will be afforded full opportunity to submit bids in response to this invitation and will not be discriminated against on the grounds of race, color, or national origin in consideration for an award.

CONTRACT M-9420 - Bids are invited on Surface Sealing Bridge Decks in the LaPorte District on the following:

LAKE, LAPORTE, STARKE AND MARSHALL COUNTIES - US 30 over Hart Ditch, 0.3 mile east of Indiana-Illinois State Line, east to US 30 over Yellow River in Marshall County (11 structures).

PORTER COUNTY - US 20 over P.C. RR and Jct. SR 520 E. to US 20 over US 31 (21 structures).

STARKE AND PORTER COUNTIES - SR 8 over Kankakee River and Sand Hook Ditch (2 structures).

PORTER COUNTY - SR 49 over Kankakee River and US 20 (2 structures).

PORTER COUNTY - US 12 over Burns Ditch & P.C. RR and Bethlehem Steel Entrance (4 structures).

STARKE AND LAPORTE COUNTIES - US 35 over Robbins Ditch, 2.5 miles S. of Starke-LaPorte County line, N. to US 35 over Trail Creek (7 structures).

NEWTON AND LAKE COUNTIES - US 41 over Beaver Lake Ditch, 3.1 mile S. SR 10; N. to US 41 over L & N RR (6 structures).

STARKE AND ST. JOSEPH COUNTIES - SR 23 over Yellow River, 0.34 mile S SR 10; N. to SR 23 over Mishawaka Ave. (6 structures).

MARSHALL COUNTY - US 31 over Eaker Ditch, 3.07 mi. S. US 6 (2 structures).

LAKE COUNTY - US 24 over Hoagland Ditch.

FULTON COUNTY - SR 17 over Tippecanoe River.

JASPER COUNTY - SR 10 over I-65.

JASPER COUNTY - US 231 over Howe Ditch.

Plans and Proposals may be examined at the Office of the Indiana State Highway Commission in the State Office Building, Room 1313, Indianapolis, Indiana. **INDIANA STATE HIGHWAY COMMISSION** 2m17

LEGAL NOTICE OF PUBLIC HEARING

Notice is hereby given that the Local Alcoholic Beverage Board of Marshall County, Indiana, will at 1 PM on the 15th day of May, 1973, at the location hereinafter set out at Commissioners Room, Court House in the City (or town) of Plymouth, Indiana, in said County, begin investigation of the application of the following named persons, requesting the issue of the applicant, at the the Alcoholic Beverage Permit of the class hereinafter designated and will, at said time and place, receive information concerning the fitness of said applicant, and the propriety of issuing the permit applied for to such applicant at the premises named.

Veterans or Foreign Wars Post 6919 by Alan G. Cornett Comdr, 524 N. Liberty St. Culver (Club) Beer, Liquor & Wine Retailer 103 E. Washington St., Culver, IN.

SAID INVESTIGATION WILL BE OPEN TO THE PUBLIC, AND PUBLIC PARTICIPATION IS REQUESTED.

INDIANA ALCOHOLIC BEVERAGE COMMISSION

by **ARTHUR R. ROBINSON**
Executive Secretary
JAMES D. SIMS
Chairman

BIRTHS

Mr. and Mrs. James Allen, ver, a son, May 2.
Mr. and Mrs. Kevin Coe Culver, a daughter, May 2.
Mr. and Mrs. Timothy Wa Culver, a son, May 7.

Don't need it - why keep it use our classified ads

SALE Freezer & Refrigerator SALE

Just received 50 chest & upright freezers in all sizes, in 7 - 9 - 11 - 15 - 19 - 20 - 23 - 28 cu. ft. in Amana, GE, Hotpoint & others. We have the thin size freezers that will go through a 21 1/2 inch door. Our \$195 freezers are reduced to \$158. Also Maytag washers, dryers and dishwashers. Bring your truck or trailer and pick up and save even more. We have sold over 3,000 freezers and refrigerators in this area.

P.S. We have 5 used freezers, \$35 and up.

Carl Shee's Electric

119 E. LAPORTE ST.

Downtown Plymouth Display Day-Nite Service
Phone 936-3300 Phone 936-3006

Argos Phone 892-5860

Rochester Phone 233-5550

Before You Buy, Give Us A Try. You'll Be Glad You Did

EL DANCHEO
Theater
Wed. thru Tues., May 9 - 15
Great for All
7:15 & 9:00
SOUNDER
Rated "G"

FISH AND TENDERLOIN FRY
(All You Can Eat)
SAT., MAY 12
5:00 - 8:00 p.m.
Culver Jr. High
Carry-Outs Available
School Gym
By
CULVER COMMUNITY MUSIC BOOSTERS

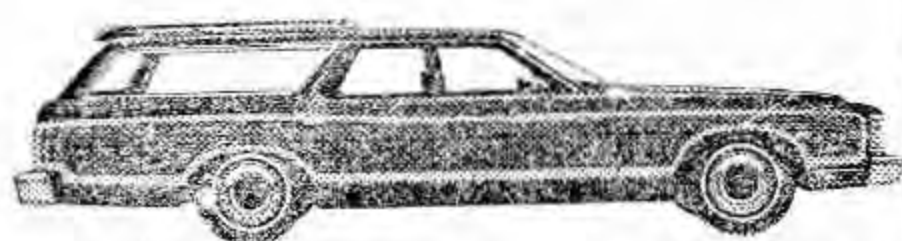
Helps Shrink Swelling Of Hemorrhoidal Tissues

caused by inflammation

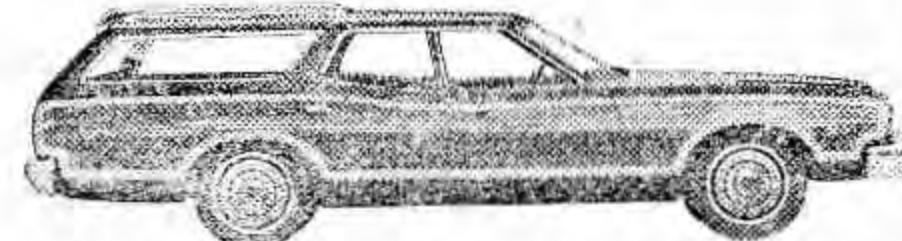
Doctors have found a medication that in many cases gives prompt, temporary relief from pain and burning itch in hemorrhoidal tissues. Then it actually helps shrink swelling of these tissues caused by inflammation. The answer is Preparation H®. No prescription is needed for Preparation H. Ointment or suppositories.

Your Ford Team's 1¢ Wagon Sale is back!

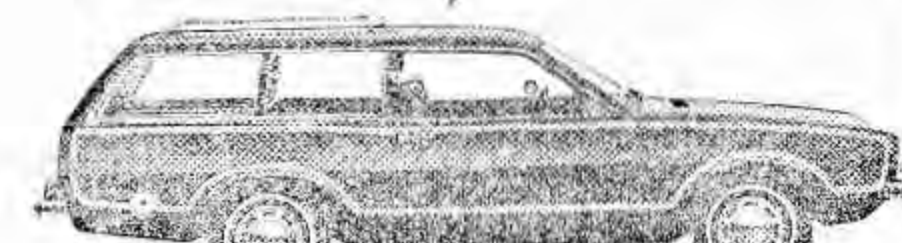
You get a great deal on any new Ford wagon.



Ford LTD Country Squire. The top-of-the-line in wagon comfort, luxury and Ford's quiet quality. A leading choice of American families.

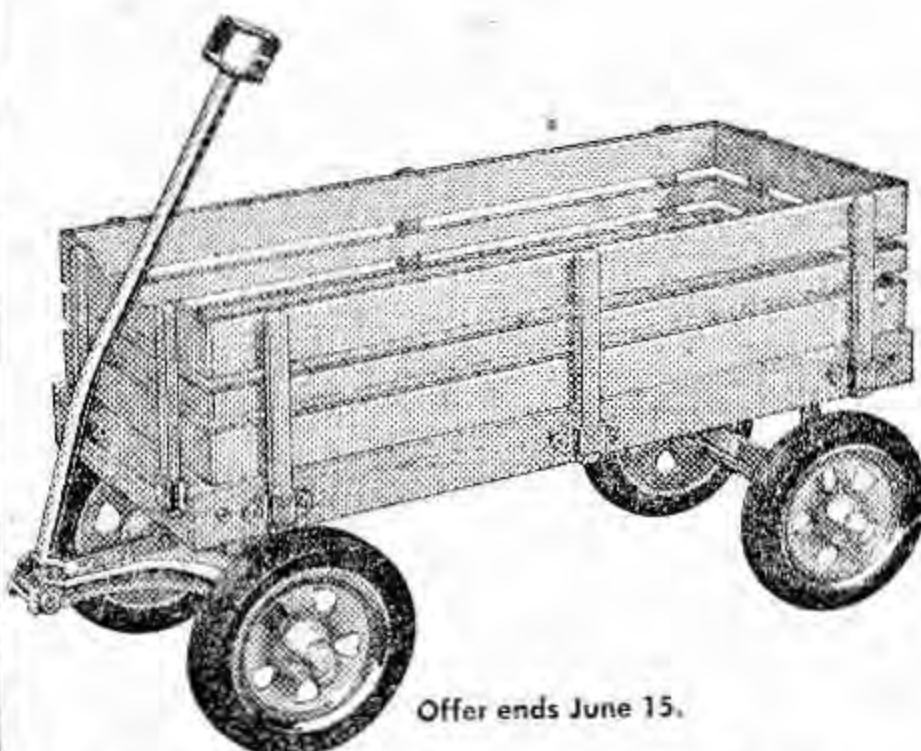


Ford Gran Torino Squire. The solid, quality-built mid-size wagon. A lot of car... and stopping room... for a mid-size price.



Ford Pinto Wagon with Squire Option. Now there's a Ford wagon at a Pinto price. The tidiest Ford... and an upkeep, big economy.

The kids get a great deal on this one...1¢.



Offer ends June 15.

Your Ford Team's 1¢ Wagon Sale made so many people happy last year that we've brought it back for you again this year.

Just buy any new Ford station wagon and get the little red wagon you see here... a \$29.95 value... for just 1¢. Your Ford Dealer will make you happy with a great deal on the wagon you want—from the economical little Pinto on up to the luxurious Ford LTD Country Squire. And he'll make the kids happy with the deal they get on their wagon.

Stop in and see your Ford Dealer soon! He'll make you happy... for as little as a penny!

See your Ford team, the Professionals.

Van Horn Ford - Mercury Sales
Culver, Indiana

GRETTHER'S
"ACROSS" from THE BANK
Phone 61-2-2262
FOOD MART
Quality Meats
106 N. MAIN ST. CULVER

Oscar Mayer All Meat

Wieners lb. **89¢**

Fresh Lean **Ground Beef**
lb. **95¢**

Eleona Platter **Sliced Bacon**
lb. **99¢**

Fresh Lean **Ground Chuck**
lb. **\$1.05**

Swift's Premium - Arm **Swiss Steak**
lb. **\$1.09**

Crystal Springs - Packed In Quarters

Butter lb. **75¢**

Richelieu Pieces - Stems 4-oz.
Mushrooms
4 for **\$1.00**

Orchard **Orange Drink**
1/2 gal. **49¢**

Three Diamond - No. 2
Pineapple
4 for **\$1.00**

303 Can **Richelieu Corn**
5 for **\$1.00**

Coca-Cola 8 16-oz btl. **79¢**
Plus Bottle Deposit

Golden Ripe **Bananas**
2 lbs. **29¢**

Debbie **Liquid Detergent**
qt. **29¢**

Dixie Belts - 1-lb. Box
Saltine Crackers
lb. **33¢**

Purex **Bleach**
gal. **59¢**