

15¢

# THE CULVER CITIZEN

VOLUME 80, NUMBER 3

JANUARY 17, 1974

## Chamber Meets

### NEW OFFICERS SWORN

Dr. Thomas Pugh, Culver dentist, was installed as the new president of the Culver Area Chamber of Commerce at a luncheon meeting this past Tuesday. Also installed as 1974 officers were: Mr. James Kalinke, First Vice-President, Capt. Alden Whitney, 2nd Vice-President, Mrs. Norman Kelly, Treasurer, Mrs. Ted Strang, Secretary, and Col. Kermit Zeig, Director.



DR. PUGH

Outgoing President Robert Rust opened the meeting with a report on inquiries that have been made by the Kiwanis International into the feasibility of organizing a Kiwanis chapter in Culver. A meeting will be held at 12:00 noon on Wednesday, January 23rd at Pinder's Restaurant to consider the matter.

After reports by the Secretary and Treasurer, the Oath of Office was given to the newly elected officers, and the gathered membership pledged their support during the year.

The meeting was then handed over to Dr. Pugh, who spoke briefly about the directions the Chamber might take during the year. He expressed a desire to tackle Culver's problems a few at a time, and mentioned three that he felt deserved the Chamber's immediate attention: the problem of finances for the Chamber, the burden of the parking lot currently being sponsored by the Chamber, and the results of the Jaycees' recent survey, which showed that only 25% of every local dollar actually stays in town, the rest

being spent elsewhere.

Chamber members were reminded that 1974 dues are now payable at a rate of \$25.00 per year. It was decided to keep membership rates the same, and raise funds for the Chamber by recruiting new members, rather than by raising dues.

After a brief Board of Directors meeting, the meeting was adjourned.

### School's Out!

The first semester of the 1973-74 school year came to a close for Culver Community High School today, January 17th. After the usual rigorous examination period, CCHS students will be rewarded with a day off Friday, so that their teachers may grade papers and complete reports. Second semester classes will begin at the regular time on Monday, January 21st.

The second semester of the school year will see the organization of the newly authorized Audio and Visual Laboratory Addition to the high school. The library will no longer be limited to printed material. This new addition as a part of the Instructional Center will mean that some hundred film strips, audio and video cassettes will soon be available for student use. The laboratory will be under the direction of Mrs. Eva Belle Surber and assisted by Mrs. George Wamsley. The Audio-Visual materials now being acquired will cover a wide range of subjects and will greatly enlarge the services provided by the high school library.

### TRI KAPPA TO MEET MONDAY

The Culver Tri Kappa will meet Monday, January 21st at 8:00 p.m. Hostess for the evening will be Mrs. Thomas Pugh, 831 East Lake Shore Drive.

### CULVER TO PARTICIPATE IN EMPLOYMENT SURVEY

A sample of households in this area will take part in a nationwide survey on employment and unemployment to be conducted the week of January 14-18 by the Bureau of the Census. It was announced recently.

The Bureau is part of the U.S. Department of Commerce's Social and Economic Statistics Administration.

The survey is taken monthly by the Bureau for the U.S. Department of Labor. The households interviewed are scientifically selected to represent a cross

Statistics on conditions in the labor force from month to month provide a continuing measure of the economic health of the nation. In November, for example, the unemployment rate moved up to 4.7 percent from 4.5 percent in October. Total employment, at 85.7 million, seasonally adjusted, was unchanged after large increases in September and October. Since November a year ago, it has risen over 3 million.

Information supplied by individuals participating in the survey is held confidential by law and is used only to compile statistical totals.

The interviewer who will visit households in Culver is Mrs. Dorothy Elton.



NOT ON YOUR (OR MY) LIFE! answers our Editor, caught right after an invitation to try on a magician's guillotine for size. Read about our visit to a magic factory on page eight. CITIZEN photo

## Jr. Hi BB Tourney Pairings

### JUNIOR HIGH TOURNEY THIS SATURDAY

Culver will be host school for this year's seventh and eighth grade tourney, to be held Saturday, January 19th at the Culver Junior High School. Four of the top eighth grade teams in Northern Indiana will battle for the championship trophy. The combined won and lost records of Argos, Bremen, Culver and Talma eighth grade teams are a fantastic 27 wins and 10 losses. Bremen's record is 3-6, including an overtime loss to Culver. Argos' record is 7-2, with a loss to Culver. Talma's record is 9-1, with a loss to Argos, and Culver's record is 8-1, with a loss to Talma. These teams have defeated such area teams as Rochester, Plymouth and Warsaw. It has been a couple of years since a Junior High Tourney has been held in Culver and this promises to be a good one. Doors will open at 8:30 a.m. Admission is \$1.00 which will cover all six ballgames.

The seventh grade records are as follows: Argos 4-5, Bremen 6-3, Culver 2-7, and Talma 6-4. The Culver team will certainly be the underdog in the seventh grade tourney but will be trying hard to pull an upset. The refreshment stand and cafeteria will be open during the tourney. The Culver Junior High Pom-Pom Girls will perform during the tourney. Come and support our fine teams.

### WEATHER SEMINAR COMING TO ANCILLA COLLEGE

Mr. Clay Russell, meteorologist for the National Weather Service in South Bend and former Air Force Meteorologist, will present a weather seminar at Ancilla College on Wednesday evening, January 23rd, at 7:30 p.m.

The free seminar will be of interest to the person who would like to improve his knowledge of the weather and forecasting. It should be of special interest to the

PAIRINGS		
Culver		SEVENTH
9:00	3:00	
Bremen		
Argos		
10:15	4:30	
Talma		
Culver		
11:45	4:30	EIGHTH
Bremen		
Talma		
1:00	4:30	
Argos		

outdoorsman, farmer, fisherman, construction worker, pilot or any other person who needs a reasonably accurate short-range weather forecast.

The seminar is designed to prelude a two-phase adult education weather series to be held in February. Phase I will further involve the student with basic weather principles and Phase II will be an advanced course on aviation meteorology.

Time will be set aside in each session to pose questions. No

grades or tests will be given. The purpose of the seminar is to present an uncomplicated explanation about our favorite subject - the weather.

Ancilla College is located seven miles west of Plymouth, just south of Route 30 near Donaldson.

For additional information, call (219) 936-9936. Reservations for this interesting and informative seminar are limited and will be taken on a first come, first served basis.



## One Man's Opinion

### Reader Contributions

#### Ballad of John and Bob

The Watergate's saddest song  
Is that Honor seems to have gone  
When the trained legal mind cannot define  
Or distinguish the Right from the Wrong.

#### The Return of the Swallow

There are some of the Nixon bunch  
Who fall for the grin of that dunce  
But the Simian smile with its foxy guile  
Elicits the loss of my lunch.

#### The Prince of Peace

No need to hail our great King  
Or have the bells loud ring  
This "lord of peace" (a PR release)  
Doth his own high praises sing.

#### Nixon Profile

One need not be a psychiatrist  
Or a perceptive character analyst  
To detect the guile in that wiley smile  
On the face of that Whitehouse Hypnotist.

#### Watergate Ballad

The mistake in the Watergate song  
Is that Fidelity is noble, if strong.  
But now we may see that the need is to be  
Unfaithful to the Wrong.

#### Key Biscayne

The crafty King of Key Biscayne  
Who lusts for Power - and lusts for Fame  
Enhances, improperly, his personal property  
With dough from the public domain.

#### A Capitol Crime

There was a mad madam named Milhous  
Who kept a political whorehouse\*  
Tho a Virgin of Purity the verdict is, "Guilty,  
Of running a disorderly Whitehouse."

\*(favours granted for fees)

#### The Foreign Diplomat

When our Head of State was abroad  
Submitting to Russian fraud  
Cubans took part in the Watergate rout  
While the Whitehouse was ruled by two Krauts.

#### Potomac Poetic Emetic

I do not mind the tax rise  
Or the cost of all that one buys  
But my stomach ejects when the Whitehouse expects  
That we swallow all the sly lies.

#### Washington Whodunit

Now it is easy to see  
How Watergate came to be  
Detective Dick has been watching the tricks  
On the James Bond late TV.

#### Impeachment

The pursuit of the House is inane  
Since impeachment is plainly in vain  
He could so convincingly employ the insanity ploy  
And you cannot convict the insane.

#### Nixon the Vixen

This fox with the sliest endeavor  
Has garnered two villas - plus treasure  
And to all of the queries, the answer varies  
Elusive, and only by pressure.

## THE CULVER CITIZEN

Established July 13, 1894

Published Every Thursday Except For  
The Week of July Fourth And The Week Of December Twenty-Fifth By The  
Culver Citizen Corporation  
Post Office Box 90, Culver, Indiana 46511  
All Hours Telephone (219) 842-2297  
Second Class Postage Paid at Culver, Indiana 46511

### SUBSCRIPTION RATES

One Year .....\$5.00 Two Years .....\$8.50  
Fifty Cents Additional For Subscriptions Outside Indiana

## OBITUARY

### UUNO P. WAHAMAKI

Mr. Uuno P. Wahamaki, 62, of Route 2, West 17th Road, Culver, passed away Tuesday, January 8, 1974 at 10:00 a.m. in his home of a sudden heart seizure.

Mr. Wahamaki was born September 19, 1911, in Fitchburg, Massachusetts, to Samuel and Esther Wahamaki. He had lived in Culver since 1966, coming from Oshkosh, Wisconsin. He was retired from Rockwell-International of Knox, and was a member of the Plymouth Country Club.

He was married April 23, 1935, in Detroit, Michigan to Blanche A. Nachtman. Survivors include two sons, Warren L. Wahamaki, Milwaukee, Wisconsin, and Kirk M. Wahamaki, Terre Haute; one brother, Sven Wahamaki, Wixom, Michigan; and one granddaughter, Amy Wahamaki, Milwaukee, Wisconsin.

Funeral services were held at the Richardson-Bird Funeral Home, Walled Lake, Michigan, on Saturday, January 11th. Burial was in Oaklandhills Cemetery, Novi, Michigan. The Bonine Funeral Home, Culver, was in charge of local arrangements.

## LEGAL NOTICE

CLAIMS ALLOWED BY  
THE COUNTY COMMISSIONERS  
January 7, Meeting-1974

COUNTY GENERAL  
DRAINAGE BOARD  
International Business Machines \$45.25

COMMISSIONERS  
Robertson Insurance Agency 18.00  
PERF Insurance 14.07  
PERF S.S. (Judicial) 1,254.26  
PERF S.S. 6,877.14  
PERF 6,309.61  
Ass'n Ind. Counties 600.00  
Eugene Stanley 200.00

COURT HOUSE  
City of Plymouth 84.46  
Delp Electric 91.19  
Simon Brothers 39.30  
Westron Corp. 153.50

COUNTY HOME  
Bernard Food Ind., Inc 168.15  
C. Grimm 12.00

HISTORICAL SOCIETY  
City of Plymouth 25.46

SPECIALS  
J. Anderson 14.00  
PERF EEA 73.15  
R. Eck 287.13  
PERF S.S. 657.02  
Howell Construction Co. 14,356.70  
Taylor Construction Co. 20,120.22  
H. R. Speyer, Co. Treasurer 2,235.58  
W. A. Wilcockson 1,436.68

COUNTY HIGHWAY  
Zehner Mower 294.82  
Amer. Oil 5,688.39  
W & W Truck Sales 2,337.50  
Blue Cross/Blue Shield 453.09  
Lawmaster Pontiac 2,039.22

WELFARE DEPARTMENT  
N.I.P.S.Co. 62.90  
Treas. Marshall Co. 350.00

Filed this 7th day of January, 1974  
Robert Reese  
Marshall County Auditor

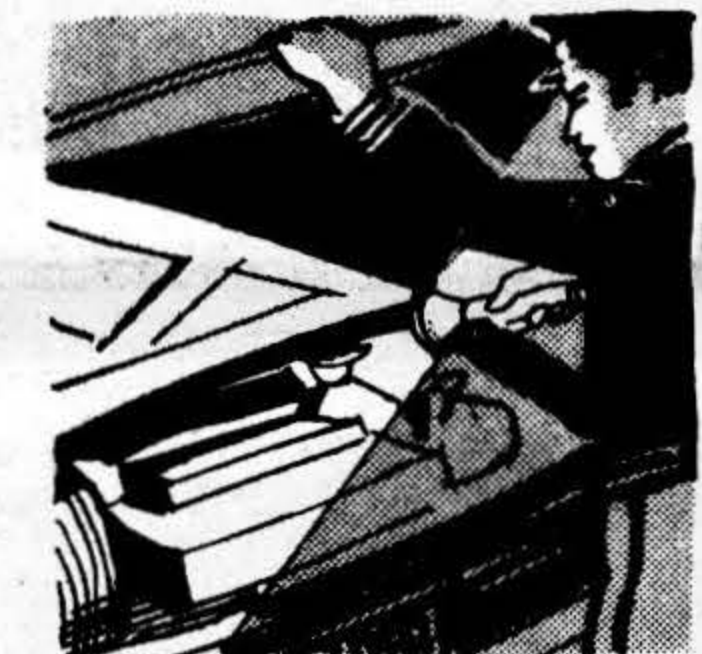


### "Tainted" Car

Suppose you lend your car to a friend, who uses it to carry narcotics. If he is caught, could your car be confiscated—even though you were unaware of your friend's illicit intentions?

State laws on narcotics often do say exactly that. The car itself is considered tainted by its misuse, and is therefore subject to seizure.

From time to time, a luckless car owner will put up a fight in court. He will argue that he should not be penalized for someone else's transgression.



But most courts have upheld the confiscation of the car. Two reasons are commonly given:

1) that this will teach car owners to be more careful about lending their cars to untrustworthy friends; and,

2) that in fighting the drug problem, the state should not have the difficult task of proving the car owner's complicity.

As one judge put it: "The traffic in narcotics is so great an evil as to justify the drastic penalty of confiscation. The public interest outweighs the loss suffered by the innocent car owner."

Usually, however, an automobile can be confiscated only if it was "caught in the act." Thus, your car could not be taken away merely because the authorities find that someone had used it unlawfully the day before yesterday.

Furthermore, you are in a stronger position if the car was not just borrowed but was taken without your consent.

In one case, a youth was caught carrying narcotics in his mother's car. But when authorities tried to seize the car, the mother pointed out that her son had taken it against her express orders.

Under these circumstances, the court felt confiscation was simply too drastic. The court said that would be "an arbitrary invasion of (the mother's) property rights protected by both the state and federal Constitutions."

A public service feature of the American Bar Association and the Indiana State Bar Association. Written by Will Bernard.

© 1974 American Bar Association

## SUBSCRIPTION ORDER

Name \_\_\_\_\_

Address \_\_\_\_\_

City \_\_\_\_\_ Zip \_\_\_\_\_

☐ One Year \$5.00 ☐ Two Years \$8.50

ADD FIFTY CENTS FOR SUBSCRIPTIONS OUTSIDE INDIANA

SEND TO: The Culver CITIZEN, Post Office Box 90, Culver, Indiana 46511  
Please allow three weeks for entry of new subscription

## CROSSWORD

- ACROSS**
1. Shaft
  6. Leader of Israelites
  11. Command
  12. Adult insect
  13. Old Norse work
  14. Dwelt
  15. Speak
  16. Changes
  17. Bone (anat.)
  18. A chasm
  20. Most stupid
  22. Malt beverage
  25. "Tempest" sprite
  26. A newspaper
  28. Japanese coin
  29. Not severe
  31. Telegraphed
  32. Tellurium (sym.)
  33. King's residence
  36. Pronoun
  37. Friend, in Spain
  38. Wild hog
  40. Domesticates
  41. Think
  43. Darken
  44. People of Britain

- DOWN**
1. Thus
  2. Hoard
  3. Mary Baker

**Answer**

1	2	3	4	5	6	7	8	9	10
11					12				
13					14				
15					16				
17					18				
20					21				
25					26				
28					29				
33					34				
37					38				
40					41				
43					44				



# Society

## GREATER MARSHALL COUNTY CRUSADE

Churches of the Marshall County area are joining together to present a united witness for Jesus Christ in the form of an evangelistic crusade. Dr. Ford Philpot of the Ford Philpot evangelistic association along with the Fishermen and Sam Davis will lead us in a week long crusade which begins on Easter Sunday evening April 14th and continues through Sunday evening April 21st. February 5th, Tuesday evening, will be the evening when the evangelistic team will be introduced to Marshall County. It is anticipated that one thousand people will gather for a 6:30 p.m. banquet at the National Guard Armory in Plymouth for this event.

Dr. Philpot, a business man whose dramatic conversion led him into the ministry of evangelism, will speak to us on that evening. The Fishermen, a singing trio led by Winston Pike, will be on hand to furnish the music. Sam Davis, the youth evangelist, will be introduced as well.

General Chairman for the crusade is Mr. Robert Slack of Plymouth. Rev. E. Stanly Smith of the Plymouth Church of the Brethren and Rev. Dean Pickett of

the Shiloh Wesleyan Church serve as banquet co-ordinators. The crusade committees are now being organized of representatives for all the Marshall County communities. Tickets for the banquet are being distributed to local churches by a representative in each area. They are: Rev. Robert Hansen, United Methodist Church in Argos; Rev. Robert Klatt, Country Church in Bourbon; Rev. Jack Kline, Brethren Church in Bremen; Rev. John Krueger, United Church of Christ in Culver; Rev. Cecil Craig, Church of God in LaPaz; Rev. E. Stanley Smith, Church of the Brethren; Rev. W.E. Vannest, Church of the Nazarene in Plymouth; and Rev. Dean Gilkerson, Wesleyan Church in Walkerton. Anyone may obtain banquet tickets from these men.

Rev. Bobby McFalls, Crusade Director, has been working with the crusade executive committee to arrange the schedule which involves several events prior to the crusade itself. Included in these will be a "Back to Bethel" day, county wide prayer retreats, and spiritual preparation rallies. Questions or inquiries may be made to Rev. Robert Hansen in Argos. We would rejoice in the participation of all churches and individuals in the greater Marshall County area.

## LIFE

The Christian Science Lesson-Sermon is on LIFE this week. It includes Rev 22:17 - Let him that is athirst come. And whosoever will, let him take the water of life freely. Acts 17:28 - For in Him we live and move and have our being. Also from the Christian Science Textbook, by Mary Baker Eddy - The understanding that Life is God, Spirit, lengthens our days by strengthening our trust in the deathless reality of Life, its almightiness and immortality.

The members of this church at 428 South Michigan, Plymouth, would be happy to welcome you at this service at 10:30 a.m. Sunday. Sunday school for children to 20 years is at the same hour.

## STAY AWAKE ITCHING?

Let doctor's formula stop it.

Zemo speeds soothing relief to externally caused itching of eczema, minor rashes, skin irritations, non-poisonous insect bites. Desensitizes nerve endings. Kills millions of surface germs, aids healing. "De-itch" skin with Zemo, Liquid or Ointment. Quick relief, or your money back!

## WHITE ELEPHANT SALE HELD BY JUNIOR WOMEN

The Maximkuckee Junior Women's Club met at the Grace Church on Monday evening with one guest, Mrs. H. Deodzinski, and one new member, Mrs. James Weirick. During the meeting contributions were allocated to the Indiana Kidney Fund, Sangralea Valley, and the Indiana Blind Prevention Center. A new conservation project of lakeshore beautification was discussed.

The new officers for 1974-75 were elected. They are: Mrs. Larry Berger, President; Mrs. Roy Shepard, Vice President; Mrs. William Eppley III, Secretary; Mrs. Charles Cullins, Treasurer; and Mrs. Kenneth Miller, Jr., Trustee.

The installation of new officers will be held in May.

After the meeting refreshments were served by Mrs. Norman Dumaine and Mrs. J. Hass. A white elephant and surprise one pound auction followed under the direction of Mrs. Michael Overmyer. Proceeds from the sale go toward the couples bowling party in March.

The next meeting will be at the home of Mrs. John Krueger with Rev. Krueger presenting a book review.

## SENIOR CITIZENS MEETING

The Culver Senior Citizens met at 1:00 p.m. Tuesday, January 8th in Zion Hall of Grace United Church of Christ with twenty members present. Members came from Culver and Monterey. The group spent the afternoon playing various games. Dessert was donated by Edna Dickson of Rochester and served by Mrs. John Kowatch.

## RAINBOW GIRLS ELECT

Twyla Shaffer was elected Worthy Advisor Monday for the February to May term of Culver Assembly. Order of Rainbow for Girls.

Also elected were: Judy Kemple, Worthy Associate Advisor, Susan Middleton, Charity, Martha Davis, Hope, Kelly Middleton, Faith, Debbie Bernhardt, Secretary, and Karen Kowatch, Treasurer.

Installation of officers will be Saturday, February 2nd at 7:30 p.m. in the Masonic Temple.

Worthy Advisor Debbie Bernhardt presided from a podium on which was placed a single lighted candle. Vicki Cornett, junior past Worthy Advisor, was escorted behind the Altar to sign the traditional page in the Bible. As she signed the Book, Mother Advisor Mrs. James Grover read "Candle Glow" and "Quench Not the Candle of the Spirit" in her honor. Later, the formal closing march was held in her honor.

After the meeting, the Rainbow Board met and elected Mrs. J. Bill Allen as the Mother Advisor for the coming year.

## Hints on

## HEALTH

from the

Indiana State Medical Association

### CRADLE CAP

THE medical name for cradle cap is seborrhea of the scalp. Seborrhea can occur on other parts of the body, particularly behind the ears, on the cheeks and on the calves. Scaliness and discoloration are related to the same condition.

The precise cause of seborrhea is unknown but it does seem to bear some relation to allergy. Most children with seborrhea have a family history of allergy. In later years they may develop eczema or a respiratory allergy.

As a general rule seborrhea improves in sunshine and gets worse in winter. There are a number of shampoos and ointments that are effective in controlling seborrhea. Since they do not "cure," they must be used repeatedly.

## CULVER POLICE DEPARTMENT Monthly Report: December, 1973

### Patrol:

Miles driven: 1,532 miles.  
Gallons of gas used: 199 gal.  
Hours on Patrol: 620 hours.  
Hours on call: 124 hours.

### TRAFFIC:

Verbal warnings.....5  
Parking tickets issued.....5  
Misc. traffic complaints.....7

### INVESTIGATIONS:

Criminal.....12  
Accident.....10  
Miscellaneous.....10

Funeral Details.....3  
School Activities.....2  
Courts & Trials.....1  
Fire Calls.....4  
Motor Checks.....4  
Messages Given.....1  
Ambulance escort.....1  
Assist to other departments.....5  
Premises check (action taken).....3

### COMPLAINTS ANSWERED:

Dog Complaints.....6  
Domestic.....1  
Juvenile.....6

CULVER POLICE DEPARTMENT  
R. WOODWARD, MARSHALL  
1/14/74

IF WE DON'T  
HAVE IT TODAY.....  
WE'LL HAVE IT  
IN THE MORNING!

Overnight delivery  
available from five area  
warehouses gives you  
ready access to nearly  
every automobile need...

CULVER AUTO SUPPLY

Call Us First — 842-3658

ABSENT FROM THE  
BODY AND PRESENT  
WITH THE LORD

Thinking deeply about the  
spiritual facts of man's true  
nature will heal and bless us  
all.

Broadcast this week over  
many stations including:

WSBT 960 kc  
9:15 a.m. Sunday

the TRUTH  
that HEALS  
a Christian Science series

# Church Directory

### CULVER BIBLE CHURCH

Rev. Edward Clark, Pastor.  
Sunday School 9:30 a.m., Morning  
Worship 10:45 a.m., Young People's  
Service 6:15 p.m., Evening Worship  
7:00 p.m., Wednesday Night Prayer  
Meeting and Bible Study 7:30 p.m.,  
Thursday Night Home Bible Study 7:30  
p.m.

### UNION CHURCH OF THE BRETHREN

At the corner of State Road 17 and  
108 Road. Bert Cramer, Superinten-  
dent. Shared Pastorate: Bruce Weaver,  
Wesley Brubaker, Larry Banks.  
Sunday Church School 9:30 a.m.,  
Worship 10:30 a.m.

### BURR OAK CHURCH OF GOD

Darrell G. Maddock, Pastor, Mrs.  
John Drang, Sunday School Superin-  
tendent.  
Sunday School 9:45 a.m., Morning  
Worship 10:45 a.m., Senior Youth  
Fellowship 6:30 p.m., Junior Youth  
Fellowship 6:30 p.m., Evening Worship  
7:30 p.m., Wednesday "Hour of  
Power" Service 7:30 p.m.

### ZION GOSPEL CHAPEL

Steven Bradley, Pastor, Marion  
Kline, Sunday School Superintendent,  
William Sheridan, Assistant Superin-  
tendent.  
Sunday School 9:30 a.m., Morning  
Worship 10:45 a.m., Evening Service  
7:30 p.m., Mid-Week Service on  
Thursday at 7:30 p.m.

### CULVER MILITARY ACADEMY MEMORIAL CHAPEL

Rev. Calvin R. Cough, Chaplain.  
Worship Service 11:00 a.m., Visitors  
are always welcome.

### GRACE UNITED CHURCH OF CHRIST

Rev. John Krueger, Pastor.  
Church School Classes 9:15 a.m.,  
Worship Service 10:30 a.m.

### EMMANUEL UNITED METHODIST CHURCH

Rev. Maurice Kessler, Pastor.  
Worship Service 9:30 a.m., Church  
School 10:35 a.m. Wednesday: Mid-  
week Service 7:00 p.m., Choir Rehear-  
sal 8:00 p.m.

### WESLEY UNITED METHODIST

On the corner of School and Lewis  
Streets. Rev. Earl W. Sharp, Minister,  
Mrs. Ted Strang, Director of Christian  
Education.  
Church School 9:30 a.m., "Worship  
Service 10:40 a.m.

### SAINT MARY'S OF THE LAKE CATHOLIC CHURCH

"The Church With The Gold Crosses"  
Rev. Joseph A. Lank, Pastor.  
Saturday Mass 5:30 p.m., Sunday  
Mass 11:00 a.m., Religious Instruction  
for Young Adults 9:30 to 10:30 a.m.  
Sunday, Confessions before Mass.

### TRINITY LUTHERAN CHURCH

Located at 330 Academy Road,  
Culver. Rev. Roger L. Sommer, Pastor.  
Sunday Worship 9:00 a.m., Sunday  
School and Bible Class 10:15 a.m.,  
Women's Guild on First Mondays 8:00  
p.m. and Alternate Thursdays  
7:30 p.m.

### GILEAD UNITED METHODIST

Rev. Ray Kuhn, Pastor, Grover  
Shaffer, Superintendent.  
Worship Service 10:00 a.m.,  
(11:00 a.m. on Second and Fourth  
Sundays).

### LEITERS FORD METHODIST

Leon Welling, Sunday School Super-  
intendent.  
Church School 10:00 a.m., Worship  
Service 11:00 a.m., M.Y.F. on Second  
and Fourth Sundays.

### LEITERS FORD CIRCUIT

Rev. Phillip Lutz, Pastor

### MONTEREY METHODIST

Worship Service 9:10 a.m., Church  
School 10:15 a.m.

### MOUNT SANTA GROVE PARISH

Rev. Mark Day is pastor of the  
three churches that make up the Mount  
Santa Grove Parish. They are:

### MOUNT HOPE UNITED METHODIST

Robert C. Kline, Superintendent.  
Church School 10:00 a.m., Worship  
Service 11:00 a.m. every Second and  
Fourth Sunday.

### SANTA ANNA UNITED METHODIST CHURCH

Phillip Peer, Superintendent, Church  
School 10:00 a.m., Worship Service  
11:00 a.m. every First and Third  
Sunday.

### POPLAR GROVE UNITED METHODIST

Ellis Clifton, Superintendent. Wor-  
ship Service, 10:00 a.m., Church School  
10:45 a.m.

### MONTEREY SAINT ANN'S CATHOLIC CHURCH

Sunday Mass 9:00 a.m., Weekday  
Masses 8:00 a.m. Monday, Tuesday  
and Thursday, 7:30 p.m. on Wednesday  
and Friday. Saturday Masses 8:30 a.m.  
and 7:30 p.m., Holy Days of Obligation  
8:00 a.m. and 7:30 p.m. Confessions  
After Wednesday and Friday evening  
Mass, and Saturday from 4:00 to 5:00  
p.m.

### FIRST CHURCH OF CHRIST, SCIENTIST

Located at 428 South Michigan  
Street, Plymouth.  
Worship Service 10:30 a.m.,  
Wednesday Evening Service 7:45 p.m.

### ST. THOMAS EPISCOPAL CHURCH

Located at the corner of Center and  
Adams Streets, Plymouth. Rev. James  
G. Greer, Pastor.  
Sunday Services, Holy Communion  
7:30 a.m., Family Eucharist 9:30 a.m.,  
Parish Nursery 9:30 a.m.

### PRETTY LAKE TRINITY UNITED METHODIST

Rev. J. C. White, Pastor.  
Morning Worship 9:30 a.m., Sunday  
School 10:20 a.m.

### RICHLAND CENTER UNITED METHODIST CHURCH

Rev. Curtis R. Sylvester, Pastor,  
Robert J. Nellans, Lay Leaders, Howard  
Conrad, Superintendent, Telephone  
Rochester 223-3751.  
Worship Service 9:30 a.m. on Second  
and Fourth Sundays, 10:30 a.m. on  
First and Third Sundays, Church School  
at Alternating Times.

### BURTON UNITED METHODIST CHURCH

Rev. Curtis R. Sylvester, Pastor,  
John Cessna, Lay Leader, Margaret  
Belcher, Superintendent, Telephone  
Rochester 223-3751.  
Worship Service 9:30 a.m. on First  
and Third Sundays, 10:30 a.m. on  
Second and Fourth Sundays, Church  
School at Alternating Times. Methodist  
Youth Fellowship 5:30 p.m. Sunday.

For corrections or additions,  
please contact:

The Culver CITIZEN  
Post Office Box 90  
Culver, Indiana 46511

## Helps Shrink Swelling Of Hemorrhoidal Tissues

caused by inflammation

Doctors have found a medica-  
tion that in many cases gives  
prompt, temporary relief from  
pain and burning itch in hemor-  
rhoidal tissues. Then it actually  
helps shrink swelling of these  
tissues caused by inflammation.

The answer is Preparation H®.  
No prescription is needed for  
Preparation H. Ointment or  
suppositories.



## LICENSE PLATES

### MAIL-ORDER LICENSES

Tired of standing in long lines to get your license plate?

Avoid the long lines by order your plate by mail.

The first of 3.3 million pre-print registration forms have gone out in the mail to Hoosiers which will enable them to purchase their 1974 license plates by mail, said Commissioner Ralph Van Natta.

The mail-in service has been used some in the past by the Bureau of Motor Vehicles, but this is the first year for a total up-to-date state-wide mailing of the pre-prints, he said.

By using the pre-print forms, the motorist can obtain his plates by mail without have to go to the license branch in most cases.

Van Natta said each person who purchased plates last year will receive in the mail a pre-printed registration form and a return mail envelope.

To purchase a plate by mail, Van Natta said a person should do the following:

1. Check the information on the registration form. If the name, address or social security number is incorrect, write the correction in the space provided.

2. Make sure the registration is for the car you own. This can be done by checking the description of the vehicle with your title. If it is not the same, then you should take both to license branch.

3. Sign the registration. Notarization is not required for purchase by mail.

4. Make out a check or money order payable to the Bureau of Motor Vehicles for the exact amount indicated by the arrow on the form. Include your telephone number on the check or money order.

5. Do not send cash.

6. Place all the copies of the registration and check or money in the return envelope provided. Be sure the address is visible and mail it to the branch address shown in the window of the envelope.

You should order your license plate by mail at least a month before you absolute deadline to have the plate on your vehicle, no later than the 5th of your registration month to be assured of receiving the plate in the mail in time.

Van Natta said personal checks can be used to order plates by mail, but cannot be used at the branches when buying the plate in person.

The amount to be paid for the plate is shown on the registration form and includes the excise due, plate cost and \$1 charge which pays for postage and other handling and labor costs.

The branches are required to mail the plates to the public by first class mail, instead of third class mail as some have done in the past. It is expected this will speed up delivery of the plates, Van Natta said.

Persons who have traded cars during the year may receive a registration form for the old auto as well as one for the new vehicle. The old one should be discarded. If you traded cars before October 1, you should get a registration form for

the new vehicle.

Van Natta said if you have moved from one county to another during the year, you may not get a pre-printed form, and should you receive one you cannot use it unless it shows a branch address in the county in which you now live.

You also cannot use the pre-printed form if you are entitled to a Disabled American Veteran tax credit.

In both instances, you should go to the branch to obtain your plate, Van Natta said.

For most cars the excise tax should decline from the amount paid last year due to a built-in depreciation schedule fixed by the law.

This year that schedule has been revised by the Legislature, creating four new classifications for vehicles costing in excess of \$5,500 new.

These vehicles now have been divided into five classes, with the last being vehicles costing more than \$12,500. The "Factory Advertised Delivery Price" or the "Port of Entry Price" is used by the Bureau to determine the class of the auto, regardless of the actual price paid for the vehicle.

The excise tax is levied as a replacement of the personal property tax to be collected by the Bureau of Motor Vehicles.

In ordering the plate by mail the person should check, before mailing in his application, to see that his name, social security number and address is correct on the form and is on the return envelope. He should also check to make sure that he signed the form and enclosed a check or money order for the exact amount shown on the form. He then should check to see that the address is visible through the window of the envelope and that he has placed the correct amount of postage on it.

Van Natta said the person's plate and his copy registration form will be sent to him in the mail.

### 4-H NEWS

By Kaye Mahler, Scribe

The Senior Livewires 4-H Club held a meeting December 17th at the home of Mark Kepler.

We discussed our activity calendars we have been selling. We cut the price from 50 cents to 25 cents. A committee was set up to sell calendars at Culver varsity basketball games.

Our dues were set at 75 cents and they are to be paid by our March meeting. Failure to pay dues by this date will result in exclusion from membership in the club.

The idea of having a photographer for the club was brought up. Neala Hyndman and Jim Hopkins volunteered their cameras and time to take pictures at the fair and other special activities.

We decided to have a pizza party for Christmas. The Junior Leaders from the Monterey 4-H Club are invited to the party.

The meeting was then adjourned.

### HIGH SCHOOL MENU

**Monday, January 21**—Hot dog on bun, French fries, buttered corn, apple crisp, milk.

**Tuesday, January 22nd**—Hamburger and gravy, mashed potatoes, green beans, Jello with fruit, bread, butter, milk.

**Wednesday, January 23rd**—Chicken and dumplings, peas, toss salad, tapioca pudding, bread, butter, milk.

**Thursday, January 24th**—Chili crackers, peanut butter with celery, toasted cheese sandwich, pumpkin squares with whipped topping, milk.

**Friday, January 25th**—Scalloped potatoes with ham, mixed vegetables, pineapple with cottage cheese, brownie, bread, butter, milk.

## TIPS FOR PAINTERS



"Touch up" that paint gouge the other driver took off your car! And how about painting those scraped surfaces on your household appliances! With modern aerosol spray paints the finish is beautiful, the time minimal.

Three simple rules hold the secret to a successful touch-up job. One, for best results, the temperature of the paint should be about 70°F. If the can is too

cold, the low pressure resulting inside will keep the paint from atomizing completely. Overcome this by letting the chilled can soak in hot tap water (no more than 120°F) for five minutes before using.

Two, perfect color match depends on thoroughly mixing the contents of the can. For best mixing results shake the can back and forth until the agitator ball inside rattles. Then hold the can at the top and swirl the ball around the bottom "vee" of the can for at least half a minute to insure all the pigment is mixed.

The most common mistake in spray painting is "leaning" on the valve. For touching up a small spot, open the valve for the shortest possible time. For larger areas, release your finger at the end of each stroke.

## The Three Sisters Building NOW FOR RENT

Banquets — Parties — Weddings — Meetings  
ALL FACILITIES AVAILABLE  
SMALL OR LARGE GROUPS  
Capable Of Serving Up To 250

For More Information Call 842-2793  
CATERING UPON REQUEST



## GRETTER'S

"ACROSS from THE BANK"

PHONE  
842-  
2262

### FOOD MART

Custom Cut QUALITY MEATS  
106 N MAIN ST. CULVER

We Proudly Feature



### TOP MEAT BUYS

LEAN FRESH

GROUND BEEF LB. \$1<sup>09</sup>

FRESH HOMEMADE BULK

PORK SAUSAGE LB. 89c

ELCONA PLATTER

SLICED BACON LB. \$1<sup>19</sup>

ECKRICH - ALL MEAT

SLICED BOLOGNA LB. \$1<sup>29</sup>

LEAN SHOULDER

PORK ROAST LB. 95c

SWIFTS PREMIUM PROTEN

CHUCK STEAKS LB. \$1.09

### SAVE ON NAME BRANDS



NESTLES

QUIK

2 LB. BOX

89c



DELMONTE

CATSUP

14 OZ. BOTTLE

2 FOR 49c



HUNTS

YELLOW CLING

PEACHES

Sliced Or Halves

2 1/2 SIZE CAN

49c

### MORE BIG BUYS



SOLID CRISP

HEAD

LETTUCE

29c

DIXIE BELL - SALTINE

CRACKERS 1 LB. BOX 39c

ROYAL SCOTT

OLEO LB. 39c

WEIGHT WATCHERS

APPLE SNACKS 2 FOR 35c

RICHELIEU PIECES & STEMS

MUSHROOMS 3 4 OZ. CANS 79c



### PRETTY FEET

a unique beauty cream

... that changes those dry & rough areas of skin into baby softness. Try it — you'll find PRETTY FEET is like no other. Go On ... pamper yourself.



**ANNUAL REPORT  
Of The  
TOWN OF CULVER, INDIANA  
For The Year 1973**

<b>GENERAL FUND: Balance January 1, 1973</b>	<b>\$19,324.06</b>
Receipts:	
General Property taxes	\$44,699.55
Vehicle excise tax	5,309.08
Cigarette tax	2,231.19
Liquor tax	3,588.99
Dog tax	112.00
Building permits	345.00
Fire Protection contracts	3,500.00
Miscellaneous	489.25
<b>TOTAL RECEIPTS</b>	<b>60,275.06</b>
Disbursements:	
Salary of Trustees	\$1,100.00
Salary of Clerk-Treasurer	1,000.00
Salary of Marshal & deputies	17,790.09
Compensation Town Attorney	400.00
Compensation Volunteer Firemen	1,750.00
Fire Phone Service	700.00
Services Contractual	17,087.41
Supplies	3,068.53
Materials	77.85
Insurance	4,282.62
Hydrant rental	6,000.00
Current Charges	2,554.20
OASI-Town's Share	1,107.62
Properties-equipment	1,687.36
Miscellaneous	22.00
<b>TOTAL DISBURSEMENTS</b>	<b>58,627.68</b>
<b>BALANCE Dec. 31, 1973</b>	<b>\$20,971.44</b>
<b>MOTOR VEHICLE HIGHWAY &amp; STREET FUNDS</b>	
<b>Balance, January 1, 1973</b>	<b>\$9,209.08</b>
Receipts:	
General Property taxes	13,473.66
Vehicle excise tax	1,596.19
Gasoline tax & MVH fees	17,012.23
<b>TOTAL RECEIPTS</b>	<b>\$32,082.08</b>
Disbursements:	
Salary Street Commissioner	1,000.00
Salary of Employees	10,152.76
Wages of Laborers	405.26
Services Contractual	10,079.18
Supplies	1,183.85
Materials	819.11
Insurance	468.77
Rents	340.00
OASI, Town's Share	668.76
Properties-Equipment	5,535.66
<b>TOTAL DISBURSEMENTS</b>	<b>\$30,653.35</b>
<b>BALANCE, Dec. 31, 1973</b>	<b>\$10,637.81</b>
<b>PARK AND RECREATION FUND: Balance, January 1, 1973</b>	<b>\$2,795.95</b>
Receipts:	
General Property Taxes	\$7,029.73
Vehicle Excise Tax	832.80
Beach receipts	6,437.56
Temporary loans	500.00
Rents	150.00
Union Township	400.00
Miscellaneous	300.00
<b>TOTAL RECEIPTS</b>	<b>\$15,650.09</b>
Disbursements:	
Park Labor (12 persons)	\$3,989.94
Life Guards (4 persons)	2,927.70
Park Superintendent	1,918.00
Services Contractual	2,323.20
Supplies	1,121.42
Insurance	64.35
OASI-Town's Share & Corp. Income Tax	654.87
Properties-Equipment	1,268.74
Repayment of Temporary Loan	500.00
<b>TOTAL DISBURSEMENTS</b>	<b>\$14,768.22</b>
<b>BALANCE, Dec. 31, 1973</b>	<b>\$3,677.81</b>
<b>CUMULATIVE CAPITAL IMPROVEMENT FUND</b>	
<b>Balance, January 1, 1973</b>	<b>\$13,635.71</b>
Receipts: Cigarette Tax	\$8,181.02
Receipts: Cigarette Tax	\$8,181.02
Disbursements:	
Construction and Re-construction of streets	\$21,642.00
<b>BALANCE, Dec. 31, 1973</b>	<b>\$174.73</b>
<b>LOCAL ROAD &amp; STREET FUND: Balance, January 1, 1973</b>	<b>.00</b>
Receipts (State gasoline tax)	\$14,032.50
Disbursements-Street Construction	\$14,032.50
<b>BALANCE, Dec. 31, 1973</b>	<b>.00</b>
<b>FEDERAL REVENUE SHARING TRUST FUND:</b>	
<b>Balance, January 1, 1973</b>	<b>.00</b>
Receipts:	
Entitlement checks	\$17,646.00
C/D cashed in	4,858.00
Interest on C/D cashed in	122.82
<b>TOTAL RECEIPTS</b>	<b>\$22,626.82</b>
Disbursements:	
C/D's purchased	\$17,646.00
Advertisements	177.87
Police Car	3,990.00
Little League Baseball Club	600.00
<b>TOTAL DISBURSEMENTS</b>	<b>\$22,413.87</b>
<b>BALANCE, Dec. 31, 1973</b>	<b>\$212.95</b>
<b>FEDERAL REVENUE SHARING TRUST INVESTMENT FUND:</b>	
<b>Balance, January 1, 1973</b>	<b>.00</b>
Receipts:	
C/D's purchased	\$17,646.00
Interest earned	472.50
Disbursements:	
Interest on C/D cashed in	122.82
C/D cashed in	4,858.00
<b>BALANCE, Dec. 31, 1973</b>	<b>\$13,137.68</b>
<b>SPECIAL TAX FUND: Balance, January 1, 1973</b>	<b>\$371.30</b>
Receipts:	
Temporary loan	\$700.00
Refunds	324.13
Payroll Taxes	17,591.79
<b>TOTAL RECEIPTS</b>	<b>\$18,615.92</b>
Disbursements:	
Repayment of temporary loan	\$700.00
Payment of withheld payroll taxes	17,254.61
<b>TOTAL DISBURSEMENTS</b>	<b>\$17,954.61</b>
<b>BALANCE, Dec. 31, 1973</b>	<b>\$1,032.61</b>

<b>WATER OPERATING FUND: Balance, January 1, 1973</b>	<b>\$20,444.51</b>
Receipts:	
Consumer accounts	\$49,432.86
sales tax	1,353.45
penalties	379.18
Hydrant rental	6,000.00
Refunds	626.66
Miscellaneous	140.01
<b>TOTAL RECEIPTS</b>	<b>\$57,932.16</b>
Disbursements:	
Maintenance Water line salaries	\$4,187.44
Operation of water plant	4,340.58
Administrative Salaries:	
Clerk-Treasurer	1,600.00
Assistant	2,057.25
Insurance	166.93
Other Admin. expenses	8,446.48
Taxes	2,187.95
Transfers from water op. fund	39,324.03
Town's Share-OASI	370.59
Refund	11.44
<b>TOTAL DISBURSEMENTS</b>	<b>\$62,692.69</b>
<b>BALANCE, Dec. 31, 1973</b>	<b>\$15,683.98</b>
<b>WATER DEPRECIATION FUND: Balance, January 1, 1973</b>	<b>\$23,391.67</b>
Receipts:	
Transfers from water op. fund	\$6,583.99
Repayment of Temporary Loan	500.00
<b>TOTAL RECEIPTS</b>	<b>\$7,083.99</b>
Disbursements:	
Temporary Loan	\$500.00
<b>TOTAL DISBURSEMENTS</b>	<b>\$500.00</b>
<b>BALANCE, Dec. 31, 1973</b>	<b>\$29,975.66</b>
<b>WATER BOND AND INTEREST REDEMPTION FUND:</b>	
<b>Balance, January 1, 1973</b>	<b>\$31,079.50</b>
Receipts: transfer from operating fund	\$32,740.04
Disbursements: Bonds paid	9,000.00
Interest paid	19,681.25
Interest paid	19,681.25
<b>BALANCE, Dec. 31, 1973</b>	<b>\$35,138.29</b>
<b>METER DEPOSIT FUND: Balance, January 1, 1973</b>	<b>\$5,908.84</b>
Receipts	\$665.00
Disbursements (refunded or applied)	\$425.00
<b>BALANCE, Dec. 31, 1973</b>	<b>\$6,148.84</b>
<b>SEWER OPERATING FUND: Balance, January 1, 1973</b>	<b>\$36,774.47</b>
Receipts:	
Consumer Accounts	\$86,273.53
Penalties	826.53
Repayment of temporary loan	700.00
Miscellaneous	81.33
<b>TOTAL RECEIPTS</b>	<b>\$87,881.39</b>
Disbursements:	
Collection System:	
Operating Labor	\$431.16
Repairs	143.20
Other expenses	109.35
(Total)	\$683.71
Plant:	
Plant Supt./Chemist's Salary	\$7,500.00
Plant Operator's Salary	7,641.33
Part-time labor	982.50
Electric & gas	13,012.93
Repairs	2,254.40
Materials & Supplies	2,271.17
Other	5,067.52
(Total)	\$38,729.85
General:	
Collecting bills	536.67
Salary of Clerk-Treasurer	2,900.00
Salary of Assistant	2,057.25
Office expenses	4,403.89
Insurance	264.64
Other	1,195.16
Town's Share-OASI	1,221.70
(Total)	\$12,579.31
Transfers from operating fund	30,101.28
<b>TOTAL DISBURSEMENTS</b>	<b>\$82,094.15</b>
<b>BALANCE, Dec. 31, 1973</b>	<b>\$42,561.71</b>
<b>SEWER SINKING FUND: Balance January 1, 1973</b>	<b>\$2,966.16</b>
Receipts: transfer from operating fund	\$30,101.28
Disbursements: transfers to Bond fund	\$30,061.25
<b>BALANCE, Dec. 31, 1973</b>	<b>\$3,006.19</b>
<b>SEWER BOND AND INTEREST FUND:</b>	
<b>Balance, January 1, 1974</b>	<b>\$21,037.50</b>
Receipts: (Transfer from sinking)	\$30,061.25
Disbursements: Bonds paid	20,000.00
Interest paid	17,345.00
<b>BALANCE, Dec. 31, 1973</b>	<b>\$13,753.75</b>
<b>SEWER CONSTRUCTION FUND: Balance, January 1, 1974</b>	<b>\$5,534.37</b>
Receipts: (State Grant)	\$35,600.00
Disbursements: (new construction)	\$38,108.00
<b>BALANCE, Dec. 31, 1973</b>	<b>\$3,026.37</b>
<b>INDEBTEDNESS:</b>	
Revenue Bonds	
5 3/4 % 1968-1993 Water Plant Construction	\$346,000.00
3 1/4 % 1952-1992 Sewer Plant Construction	249,000.00
5 1/2 % 1971-1987 Sewer Plant Construction	110,000.00
<b>TOTAL, December 31, 1973</b>	<b>\$705,000.00</b>

## Service News

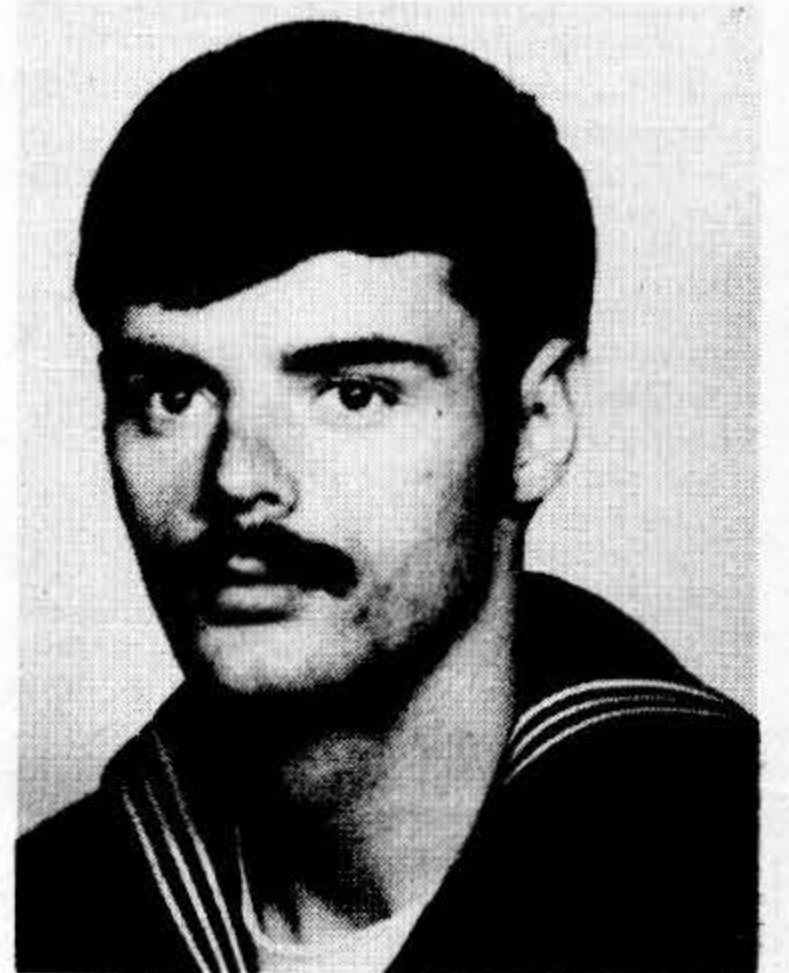
### GUNDER CHOSEN PLANE CAPTAIN OF MONTH

Petty Officer Third Class Craig R. Gunder, son of Mr. and Mrs. R.L. Gunder of 728 Neuva Gorda Street, Culver, was chosen as Naval Attack Squadron Twelve's "Plane Captain of the Month" for December.

PO 3.C. Gunder, who is responsible for insuring the aircraft assigned him are safe for flight, was chosen for his outstanding performance of duty.

PO 3.C. Gunder was graduated from Culver Community High School in June, 1970, and entered the Navy in June 1971. He reported to Attack Squadron Twelve in January 1972.

Squadron Twelve, which is stationed at Jacksonville, Florida, flies the A-7 "Corsair." Presently the squadron is deployed on board the USS Independence in the Mediterranean.



CRAIG R. GUNDER

### SMITH REPORTS FOR DUTY

Marine Private Earl D. Smith, son of Mr. and Mrs. James L. Hammond, and husband of the former Miss Debra L. Shidler, all of Culver, reported for duty at the U.S. Marine Corps Base in Okinawa, Japan on December 28th.

### FORGOTTEN BONDS?

Do you have some savings bonds held in trust for you by the Treasury Department? If you are a veteran of World War II, the Korean Conflict, or the Viet Nam War, there is a chance that you may have. The chairman of the Veterans Affairs Committee, Senator Vance Hartke, has ascertained from Treasury Secretary George Shultz that 206,000 unclaimed U.S. Savings Bonds with a face value of over fifty million dollars are held by the Treasury Department. Since the Treasury Department has not been aggressive in locating the owners of these bonds or their descendants, Senator Hartke feels that his Committee should conduct a search for the owners to correct this oversight.

Many veterans have bought bonds on an allotment basis: the bonds were held for them during the war time for safekeeping. Ignorance of procedure or death of the GI owners have brought about the situation delineated above.

If you are a veteran who believes that he is entitled to such bonds or a veteran's descendant who believes that he had bought bonds, write to Col. E. Kemp Moore, Route 1, Culver, County Correspondent, Veterans Advisory Council, for assistance in this matter.

## FREEZONE IS FOR CORNS THAT HURT.

Why fool around with painful corns, when Freezone can help you remove them. Try it. You'll see. In just days, the corn will be gone... the hurt will be gone. Painlessly. No dangerous cutting. No ugly pads or plasters. Drop on Freezone—take off corns.



### Arthritis Sufferers:

## WAKE UP WITHOUT ALL THAT STIFFNESS!

New formula for arthritis minor pain is so strong you can take it less often and still wake up in the morning without all the pain's stiffness. Yet so gentle you can take this tablet on an empty stomach. It's called *Arthritis Pain Formula*. Get hours of relief. Ask for *Arthritis Pain Formula*, by the makers of *Anacin* analgesic tablets.



TOWNSHIP TRUSTEE'S (ABSTRACT) REPORT OF  
RECEIPTS AND DISBURSEMENTS FOR THE CALENDAR YEAR 1973

Union Township, Marshall County

FUNDS	BALANCE JAN. 1	RECEIPTS	DISBURSE- MENTS	BALANCE DEC. 31
Township	\$2,663.54	\$5,358.97	\$4,758.16	\$3,264.35
Int. Cert. Deposit		67.50		67.50
Dog	0.00	536.00	111.00	425.00
Fire	1,070.94	3,689.92	3,500.00	1,260.86
Recreation	1,083.73	922.48	867.00	1,139.21
Federal Revenue Sharing:	1,489.00	*4,450.81	201.42	*5,738.39
*Cert. Dep. plus Int.				
<b>TOTALS</b>	<b>\$6,307.21</b>	<b>\$15,025.68</b>	<b>\$9,437.58</b>	<b>\$11,895.31</b>

DETAIL OF RECEIPTS SOURCE	AMOUNT	DETAIL OF RECEIPTS (CON'T) SOURCE	AMOUNT
TOWNSHIP FUND		FIRE FUND	
Taxes—June	\$2,713.12	June Taxes	\$1,991.47
Taxes—December	2,287.22	Dec. Taxes	1,698.45
Justice of Peace Docket Fees	152.00	<b>Total Fire Fund</b>	<b>\$3,689.92</b>
Sales Returned	.21		
Fed. Rev. Reimburse	201.42	RECREATION FUND	
Cemetery Donation	5.00	June Taxes	\$497.86
<b>Total Township Fund</b>	<b>\$5,358.97</b>	Dec. Taxes	424.62
		<b>Total Recreation Fund</b>	<b>\$922.48</b>
DOG FUND		FEDERAL REVENUE SHARING FUND	
Dog Tax From Assessor	\$400.00	U. S. Treasury	\$4,269.00
Dog Tax From Co. Treas.	25.00	Int. on Cert. of Deposit	181.81
Surplus from County	111.00	<b>Total Federal Revenue</b>	
<b>Total Dog Fund</b>	<b>\$536.00</b>	<b>Sharing Fund</b>	<b>\$4,450.81</b>

## DISBURSEMENTS TOWNSHIP FUND

Classification of Expense and To Whom Paid	gross Amount	Everett Gibbons-Advisory Board Salary	100.00
State Exchange Ins. Agency		William Snyder-Advisory Board Salary	100.00
J.P. Bond	\$21.00	Ind. State Agency O.A.S.-Administration charges	14.07
Culver Postmaster-J.P. Stamps	28.00	Pilot Co.-Fed. Rev. Adv.**	142.35
Culver Postmaster-Trustee Stamps	36.00	Culver Citizen-Fed. Rev. Adv.**	59.07
State Exchange Ins. Agency Trustee's Bond	40.00	*Sales Tax .21 reimbursed	
Plymouth Office Supply* Trustee-Dep. Ass. Stamps & Pad	13.71	**Fed. Rev. reimbursed	
Audrey Meyers-Township Forms, Numbered Receipts; Poor Relief Forms	31.95	<b>Total</b>	<b>\$4,758.17</b>
Ronald Gleason-Salary, rent, tel. and travel expense	1,745.00		
Burr Oak Hdwe.-Folding Ruler	2.85		
Pilot Co.-Advertising	124.07		
Culver Citizen-Advertising	114.47		
Alice Gleason-Clerk	300.00		
J.A. Hafert-J.P. Docket fee for trial	4.00		
Snyder Motor Sales-Repair Township Mower	21.90		
Culver Masonic Lodge-Care Culver Cemetery	175.00		
Brent Lindvall-Mowing Wash., Rutland, Shaw Cem.	265.00		
Kevin Overmyer-Mowing Wash., Rutland, Shaw Cem.	265.00		
Rick Scott-Mowing Burr Oak Cemetery	325.00		
Maxinkuckee I.O.O.F. Lodge-Mowing Poplar Grove Cem.	225.00		
J.P. Phone calls	4.52		
Joe A. Hofert-J.P. Salary	500.00		
Dewey Overmyer-Advisory Board Salary	100.00		

DISBURSEMENTS FED. REVENUE SHARING FUND		Gross Amount	
Classification of Expense and To Whom Paid			
Pilot Co.-Advertising		\$142.35	
Culver Citizen-Advertising		59.07	
<b>Total</b>		<b>\$201.42</b>	
Dog Fund			
Ray Huffer-Bal. 1972 Payment-Lambs killed		91.00	
Robert Radowski-Lambs killed		20.00	
<b>Total</b>		<b>\$111.00</b>	
RECREATION FUND			
Dorothy Miller-Girls 4-H Leader	250.00		
Town of Culver-Park & Recreation Board	400.00		
Culver Park League-Boy's Little League	217.00		
<b>Total</b>		<b>\$867.00</b>	
FIRE FIGHTING FUND			
Town of Culver-Township share of Expenses		\$3,500.00	
<b>Total</b>		<b>\$3,500.00</b>	

I hereby certify that the foregoing is a true and correct statement of the receipts and disbursements of the above named township; that a complete and detailed annual report together with all accompanying vouchers showing the names of persons having been paid money by the township has been filed as required by law in the office of the County Auditor, and that a copy of such annual report is in custody of the chairman of the township advisory board. Said report is subject to inspection by any taxpayer of the township.

Ronald J. Gleason  
Trustee

Published January 17, 1974

GIRL SCOUTS KICKOFF  
ANNUAL COOKIE SALE

The annual Cookie Kickoff Meeting and Honors Luncheon for the Girl Scouts of Singing Sands Council was held Thursday, January 10, at the Niles, Michigan, Holiday Inn.

Mrs. Dee Pankratz, account manager for the Burry Biscuit Company, which sponsored the luncheon, spoke to volunteers on the procedures of the cookie campaign.

Order-taking dates for the sale are restricted to February 8-18, with delivery and customer payment scheduled for March 29-April 8.

Mrs. Fred McAllister, 519 Columbia, St. Joseph, Michigan, is this year's Council Cookie Chairman. The Association Cookie Chairman for this area is Mrs. Gene Carpenter, Post Office Box 160, LaPaz, Indiana 46536, telephone 784-5451. Culver's Service unit Cookie Chairman is Mrs. Russell Ulery, State Road 17, telephone 842-2674.

CULVER RESIDENT RECEIVES  
ANCILLA RECOGNITION

Cynthia McKee has been named as one of the students of Ancilla College who is entitled to Academic Recognition. Such a list is issued each semester, and students entitled to be placed on this list have maintained a 3.0 grade point average.

The announcement was made last week by Sister Joel Lampen, President-Dean of Ancilla College in Donaldson, Indiana.

MOTHERS OF TWINS TO ENJOY  
WINTER FROLIC

The Indiana Federation Mothers of Twins Clubs will be enjoying on January 19th beginning at 6:30 p.m. an evening of fun and frolic. This big event will be held at the Heritage House on State Road 3, north in Fort Wayne, with Mrs. Wayne Gerber, President of the Fort Wayne club, in charge. The evening will cost \$12.00 a couple and includes a complete smorgasbord, round and square dancing, games and door prizes. This evening will include the papas as well as the mamas.

Any mother or guardian of twins may become a member of a local or state club. For information, contact the state President, Mrs. Al Bastine, 608 Alexandria Pike, Anderson, Indiana 46012. There will be couples there from all over the state of Indiana.

Stomach Upset  
by Gas and Acid?

Di-Gel® with Simethicone quickly relieves both acid and gas.

This unique discovery breaks up and dissolves trapped gas bubbles. Your relief is more complete because Di-Gel takes the acid and the gas out of acid indigestion. When you eat too well, demand Di-Gel. Tablets, liquid. Product of Plough, Inc.



LOOKING OVER COOKIE SALES MATERIALS for the area Girl Scouts are, left to right, Mrs. Delbert Jacobs of Walkerton, Mrs. Gene Carpenter of LaPaz, and Mrs. Dee Pankratz, account manager of the Burry Biscuit Company.

PILOT PROGRAM  
OPENS ACRES FOR HUNTERS

When Indiana hunters shoulder their guns and head for the woods and fields this fall, they'll find some extra farmland available on which they can hunt. The land is on farms whose owners agreed to permit open hunting this year under the U.S. Department of Agriculture's public access program.

The public access program is the second year of a pilot effort aimed at encouraging farmers who took part in acreage set-aside programs for wheat and feed grains to open their lands free of charge to the public for hunting or fishing.

the program is being administered by USDA's Agricultural Stabilization and Conservation Service through its State and County ASC Committees. Counties and farms included in the program were selected by these committees in consultation with wildlife agencies in each State.

In 1973, the program is being tested in 50 counties in 10 States. In Indiana, Hendricks, Newton, Posey, Warren and White Counties are taking part in the program. These five counties have a total on 91 farms with 25,176 acres enrolled in the program.

Participating farms have signs posted along the road identifying it as a public access farm. There will also be a sign at the farmhead-quarters, along with a box containing user survey cards which hunters are asked to complete and mail to the county ASC's office. It is important that these cards be completed and returned because they will be used to evaluate the success of the program.

Sportsmen who are interested in

hunting or fishing on these farms may obtain further information, as well as lists of landowners and maps showing the general location of each farm, at the Marshall county ASC's office. Farms are available for public use without regard to race, creed or color. Maps are also available at the State ASCS office, 5610 Crawfordsville Road, Indianapolis, Indiana 46224.

Gas and  
heartburn?

Di-Gel® contains a unique anti-gas ingredient, Simethicone. This unique discovery breaks up and dissolves trapped gas bubbles. Your relief is more complete because Di-Gel takes the acid and the gas out of acid indigestion. Get Di-Gel tablets or liquid today. Product of Plough, Inc.

**YES!**  
IN OUR REPAIR SHOP  
WE DO  
REBUILD YOUR  
CARBUREATORS  
AND DISTRIBUTORS  
Most American Cars  
AND TURN  
BRAKE DRUMS  
Some Foreign Cars, Too

CULVER AUTO SUPPLY  
Call Us First — 842-3658

## SNOWED IN?

USE THESE "INSIDE DAYS" TO PUT YOUR  
HOUSE IN ORDER...

WE CAN HELP!

EXPERT CLEANING AND FINISHING FOR  
DRAPERIES, SLIPCOVERS, BLANKETS AND  
BEDSPREADS...

## THE IDEAL CLEANERS

In Culver



Time Is Running Out!

January Sale Ends Next Week at—

BOETSMA  
**HOME  
FURNISHINGS** Inc.





**GOLDEN BROILED PORK CHOPS PAIRED with fruit kabobs, laced with bacon, radiate warmth at winter table.**

Watch a bleak winter day turn to bright sunshine when "Ol Sol" comes to the dinner table. This Sunburst Pork Chop Platter provides menu sunshine to warm up the dining scene. The chops and fruit kabobs share the broiler as well as the platter, making this a quick meal as well as a delicious one.

This appetizing platter is a bright choice from the viewpoint of good nutrition too, says Reba Staggs, National Live Stock and Meat Board. **Sunburst Pork Chop Platter**

Place 6 pork chops, cut 1 to 1½ inches thick, on rack in broiler pan so top of meat is 5 to 6 inches from heat. Broil

12 to 17 minutes, season with salt and pepper and turn. Before or while chops are broiling, prepare kabobs using 6 slices bacon, 12 prunes (plumped and pitted) and 2 oranges pared and cut in 6 wedges each. Thread 1 slice bacon back and forth on each of 6 5-inch skewers, threading 2 prunes and 2 orange wedges between the folds of bacon. Place kabobs on broiling pan after chops are turned and continue broiling until chops and bacon are done. Allow 6 minutes for kabobs on one side and 4 to 6 minutes on second side and allow 12 to 15 minutes for broiling second side of chops.

## LETTERS

January 1974  
Newsletter #6

Dear School Patrons:

With the beginning of the new calendar year, all of us should make resolutions which will set proper goals and objectives for the year. Those of us associated with Culver Community High School have resolved to make the high school a better school and we hope to be as effective as possible in motivating our students to get the best possible education. January also marks the half way mark of our school year and with it comes the closing of one semester and the beginning of the second. I suppose if I had some kind of magic power, it would be to be able to instill within our students the desire to make these valuable school years count for something worth while. So many opportunities are here if they will but avail themselves of it. I see so many students wasting time and refusing to work up to their potential that it often grieves me. Often parents tell me that their youngsters never bring books home for study. They wonder if home work is "out of style." Nothing could be further from the truth. Although if students will use their study hall time wisely, it will not be necessary to take as many books home as otherwise. The plain fact is that all students do have a certain amount of "out of school hour expectations" when it comes to study so parents should not accept the excuse that no home work is required. Unless students are on the honor rolls regularly, parents should examine carefully the "after hours routine" of their youngsters. I would recommend a study table where it's quiet and where interruptions are kept at a minimum. Parents have a right to expect respectable grades from their students and when grades go below the respectable level, conferences should be held with school officials to determine cause. Usually my experience has shown that one can trace the cause to the fact that the student is not giving the proper time and/or priority to the school work. What a pity when parents allow their youngsters to let work take top priority over school responsibilities. It is not unusual for a high school student to come to the office and ask to run an errand or do a family duty on school time thus missing valuable class work. When asked why he does not want to do it after school, the response is usually, "Well, I work then, you wouldn't want me to miss my work would you?" Well, to me unless students are working as the "breadwinner" for the family and these cases are the exception and

## CAR POOLS

### WHY WAIT?--CARPOOL NOW

The National Automobile Association (NAA) is calling on the public to begin immediately to form carpools wherever it is possible. As severe as fuel shortages will be this winter, they are estimated to be three times greater next winter.

"The steps requested by the President will offset the growing shortages only in a fractional way," stated Talbert B. Bryant, Jr., NAA president, "but we must begin somewhere in the long pull toward self-sufficiency. It is shocking to learn how many millions of gallons of gasoline can be saved simply by lowering speed limits to 50 miles per hour and then to find out that these savings amount to so little compared with the total shortage," Bryant noted.

Carpooling has been put forward as a way of removing huge numbers of cars from the streets. It was not included in Nixon's proposals, perhaps for the reason that state and local governments are in a better position to encourage carpools than the federal government.

Among suggestions for promoting carpools are:

1. Reserved lanes on freeways for buses and cars with two or more people, or the use of metered traffic control devices that would give buses and carpools priority use of expressways.

2. Special taxes or heavier fees to be charged for parking one

not the rule. I answer that "school should take top priority because school is your main responsibility until graduation." Once high school really becomes important and taking first place, parents will see grades beginning to rise and students becoming more involved in the learning process. Many parents should carefully examine the priorities in their youngsters' lives. Now with the beginning of the new year, I would urge parents to start to persuade if possible and demand if necessary that good grades and responsible school citizenship take first place in the time and energies of their students. Much of education is preparation for a later time. Too many of our young people today want instant recognition, instant large salaries, instant success, instant wisdom. Unfortunately for them, life is not that way. Norman Cousins once said, "Education fails unless the Three R's at one end of the school spectrum lead ultimately to the four P's at the other - Preparation for Earning, Preparation for Living, Preparation for Understanding, Preparation for Participation in the problems involved in the making of a better world." Tomorrow can be a better, brighter world for our young people but only if they will spend some time PREPARING today.

Sincerely,  
Donald R. French

## DOG TAX

The 1974 dog tax for Culver is now due and is required by law for every dog six months of age or older. The price will remain the same:

\$1.00 for each male or spayed female; \$3.00 for each unspayed female; and \$5.00 for each additional dog.

The Culver Police Department wishes to remind everyone that any dogs running loose may be picked up or destroyed immediately. If impounded and no owner appears within three days, the dog will be destroyed. A charge of \$3.00 is assessed for the release of an impounded dog.

Dog tags may be purchased at the Clerk's Office from 8:00 a.m. to 4:00 p.m. Mondays, Tuesdays, Wednesdays, and Fridays; and from 8:00 a.m. to 12:00 noon on Thursdays and Saturdays.

## Agonizing Pain From Ingrown Toenail? Get Outgro For Fast Relief

Outgro gives you fast temporary relief from ingrown toenail pain. Outgro toughens irritated skin, eases inflammation, reduces swelling without effecting the shape, growth, or position of the nail. Stop ingrown nail pain fast with Outgro.

### POLICY REGARDING LETTERS TO THE EDITOR

All letters submitted for publication must bear the name and address of the writer, and authorship will be verified before publication.

The CITIZEN will, however, honor requests to withhold the name of the author.

Address letters to the Editor to:

Editor  
THE CULVER CITIZEN  
Post Office Box 90  
Culver, Indiana 46511

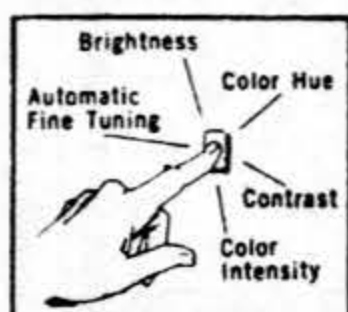
## VALUE TIME '74

### Special Prices On Selected Models



**MOTOROLA**  
**Quasar II**  
WORKS IN A DRAWER  
23" CONSOLE COLOR TV  
DIAGONAL

Model WJ8004KW  
Insta-Matic Color Tuning, Plug-in circuit modules, solid state chassis (except 4 tubes), Instant Picture & Sound.



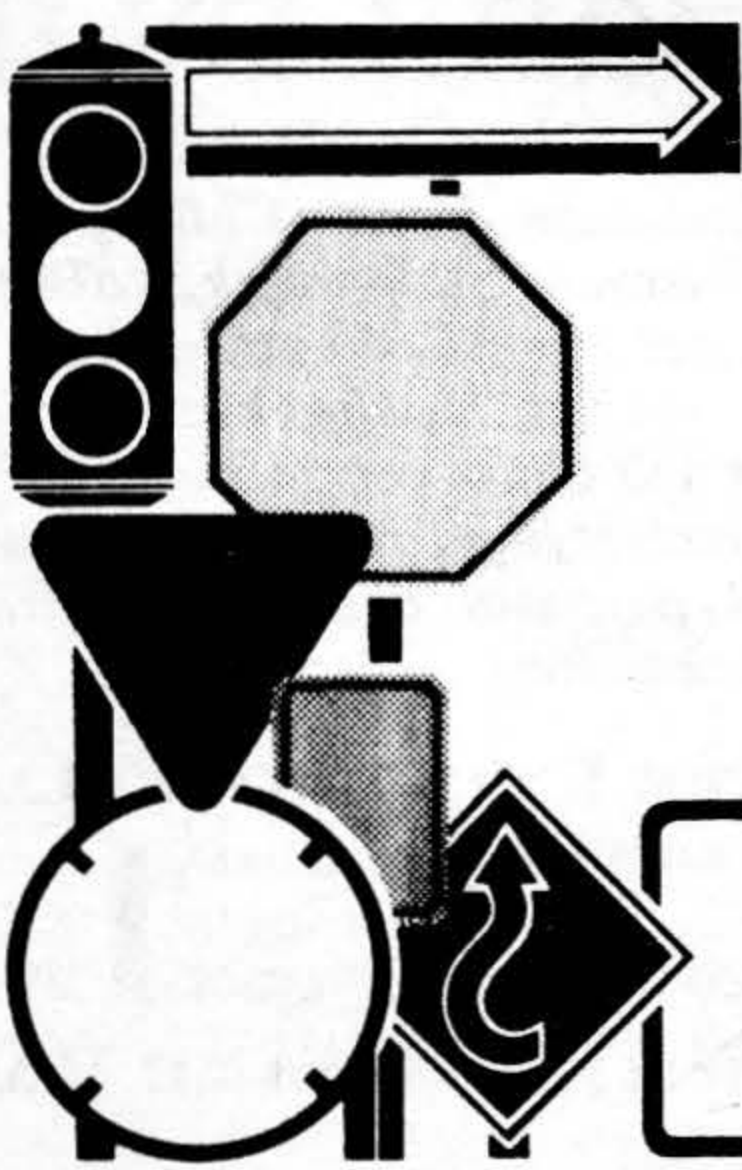
**INSTA-MATIC®  
COLOR TUNING**  
Just push one button and you automatically balance color intensity, hue, contrast, brightness and can even activate automatic fine tuning if already not in use. It's that easy!



**PLUG-IN  
CIRCUIT MODULES**  
Most chassis components are on replaceable modules. If a circuit needs to be replaced, an exchange module can be plugged in by a service technician... usually in the home!

## Al's TV & Appliances

115 South Main Street, Culver  
Phone 842-2982



JUST ARRIVED AND  
DON'T KNOW WHICH WAY  
TO TURN?

Call

## Welcome Wagon

The hostess in your area will call on you with a variety of helpful community information along with gifts and greetings from local merchants.

Charlene Strang

Telephone 842-2986



# Weekend Traveler

## Magic Time In Michigan

**VISIT A MAGIC FACTORY!**  
By Thomas Zoss

The Abbott Magic Manufacturing Company is located in Colon, Michigan, yet the two hour drive from Culver can take you into another, perhaps happier world.

You drive into the "Magic Capital of the World" to arrive at the main factory building, which is illuminated from ground to roof with appropriate designs.

Inside, you are greeted by a real wooden floor just covered with huge illusions—including a couple of "disappearing cabinets" and guillotines which are called "head choppers" by the resident magicians, in a most businesslike manner. Of course, if all of these things really did what they were supposed to, there would be no trick to them...but, then again, they look quite real!

The ceiling is covered with road show posters of the greats of yesterday and today. One wall is covered with publicity photos of still more—many inscribed to Percy Abbott, the Australian founder of the company who passed away in the early 60's, or to his successors.

The salespersons who work here must be magicians. They will gladly demonstrate their wares... the effects only, however! You must buy the secrets when you



**DECORATED IN STYLE** is the front of the Abbott main factory. At one time the front was covered with skeletons, but the colorful magic decorations have now "appeared." **CITIZEN photo**

purchase the apparatus. Costs range from "pocket tricks" (the ones you can carry around) for a dollar or less, to "illusions" for thousands of dollars that you must carry around in your special rail-road cars.

Resident professional magician is Neil Foster, an internationally known entertainer. He has the ability to cause a large silver globe to float in mid-air, much as if possessed by spirits, as well as a few thousand other effects.

Mr. Foster also edits a magic

magazine published every month by Abbott's called **TOPS—THE MAGAZINE OF MAGIC**.

President of Abbott's is Recil Bordner, who is ever-present, although he is one of those people who seems to enjoy letting his comrades have the spotlight.

And there ARE spotlights, too! The showroom is fitted up with a complete stage, allowing larger effects to be demonstrated in performance conditions.

A visit to Abbott's is a fun thing to do, and all are welcome to visit the showroom from 8 to 12 and 1 to 5 every day except Sunday. Colon is located a little northeast of Sturgis, Michigan.

Be careful about the clock if you want to visit, because Michigan is now an hour later than Indiana.

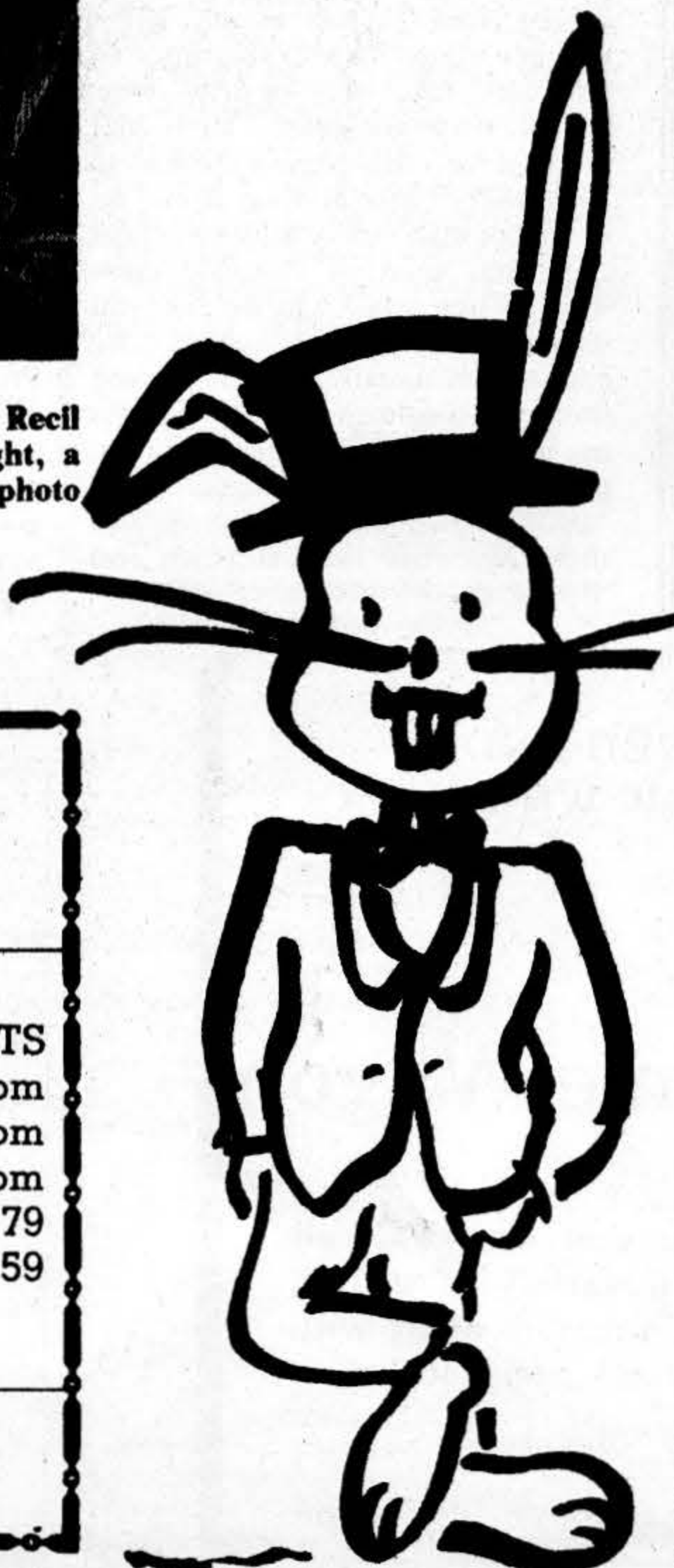
If you want to have some fun and enjoy a nice short trip, **VISIT A MAGIC FACTORY!**



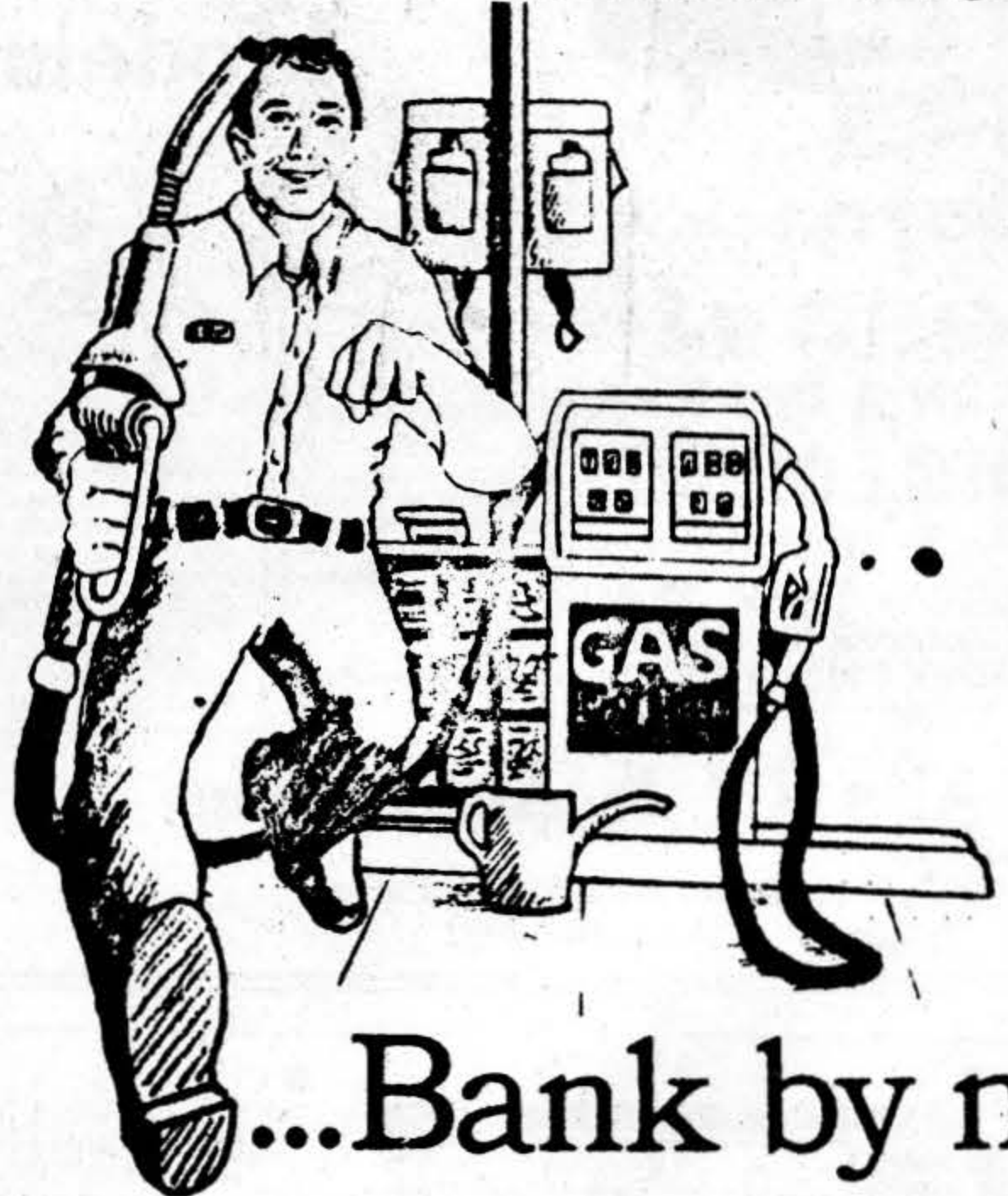
**"ZOMBIE"** — the floating silver sphere, is a specialty of the resident professional magician at the Abbott Magic Manufacturing Company, Mr. Neil Foster, who demonstrates for us. **CITIZEN photo**



**RABBITS** still come out of caps at Abbott's, as Neil Foster, left, and Recil Bordner, president of Abbott's, demonstrate to Dale Dickson, right, a first-time visitor from South Bend. **CITIZEN photo**



### Save Gas...



### ...Bank by mail

The State Exchange Bank, Culver, Plymouth, Argos, and the Farmers State Bank, LaPaz provide an easy, economical means of cutting back on your gasoline consumption: a checking account. A checking account will allow you to pay bills by mail, yet still receive perfect legal receipts, automatically. And, everyone's personal checking is free. Free personalized checks, too.

**THE STATE EXCHANGE BANK**

UNDER ONE MANAGEMENT

CULVER

PLYMOUTH

ARGOS

FDIC

"The Bank That GOOD WILL Built"

**FARMERS STATE BANK**

LAPAZ

## KEIM'S variety

**BATH ROOM SETS**

100% Nylon Pyle

Rug and Seat Cover

Non-Skid Back

Regular \$8.88

NOW \$6.88

SAVE \$2.00...

And Keep Your Feet Warm

**METAL WASTE BASKETS**

Bathroom

Living Room

Family Room

Reg. \$1.79

SALE \$1.59

## KEIM'S 5/10

Open 9:00 a.m. to 5:30 p.m.

Monday through Saturday



# THE CITIZEN BILLBOARD

## Advertising By Classification

### Classified Advertising Rates

Phone 842-2297

Up to 25 words, \$1.00 — 2 Weeks \$1.80 — 3 Weeks \$2.40 — 4 Weeks \$2.80  
Up to 50 words, \$2.00 — 2 Weeks \$3.60 — 3 Weeks \$4.80 — 4 Weeks \$5.60

Cash In Advance For Classifieds, Please.

### PERSONALS

REDUCE safe and fast with GoBese capsules and E-Vap "water pills." McKinnis Pharmacy. 8003p

### SALE

Hudon Typewriter Service  
103 West LaPorte Street, Plymouth.  
Sales - Service - Rentals, Typewriters  
and Adding Machines. Repairs on all  
makes. Royal Portable dealer.  
Phone 936-2728. TFN

If It's  
**Real Estate**  
See  
**C.W. Epley**  
REALTOR

450 Forest Place, Culver  
Phone 842-2061

Sales

Appraisals  
TFN

IF YOU HAVE any old fountain pens, (the ones that use liquid ink), we need them for our collection! If you have something that you think might be interesting, please call us, even if the pens are broken or parts are missing. The Culver Citizen, Tom and Bernadette Zoss. 842-2297. Thank you!

SPINET-CONSOLE PIANO. Wanted: Responsible party to purchase spinet piano on low monthly payments. Can be seen locally. Write Manager, P.O. Box 276, Shelbyville, Indiana 46176. 8006p

**FELKE  
FLORIST**  
Plymouth

Call Us Collect For

Flowers For Any

Occasion

We are as close as your phone

936-3165 COLLECT

TFN

NORTHERN PROPERTIES—Lake, river, stream lots, cottages and acreage. Also business and commercial lands. Write or call Great Northern Lakes and Lands, Inc., 924 East Ludington Ave., Ludington, Michigan.

### Thomas Real Estate

Gerald Thomas  
Broker

Virginia Thomas  
Salesman

Before Deciding, talk with us.

321 West Terrace Parkway  
Culver 842-2311

USE  
HOST  
**Dry Clean Carpet  
and use instantly**

Please  
phone for information

**Boetsma Home  
Furnishings, Inc.**  
Culver 842-2626

### Powers Realty



Follow The Key!

Lake Sales and Rentals  
Town, Farm, Commercial

Phones:  
Culver - 842-2710  
Plymouth - 936-3897



WANTED The Great American Novel... Have you ever written a book, a story, a poem? If so, perhaps you would like to see it in print, to share your creation with others. The Culver CITIZEN, continuing a long-time ago feature of regular segments of fiction and non-fiction prose with every issue, is seeking unpublished material for publication. Identity can be withheld if requested. Call or write Bernadette Zoss, Editor, for more details.

MATURE TIMBER - we buy logs and standing timber for top prices within 50 miles. Precision Pallets and Skids Inc., Walkerton, Indiana 46574. Phone 586-3068 Days, 586-3052 or 586-2688

FOR SALE: 1966 Pontiac Catalina 4 door hardtop. AC, PB, PS. In good running condition. Good tires and snow tires. 842-2872 8004

COMPLETE SERVICE—Rug cleaning any size, bulk cleaning professionally spotted, garments repaired-altered-restyled. Suits individually tailored. CULVER CLEANERS. Charles and Mary Werner Ricciardi. 842-2685 8012

**Sell It Fast  
With A Citizen  
Want Ad**

FOR SALE - Just about anything you like, right here in the CITIZEN classifieds!

PICKUP BED COVERS \$149 UP All Aluminum - slant side installed free 1 year warranty. ALROVE MFG. 1126 E. Jefferson, Mishawaka, Ind. 219-255-9385 Open Thurs., Fri., Sat., Sun., Mon. 9-6. TFN

SCANNERS—CB Radios. See our ad this issue. LDN Electronics. 8005

### Offered by THOMAS REAL ESTATE

•Four bedroom Culver home. Good condition and good location. The grounds are spacious, and a 30 X 45 ft. building can be useful to the hobbyist, or can be rented for extra income.

•Two bedroom Culver home. Mortgage payments will be much less than your present rent payments.

•Forty acre farm near Culver. Three or four bedroom home, small barn. Woods, pond, and many other assets.

THOMAS REAL ESTATE  
Culver 842-2311

### RENT

FOR RENT Clean, nicely furnished three room apartments. Also sleeping rooms. Phone 842-3442. TFN

WANTED TO RENT: Three bedroom home in Culver area. Call 653-2650. 8003

FOR RENT - Unfurnished three-bedroom country home on East Shore Drive with large kitchen, living and dining rooms, basement and two porches. References and deposit. Available immediately for one-year minimum lease at \$125 a month. Call Dave Gaskill, 842-3311, extension 213.

### HELP WANTED

HELP WANTED - Teacher aides - qualification: minimum high school diploma, some college preferred. Also assistant secretary-bookkeeper. Must be good typist and be knowledgeable in bookkeeping procedures. Apply in person at the Culver Community Schools Corporation, 222 North Ohio St., Culver. 8003

ROUTE SALESMAN WANTED — Established territory provides steady interesting rewarding work. Knowledge of animal health and farm products necessary. Send hand written resume giving details of your experience and character references. ZECHIEL FARM SERVICE, Route 1, Culver, Indiana 46511. TFN

### PROFESSIONAL DIRECTORY

#### OPTOMETRIST

Dr. F. L. Babcock

Office Hours by Appointment  
Tuesday, Thursday, Friday, 9 to 5  
Wednesday and Saturday 9 to 12  
Closed Monday  
Phone 842-3372

#### CLINICS

CULVER CLINIC  
820 Academy Road  
Phone 842-3351

G. W. Stevenson, D.O.  
General Family Practice  
Office Hours By Appointment  
Phone 842-3351

#### PHYSICIAN

LAKE SHORE CLINIC  
921 Lake Shore Drive  
Phone 842-3327

Michael F. Deery, M.D.

#### PHYSICIAN

General Medicine and Obstetrics  
Office Hours by Appointment  
M. GEORGE ROSERO M.D.  
17 East Main Street, Kewanna  
Office Hours by Appointment  
Phone: Office 653-2383  
If no answer phone 653-2565

#### DENTIST

Thomas M. Pugh, R.P.H., D.D.S.  
Office Hours by Appointment  
1001 Lake Shore Drive  
Phone 842-3465

#### APPLE

#### SPECIAL

Cooking Apples  
\$3.95 Bushel  
Winesap • McIntosh  
Golden Delicious  
And Others

#### BIGLEY ORCHARDS

West 18B Road  
Culver, Indiana  
Phone 842-2933

Open Daily 9:00 a.m. to 6:00 p.m.  
Closed Sundays

For  
**SINUS  
Discomfort  
TAKE  
sinarest**



**SPECIFICALLY  
FORMULATED FOR  
SINUS HEADACHE  
AND CONGESTION**

PENWALT CORP.  
PHARMACRAFT  
CONSUMER PRODUCTS

Box 1212  
Rochester, New York 14603

**ITCHING  
LIKE MAD?**

Get this doctor's formula!

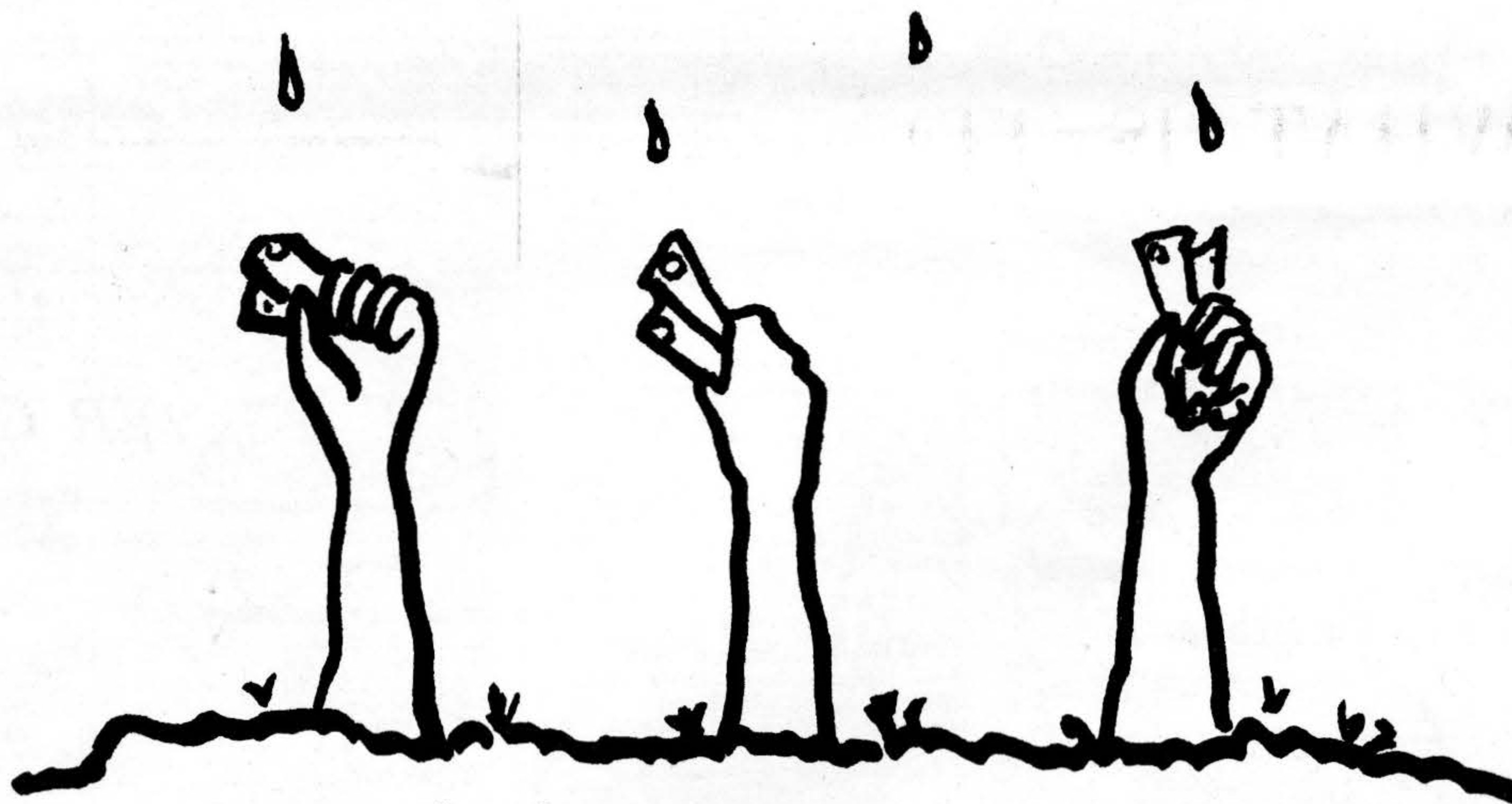
Zemo speedily stops torment of externally caused itching... of eczema, minor skin irritations, non-poisonous insect bites. Desensitizes nerve endings. Kills millions of surface germs. "De-itch" skin with Zemo—liquid or Ointment



# Advertisements



Plant Ideas



that grow  
into CUSTOMERS!

THE CULVER CITIZEN

ESTABLISHED JULY 13, 1894

we grow on you





## Here Sunday at Eppley

### "TWIGS" COMING TO EPPLEY

"Twigs," a poignantly humorous comedy by George Furth, will appear at Culver Military Academy's Eppley Auditorium at 8:15 p.m. Sunday, January 20th, as an attraction in its Concert Theater Series.

Acclaimed by Walter Kerr as "the season's most satisfying evening" and by Johnny Carson as "one of the best comedies I've seen on Broadway in years," the production will feature veteran actress Vivian Blaine in the choice role that won a Tony Award for Sada Thompson.

Miss Blaine made her theatrical debut in her portrayal of Adelaide in the Broadway production of "Guys and Dolls." Since that time she has starred in such plays as "Zorba," "A Hatful of Rain," "Company" and "Say, Darling" to name but a few. She has also performed in several motion pictures and has been featured in

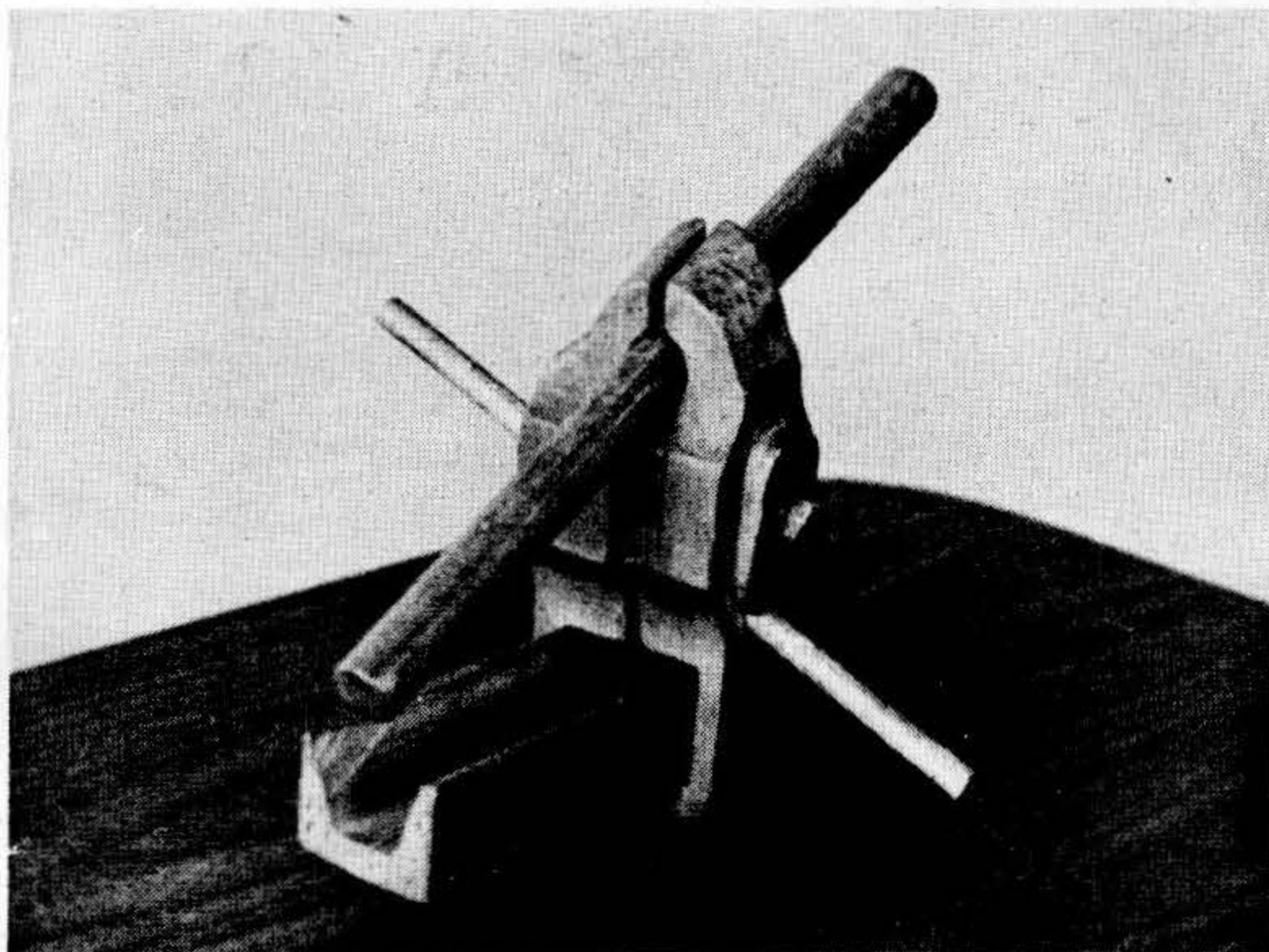
numerous TV shows, highlighted by the Bob Hope, Jimmy Durante, Milton Berle and Jackie Gleason shows.

In "Twigs" Miss Blaine plays four different women of a loosely knit family. The first three scenes concern three middle-aged sisters individually. The last scene deals with their mother, the tree from which the "Twigs" have sprung. These four ladies have much in common. They are all cheerful, plucky and not overly bright women who like to talk, but whose circumstances are quite different from one another.

But the action doesn't begin and end with the curtain separating each scene. While the stage is changed between sequences Miss Blaine is rushed to a special area where, in full view of the audience, a barrage of wardrobe personnel, hairdressers and make-up men converge on her and change her into a different member of the family.

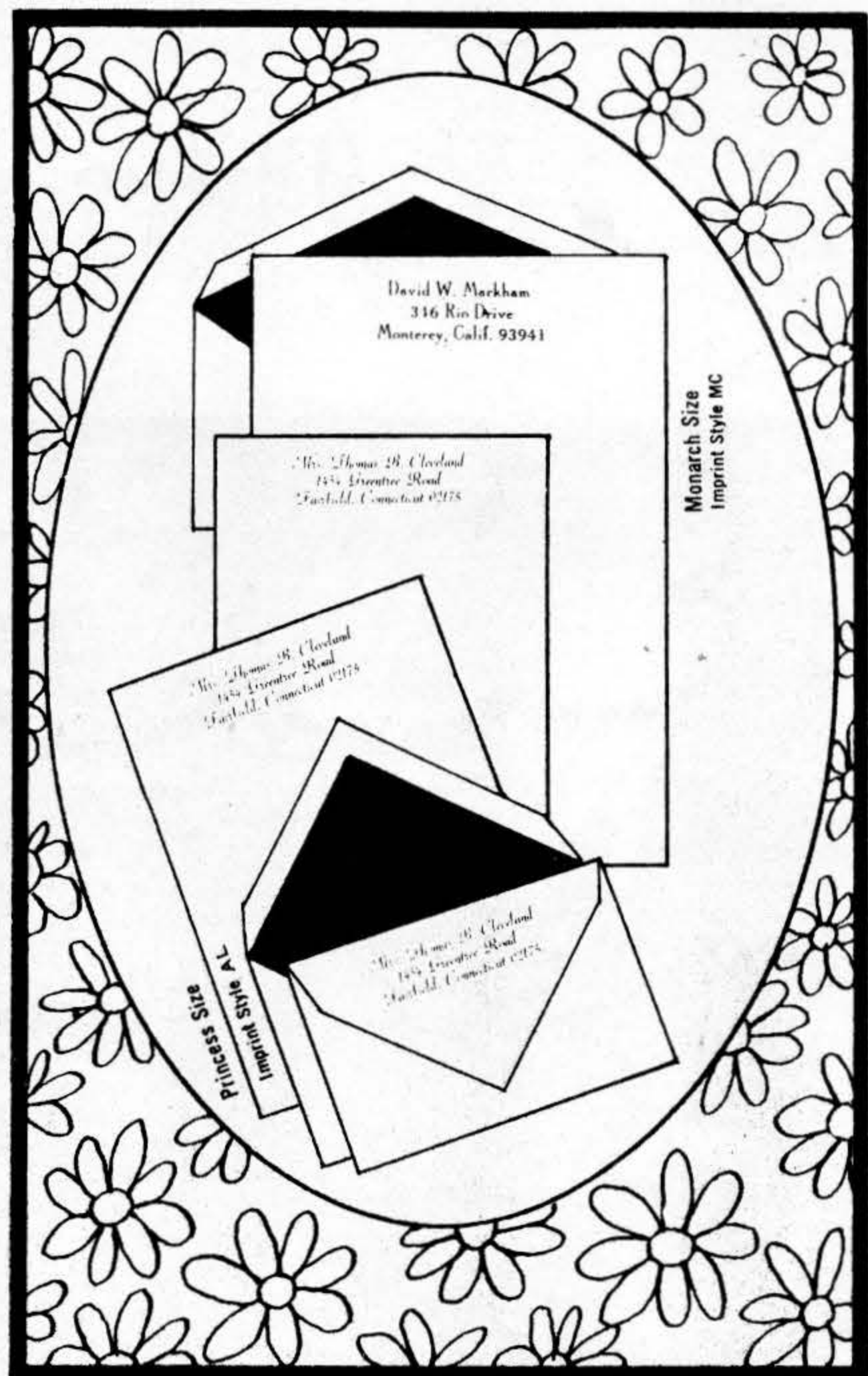


## WHAT IS IT?



YOUR GUESS IS PROBABLY AS GOOD AS OURS...BUT WE WANT TO KNOW WHAT THIS GADGET IS!!! Have you any ideas? Send your suggestions to The CITIZEN office and we'll publish them in the near future. If you want to see the original, it is now in the hands of Marilyn Kelly at The Kelly Shop in Culver. Found in an attic, the wooden enigma remains a mystery.

CITIZEN photo



## Rytex Personalized Stationery February Sale

RYTEX FLIGHT Now **5<sup>25</sup>**  
(regularly \$10.50)

A medium-weight paper with a discreet laid-mark pattern. Envelopes are lined-in-blue to keep messages confidential. Ideally suited for air-mail. Choice of crisp white or blue paper with printing in bluest-blue ink. Printing style choice as shown. 150 princess sheets & 100 matching envelopes, or 100 monarch sheets & 100 matching envelopes.

### Bonus Value

An additional 50 matching unprinted sheets for use as second pages (regularly \$1.50) now only \$1.00 with your order.

## THE CULVER CITIZEN

### MAIL ORDER COUPON

The Culver Citizen  
Box 90, Culver, Indiana 46511

RYTEX FLIGHT \_\_\_\_\_ boxes at sale price of 5.25 per box

**SPECIAL BONUS:** ☐ (check) include 50 matching, unprinted, sheets for only \$1.00 a box more.

**CHECK** ☐ Princess WHITE (6200) ☐ Monarch WHITE (6400)

**CHOICE:** ☐ Princess BLUE (6250) ☐ Monarch BLUE (6450)

BLUE INK ONLY Imprint choice: ☐ AL ☐ MC

Imprint Name \_\_\_\_\_

Street \_\_\_\_\_

City \_\_\_\_\_ State \_\_\_\_\_ Zip \_\_\_\_\_

**Ordered by:** \_\_\_\_\_

Street \_\_\_\_\_

City \_\_\_\_\_ State \_\_\_\_\_ Zip \_\_\_\_\_

☐ Charge ☐ Check or M.O. enclosed \$\_\_\_\_\_ Sorry, no C.O.D.'s

2-Way Radio — Scanners — Sales & Service

## L D N Electronics

Larry Norman, Owner  
Route 4, Plymouth, Indiana  
Licensed

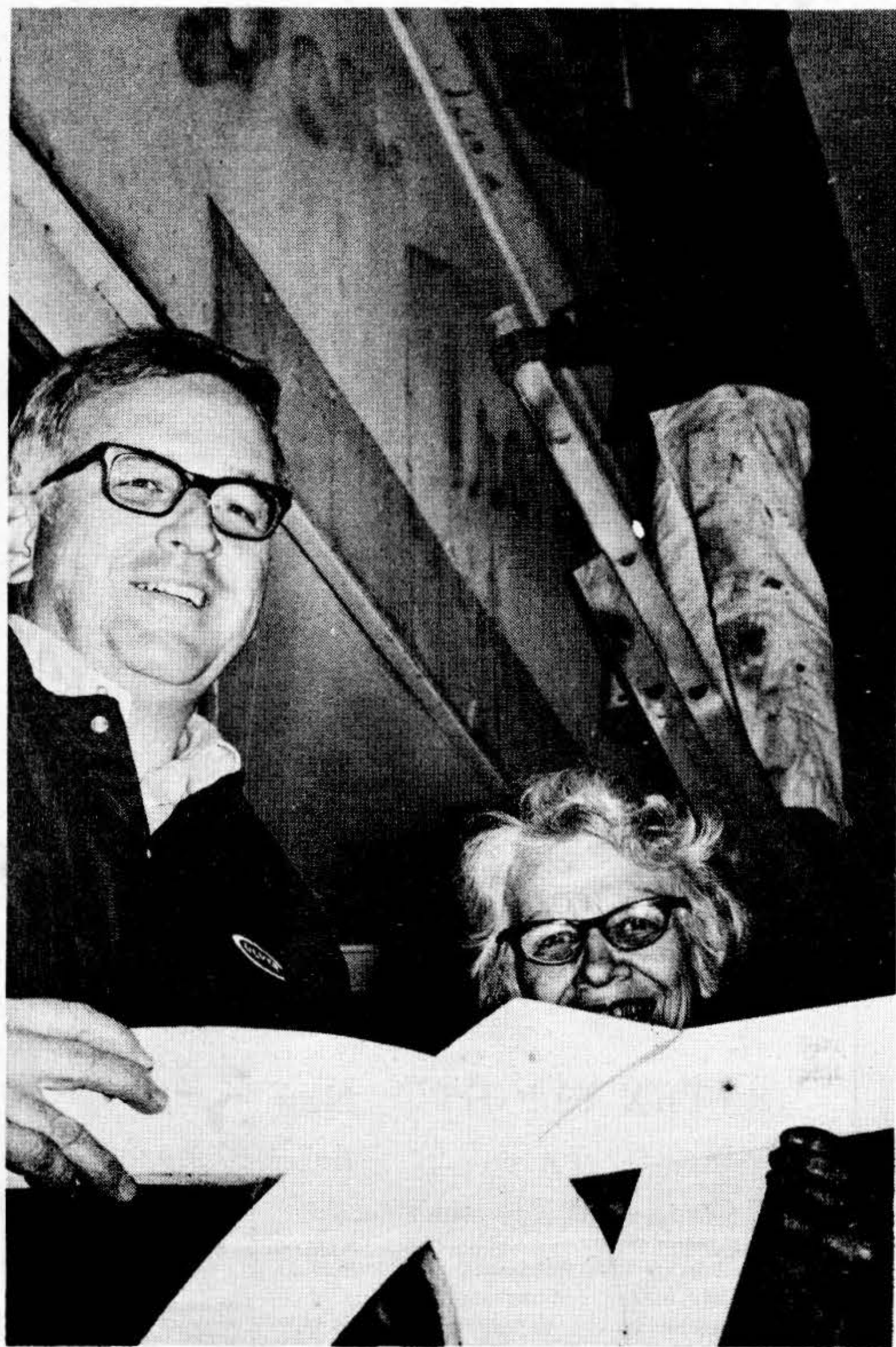
Three Miles East of State Road 17 on West 14B Road

Open Tuesday & Thursday 6 To 9 p.m.  
Saturday 10 a.m. To 6 p.m.



## These Firms Have....

## Confidence In Culver!



**MR. PETER TRONE AND MRS D. TRONE** hold the initials for their sign during a recent repainting of the Trone Building on North Main Street in Culver. The building also houses two other businesses, **DON'S BARBER SHOP**, and **ALBERT THE CLOTHES DOCTOR**.



**CHUCK'S STANDARD** is currently undergoing a face lift as the Standard Oil Company adds a new facade to the building on North Main Street in Culver.



**A NEW FOOD SERVICE BUILDING** is under construction on Lake Shore Drive across the street from the Culver beach, filling the vacant lot which was dormant for months in this prime commercial area.



**BOETSMA HOME FURNISHINGS** is expanding its storage space with a special warehouse specially equipped to store carpeting more efficiently. This will release room in the other storage buildings at Boetsma's for increased furniture inventory.

...Do You?