

15¢

THE CULVER CITIZEN

VOLUME 80, NUMBER 5

JANUARY 31, 1974

BANK SHOWS

"...significant gains..."

STATE EXCHANGE BANK HAS RECORD YEAR

Combined resources of The State Exchange Bank, Culver, Plymouth, Argos, and the Farmers State Bank, LaPaz, under one management, reached a record figure of \$102,892,197.31 according to the 1973 financial report. It is believed to be the first time that total assets of a banking firm in the immediate area have exceeded \$100 million.

Performance in 1973 included a record increase in earnings, highest in the history of the bank. An \$11,492,641 increase in combined resources, a 12.57 per cent climb; a 12.37 per cent advance in deposits; and a 17.5 per cent increase in loans, was reported by Fred E. Adams, executive vice-president, at the annual dinner meeting of stockholders held in the Friendship Room of The State Exchange Bank, Argos.

Mr. Adams reported a 12-month advance of combined deposits of \$10,498,118.13 to a record \$95,331,963.78. Increase in depo-

sits was reflected in both savings and checking accounts.

Loans, which advanced \$9,563,644.30 to a combined total of \$64,014,041.18, showed continuing growth in serving the personal, mortgage, installment financial needs and requirements of individuals, business, industry, institutions, and farms.

With respect to farm loans, the report to more than 300 stockholders showed that The State Exchange Bank continues to rank among the nation's top banks in agricultural loans. Mr. Adams pointed out that if the agricultural loans of The State Exchange Bank were combined with those of the Farmers State Bank, the local bank would rank in the top 60 banks of more than 14,000 in the nation in farm loans.

The State Exchange Finance Company, an affiliate of The State Exchange Bank, showed total resources of \$22,587,043.00, an all-time high for the firm established 50 years ago in February, 1923. Hampton Boswell, vice president and manager, in his report to stockholders, said the 16½ per cent increase in 1973 amounted to \$3,222,181.39.

Speaking at the annual meeting, W.O. Osborn, president, told stockholders, "In 1973 we have again recorded significant gains for

Continued On Page Two

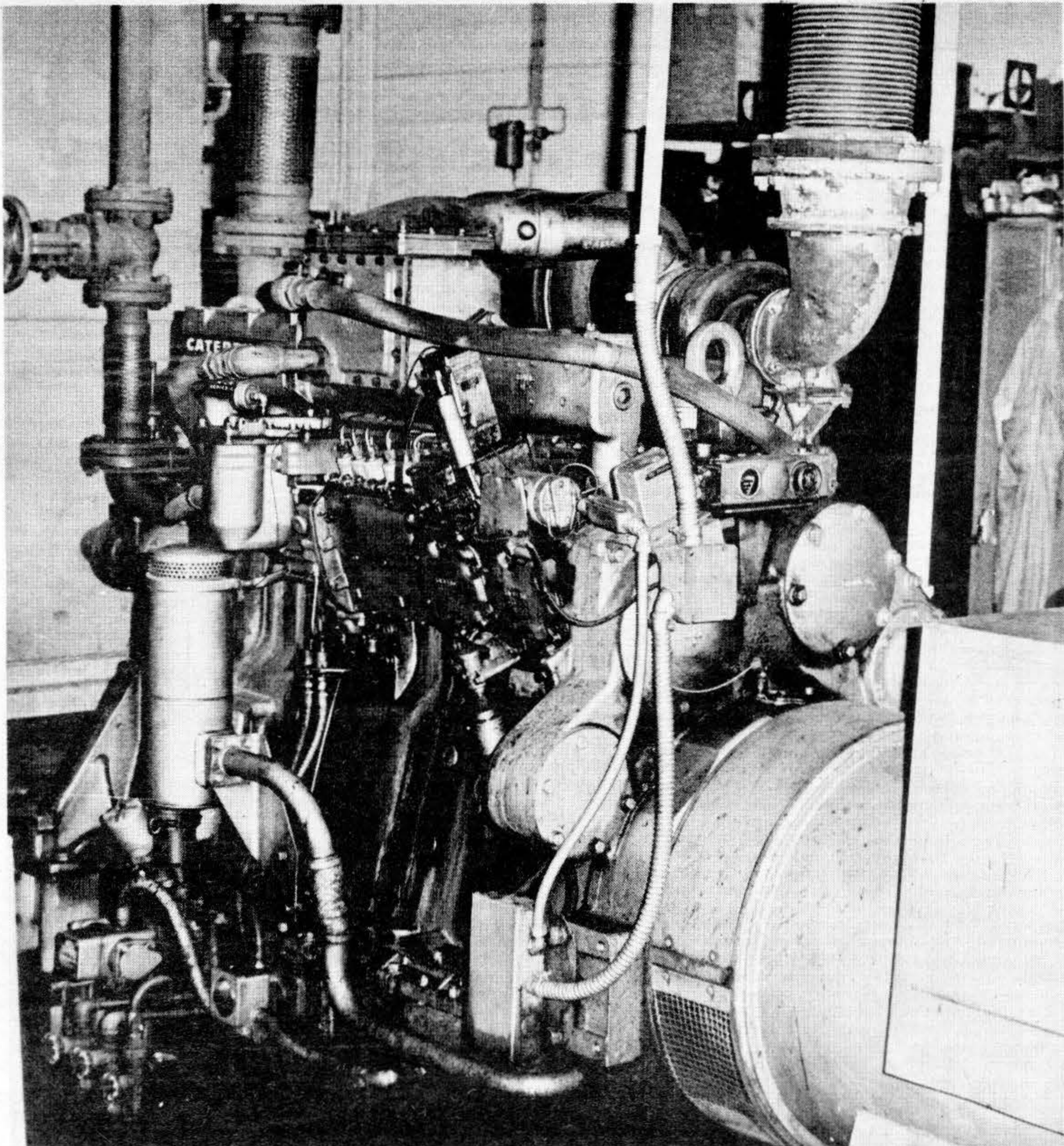
Cub Scouts

SCOTT CULTICE WINS THE PINEWOOD DERBY

Cub Scouts of Pack 290 and their families gathered at Wesley Methodist Fellowship Hall last Thursday night. The main event was the annual Pinewood Derby. The cars, not to exceed five ounces in weight, were of every color and decorative design. Last year's winners in the race received their belated trophies. The 1973 winners were Scott Cultice and Gary Shaffer. This year Trent Bennett won for Den 4 and Scott Cultice won again for Den 1. Both were given individual trophies. The over-all traveling trophy was awarded to Den 1 in the race-off.

The attendance pennant was awarded to Den 1. Akela, the ceremonies leader, was in full dress to award Den 4 their Bobcat pins during the Bobcat Introduction. They were: Trent Bennett, Paul Cooney, John Surber, Chris Steely, and Bill Vantwoud.

Jeff McKinney was awarded his first year service star.



HIGH SCHOOL POWER PLANT— This is one of three electrical generators that provide 100% of the electricity for the Culver Community High School building.

In addition, heat from the engines provides some of the heating and cooling energy for the building. Because the school building does not have available power from

utilities, CCHS is vulnerable more than other schools when heating oil and diesel fuel become scarce or expensive. See story this page.

CITIZEN photo

School Officials Cope With Energy Shortage

CCHS ESPECIALLY VULNERABLE

The Culver Community Schools Corporation will survive the energy shortage this winter through cut-backs in energy usage, but the need to lower temperatures and cut non-essential school bus usage illustrates the need for schools to exercise care in future years.

The Culver Community High School building is very vulnerable in this shortage, since it is so dependent upon fuel oil. As the illustration on Page One demonstrates, the high school building even generates its own electricity, using large oil-operated generators. If these fail, there are no wires

to use electricity supplied by the local utilities.

The Board of Trustees of the school corporation took a large portion of a recent meeting to discuss ways of cutting fuel consumption in the system.

Following that meeting, all school fan buses were eliminated, unless gasoline could be obtained from local retail stations. Plans were also presented to organize car pools for school bus drivers. A band trip to St. Louis was also cancelled, partly because of the problems of travel in the gasoline shortage.

In a move that was to help considerably in the reduction of Culver gasoline consumption, parents were asked to restrict the use

of automobiles by school children. School authorities report that there is no noticeable change in the number of student drivers to the high school, however.

Most of these steps have been taken or promised in Culver, and only the cooperation of Mother Nature and the oil companies will determine whether the school year will end without interruption.

FOOD STAMP OFFICE WILL BE CLOSED

The Food Stamp office will not be open at the Town Hall in Culver on Tuesday, February 12th, since Lincoln's Birthday is a holiday.

Representatives of the Food Stamp office will be in Culver on Wednesday, February 13th, from 9:00 to 11:30 a.m.

NEW PLANT

SECOND MCGILL PLANT SCHEDULED IN VALPO

James S. Eason, Vice-President and general manager of the McGill Manufacturing Company, Inc., Electrical Division, announced this week that McGill will build a second electrical division plant in Valparaiso. Contracts for the construction of the plant have been signed for work to begin on approximately March 15th. The plans call for a 60,000 square foot building to be located on 23 acres in Valparaiso.

The new facility will relieve the parent plant in Valparaiso of wire guard production, and will provide much needed manufacturing space for precision electrical switches. About 50 people will be moved to the new plant, which will have a potential to exceed 200 production workers.

McGill's corporate employment is currently over 1300, with approximately 1100 in the Valparaiso plants. Annual sales exceed 35 million dollars.

Cheering Trophy

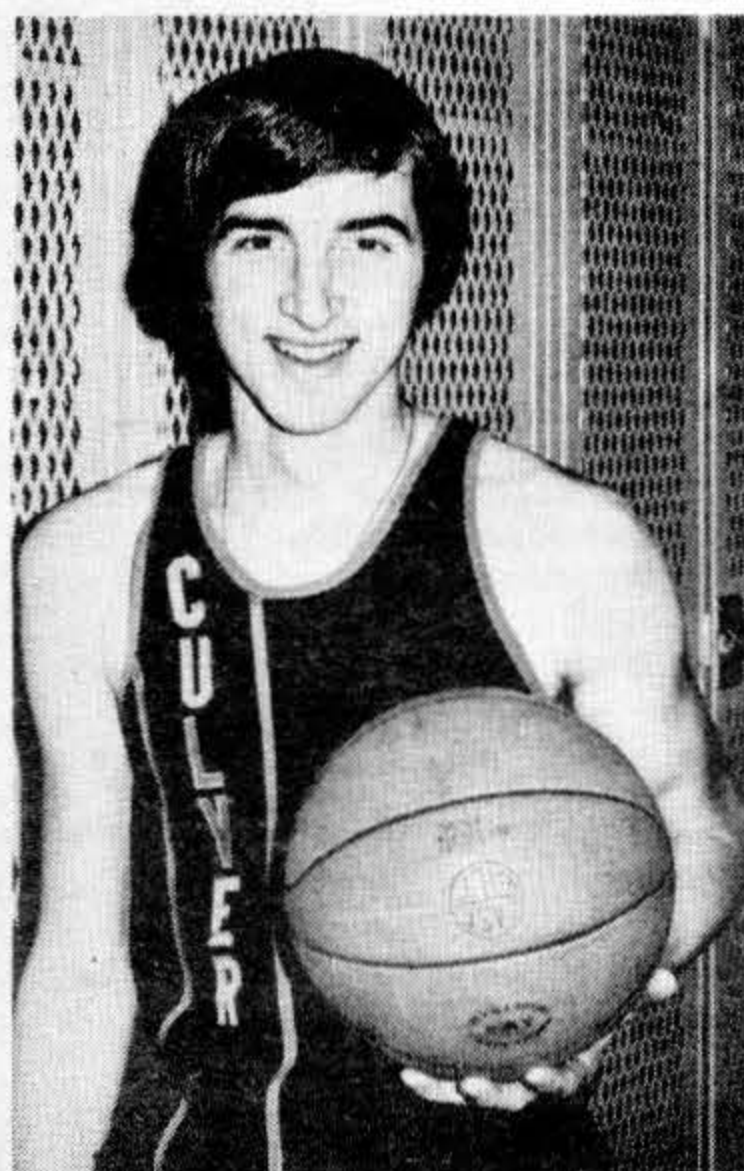


BEST CHEER BLOCK—These cheerleaders were awarded this trophy for their efforts at the recent Bi-County Tourney. Representing

CCHS were, left to right, Pam Taiclet, Donna Peters, Barbie Thews, Kathi Clifton, and Twyla Shaffer.

CITIZEN photo

Honored



HONORED ON TEAM—Larry Faulstich, 12th grade basketball starter for Culver Community High School, was named by the South Bend Tribune Monday night to the "All Bi-County Team" following his star performance in the Bi-County Tourney this past weekend.

The 6'3" forward is the son of Mr. and Mrs. Lawrence Faulstich. He scored 33 points and pulled down 15 rebounds in the two games, including a high 25 points against Argos. CITIZEN photo

Remember This?



Photograph of the Township School at Burr Oak, taken around 1914.

Photograph Courtesy of Mrs. Ray Kenney

BANK SHOWS SIGNIFICANT GAINS

Continued From Page One

which we are grateful to the customers we are privileged to serve, and to our employees. We take pride in our continuing and sound progress, and in the service which we extend to people, to business, to government agencies, to farmers, to industry.

"In this respect, in the brief span extending back to 1960 our banks serving communities of the area have far more than doubled their resources. The actual increase exceeds \$71,000,000. Though there are many current concerns, we are confident that the area's growth and progress will again be noted in 1974. In this respect our directors and officers are continuing plans to implement, to extend, and to provide for greater service."

In a series of reports it was pointed out that major construction, remodeling and redecoration of facilities, and installation of new accounting equipment initiated at various times during the past year are proceeding on schedule. Some have been completed. Among those presenting reports were Charlotte Jung, secretary, and Margaret Swanson, auditor. Officer and Manager reports were presented by Ron McKee, Plymouth, Allen Cummins, LaPaz, and Jack Carpenter, Argos; and D.E. Walker and John Deery.

Chairman Adams introduced new staff members and new stockholders.

The 15-member board of directors re-elected by the stockholders for the year 1974 were: W.O. Osborn, Carl M. Adams, Hampton Boswell, Margaret Swanson, Oliver C. Shilling, A.N. Butler, and Fred E. Adams, Culver; W.L. Johnson, LaPaz; Glenn Overmyer, Burr Oak; George E. Eley and Charlotte J. Jung, Argos; Edwin C. Boswell and Bryce Burton, Rochester; and William F. Laramore and Robert M. Koch, Plymouth.

NIPSCO DIVIDEND

Directors of Northern Indiana Public Service Company have declared a quarterly dividend of 34 cents a share on the outstanding common stock of the company, Dean H. Mitchell, NIPSCO chairman and chief executive officer, announced last week.

The dividend is payable March 20, 1974, to shareholders of record at the close of business February 28, 1974.

Zipers replaced with best quality. **Albert the Clothes Doctor, Main Street near Washington, Culver. Phone 842-3513.**



Reward To Policeman?

Arsonists set fire to a large warehouse one night, and the owners offered a \$10,000 reward for catching the culprits. A few days later, an alert policeman picked up the guilty pair in a bar.

In this situation, was the policeman entitled to the \$10,000? He insisted that he was, but a court ruled against him. The court said he could not collect a reward for doing what the city was already paying him to do: capture criminals.

This is the rule in most circumstances, that a policeman (or other public employee) cannot demand a reward for merely doing his job.



Otherwise, explained one judge, "whenever a crime was committed, instead of speedy efforts for the arrest of the offender, there would be a holding back in the hope that a reward would be offered."

On the other hand, an officer usually can collect the reward if what he did was outside the scope of his duties. For example:

A deputy sheriff, on vacation in a neighboring county, had occasion to help in the capture of a bank robber. Learning that the bank had offered a reward, he decided to put in a claim for it.

This time, the court ruled in his favor. The court said that, having acted strictly on his own, he had as much right to the reward as any other deserving citizen.

One famous case involved a hotel fire so fierce that firemen gave up their efforts to get into the building. Suddenly an anguished onlooker cried:

"I will give \$5,000 to anyone who will bring out my wife!"

One fireman, galvanized into action, fought his way through the flames and managed to bring the woman out.

Later, when he tried to collect the reward, the husband argued that rescuing people was part of a fireman's job. But the court said a fireman's job did not include rescues involving such a dire risk to his own life. For action above and beyond the call of duty, said the court, this fireman had earned the reward.

© 1974 American Bar Association

OBITUARY

CHARLES L. HARTLE

Mr. Charles L. Hartle, 72, of Route 2, Rochester, passed away Thursday, January 24, 1974 at 4:30 p.m. at the home of his daughter Mrs. Charles Young, Route 6 Elkhart of a sudden heart seizure.

Mr. Hartle was born November 5, 1901 in Pulaski County, to Walter and Caroline (McGrew) Hartle. He was a resident of Fulton County for the past 43 years. He was retired from the Culver Military Academy, and was a member of Mt. Hope United Methodist Church.

He was married October 7, 1922, in Winamac, to Clara E. Kepffer. She preceded him in death December 22, 1965.

Surviving Mr. Hartle are five sons, Kenneth W., Rochester, Leland H., Warsaw, Richard A., Culver, James A., Plymouth, and Paul L., Rochester; 4 daughters, Imogene R. DeWitt, Lafayette, Dorothy P. Young, Elkhart, Joane Lowell, Niles, Michigan, and Rosella C. Bollhoefer, Rochester; one brother, O.C. Hartle, LaPorte; 40 grandchildren and 16 great-grandchildren.

Services were conducted at 2:00 p.m. Sunday, January 27th, at the Mt. Hope United Methodist Church, Route 1, Culver, with Rev. Mark Day, pastor, and Rev. Kenneth Overmyer, pastor of the Walnut Creek United Methodist Church, Warsaw, officiating. Burial followed in the I.O.O.F. Cemetery, Leiters Ford. The Bonine Funeral Home, Culver, was in charge of arrangements.

DAUGHTERS OF RUTH NAME "SECRET PALS"

The Daughters of Ruth of the Culver Bible Church held a meeting last Tuesday at the church with fourteen members and two guests present. Mrs. Tony Follmer and Mrs. Ed Clark were hostesses for the evening, and Mrs. Clark led the devotions.

Mrs. Joe Boetsma, Jr., president, was in charge of the business meeting. Names were drawn during the meeting for "Secret Pals" for the coming year.

The remainder of the evening was spent knotting a quilt for a missionary. Refreshments were served by the hostesses.

STAY AWAKE ITCHING?

Let doctor's formula stop it.

Zemo speeds soothing relief to externally caused itching of eczema, minor rashes, skin irritations, non-poisonous insect bites. Desensitizes nerve endings. Kills millions of surface germs, aids healing. "De-itch" skin with Zemo, Liquid or Ointment. Quick relief, or your money back!

SUBSCRIPTION ORDER

Name _____

Address _____

City _____ Zip _____

☐ One Year \$5.00

☐ Two Years \$8.50

ADD FIFTY CENTS FOR SUBSCRIPTIONS OUTSIDE INDIANA

SEND TO: The Culver CITIZEN, Post Office Box 90, Culver, Indiana 46511
Please allow three weeks for entry of new subscription

THE CULVER CITIZEN

Established July 13, 1894

Published Every Thursday Except For
The Week of July Fourth And The Week Of December Twenty-Fifth By The
Culver Citizen Corporation
Post Office Box 90, Culver, Indiana 46511
All Hours Telephone (219) 842-2297
Second Class Postage Paid at Culver, Indiana 46511

SUBSCRIPTION RATES

One Year \$5.00

Two Years \$8.50

Fifty Cents Additional For Subscriptions Outside Indiana

Society

WESLEY ADULT FELLOWSHIP MEETS FOR DINNER

The Adult Fellowship of the Wesley United Methodist Church will meet today, January 31st, at 6:30 p.m. for a carry-in dinner. The hosts, Mrs. Beatrice Taylor and Mrs. Faith Hippensteel, will furnish bread and beverages. The program will be provided by Mr. and Mrs. Emory Davis, who will tell of their trip to Europe.

SPECIAL FILM TO BE SHOWN AT CULVER BIBLE CHURCH

In a day when many Christian parents search for answers, the film "My Son, My Son," the true story of Bernard Palmer and his son Barry, offers significant introspection and guidelines. The film will be shown at the Culver Bible Church at 7:00 p.m. Saturday, February 2nd. Also featured on the evening's program will be a special Bible Quiz. Participants will be youth groups from area churches who are members of the Youth On The March Rally. The program will also include special singing from some of the young people of the Culver Bible Church.

SENIOR CITIZENS MEETING

The Culver Senior Citizens met at 1:00 p.m. Tuesday, January 22nd at Zion Hall, Grace United Church of Christ. Twenty-three members came from Plymouth, Monterey, and Culver for an afternoon of games. Refreshments were served by Agnes Podell of Monterey.

TRI KAPPA OFFICERS ATTEND HOOSIER ART SALON PREVIEW

Mrs. Bryce Rohrer, Province Ten Officer of Walkerton, and Mrs. Chester Cleveland and Mrs. R.R. Hippensteel of Epsilon Nu Chapter of Kappa Kappa Kappa, Inc. Sorority attended the 50th annual Hoosier Salon Patrons Association Buffet Supper and Preview of the Hoosier Salon held in the Auditorium of the William H. Block Co., Indianapolis, Sunday evening, January 20th. In 1928 Tri Kappa began to award \$450.00 to women artists exhibiting in the Hoosier Salon. From 1932 to 1971 the award was used as a purchase prize and the Tri Kappa art collection is now housed at Rose-Hulman Institute, Terre Haute, and will eventually be exhibited in the new library, now

under construction. The Sorority established in 1968 an annual award of \$400.00 for the Jury Prize of Distinction for the Outstanding Painting, Any Medium, in memory of Beryl Showers Holland, a founder of Tri Kappa and president of the Hoosier Salon Patrons Association Board of Directors for 22 years. In 1972 another Merit Award in the amount of \$125.00 for a Jury Prize of Distinction was added.

"THE FISHERMAN" TO APPEAR AT CRUSADE BANQUET

"The Fisherman" of the Philpot evangelistic team will be introduced on Tuesday, February 5th at the Greater Marshall County Crusade Banquet. The banquet will be held at the Plymouth National Guard Armory at 6:30 p.m. There has never been a major revival that was not enhanced by music. For over two decades, the Ford Philpot Crusades across the United States and around the world have been characterized by dynamic preaching and inspiring music.

A board of directors of forty-five businessmen from all over America guides the work of the Ford Philpot Evangelistic Association, which has its headquarters in Lexington, Kentucky. Its many activities include television production, a bi-monthly magazine, missionary efforts, and church, city-wide and area-wide crusades. Ford Philpot Crusades are particularly noted for their emphasis upon local church planning and involvement. How to sustain the

converts in the local church program following the crusade is an important question. Therefore, plans for follow-up are given equal priority with plans for the preaching mission itself. In his preaching ministry, Mr. Philpot continues to stress more and more the need for a personal commitment of the average church member in America today. This commitment must be one which causes the individual to become involved with the crucial moral and social problems in our present society.

"The Fishermen" comprise the music team in Dr. Philpot's crusades today. They are also heard and seen on each of his syndicated television programs, "The Story," now seen coast-to-coast. These three singing men have developed a gospel-sacred style that draws from the entire spectrum of religious music. Whether a modern-day gospel song, a youth-oriented contemporary ballad, or an old-fashioned song from the hymnal, "The Fishermen" give each song the dignity and professional touch it deserves.

**'Love One Another'—
'Love Your Enemies'**
These words of Christ Jesus are found in the Christian Science Lesson-Sermon this week entitled "Love."
The Lord is my shepherd; I shall not want. Ps. 23:1 is the Golden Text, and the thought of God's care for his flock is developed throughout the lesson.

The members of First Church of Christ, Scientist, Plymouth would be happy to welcome you to their services, and to use the Reading Room at 428 South Michigan Street.

WHAT IS YOUR SOURCE OF STRENGTH?

To find out where your strength is, start with God. He is Life and Love. Then go to you. You are the image and likeness of God.

Broadcast this week over many stations including:

WSBT 960 kc
Sunday 9:15 a.m.

the TRUTH
that HEALS

a Christian Science series

YES!
IN OUR REPAIR SHOP
WE CAN
REBUILD YOUR
CARBUREATORS
AND DISTRIBUTORS
Most American Cars
AND TURN MOST
BRAKE DRUMS

CULVER AUTO SUPPLY
Call Us First — 842-3658

**VACUUM
CLEANER**
Sales & Service

LEROY DAVIS
715 Academy Road
Culver, Indiana
Telephone 842-2219

Church Directory

CULVER BIBLE CHURCH
Rev. Edward Clark, Pastor.
Sunday School 9:30 a.m., Morning Worship 10:45 a.m., Young People's Service 6:15 p.m., Evening Worship 7:00 p.m., Wednesday Night Prayer Meeting and Bible Study 7:30 p.m., Thursday Night Home Bible Study 7:30 p.m.

UNION CHURCH OF THE BRETHREN
At the corner of State Road 17 and 10B Road. Bert Cramer, Superintendent, Shared Pastorate: Bruce Weaver, Wesley Brubaker, Larry Banks.
Sunday Church School 9:30 a.m., Worship 10:30 a.m.

BURR OAK CHURCH OF GOD
Darrell G. Maddock, Pastor, Mrs. John Drang, Sunday School Superintendent.
Sunday School 9:45 a.m., Morning Worship 10:45 a.m., Senior Youth Fellowship 6:30 p.m., Junior Youth Fellowship 6:30 p.m., Evening Worship 7:30 p.m., Wednesday "Hour of Power" Service 7:30 p.m.

ZION GOSPEL CHAPEL
Steven Bradley, Pastor, Marion Kline, Sunday School Superintendent, William Sheridan, Assistant Superintendent.
Sunday School 9:30 a.m., Morning Worship 10:45 a.m., Evening Service 7:30 p.m., Mid-Week Service on Thursday at 7:30 p.m.

CULVER MILITARY ACADEMY MEMORIAL CHAPEL
Rev. Calvin R. Cough, Chaplain.
Worship Service 11:00 a.m., Visitors are always welcome.

GRACE UNITED CHURCH OF CHRIST
Rev. John Krueger, Pastor.
Church School Classes 9:15 a.m., Worship Service 10:30 a.m.

EMMANUEL UNITED METHODIST CHURCH
Rev. Maurice Kessler, Pastor.
Worship Service 9:30 a.m., Church School 10:35 a.m. Wednesday: Mid-week Service 7:00 p.m., Choir Rehearsal 8:00 p.m.

WESLEY UNITED METHODIST
On the corner of School and Lewis Streets. Rev. Earl W. Sharp, Minister, Mrs. Ted Strang, Director of Christian Education.
Church School 9:30 a.m., Worship Service 10:40 a.m.

SAINT MARY'S OF THE LAKE CATHOLIC CHURCH
"The Church With The Gold Crosses"
Rev. Joseph A. Lenk, Pastor.
Saturday Mass 5:30 p.m., Sunday Mass 11:00 a.m., Religious Instruction for Young Adults 9:30 to 10:30 a.m. Sunday, Confessions before Mass.

TRINITY LUTHERAN CHURCH
Located at 330 Academy Road, Culver. Rev. Roger L. Sommer, Pastor.
Sunday Worship 9:00 a.m., Sunday School and Bible Class 10:15 a.m., Women's Guild on First Mondays 8:00 p.m. and Alternate Thursdays 7:30 p.m.

GILEAD UNITED METHODIST
Rev. Ray Kuhn, Pastor, Grover Shaffer, Superintendent.
Worship Service 10:00 a.m., (11:00 a.m. on Second and Fourth Sundays).

LEITERS FORD METHODIST
Leon Welling, Sunday School Superintendent.
Church School 10:00 a.m., Worship Service 11:00 a.m., M.Y.F. on Second and Fourth Sundays.

LEITERS FORD CIRCUIT
Rev. Phillip Lutz, Pastor

MONTEREY METHODIST
Worship Service 9:10 a.m., Church School 10:15 a.m.

MOUNT SANTA GROVE PARISH
Rev. Mark Day is pastor of the three churches that make up the Mount Santa Grove Parish. They are:

MOUNT HOPE UNITED METHODIST
Robert C. Kline, Superintendent, Church School 10:00 a.m., Worship Service 11:00 a.m. every Second and Fourth Sunday.

SANTA ANNA UNITED METHODIST CHURCH
Phillip Peer, Superintendent, Church School 10:00 a.m., Worship Service 11:00 a.m. every First and Third Sunday.

POPLAR GROVE UNITED METHODIST
Ellis Clifton, Superintendent. Worship Service, 10:00 a.m., Church School 10:45 a.m.

MONTEREY SAINT ANN'S CATHOLIC CHURCH
Sunday Mass 9:00 a.m., Weekday Masses 8:00 a.m. Monday, Tuesday and Thursday, 7:30 p.m. on Wednesday and Friday. Saturday Masses 8:30 a.m. and 7:30 p.m., Holy Days of Obligation 8:00 a.m. and 7:30 p.m. Confessions After Wednesday and Friday evening Mass, and Saturday from 4:00 to 5:00 p.m.

FIRST CHURCH OF CHRIST, SCIENTIST
Located at 428 South Michigan Street, Plymouth.
Worship Service 10:30 a.m., Wednesday Evening Service 7:45 p.m.

ST. THOMAS EPISCOPAL CHURCH
Located at the corner of Center and Adams Streets, Plymouth. Rev. James G. Greer, Pastor.
Sunday Services, Holy Communion 7:30 a.m., Family Eucharist 9:30 a.m., Parish Nursery 9:30 a.m.

PRETTY LAKE TRINITY UNITED METHODIST
Rev. J. C. White, Pastor.
Morning Worship 9:30 a.m., Sunday School 10:20 a.m.

RICHLAND CENTER UNITED METHODIST CHURCH
Rev. Curtis R. Sylvester, Pastor, Robert J. Nellans, Lay Leaders, Howard Conrad, Superintendent, Telephone Rochester 223-3751.
Worship Service 9:30 a.m. on Second and Fourth Sundays, 10:30 a.m. on First and Third Sundays, Church School at Alternating Times.

BURTON UNITED METHODIST CHURCH
Rev. Curtis R. Sylvester, Pastor, John Cessna, Lay Leader, Margaret Belcher, Superintendent, Telephone Rochester 223-3751.
Worship Service 9:30 a.m. on First and Third Sundays, 10:30 a.m. on Second and Fourth Sundays, Church School at Alternating Times. Methodist Youth Fellowship 5:30 p.m. Sunday.

For corrections or additions,
please contact:

The Culver CITIZEN
Post Office Box 90
Culver, Indiana 46511

Been Waiting Long To Get That
Electrical Work Done?



**KUPKE
ELECTRIC CO.**

Rural Route 1,
KEWANNA, INDIANA
46939

PHONE:
653-2012

ART
KUPKE

- Dependable
- Courteous
- Service



Let us help you get to know your new community as quickly as possible. Our hostess will call on you and present you with gifts, greetings and useful information.

Welcome Wagon
INTERNATIONAL, INC.

Call Charlene Strang
Telephone 842-2986

Service News

PROMOTION AT NOTC

Lieutenant Commander Elaine F. Londak was promoted to her present grade in a ceremony at the Naval Officer Training Center in Newport, Rhode Island.

LCDR Londak was commissioned in 1965 and reported to NOTC in March, 1972. Her previous duty stations have included the Office of the Chief of Naval Operations, Naval Activities United Kingdom, and Attack Squadron One Twenty Five.

LCDR Londak, a graduate of Texas Women's University in Denton, Texas, is presently assigned as the Director of the Initial Assignment Counseling Division of Officer Candidate School. She is the daughter of Mrs. Bernadette Londak of Culver.

SURBER COMPLETES BASIC

Marine Pvt. William H. Surber, son of Mr. and Mrs. Roger B. Wise of Culver, graduated from basic training at the Marine Corps Recruit Depot at San Diego, California this month.

He was a 1973 graduate of Culver Community High School.

JEFFRIES REPORTS

Marine Pvt. Eugene L. Jefferies, son of Mr. and Mrs. Ova Mollohan of Culver, reported for duty at the Marine Corps Base at Camp LeJeune, North Carolina this month.

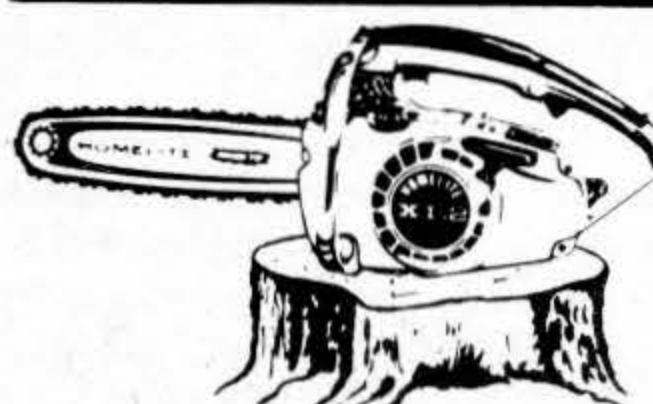
He attended Culver Community High School, and joined the Marine Corps in August of 1973.

We specialize in the replacement of zippers in all types of garments. **Albert the Clothes Doctor, Main Street near Washington. Phone 842-3513.**



PVT. WILLIAM H. SURBER

**FIREWOOD !!
SAVE FUEL
SAVE MONEY
CUT YOUR OWN.**



**HOMELITE®
XL-2 CHAIN SAW
TWO TRIGGERS**

ONE for big cutting jobs

ONE for little pruning jobs

LIGHTWEIGHT • POWERFUL •

RUGGED

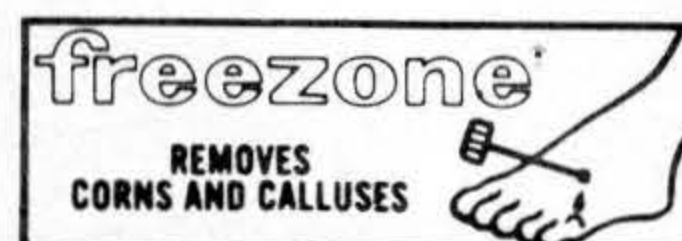
Only \$119.95

MANUFACTURER'S SUGGESTED PRICE

Look for your local Homelite dealer in the **YELLOW PAGES.**

FREEZONE IS FOR CORNS THAT HURT.

Why fool around with painful corns, when Freezone can help you remove them. Try it. You'll see. In just days, the corn will be gone... the hurt will be gone. Painlessly. No dangerous cutting. No ugly pads or plasters. Drop on Freezone—take off corns.



LONG DISTANCE
PHONE CALLS
REDUCE
YOUR PROFITS—
CALL US INSTEAD!

Overnight delivery available from five area warehouses gives you ready access to nearly every automobile need...

CULVER AUTO SUPPLY

Call Us First — 842-3658

2-Way Radio — Scanners — Sales & Service

L D N Electronics

Larry Norman, Owner
Route 4, Plymouth, Indiana
Licensed

Three Miles East of State Road 17 on West 14B Road

Open Tuesday & Thursday 6 To 9 p.m.
Saturday 10 a.m. To 6 p.m.

The Three Sisters Building NOW FOR RENT

Banquets — Parties — Weddings — Meetings
ALL FACILITIES AVAILABLE
SMALL OR LARGE GROUPS
Capable Of Serving Up To 250

For More Information Call 842-2793
CATERING UPON REQUEST



PROMOTED—Commander Julia J. Di Lorenzo, Assistant Director of OCS, helps recently promoted

Lieutenant Commander Elaine F. Londak with her newly striped officer's coat.

Boyne Country MICHIGAN

GAS ECONOMY SKI PACKAGES
Beat the Gas Rap & Enjoy
the Most Skiing Ever!!



TWO - DAY STANDARD SKI WEEKEND
(Begins each Friday evening with lodging, ends after skiing Sunday). Starts at \$70.

THREE - DAY SKI WEEKEND
(Begins Friday after dinner and continues after skiing following Monday). Starts at \$102.

FOUR - DAY SKI WEEK
(Begins each Monday with lunch, continues to after skiing following Friday). Starts at \$142.

FIVE - DAY STANDARD SKI WEEK
(Begins Sunday with dinner and continues after skiing following Friday). Starts at \$160.

SEVEN - DAY SKI WEEK
(Begins after dinner each Friday and continues after skiing following Friday). Starts at \$230.

NOTE: All packages include lodging, meals, unlimited use of lifts, ski instruction, evening entertainment. Saturday and Sunday lunches are not included in any package. Prices are based on per person double occupancy.

For Information and Reservations Write or Call:
Reservations | Reservations
BOYNE MOUNTAIN | BOYNE HIGHLANDS
Boyne Falls, MI. 49713 | Harbor Sprgs, MI. 49740
(616) 549 - 2441 | (616) 526 - 2171



A Book and/or a Certificate You Will Read With "Interest"

BEST reading for those who save are the figures written in their own savings pass book or Savings Certificate. If figures could talk they would relate an interesting story of hopes and efforts. They would also tell a story of growing savings—a story that never grows old or tiresome.

WEKKLY or monthly deposits plus interest add up to a continuing tale of savings success. Authors of these "best sellers" wear a self satisfied air as they study their efforts.

WHY not join the ranks of those who have this economic peace of mind? There is pure enjoyment and assurance that comes with having money in a Savings Account, either Passbook or Savings Certificate at The State Exchange Bank, Culver, Plymouth, Argos, and the Farmers State Bank, LaPaz.

THE STATE EXCHANGE BANK

UNDER ONE MANAGEMENT

CULVER

PLYMOUTH

ARGOS

"The Bank That GOOD WILL Built"

FDIC

FARMERS STATE BANK

LAPAZ

Our Library

News About Books

NEW BOOKS AT THE LIBRARY

"A Window on Williamsburg," by John J. Walklet and Thomas K. Ford. Here in full color and at all seasons of the year is the restored 18th century capital city of Virginia. Its fine public buildings, homes, gardens and spacious greens, outbuildings and operating craft shops, and its people.

Edited by A.F.L. Deeson is "The Collectors' Encyclopedia of Rocks and Minerals," an invaluable reference for buyers of mineral specimens and for those in the field who collect them. Profusely illustrated in color, the book is fully cross-referenced to cover alternative means.

"The All Breed Dog Grooming Guide," by Sam Kohl and Catherine Goldstein. Step-by-step illustrated instruction for bathing, trimming, scissoring, and grooming the 128 breeds recognized by the American Kennel Club.

Two needlework books: "Creative Stiches," by Dona Z. Meilach and Lee Erlin Snow, contains material ideas and techniques. This is a comprehensive handbook for artists, teachers, students, and hobbyists. Sylvia Sidney's "Needlepoint Book" will be welcomed by library patrons, a book that has been requested several times.

A novel, "Blue Invektive," by James C. Manning, is written by a police officer about other police officers and the ghetto.

Zipper replaced with best quality. **Albert the Clothes Doctor, Main Street near Washington. Phone 842-3513.**

Helps Shrink Swelling Of Hemorrhoidal Tissues

caused by inflammation

Doctors have found a medication that in many cases gives prompt, temporary relief from pain and burning itch in hemorrhoidal tissues. Then it actually helps shrink swelling of these tissues caused by inflammation.

The answer is **Preparation H®**. No prescription is needed for Preparation H. Ointment or suppositories.

In a moving and romantic novel, "Tart Is The Apple," Joyce Varney has told the story of a young war bride's painful adjustment to a foreign land.

"Vermont," in all weathers, by Noel Perrin with beautiful photographs, some in color, by Sonja Bullaty and Angelo Lomeo.

CULVER CITY CLUB TO MEET

The Culver City Club will hold its monthly general meeting at 8:00 p.m. Thursday, February 7th, at the Grace United Church of Christ. Mrs. Ruth Shanks will be in charge of the program.

Community Calendar

Thursday, January 31st

CCHS Freshman Basketball at Rochester
4:15 p.m. CMA Swimming at Goshen
6:30 p.m. Wesley Adult Fellowship Carry In Supper
6:30 p.m. CAG-Rochester Basketball
8:00 p.m. Maxinkuckee I.O.O.F. #373

Friday, February 1st

2:00 p.m. Culver Extension Homemakers Club in members homes
4:00 p.m. CMA-Lafayette Jefferson Wrestling
5:30 p.m. CAG Swimming at Valparaiso
6:30 p.m. CCHS-CMA Varsity Basketball at CCHS

Saturday, February 2nd

Northern Indiana School Band and Orchestra Association Instrumental Contest At CCHS
CCHS TRC Wrestling Tourney
1:00 p.m. CMA-Danville Swimming
6:45 p.m. CMA Basketball at Argos
7:00 p.m. Special Film "My Son, My Son" at Culver Bible Church

Sunday, February 3rd

1:10 p.m. "CCHS Is On The Air" Radio Show - WTCA Radio

Monday, February 4th

CCHS Freshman Basketball at Oregon-Davis
6:30 p.m. CCHS-Caston Girls Basketball
7:00 p.m. Scout Troop 290 meeting at Wesley Church
7:00 p.m. Rainbow Girls meeting at Masonic Hall
7:30 p.m. Town Board meeting at Town Hall
7:30 p.m. Maxinkuckee Rebekah Lodge #844
8:00 p.m. VFW Ladies Auxiliary

Tuesday, February 5th

CCHS Wrestling at Caston
1:00 p.m. Senior Citizens meeting at Zion Hall
6:30 p.m. CAG Basketball at Triton
6:30 p.m. Greater Marshall County Crusade Banquet
7:30 p.m. School Board meeting at Superintendent's Office
7:30 p.m. Order of Eastern Star
8:00 p.m. VFW Fathers Auxiliary

Wednesday, February 6th

7:30 p.m. American Legion Auxiliary
8:00 p.m. Eagles Lodge

Storm Damage

RIGHT: Four children of Richard O'Connor stand beside a fallen limb on the property of Reed Keller, West Shore Drive. Saturday's windstorm caused damage in many areas of town. CITIZEN photo

RAINBOW INSTALLATION SCHEDULED

Rainbow installation will be held February 2nd at 7:30 p.m. in the Masonic Temple.

Officers to be installed will be Worthy Advisor Twyla Shaffer, Worthy Associate Advisor Judy Kemple, Charity Susan Middleton, Hope Martha Davis, Faith Kelly Middleton, Recorder Debbie Bernhardt, Treasurer Karen Kowatch, Chaplain Tammy Overly, Drill Leader Gwen Burns, Love Debbie Shock, Religion Debbie Grover, Nature Cathy Brown, Immortality Brenda Shaffer, Fidelity Michelle Jaquish, Service Kathy Grover, Confidential Observer Julie Osborn, Mother Advisor Mary Allen, and Rainbow Dad Kemp Moore.

The installation will be open to the public.



Greater Marshall County Crusade Banquet

When: Tuesday, February 5th at 6:30 p.m.
Where: National Guard Armory in Plymouth on West Madison Street
Who: For all Marshall County residents who want to see a resurgence of spiritual faith among our people.
Why: To introduce the Crusade team:

Dr. Ford Philpot Evangelist
The Fishermen Musical Trio
Sam Davis Youth Evangelist
Bobby McFalls Crusade Director

Tickets available from your local pastor, or in the Culver area see Rev. John Krueger, Grace United Church of Christ.

KITCHEN CLOSED

Beginning February 11th
SO WE CAN REMODEL OUR
FOOD PREPARATION AREA
SPECIAL HOURS FEBRUARY 11 THRU 21:
3:30 To 10:30
Serving Drinks Only
THE CORNER TAVERN
Our Great Food Will Be Even Better
In A Couple Of Weeks!

LAMPS

New Lamps From
Latest Lamp Show—

Some Tray Lamps

Early American
Table Lamps

Many Desk
And Wall Lamps

"Let Us Light Up Your Home"

Boetsma
HOME FURNISHINGS, INC.
Culver, Indiana

The Sale Is Still On!

Shoes
Coats
Suits
Sport Coats
Slacks
Jeans
Shirts

Save
20%
To
50%

Andy's CULVER CLOTHIERS

Weekend Traveler

HOW TO BEAT THE GAS RAP AND ENJOY THE MOST SKIING EVER

No gas for skiers?
Maybe.

But it is premature to panic. No snow is far more serious - but it's already here.

Recently, a test run was made from Boyne to Lansing to determine the gas saving expected by traveling the recommended and soon-allowable speed limit of about 55 miles per hour on the expressways.

The gas consumption test was made using the biggest, heavy four-door, gas-eating monster available short of a heavy tank. The test car cruised down the expressway from Boyne Country to Lansing to a Michigan Tourist Council meeting on the gas crisis and energy conservation. It was loaded with four persons and luggage for weight and kept at a speedometer reading of about 58 miles per hour for the 197-mile trip. Result? Total consumption 11.4 gallons, less than half a tank, or about 17 miles per gallon.

On the return trip, the test car drove pre-gas-shortage legal limits (never over 70 on the expressway) Lansing to Petoskey, 207 miles, and burned 19.2 gallons, over 3/4 of a tank, or averaging about 10.7 miles per gallon.

So it took 45 minutes longer, so what?

What it means is that it is possible to drive from any city in Michigan to northern ski areas on a tank of gas, if good driving practices are observed and speeds are kept at the allowable 50 or 55 mile-per-hour range. Further, it is possible to reach northern ski areas from any out-Michigan metropolitan area (such as Chicago, South Bend, Fort Wayne, Cincinnati, Louisville, Indianapolis, Cleveland, etc.) if an automobile gas tank is filled at or near the Michigan border.

Downhill may no longer be lonely. Take a buddy or three



along.

Still got the gas jitters? Take a bus.

Indications are that the bus companies are seeing a skier boom and are rallying their equipment, personnel and fuel to the cause. Looks as if there'll be more busses than ever heading to Michigan's ski country from major metropolitan areas on both a regular scheduled and charter basis.

Negotiations are already under way with several major bus companies, the Michigan Tourist Council and resorts in conjunction with the Department of State Highways, to provide sufficient busses on a regular, scheduled 7-day week basis (with greater implementation during the weekends) departing from lower Michigan metropolitan areas such as Detroit, Lansing, Grand Rapids, Benton Harbor, etc., directly to eight northern terminal points. Further, investigations are under way to determine the feasibility of providing a ski train from Detroit and Chicago areas to Grand Rapids

and thence northward to the ski areas, at least on a weekend basis. Outstate skiers will be able to take immediate advantage of the bus program by driving to the staging areas in the lower part of the State and bussing northward.

Ski clubs and associations have long been prepared with their charters which will be unaffected by the additional requirement for busses. Shortly, skiers wishing bus transportation will be able to call resorts, ski shops, Chambers of Commerce, travel agents and the like to make bus reservations directly to their favorite ski areas.

And, to sweeten the joys of bussing, the Boyne Country ski resorts at least allow a 50-cent discount on lift tickets to all passengers in a busload.

Still jittery?

Stay longer!

Historically, such major resorts as Boyne Country have been wedded to two standard ski-package plans - the two-day weekend which ends on the proposed gas-stationless Sunday, and the five-day week which begins on the gas-stationless Sunday. Now, three-day ski weekend plans are offered beginning on Friday and ending after skiing on Monday (that's a jump on the four-day work week); the four-day "gas-beater" mid-week plan which begins with

skiing on Monday and ends after skiing Friday; as well as the seven-day "ski totaller" plan which begins on Friday and ends after skiing the following Friday.

Skiers should remember that: 1. Northern Michigan ski areas in the Lower Peninsula are definitely in the one-gastankful range from any city in Michigan and such out-State communities as Toledo and South Bend.

Gas and heartburn?

Di-Gel® contains a unique anti-gas ingredient, Simethicone.

This unique discovery breaks up and dissolves trapped gas bubbles. Your relief is more complete because Di-Gel takes the acid and the gas out of acid indigestion. Get Di-Gel tablets or liquid today. Product of Plough, Inc.

SHY® FEMININE SYRINGE

THE MODERN,
CONVENIENT APPROACH
TO FEMININE HYGIENE

Shy® is the unique feminine syringe. It expands to hold two quarts of your favorite solution. Convenient to use—no hoses, no hang-ups... easy to store... tucks away discreetly. Shy® feminine syringe is available at leading drug, discount and department stores.

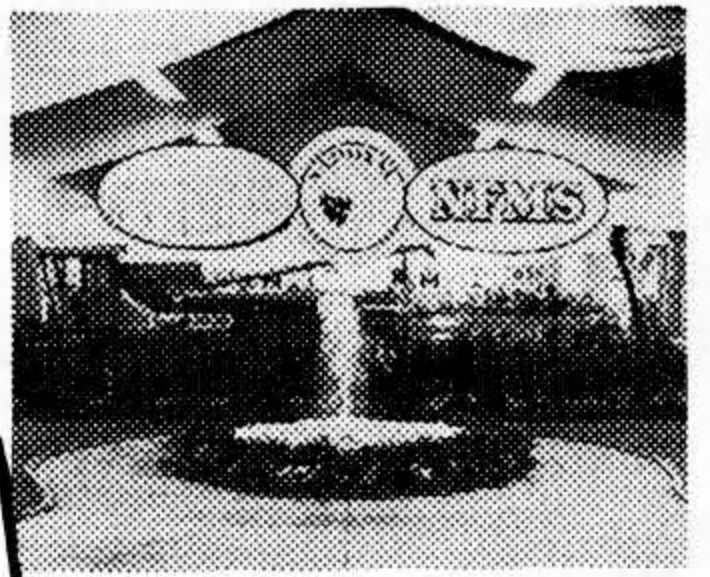


NINTH ANNUAL NATIONAL FARM MACHINERY SHOW

Another grand farm machinery exposition... one of the nation's finest... is in the making. Visit the booths of our 350 exhibitors, get the latest data on farming techniques and methods... see today's innovations in farm equipment. 68% of the Nation's population lives within a day's drive from the Kentucky Fair & Exposition Center in Louisville. Make plans now. Remember, too, your free ticket stubs are good for a prize-a-day drawing, plus a color-TV grand prize.

SPONSORED BY KENTUCKY
FAIR & EXPOSITION CENTER

NATIONAL FARM MACHINERY SHOW TICKETS
P. O. Box 21179, Louisville, Kentucky 40221
(502) 366-9592



LOUISVILLE, KY.
FEBRUARY

13-16

9:00 am - 5:30 pm

Order Your Free Tickets
Now from Your Farm Im-
plement Dealer or from
NFMS.



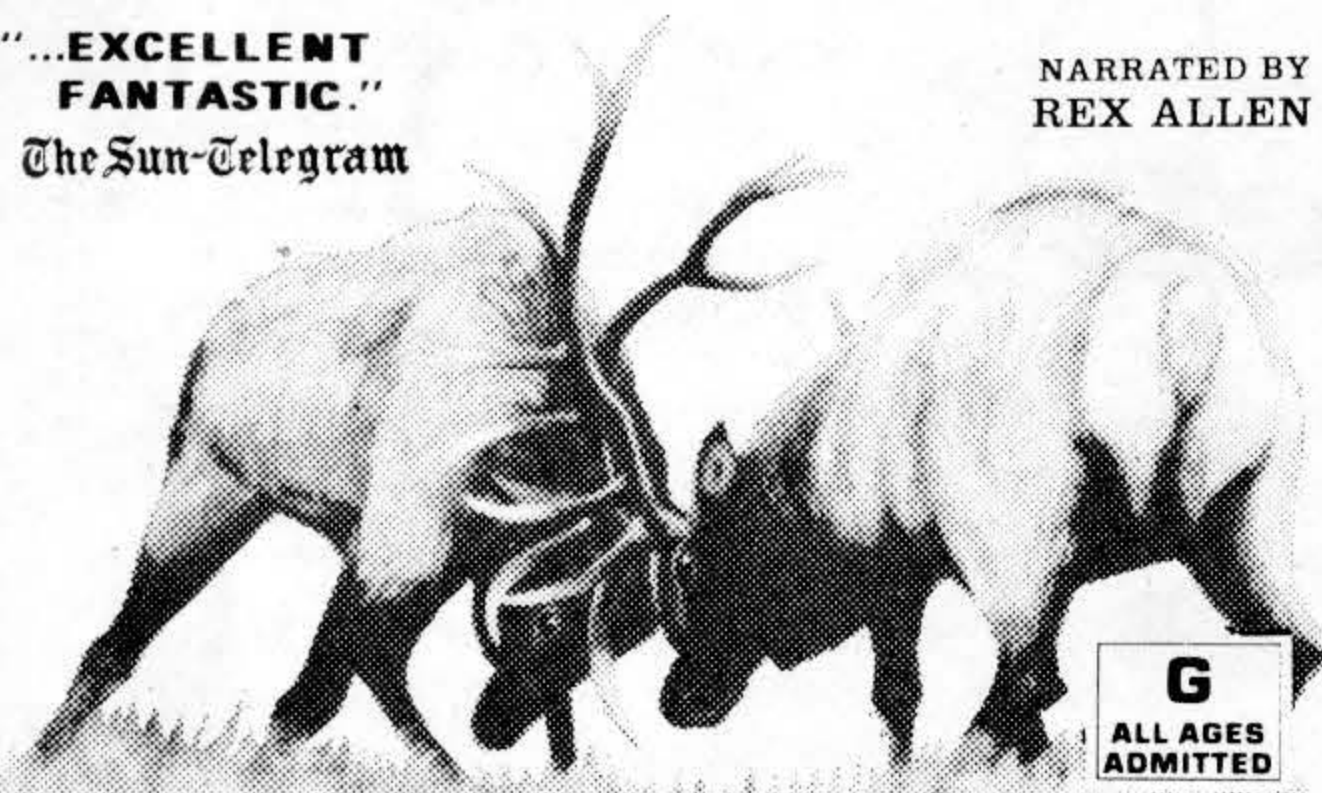
Don't miss the tractor pulling championships in World Famous Freedom Hall. Eleven Contest Classes (Three Hot Rod Classes) (Three Garden Classes).
FEBRUARY 13, 14, 15—6:30 P.M. EST
FEBRUARY 16—7:00 P.M. EST
Admission will be charged for Tractor Pull only.

Vanishing Wilderness

"...SEE IT BEFORE CIVILIZATION SWEEPS IT AWAY..."

"...EXCELLENT
FANTASTIC..."
The Sun-Telegram

NARRATED BY
REX ALLEN



MAN CAN LIVE IN HARMONY WITH NATURE

A COLOR FILM BY A. R. DUBS & HEINZ SEILMANN
RELEASED BY PACIFIC INTERNATIONAL ENTERPRISES INC.

Showing Monday
Feb. 4 One Day Only
El Rancho

ADULTS
\$1.75

WEEKDAYS - 5:00 - 7:00 - 9:00
SORRY NO PASSES

UNDER 12
.75

January Sale

FINAL WEEK

FINAL WEEK

CHILDREN'S BOOTS
1/2 PRICE
SIZES 8-4

TWO TABLES OF WARM SLEEPWEAR
STILL LEFT

A FEW LONG ROBES LEFT

TAKE ADVANTAGE OF THIS SALE...
AND GET A COAT FOR NEXT WINTER!

SOME VERY BEAUTIFUL
FABRIC STILL WAITING
FOR YOU. PERK UP YOUR
WINTER WARDROBE NOW!

THE STORE IS STILL FULL
OF LOTS OF BARGAINS
IN ALMOST EVERY DEPARTMENT.

Lots Of Bargains Left!

THE **Kelly** SHOP

Culver, Indiana

THE CITIZEN BILLBOARD

Advertising By Classification

Classified Advertising Rates

Up to 25 words, \$1.00 — 2 Weeks \$1.80 — 3 Weeks \$2.40 — 4 Weeks \$2.80
Up to 50 words, \$2.00 — 2 Weeks \$3.60 — 3 Weeks \$4.80 — 4 Weeks \$5.60

Cash In Advance For Classifieds, Please.

Phone 842-2297

PERSONALS

LOST: BLACK & WHITE SPRINGER SPANIEL, small female, missing from her home on SR 10 just east of Queen Road near Culver since December 27th. A \$50 reward for information leading to her recovery. Phone 842-2905. TFN

CARD OF THANKS

We wish to sincerely thank all of our friends and neighbors for their help during and after the fire that destroyed our home. We also would like to thank the Culver Fire Department who worked so hard and long to save the house and belongings. All the donations that have been offered and received are appreciated very much. Thank you.
David Osborn and Family

CARD OF THANKS

We would like to take this opportunity to express our heartfelt thanks for those who extended to us their kind wishes and help during our recent loss.
Carl Stubbs and Family

CARD OF THANKS

We wish to thank the friends who were so helpful in taking us to and from the hospital during Roy's illness and operation. Also for cards, food and for which we are so grateful. Special thanks to Rev. Krueger for guidance and prayer. May God bless each and every one.

Roy and Florance Watts

SALE

SPINET-CONSOLE PIANO. Wanted: Responsible party to purchase spinet piano on low monthly payments. Can be seen locally. Write Manager, P.O. Box 276, Shelbyville, Indiana 46176. 8006p

FELKE FLORIST

Plymouth

Call Us Collect For

Flowers For Any

Occasion

We are as close as your phone

936-3165 COLLECT

TFN

SCANNERS—CB Radios. See our ad this issue. LDN Electronics. 8005

COMPLETE SERVICE—Rug cleaning any size, bulk cleaning professionally spotted, garments repaired-altered-restyled. Suits individually tailored. **CULVER CLEANERS.** Charles and Mary Werner Ricciardi. 842-2685

8012

Powers Realty



Follow The Key!

Lake Sales and Rentals
Town, Farm, Commercial

Phones:
Culver - 842-2710
Plymouth - 936-3897



IF YOU HAVE any old fountain pens, (the ones that use liquid ink), we need them for our collection! If you have something that you think might be interesting, please call us, even if the pens are broken or parts are missing. The Culver Citizen, Tom and Bernadette Zoss, 842-2297. Thank you!

FOR SALE 1968 Chevy Caprice 4 door, air conditioned, power steering, power brakes, best offer. Phone 842-3614 before 1 p.m. or after 6 p.m. TFN

CAR FOR SALE—'67 Ford Galaxy convertible, 289, automatic, runs good, \$350. Phone 842-2503. 8007P

Thomas Real Estate

Gerald Thomas
Broker

Virginia Thomas
Salesman

Before Deciding, talk with us.

321 West Terrace Parkway
Culver 842-2311

PICKUP BED COVERS \$149 UP All Aluminum - slant side installed free 1 year warranty. **ALROVE MFG.** 1126 E. Jefferson, Mishawaka, Ind. 219-255-9385 Open Thurs., Fri., Sat., Sun., Mon. 9-6. TFN

Real Estate See C.W. Epley REALTOR

450 Forest Place, Culver
Phone 842-2061

Sales

Appraisals
TFN

USE
HOST

**Dry Clean Carpet
and use instantly**

Please
phone for information

**Boetsma Home
Furnishings, Inc.**
Culver 842-2626

Hudon Typewriter Service
103 West LaPorte Street, Plymouth.
Sales - Service - Rentals, Typewriters
and Adding Machines. Repairs on all
makes. Royal Portable dealer.
Phone 936-2728. TFN

MATURE TIMBER - we buy logs and
standing timber for top prices within 50
miles. Precision Pallets and Skids Inc.,
Walkerton, Indiana 46574. Phone
586-3068 Days, 586-3052 or 586-2688
Nights. My31

MUSICAL INSTRUMENTS Clearance
sale before March 1st—Over 100 New
and Used organs and pianos on display.
Thompson Music House, 500-506 North
Street, Logansport. 5x8009

FOR SALE—fireplace wood. Manor
Market, East Shore Drive. 842-3004.
8004

RENT

FOR RENT Clean, nicely furnished
three room apartments. Also sleeping
rooms. Phone 842-3442. TFN

SIX ROOM APARTMENT for rent,
central gas heat and air conditioning.
842-2027. TFFNB

FOR RENT - Unfurnished three-
bedroom country home on East Shore
Drive with large kitchen, living and
dining rooms, basement and two
porches. References and deposit.
Available immediately for one-year
minimum lease at \$125 a month. Call
Dave Gaskill, 842-3311, extension 213.

ITCHING LIKE MAD?

Get this doctor's formula!

Zemo speedily stops torment of
externally caused itching... of
eczema, minor skin irritations, non-
poisonous insect bites. Desensitizes
nerve endings. Kills millions of sur-
face germs. "De-itch" skin with
Zemo—Liquid or Ointment.

LEGAL NOTICES

NOTICE TO BIDDERS

Notice is hereby given that the Board of Trustees of the Town of Culver, Marshall County, Indiana, will receive sealed bids for a fire truck and equipment. The bids are to be executed on State Board of Accounts Form #95 and will be accepted until 7:30 P.M. on the 18th day of February, 1974. Specifications are on file in the office of the Clerk-Treasurer.

The Board of Trustees reserves the right to accept or reject any and all bids.

BOARD OF TRUSTEES
Town of Culver
MARIZETTA KENNEY
Clerk-Treasurer

2x8005

NOTICE OF ADMINISTRATION

STATE OF INDIANA, MARSHALL COUNTY, SS: IN THE MARSHALL SUPERIOR COURT, ESTATE NO. SE-74-2, IN THE MATTER OF THE ESTATE OF JOSEPH BARRETT IRVINE, Deceased.

Notice is hereby given that C. Lucile Irvine was on the 28th day of January, 1974, appointed Executrix of the estate of Joseph Barrett Irvine, deceased.

All persons having claims against said estate, whether or not now due, must file the same in said Court within six months from the date of the first publication of this notice or said claim will be forever barred.

Dated at Plymouth, Indiana, this 28th day of January, 1974.

Joanne Price VanDer Weele
Clerk of the above captioned Court
Thomas Warner Zoss
Culver, Indiana
Attorney for Estate

3x8007

PROFESSIONAL DIRECTORY

PHYSICIAN

LAKE SHORE CLINIC
921 Lake Shore Drive
Phone 842-3327

Michael F. Deery, M.D.

PHYSICIAN

General Medicine and Obstetrics
Office Hours by Appointment
M. GEORGE ROSERO M.D.
17 East Main Street, Kewanna
Office Hours by Appointment
Phone: Office 653-2383
If no answer phone 653-2565

DENTIST

Thomas M. Pugh, R.P.H., D.D.S.
Office Hours by Appointment
1001 Lake Shore Drive
Phone 842-3465

OPTOMETRIST

Dr. F. L. Babcock

Office Hours by Appointment
Tuesday, Thursday, Friday, 9 to 5
Wednesday and Saturday 9 to 12
Closed Monday
Phone 842-3372

CLINICS

CULVER CLINIC
820 Academy Road
Phone 842-3351

G. W. Stevenson, D.O.
General Family Practice
Office Hours By Appointment
Phone 842-3351

Agonizing Pain From Ingrown Toenail? Get Outgro For Fast Relief

Outgro gives you fast temporary relief from ingrown toenail pain. Outgro toughens irritated skin, eases inflammation, reduces swelling without effecting the shape, growth, or position of the nail. Stop ingrown nail pain fast with Outgro.

For SINUS Discomfort TAKE sinarest®



**SPECIFICALLY
FORMULATED FOR
SINUS HEADACHE
AND CONGESTION**

PENWALT CORP.
PHARMACRAFT
CONSUMER PRODUCTS

Box 1212
Rochester, New York 14603

CULVER MUSIC DEPARTMENT TO HOST CONTEST SATURDAY

On Saturday, February 2nd, the Culver Community Schools Music Department will be host to 18 area schools for the annual Northern Indiana School Band and Orchestra Association Instrumental Contest. This event will be the third year in a row that Culver has been asked to play the host role. Mr. Charles F. Byfield, Director of Bands in the Culver Community Schools Corporation, will be the Host Chairman.

Approximately 1,100 students have entered the contest, with 110 Culver band students participating.

The Culver High School Band students will assist in running the contest along with many parents of the Music Booster Organization. The Booster Club will be serving food in the cafeteria all day.

All fund-raising activities of this organization now and in the near future will be directed toward the anticipated trips which are being

planned for this school year, next summer, and hopefully other school years.

Mr. Byfield and all of the Band students wish to express their appreciation to the Administration and the School Board for their efforts on behalf of the Band in undertaking and planning activities for the future.

Arthritis Sufferers:

WAKE UP WITHOUT ALL THAT STIFFNESS!

New formula for arthritis minor pain is so strong you can take it less often and still wake up in the morning without all the pain's stiffness. Yet so gentle you can take this tablet on an empty stomach. It's called *Arthritis Pain Formula*. Get hours of relief. Ask for *Arthritis Pain Formula*, by the makers of *Anacin* analgesic tablets.



VOCAL CONTEST WINNERS— Here are six of the winners of the district vocal contest held recently in the Northern District. Front row, left to right, Julie Pinder, Bob Craycraft, Tery Bigley. Back row,

Paula Thompson, Steve Smith, and Valerie Bauer, who also won a first place in piano. Award winners not shown included Regina Pratt, Lisa Kline, and Peggy Runkle.

CITIZEN photo

LIBRARY BOARD MEETS

The Culver Public Library Board met in regular session Monday evening, January 28th, at 8:00 p.m. in the Library. The secretary reported receipt of the Library's tax allotment. Regular claims were approved by the board.

Mr. and Mrs. Tom Zoss spoke to the board concerning the possibility of presenting a trial puppet show in the spring, with regularly scheduled puppet shows to follow if enough interest can be generated. The Board agreed to see to the clearing of the stage that is located in the basement of the library for use during the show.

The Board next discussed the need for janitorial help at the Library, and it was agreed to hire Don Kline to perform such services at a rate of \$100 per month.

Librarian Jane Scruggs was given a \$160 raise in salary for the coming year. After a report on the Tri-Kappa Blood Pressure Clinic held the first Thursday of every month at the Library, the meeting was adjourned.

EL DANCHE
Theatre
Culver

HELD OVER!

NOW THRU SUNDAY FEB. 3

"BILLY JACK"

Rated PG

7:15-9:15 p.m.

Elementary School Menu

Monday, February 4th—Hot Dog sandwich, catsup, mustard, relish, buttered corn, orange juice, cherry cake, milk.

Tuesday, February 5th—Chicken and noodles, stewed tomatoes, carrot sticks, bread, rolls, butter, pineapple, milk.

Wednesday, February 6th—Chop suey, rice and noodles, bread, rolls, butter, lettuce salad, peaches, milk.

Thursday, February 7th—Goulash, bread and butter, peanut butter sandwich, celery sticks, chocolate pudding, milk.

Friday, February 8th—Scalloped potatoes and ham, harvard beets, bread and butter, peanut butter sandwich, juice, peaches, milk.

High School Menu

Monday, February 4th—Pork and gravy on biscuit, mixed vegetables, cole slaw, apple sauce, bread, butter, milk.

Tuesday, February 5th—Spaghetti with meat sauce, wax beans, toss salad, peaches, peanut butter chew, bread, butter, milk.

Wednesday, February 6th—Beef vegetable soup, crackers, cheese slices, peanut butter sandwich, Boston cream cobbler, milk.

Thursday, February 7th—Chicken and noodles, mashed potatoes, buttered peas, cabbage salad, chocolate cake, bread, butter, milk.

Friday, February 8th—Tuna casserole, harvard beets, toss salad, fruit cup, bread, butter, milk.

SNOWED IN?

USE THESE "INSIDE DAYS" TO PUT YOUR HOUSE IN ORDER...

WE CAN HELP!

EXPERT CLEANING AND FINISHING FOR DRAPERIES, SLIPCOVERS, BLANKETS AND BEDSPREADS...

THE IDEAL CLEANERS

In Culver



GRETTER'S

We Proudly
Feature

ACROSS from THE BANK

PHONE
842-
2262

FOOD MART

Known For QUALITY MEATS
100 N MAIN ST CULVER



TOP MEAT BUYS

LEAN FRESH

GROUND BEEF LB.

\$1.09

MEATY BEEF

SHORT RIBS LB.

69c

COUNTRY STYLE

BACK RIBS LB.

95c

LEAN CENTER SLICES

SMOKED HAM LB.

\$1.49

FRESH BULK

PORK SAUSAGE LB.

89c

ECKRICH

SMOKY LINKS 10 OZ. PKG.

79c

SAVE ON NAME BRANDS

HI-C

ORANGE DRINK 3 46 OZ. CANS

\$1.00

HILLS BROTHERS

COFFEE 2 LB. CAN

\$1.89

NESTLE'S
SEMI-SWEET CHOCOLATE

CHOCOLATE MORSELS 12 OZ. PKG.

55c

BANQUET FROZEN

MEAT PIES 3 FOR

79c



MORE BIG BUYS

SOLID CRISP

HEAD

LETTUCE 29c



BORDEN'S

COTTAGE

CHEESE

59c

1 LB. CARTON

ROYAL SCOTT

OLEO LB.

39c

YELLOW

ONIONS

3 LB. BAG

49c



new 1974 **ZENITH**
ALLEGRO
SOUND SYSTEM



ONLY THE SOUND IS EXPENSIVE!

The NOVARA • Model E680W—Features Zenith's new Allegro 1000 speakers. Each speaker has a 6 1/2" woofer and a 3 1/2" horn plus a tuned port. Digilite, to put an end to AM/FM confusion. Plus an 8-track tape player.



the surprising sound of Zenith

Al's TV & Appliances

115 South Main Street, Culver
Phone 842-2982